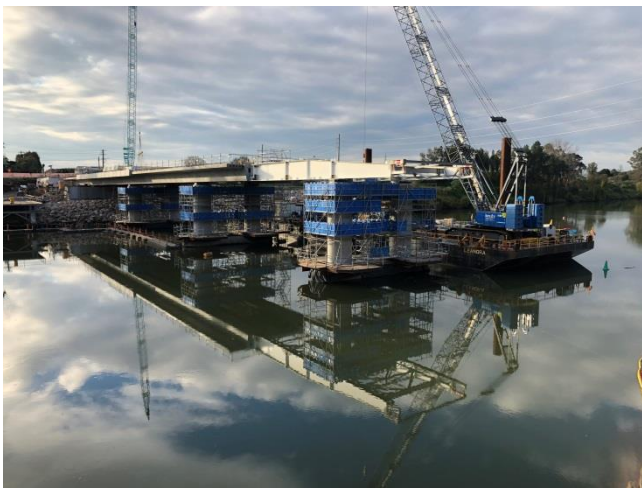


Windsor Bridge replacement project

Construction update – September 2019

Major work is continuing on the new Windsor Bridge to help improve traffic flow and provide a safe and reliable crossing over the Hawkesbury River at Windsor.



Bridge launching is almost complete

Work to be carried out in **September 2019** includes:

Bridge construction

We will launch the final segments and the bridge will reach the southern side in September.

When the bridge reaches the southern side, we will remove the launch nose. Concrete work will restart at each abutment to complete the approaches.

We will also remove the casting bed formwork and supporting structures.

The marine access platforms will remain in position after the bridge launching as we reconfigure the bridge bearings. Our floating pontoons will remain in place to provide access for this work.

Utility relocations

We are upgrading the electrical network between George Street and Macquarie Street. This includes decommissioning some of the old streetlights and installing new streetlights and poles.

To complete this we will install:

- new overhead wiring.
- a new electrical pole
- some new electrical lanterns

We will continue to notify affected residents separately before any proposed noisy or night work.

We will also remove an existing water main along the southern side of Wilberforce Road. Work will include some investigation and preparation work to connect existing customer services to the larger existing mains.

New utility services are being installed under each newly constructed segment of the bridge, and then launched out with each bridge segment.

Roadwork

Work is continuing near the intersection of Bridge and George Streets.

This work involves roadwork and landscaping and will continue east of the new bridge from the George and Bridge streets intersection, downhill to The Terrace.

The work behind the barriers continues and includes archaeology, building new road

surfaces, installing services and overhead electrical work.

We will continue to notify affected residents separately before any proposed noisy or night work.

Archaeology

Archaeologists will continue to work in the project area when required.

Marine

The barge will remain in place in the project area.

The floating pontoon will also remain to access the piers as they may be shifted depending on the barge location, to maintain a navigational channel through the work area.

Our work schedule

Work will generally be carried out during standard construction hours between **7am** and **6pm** on weekdays and from **8am** to **1pm** on **Saturday**.

There will be some out of hours work undertaken through September along Bridge and George Streets between **9pm** and **5am Monday to Friday**.

There will also be some extended hours on **Saturday** from **8am** to **4pm**.

How the work will affect you

There may be some noise and disruption associated with this work including vehicle movements. We are continuing to make every effort to minimise noise and disruption to the community during construction.

Temporary traffic changes (inclusive of lane closures, road closures and detours) will be in place to ensure the work zone is safe. Please follow the direction of traffic controllers and signs.

For the latest traffic updates, you can call 132 701, visit livetraffic.com or download the Live Traffic NSW App.

Contact

Please contact us on 1800 983 657, email windsorbridge@georgiou.com.au or visit rms.nsw.gov.au/windsorbridge.

Thank you for your patience during this important work.

Please note: The **Hawkesbury Paddle Wheeler** continues to operate and will be picking up and dropping off passengers from a temporary mooring at Governor Phillip Park boat ramp wharf.

For more information contact Ian: 0401 798 088



131 450

If you need help understanding this information, please contact the Translating and Interpreting Service on 131 450 and ask them to call us on 1800 983 657.