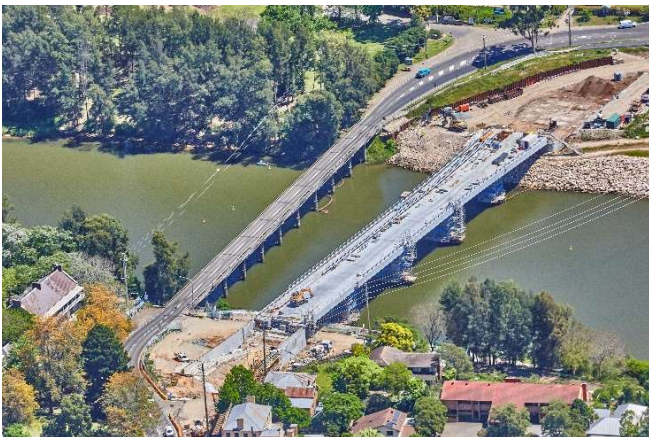


# Windsor Bridge replacement project

## Construction update – December 2019 and January 2020

Major work is continuing on the new Windsor Bridge to help improve traffic flow and provide a safe and reliable crossing over the Hawkesbury River at Windsor.



The Bridge is now fully launched across the river

Work to be carried out in **December 2019 and January 2020** includes:

### Bridge construction

Work is continuing at the northern and southern bridge abutments and the marine piers. We will also start to remove the temporary access systems on the piers.

We are working to finish the concrete barriers on the bridge which will involve both precast and cast-in-place concrete.

We are also continuing work to backfill the northern and southern bridge approaches.

### Utility relocations

Work will continue to upgrade the existing sewer infrastructure between the north and south areas of the river. To complete this work, we will install new sewer infrastructure and connect it with existing sewers.

Work will be ongoing on both the southern and northern approaches for the installation of newwater pipes. We will also continue removal of an existing water main along the southern side of Wilberforce Road.

Further upgrades continue to the electrical network on the northern bridge approach towards Wilberforce Road. We are installing new underground cables to extend the network from Bridge Street towards The Terrace.

Work will also continue installing underground cables for the traffic lights on the southern approach. There will be ongoing work with the new underground cable installation on Bridge Street between Macquarie Street and George Street and we will be mounting the signal boxes.

Telstra and NBN are also installing cables on the northern bridge approach.

### Roadwork

We will continue roadwork and footpath reinstatement along Bridge Street.

Stormwater drainage installation will take place at The Terrace and next to the abutment on the southern side.

Work will be ongoing along Wilberforce Road as part of the new road alignment on the northern side of the river leading to the bridge structure.

## Archaeology

Archaeologists will continue to work in the project area when required.

### Our work schedule

Work will generally be carried out during standard construction hours between **7am** and **6pm** on weekdays and from **8am** to **1pm** on **Saturday**.

Out of hours work will continue into December and January between **9pm** and **5am Monday to Friday**.

In addition, there may be some early morning work to pour concrete from **5:30am**. This schedule will be dependent on the weather forecast. Residents affected will be notified prior to this work commencing.

There will also be some extended hours on **Saturdays** from **8am** to **4pm**.

### How the work will affect you

There may be some noise and disruption associated with this work, including vehicle movements. We are making every effort to minimise noise and disruption to the community during construction.

We will continue to notify affected residents separately before any proposed noisy or night work.

## Traffic Changes

**Temporary traffic changes** (including lane closures, road closures and detours) will be in place to ensure the work zone is safe. Please follow the direction of traffic controllers and signs.

For the latest traffic updates, you can call 132 701, visit [livetraffic.com](http://livetraffic.com) or download the Live Traffic NSW App.

### Pedestrian access

Signs are in place directing pedestrians to cross Bridge Street at the pedestrian lights at the intersection of Bridge and Macquarie Streets. The new pram access ramps near George Street will not be open to pedestrians until the new intersection traffic lights are in use. We ask pedestrians to follow the directions on the signs to safely cross Bridge Street.

### Contact

Please contact us on 1800 983 657, email [windsorbridge@georgiou.com.au](mailto:windsorbridge@georgiou.com.au) or visit [rms.nsw.gov.au/windsorbridge](http://rms.nsw.gov.au/windsorbridge).

Thank you for your patience during this important work.

**Please note:** The **Hawkesbury Paddle Wheeler** continues to operate and is picking up and dropping off passengers from a temporary location at **Governor Phillip Park boat ramp wharf**.

For more information contact Ian on: **0401 798 088**



If you need help understanding this information, please contact the Translating and Interpreting Service on 131 450 and ask them to call us on 1800 983 657.