

Community Workshop Waterfall Way Upgrade – Workshop Notes Pacific Highway to Connells Creek

Meeting Agenda: -

- Introduction;
- GeoLINK Presentation;
- RTA Introduction;
- Groups activity / discussion;
- Groups Presentation; and
- Meeting close.

INTRODUCTION: by Sonia George – RTA Communications Manager

PRESENTATION: by Roy Marsh – RTA Project Manager and Simon Waterworth – GeoLINK

GROUP PRESENTATIONS ON ISSUES TO BE CONSIDERED BY RTA:

Group A

- Poor standard of Cameron's Corner.
- Very dangerous alignment and corners at Raleigh Dam.
- Can there be a raised section of road to cross wetland corner?
- Push road alignment north-east from Shortcut Road intersection to Cameron's Corner (1550 -1800m).
- Push road alignment north at Cameron's Corner (1800 – 2100m).
- Realign road over Raleigh Dam to improve alignment (1100 – 1500m).
- Upgrade road section 600m – 1100m.
- Reduce speed to 70km/h.



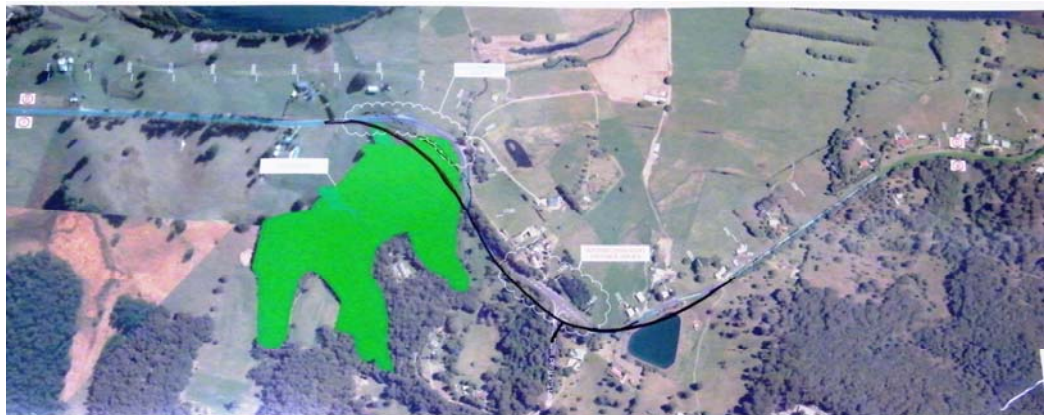
Group B

- Improve Drainage for Wetland.
- Improve road for emergency service vehicles.
- Improve road width and reduce speed.
- Reclaim part of Raleigh Dam and farmland to realign road.
- Would accept the previous road realignment design that the RTA prepared in which some of the wetland is shaved off/impacted upon.



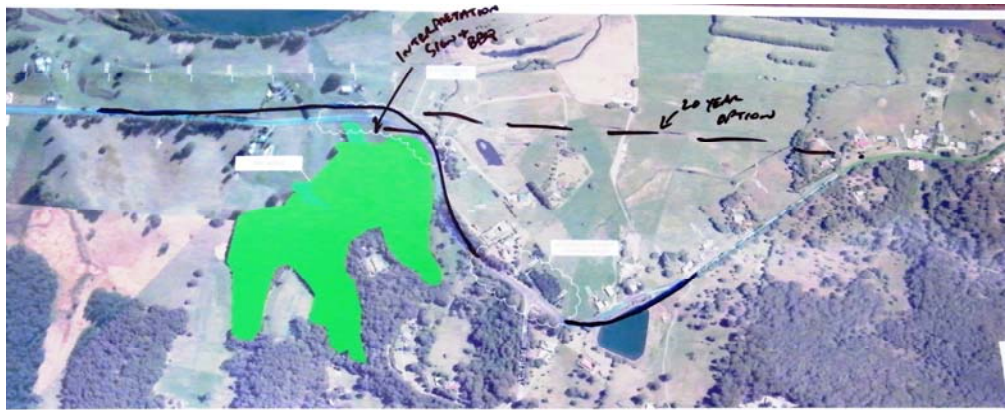
Group C

- Do not want a high speed road.
- Reclaim part or all of Raleigh Dam and farmland to realign road.
- Improve Shortcut Road intersection.
- Include passing lanes and protected turning lanes.
- Generally accept the loss of some of the wetland's outer edge.
- Need to improve safety for school bus stops.
- Enforce traffic and road rules.
- Improve the road's flood immunity, particularly at Cameron's corner/the wetland.



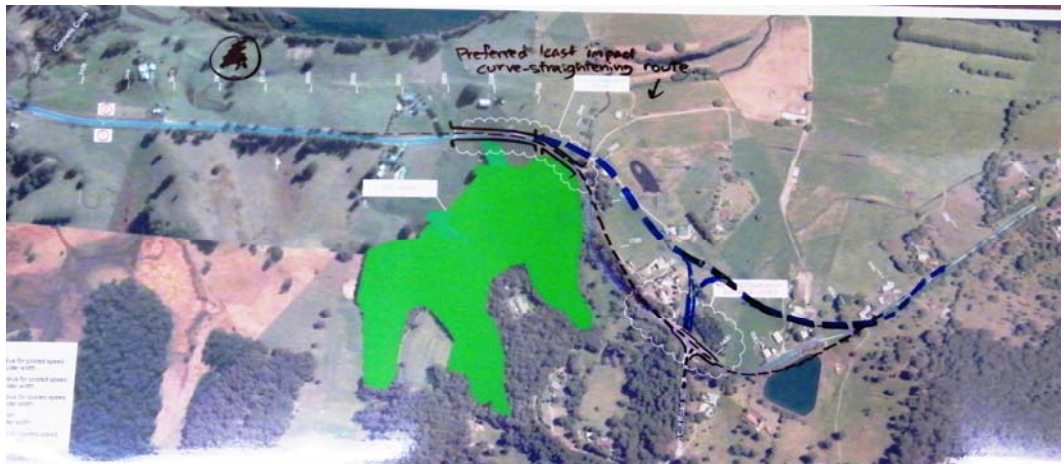
Group D

- Concerned about wetland damage; want to protect wetland in its entirety.
- Concerns about the road's general safety.
- Improve Shortcut Road intersection.
- Realign Cameron's Corner toward the north, avoiding the wetland.
- Reclaim part or all of Raleigh Dam and farmland to realign road.
- Reseal and improve the areas road pavement.
- If major funding was awarded, straighten out the whole subject section of Waterfall Way.
- Develop tourism opportunities around the wetland.
- Maintain the tourist route quality of Waterfall Way.



Group E

- Significantly improve flood immunity of the road.
- Protect the wetland and do not alter its natural drainage patterns and functions etc.
- Raise road near Cameron's Corner on pillars to allow for greater flood immunity and support the wetland's drainage, plus accommodate tidal surge periods of the river.
- Concerned about the road's general safety.
- Want a maximum speed of 80km/h.
- Improve Shortcut Road intersection and provide passing lanes.
- Realign and widen road and provide adequate shoulders for safe cycling – separate cycle way and road with guardrail to improve safety.
- Possibly shift alignment near Shortcut Road to the north.
- Maintain the tourist route quality of Waterfall Way and provide for rest stops and viewing areas.
- Fauna crossing issues.



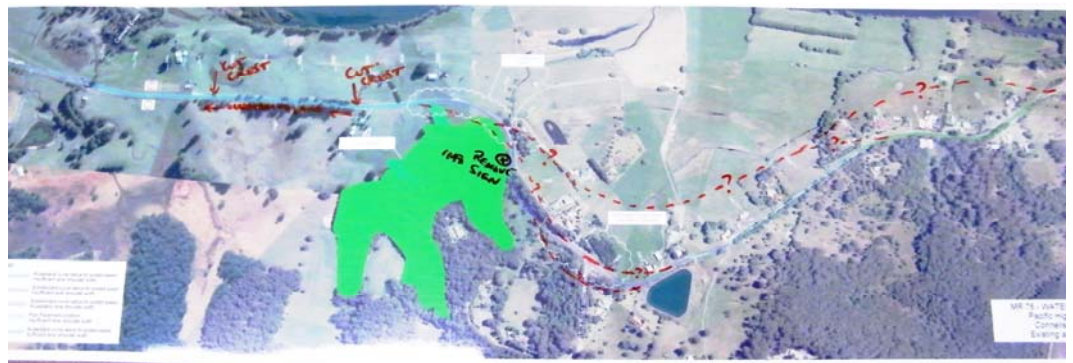
Group F

- Realign subject road section.
- Reclaim part or all of Raleigh Dam to realign road.
- Widen pavement and shoulders over whole project.
- Avoid the wetland at Cameron's Corner.
- Rehabilitate degrade wetland.
- Improve signage locations with regard to safety issues.



Group G

- Concerns about the road's general safety.
- Remove crests west of Cameron's Corner.
- Reposition signage that hinders visibility.
- Improve road alignment/poor corners, width and pavement quality.
- Improve Shortcut Road intersection with protected turning lanes.
- Would accept a road alignment that shaves off some of the ECC wetland.
- Improve flood immunity.
- Maintain the tourist route quality of Waterfall Way.
- Believe the upgrade will support economic growth.



Group H

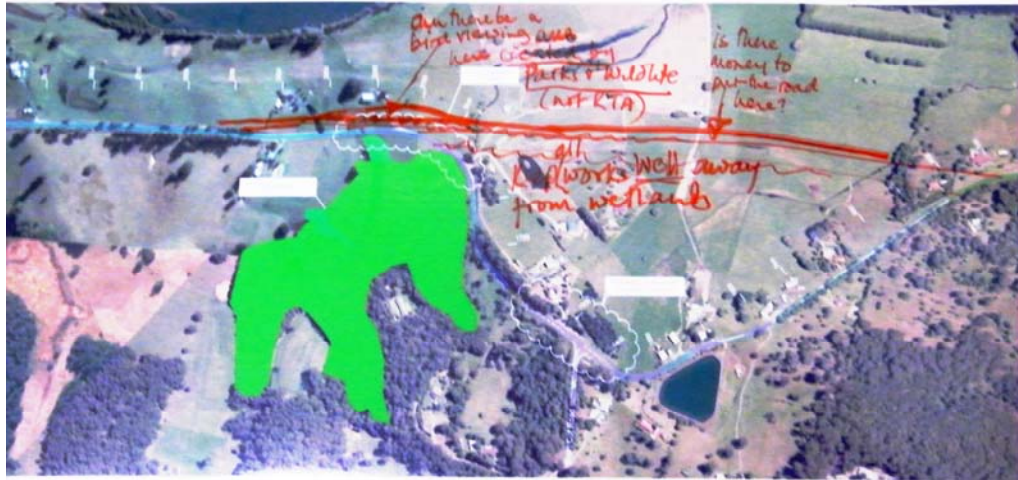
Members of this group posed some questions in their overall comments regarding the plan to realign this section of Waterfall Way.

- What evidence and safety requirements demand this upgrade compared to other areas of Waterfall Way that are substandard?
- What is the rationale behind realigning Cameron's Corner?
- Has a plan/design already been discussed with council?
- Is there funding to completely straighten out this section of road?

The Group's concerns/opinions were:

- Protect the wetland in its entirety and preserve its natural functions.
- Concerned about the damage road works near the wetland could inflict.
- Improve road width to incorporate suitable shoulders and subsequently support safer bicycle usage.
- Concerned about value for money and the quality of the finished product, e.g. road pavement.
- Concerned about the notion of bigger/wider roads encouraging higher speeds and increased heavy vehicle usage.

- Would rather see the subject section of road widened and resurfaced rather than realigned.
- Would like money invested into public transport and the promotion of alternative transport methods (e.g. car pooling and cycling) for the local area.
- Want the potential impacts of increased through traffic on Bellinghen to be considered.



Group I

This group was concerned about the big picture plan for Waterfall Way considering the amount of money being spent on it.

The group's concerns/opinions were:

- Protect the wetland in its entirety.
- Concerned about the damage road works near the wetland could inflict. Do not want wetland's hydrology or natural functions altered.
- General safety concerns.
- Concerned about more vehicles (including heavy vehicles) using Waterfall as a result of the upgrade and the risk of more through traffic in the townships of Bellinghen and Dorrigo.
- Opportunity for positive social, economic and environmental outcomes, e.g. public wetland viewing area.
- Concerned about the potential introduction of more weeds due to road works.
- Believe there is a need for fauna crossings along Waterfall Way.
- Want improved flood immunity and emergency services access.
- Concerned about the potential for increased speeds within the study area and across Waterfall Way as a whole, subsequently leading to more accidents.
- Want the scope of works to extent 1km west of Fernmount.
- Maintain the tourist route quality of Waterfall Way and preserve scenic values.
- Believe the works are required to maintain access and prevent road closures.
- Why spend so much money if there will be oil shortages in the future?