

Waterfall Way Upgrade – Pacific Highway to Connell's Creek

Community Workshop 4 August 2010



Workshop Agenda

- Introduction - project overview
 - Project objectives and process
 - Constraints
 - Workshop objectives
 - Group discussions to identify key issues
 - Presentation of group discussions
 - Weighting/ranking the constraints
 - Conclusion and wrap up
-

Pacific Highway to Connells Creek Project Area



To
Coffs Harbour

BELLINGER RIVER

Project Start Point:
Western Roundabout

Waterfall Way

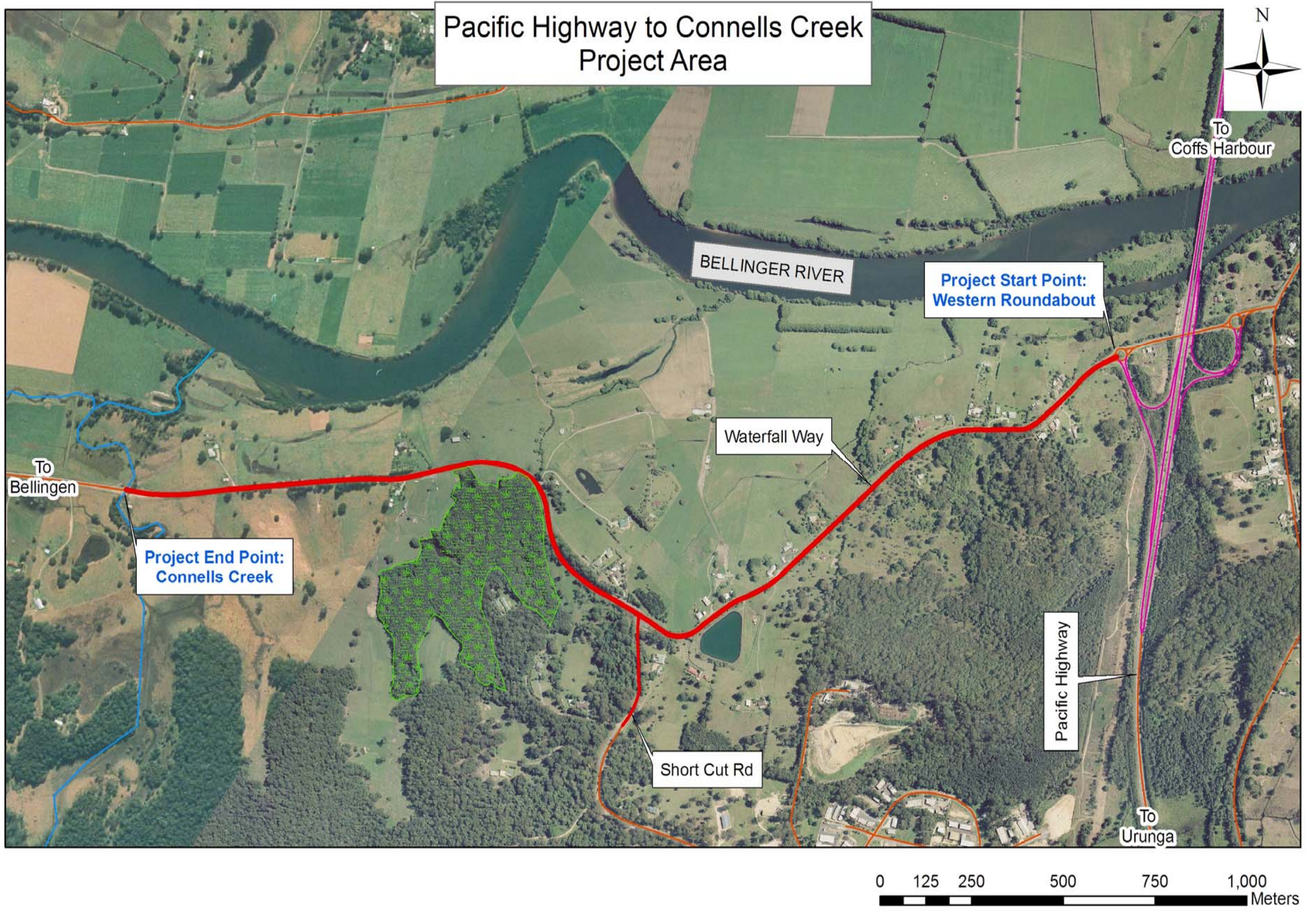
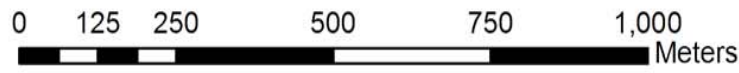
To
Bellingen

Project End Point:
Connells Creek

Short Cut Rd

Pacific Highway

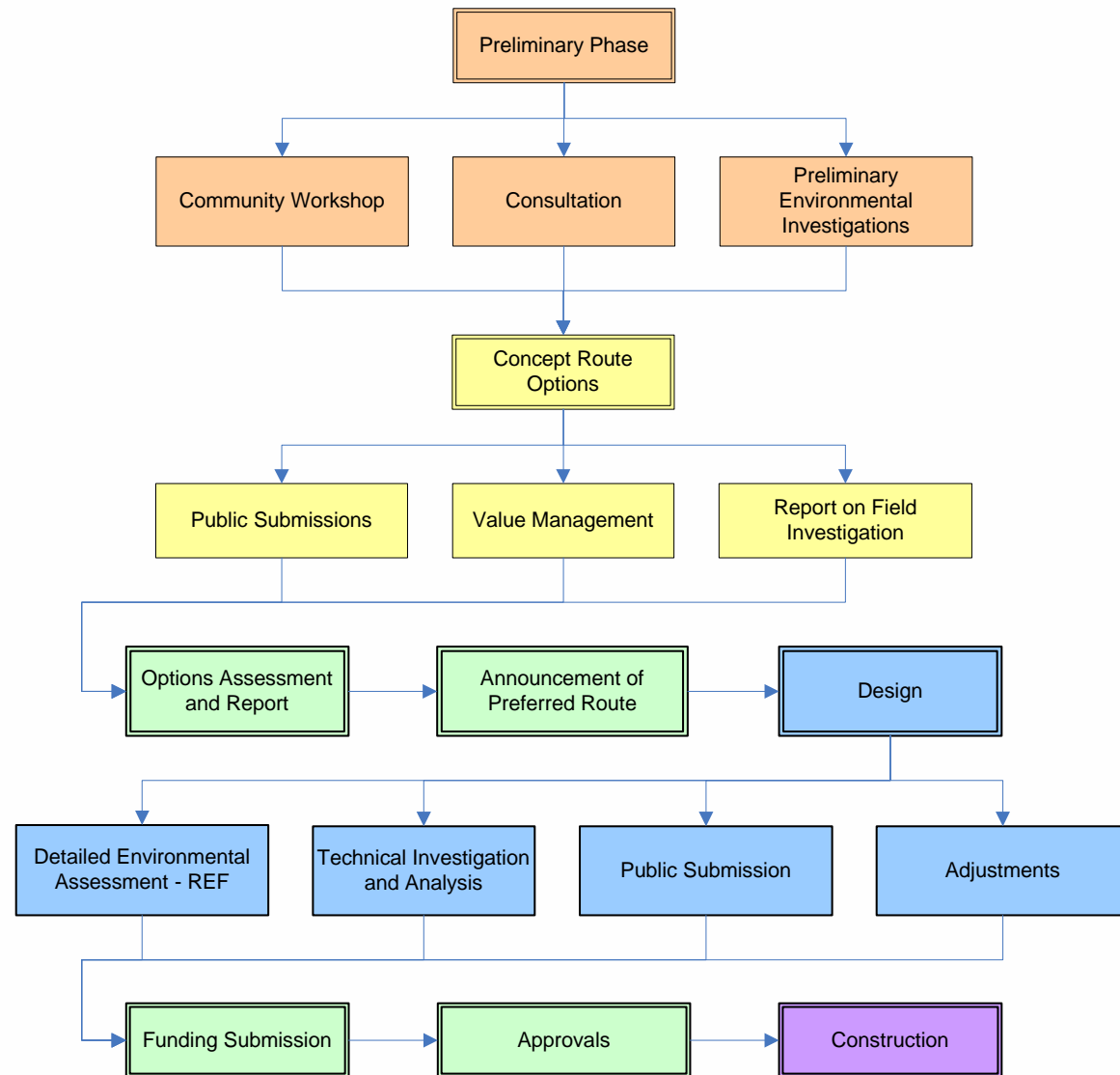
To
Urunga



Project Objectives

- Enhance safety for all road users over the length of the project
- Improve traffic efficiency between Bellingden and the Pacific Highway
- Increase flood immunity
- Improve pavement conditions
- Minimise impacts on the environment and specifically avoid building through the wetland at Cameron's Corner
- Involve all stakeholders and consider their interests
- Support regional and local economic development
- Provide value for money

Project Process



Constraints

- **Budgetary** – limiting funding pool
- **Scope** – limited to minor realignment only
 - single lane in each direction (not dual carriageway)
- **Technical and Administrative**
 - RTA policy and standards
 - Topography and ground conditions
- **Social and Environmental**
 - Dwellings and structures
 - Cameron's Corner wetland

Workshop Objectives

- Commencing an ongoing community consultation process for the project
- Obtaining feedback from the community on the potential social, environmental, technical and economic issues with the project
- Ranking the importance of each identified issue

Group Discussions

Each group to list all of the potential impacts/implications of the project under the headings:

- Social
- Environmental
- Technical
- Economic

Each group to list desired outcomes of the project



Group Presentations

Each group to provide a summary of issues raised to the rest of the workshop

Ranking/Weighting Constraints

All participants to weight/rank the constraints and desired outcomes.

This will allow the RTA to develop a matrix where concept options can be assessed according to these issues along with technical and policy requirements.

Conclusion

- Wrap up
 - Any further questions
 - Contacts for further information
-