

**Legend**  
Threatened fauna species

- Australasian Bittern
- Barking Owl
- Black Bittern
- ★ Black-breasted Buzzard
- ▲ Black-chinned Honeyeater (eastern subsp.)
- ▼ Black-necked Stork
- ◆ Blue-billed Duck
- Brown Treecreeper
- Comb-crested Jacana
- Eastern Bent-wing Bat
- ★ Eastern False Pipistrelle
- ▲ Eastern Freetail-bat
- ▼ Freckled Duck
- ◆ Glossy Black-Cockatoo
- Greater Broad-nosed Bat
- Green and Golden Bell Frog
- Green Turtle
- ★ Green-thighed Frog
- ▲ Grey-crowned Babbler (eastern subsp.)
- ▼ Grey-headed Flying-fox
- ◆ Hooded Robin
- Koala
- ◆ Large-eared Pied Bat
- Large-footed Myotis
- ★ Little Bentwing-bat
- ▲ Little Tern
- ▼ Littlejohn's Tree Frog
- ◆ Magpie Goose
- Masked Owl
- Osprey
- Painted Honeyeater
- ★ Painted Snipe (Australian subspecies)
- ▲ Pied Oystercatcher
- ▼ Powerful Owl
- ◆ Regent Honeyeater
- Rose-crowned Fruit-Dove
- Sooty Owl
- Speckled Warbler
- ★ Squirrel Glider
- ▲ Superb Fruit-Dove
- ▼ Swift Parrot
- ◆ Turquoise Parrot
- Wompoo Fruit-Dove
- Yellow-bellied Glider
- Yellow-bellied Sheath-tail-bat

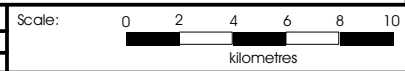
Additional layers

- National Highway Link F3 to Branxton
- 10km search area
- Candidate areas

Acknowledgements: NPWS and Geoscience Australia

Figure 6: Threatened fauna species within the vicinity of the National Highway Link F3 to Branxton, as derived from NPWS Atlas of NSW Wildlife

DATE: 21 April 2005  
 Checked by: RH  
 File number: S3715  
 Location: ...projects\3000\3700s\3715\mapping\UFA\3715 Fig 6 UFA.wor



BIOSIS RESEARCH Pty Ltd  
 15 - 17 Henrietta Street  
 Chippendale  
 NEW SOUTH WALES 2008

Figure 6: Threatened fauna species within vicinity of F3 to Branxton

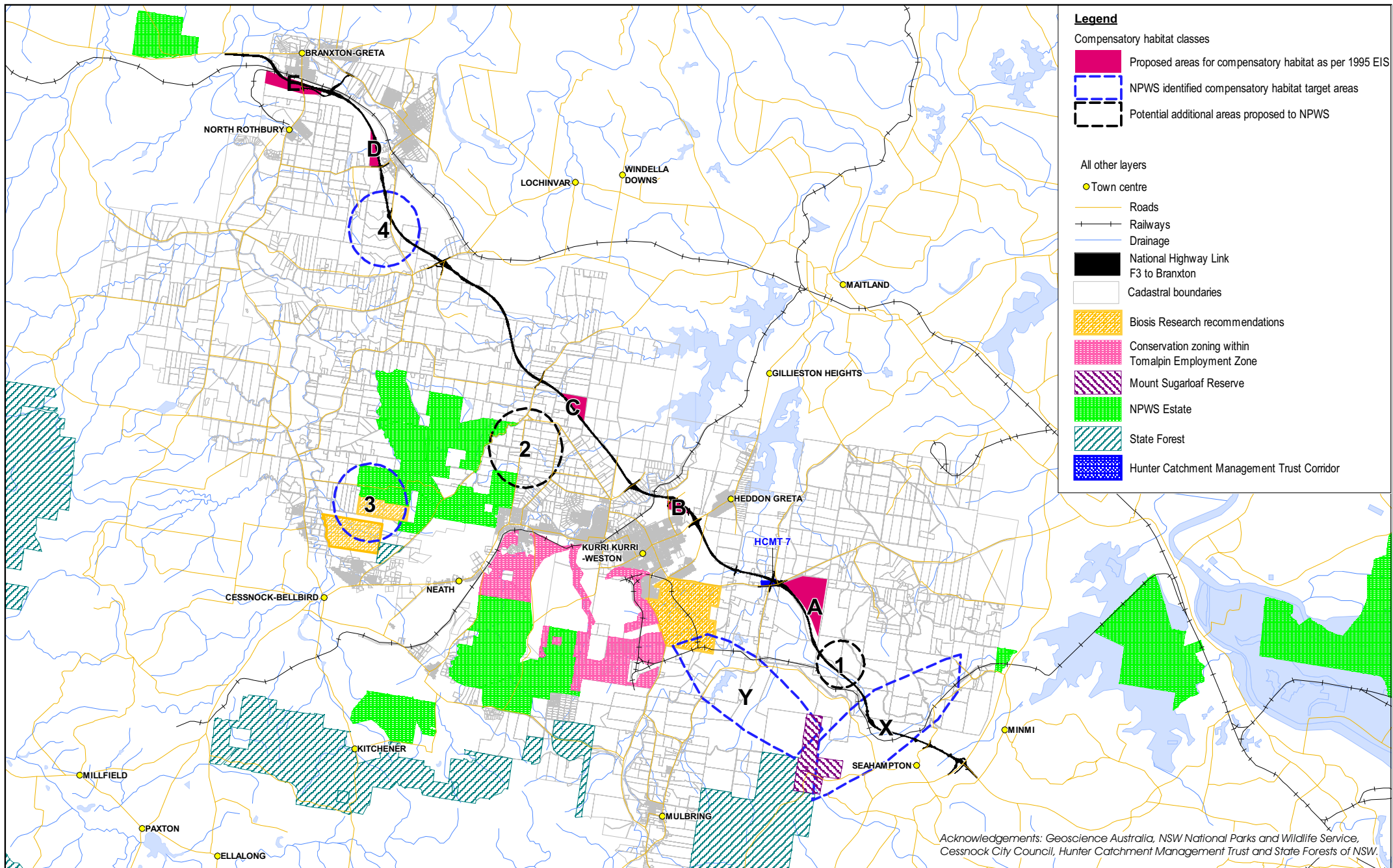


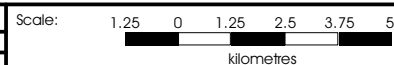
Figure 7: Wildlife corridors and compensatory habitat related to the F3 to Braxton National Highway Link.

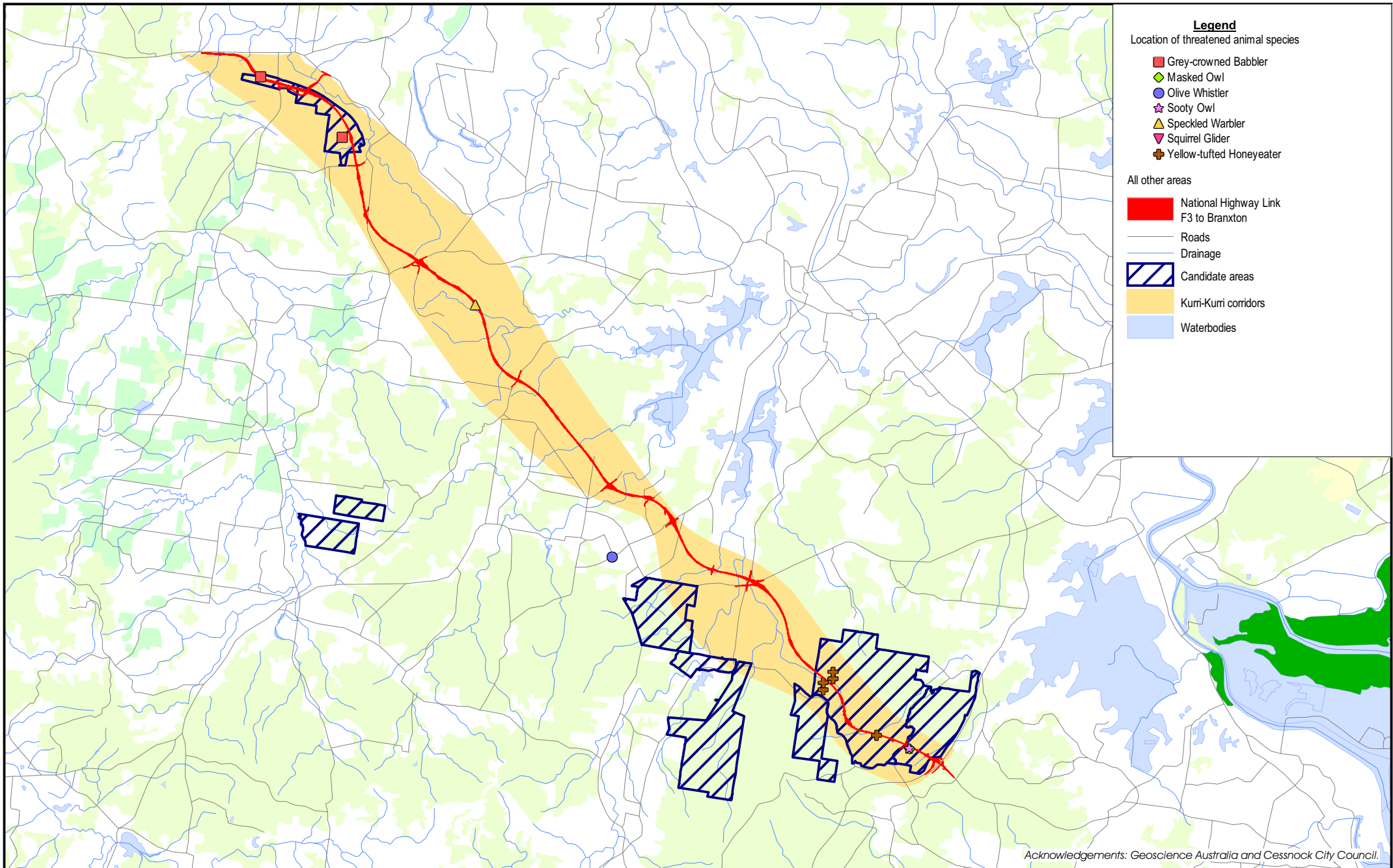
Figure 7: Wildlife corridors and compensatory habitat related to the highway link.



BIOSIS RESEARCH Pty Ltd  
 15 - 17 Henrietta Street  
 Chippendale  
 NEW SOUTH WALES 2008

DATE: 12 April 2005  
 Checked by: RH  
 File number: S3715  
 Location: ...projects\3000s\3700s\3715\mapping\UFAA\S3715 Fig7.wor





Acknowledgements: Geoscience Australia and Cessnock City Council.

Figure 8: Locations of targeted animal species and other threatened animal species recorded during the targeted surveys.

Figure 8: Locations of targeted animal & other threatened animal species recorded.



BIOSIS RESEARCH Pty Ltd  
15 - 17 Henrietta Street  
Chippendale  
NEW SOUTH WALES 2008

DATE: 12 April 2005

Checked by: RH

File number: S3715

Location: ...projects\3000s\3700s\3715\mapping\UFA\S3715 Fig8.wor

