

FIGURES

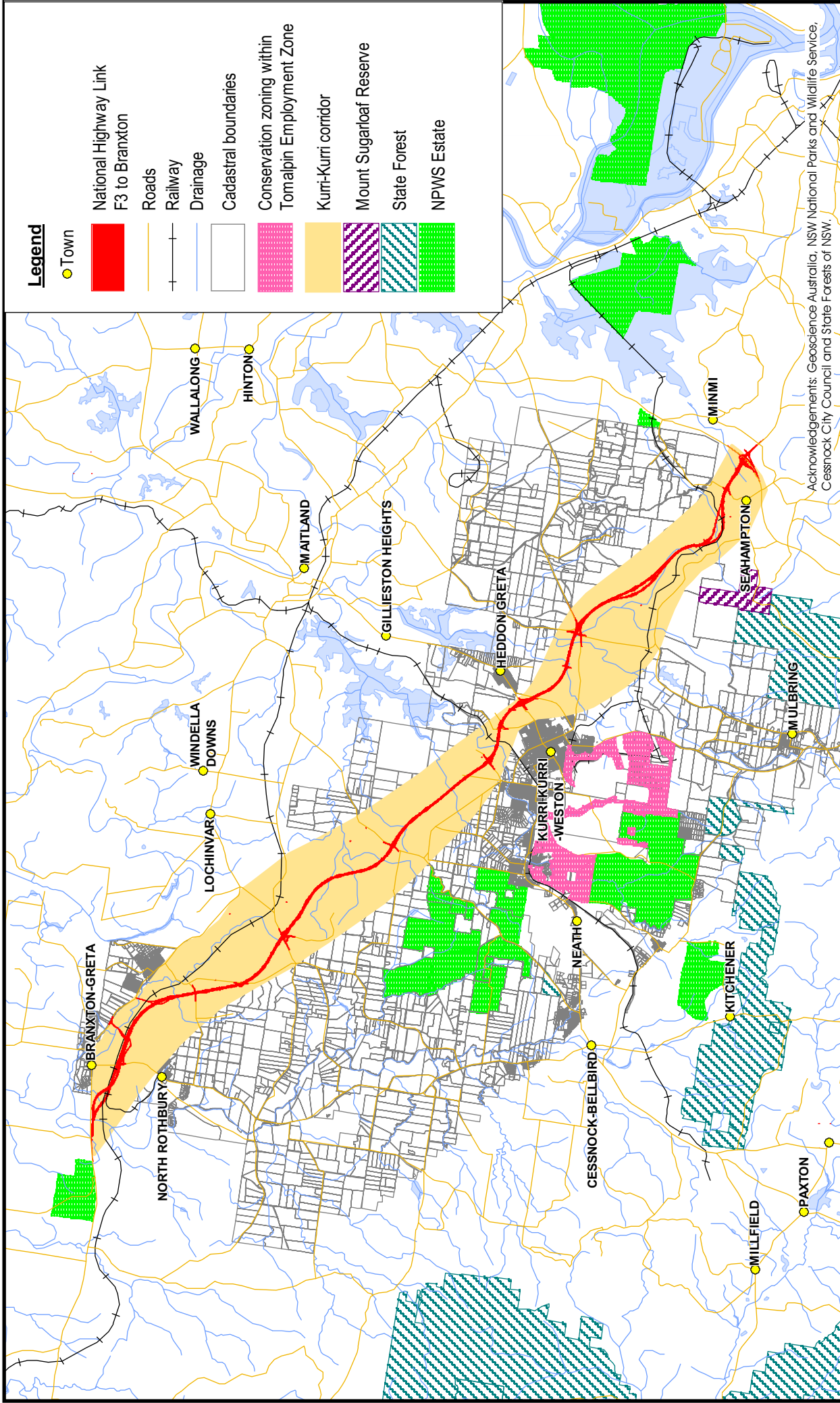



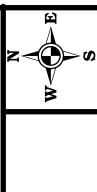
Figure 1: Location of the study site, the proposed F3 to Branxton Highway Link and the Kurri Corridor.

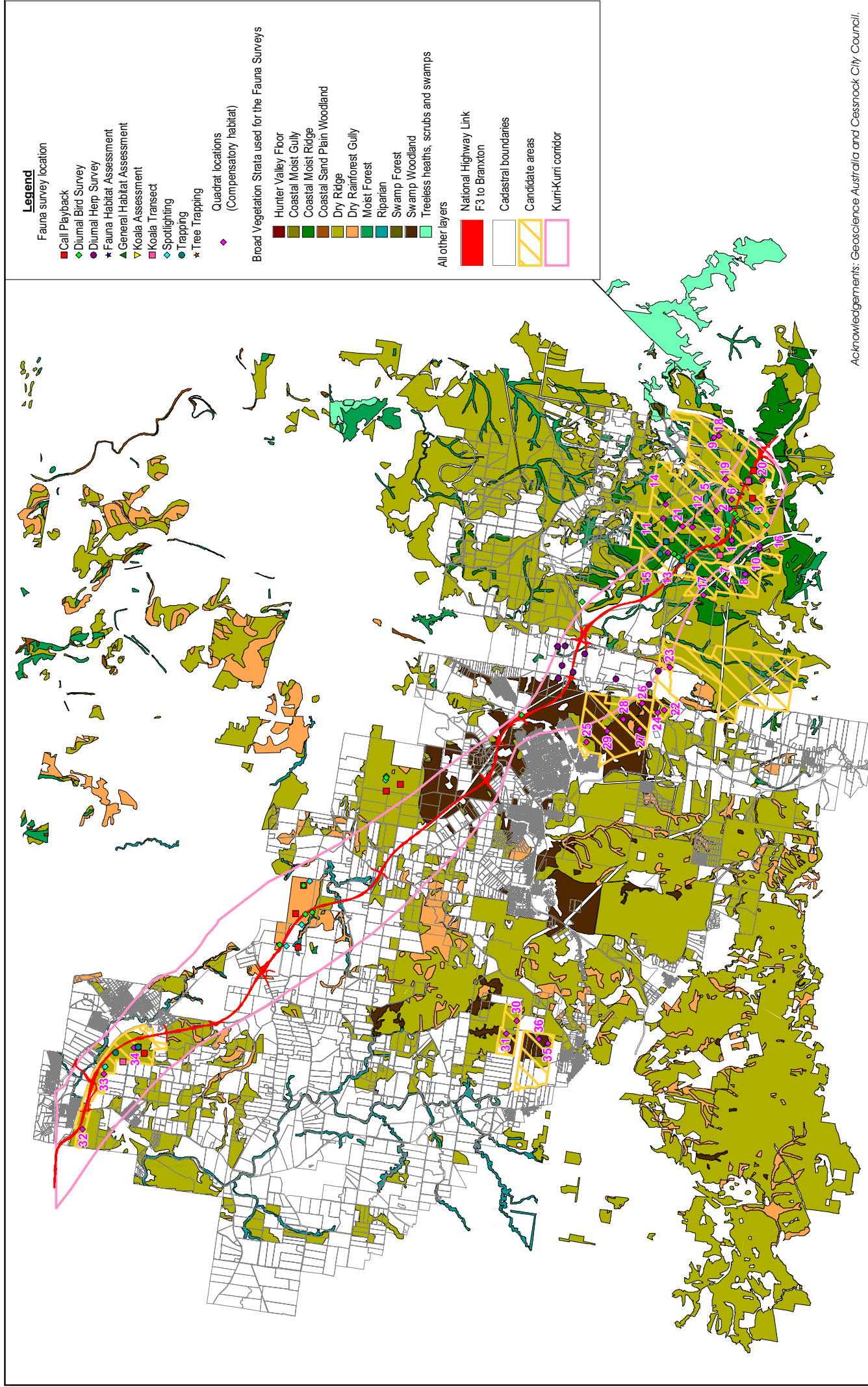


BIOSIS RESEARCH Pty Ltd
 15 - 17 Henrietta Street
 Chippendale
 NEW SOUTH WALES 2008

DATE: 7 April 2005
 Checked by: RH
 File number: S3715
 Location: ...:\projects\curdoc\37008\3715\mapping\UIFFAS3715_Fig1.wor

Scale: 2 0 2 4 6 8
 kilometres





Legend

Fauna survey location

- Call Playback
- ◆ Diurnal Bird Survey
- ◆ Diurnal Herp Survey
- ★ Fauna Habitat Assessment
- ▲ General Habitat Assessment
- ▼ Koala Assessment
- ◆ Koala Transect
- ◆ Spotlighting
- Trapping
- ★ Tree Trapping

- ◆ Quadrat locations (Compensatory habitat)

Broad Vegetation Strata used for the Fauna Surveys

- Hunter Valley Floor
- Coastal Moist Gully
- Coastal Moist Ridge
- Coastal Sand Plain Woodland
- Dry Ridge
- Dry Rainforest Gully
- Moist Forest
- Riparian
- Swamp Forest
- Swamp Woodland
- Treeless heaths, scrubs and swamps

All other layers

- National Highway Link F3 to Branxton
- Cadastral boundaries
- Candidate areas
- Kurri-Kurri corridor

Acknowledgements: Geoscience Australia and Cessnock City Council.

Figure 2: Location of survey points along the National Highway Link F3 to Branxton.

