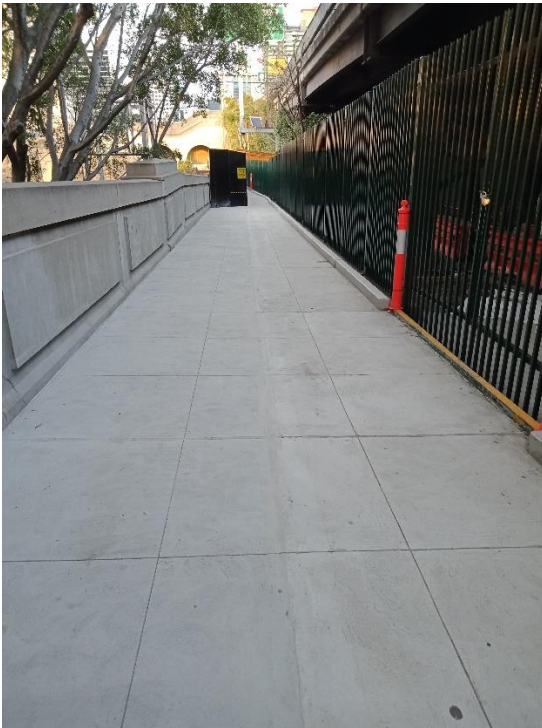


# Sydney Harbour Bridge Access Lifts

Fortnightly update from Sunday 12 August 2018

Sydney Harbour Bridge southern lift work includes:

- installing glass onto the steel lift structure
- removing and resurfacing 200m of the pedestrian walkway on the bridge
- heritage wall protection
- service identification and relocation, including trenching and the installation of new cables, drainage and utility pits on Cumberland Street
- installing environmental controls
- delivering construction vehicles and equipment to site
- traffic management to allow for roadwork, including temporary traffic changes in Cumberland Street between Gloucester and Lower Fort Streets.



*Completed resurfacing of a section of the pedestrian walkway in the south*



*Steel lift structure in place in Cumberland Street*

Sydney Harbour Bridge northern lift work includes:

- removing a small section of the wall of the bridge to enable the lift to be installed
- craning the steel structure of the lift into place
- installing glass on the steel lift structure
- removing and resurfacing 100m of the pedestrian walkway on the bridge
- construction of a pit for the new lift
- heritage wall protection
- service identification and relocation, including trenching and the installation of new cables along the eastern side of Broughton Street between Burton and Fitzroy streets
- installing environmental controls
- delivering construction vehicles and equipment to site
- traffic management to allow for roadwork, including temporary traffic changes along Broughton Street between Burton and Fitzroy streets.



*The northern lift construction site on Broughton Street*

Our standard construction hours are from **7am to 6pm, Monday to Friday and 8am to 1pm on Saturdays**, excluding public holidays.

There may be some noise and disruption associated with this work. Machinery and equipment used may include trucks, excavators, paving machines, rollers, lighting towers, road saws, plate compactors, vacuum trucks, grinders, cranes, elevated work platforms, chainsaws, light vehicles, hand tools, concrete trucks and equipment.

We will continue to make every effort to minimise the impacts to the local community.

**If you have any questions about the project**, please contact our delivery partner, John Holland Group on **1800 581 595** or [gina.kelly@jhg.com.au](mailto:gina.kelly@jhg.com.au).

For more information on our projects, visit [rms.nsw.gov.au/sydneyharbourbridge](https://rms.nsw.gov.au/sydneyharbourbridge)

Thank you for your patience during this important work.