



Night work on Boundary Street, Roseville

Community Consultation Report

April 2016



THIS PAGE LEFT INTENTIONALLY BLANK

Executive summary

This report provides a summary of Roads and Maritime Services' community and stakeholder consultation carried out in January and February 2016, on the proposed night work construction schedule to complete improvement work on Boundary Road, Roseville.

Roads and Maritime distributed more than 2000 letters to the community and stakeholders in Roseville seeking feedback on a proposal to work up to five nights a week in intervals during an 18 month period, carrying out the noisier work before midnight.

We received feedback from 14 people raising 23 matters. Key matters included the project, consultation, construction carried out to date and the night work schedule.

We will provide responses to all feedback through this report and directly to the people that made comments. We thank everyone who provided comments and the community and stakeholders for considering the proposal.

The NSW Government is funding this \$20 million project as part of its \$246 million Pinch Point Program, which aims to reduce traffic delays, manage congestion and improve travel times on Sydney's major roads, particularly during weekday peak periods. The project includes:

- Widening Boundary Street on the northern side from the Pacific Highway to Melnotte Avenue
- Installing traffic lights on Corona Avenue at the intersection of the Pacific Highway
- Providing two dedicated left turn lanes from Boundary Street onto the Pacific Highway
- Providing one dedicated right turn lane from Boundary Street onto the Pacific Highway, as well as one shared right turn and through lane from Boundary Street to allow access into Corona Avenue
- Providing two dedicated eastbound lanes on Boundary Street between the Pacific Highway and Archer Street
- Providing a dedicated right turn lane from Boundary Street into Archer Street
- Making the Hill Street intersection left turn in and left turn out only
- Providing a shared path on the northern side of Boundary Street between Hill Street and Archer Street
- Providing pedestrian crossings at the traffic lights across Boundary Street at Archer Street for pedestrians and cyclists
- Providing an embankment or retaining wall on the northern side of Boundary Street
- New landscaping, and urban design elements, that have been developed in consultation with the Ku-ring-gai Municipal Council and Willoughby City Council
- Installing 'no stopping' zones on both sides of Corona Avenue for about 40 metres at the intersection of the Pacific Highway, removing six parking spaces on the northern side of Corona Avenue and two parking spaces on the southern side of Corona Avenue
- Providing four one hour car parking spaces along the southern side of Corona Avenue including relocating two existing one hour parking spaces from further west.

We have provided a map to explain the project (Appendix C).

We have decided to proceed with the proposed schedule of working up to five nights a week for an 18 month period and will work with local residents to minimise impacts where possible. We will also continue carrying out work during standard construction hours which are from 7am to 6pm between Mondays and Fridays and from 8am to 1pm on Saturdays.

We thank the community for their ongoing patience as we deliver this important road improvement project.

Contents

- Executive summary 3
- 1. Introduction..... 6
 - 1.1. Background 6
 - 1.2. The proposal..... 6
- 2. Consultation approach 8
 - 2.1. Consultation objectives 8
 - 2.2. How consultation was done 8
- 3. Consultation summary 8
 - 3.1. Overview 8
 - 3.2. Feedback summary and Roads and Maritime’s responses 9
- 4. Decision.....12
- 5. Next Steps12
- Appendix A – Have Your Say letter January/February 201613
- Appendix B – Distribution area.....15
- Appendix C – Project map16

Figures and tables

- Table 1 – How consultation was done 4
- Table 2 – Feedback summary and Roads and Maritime’s responses 6

1. Introduction

1.1. Background

Boundary Street is a two way road with three traffic lanes and passes under the North Shore railway line bridge near the intersection with the Pacific Highway. The rail bridge was upgraded in 2012, allowing for up to five lanes of traffic underneath the bridge on Boundary Street as well as providing improvements to pedestrian paths on both sides.

Boundary Street forms the boundary between the Willoughby and Ku-ring-gai Local Government Areas (LGAs) and is located in both LGAs.

Boundary Street carries about 37,000 vehicle movements per day and experiences major traffic delays during the morning and afternoon peak periods. This has an impact on the operational performance of intersections at Boundary Street and Pacific Highway and Boundary Street and Archer Street.

1.2. The proposal

The NSW Government is funding this \$20 million project as part of its \$246 million Pinch Point Program, which aims to reduce traffic delays, manage congestion and improve travel times on Sydney's major roads, particularly during weekday peak periods.

The benefits of the project are expected to include:

- Improving traffic flow on Boundary Street between the Pacific Highway, Northern Beaches and Chatswood retail and business hub
- Improving safety for cyclists and road users
- Improving safety for pedestrians who need to cross on the Pacific Highway and Corona Avenue, and on Boundary Street at Archer Street
- Improving bus manoeuvrability
- Improving pedestrian and cyclists facilities
- Enhancing and improving urban design
- Improving traffic flow and reliability for freight vehicles on Boundary Street which is a tertiary freight route between the Pacific Highway and the Northern Beaches.

The project includes:

- Widening Boundary Street on the northern side from the Pacific Highway to Melnotte Avenue
- Installing traffic lights on Corona Avenue at the intersection of the Pacific Highway
- Providing two dedicated left turn lanes from Boundary Street onto the Pacific Highway
- Providing one dedicated right turn lane from Boundary Street onto the Pacific Highway, as well as one shared right turn and through lane from Boundary Street to allow access into Corona Avenue
- Providing two dedicated eastbound lanes on Boundary Street between the Pacific Highway and Archer Street
- Providing a dedicated right turn lane from Boundary Street into Archer Street
- Making the Hill Street intersection left turn in and left turn out only
- Providing a shared path on the northern side of Boundary Street between Hill Street and Archer Street
- Providing pedestrian crossings at the traffic lights across Boundary Street at Archer Street for pedestrians and cyclists

- Providing an embankment or retaining wall on the northern side of Boundary Street
- Landscaping, and urban design elements, that have been developed in consultation with the Ku-ring-gai Municipal Council and Willoughby City Council
- Installing 'no stopping' zones on both sides of Corona Avenue for about 40 metres at the intersection of the Pacific Highway, removing six parking spaces on the northern side of Corona Avenue and two parking spaces on the southern side of Corona Avenue
- Providing four one hour car parking spaces along the southern side of Corona Avenue, including relocating two existing one hour parking spaces from further west.

2. Consultation approach

2.1. Consultation objectives

We consulted with the community in January and February 2016 to:

- Seek comment, feedback, ideas and suggestions for us to consider when developing the night work schedule
- Build a database of interested and concerned community members with whom we can continue to engage during the project.

2.2. How consultation was done

We sought feedback on the proposal between 30 January 2016 and 29 February 2016. Community members and stakeholders were encouraged to provide their feedback and make comments via email, mail or phone contact with the project team. Our consultation tools are outlined in Table 1.

Table 1 – How consultation was done

| | |
|-----------------------------------------------------|-----------------------------------------------------------------------------------------------------------------------------------------------------------------------------------------------------------------------------------------------------------------------------------------------------------------|
| Have your say letter – January 2016 (Appendix A) | <ul style="list-style-type: none">• Delivered to 2000 residents and businesses in Roseville as shown in Appendix B.• Direct emails were sent to local State Members of Parliament, Council, local transport, educational facilities, utilities and emergency services in the local area. |
| Website | <ul style="list-style-type: none">• A copy of the have your say letters was placed on the Roads and Maritime and NSW Government website |
| One on one discussions with the local community | <ul style="list-style-type: none">• We spoke with local community members who are known to the project team as part of the Have Your Say through one on one discussion, over email and via phone calls. |

3. Consultation summary

3.1. Overview

Roads and Maritime received comments from 14 people.

One comment was about the project, two were about community consultation, one was about construction and 19 were about the proposed night work construction schedule.

We would like to thank everyone who took time to review the proposal and provide feedback.

3.2 Feedback summary and Roads and Maritime's responses

Roads and Maritime has provided responses to all feedback received on this proposal. The responses are provided directly to the person who commented as well as in this report, which will be made available to the public. All comments have been considered to help Roads and Maritime make decisions on this proposal. Matters raised during consultation that are not within Roads and Maritime's area of responsibility have been forwarded to the relevant authority.

Table 2 – Consultation overview

| Category | Matters raised | Roads and Maritime response |
|---------------------------------------------|---------------------------------------------------------------------------------------------------------------------------|--------------------------------------------------------------------------------------------------------------------------------------------------------------------------------------------------------------------------------------------------------------------------------------------------------------------------------------------------------------------------------------------------------------------------------------------------------------------------------------------------------------------------------------------------------------------------------------------------------------------------------------------------------------------------------------------------------------------------------------------------------------------------------------------------------------------------------------------------------------------------------------------------------------------------------------------------------------------------------------------------------------------------------------------------------|
| <p>Night work</p> <p>19 comments</p> | <p>Noisy night work should not be allowed to continue until midnight</p> | <p>Roads and Maritime relies on road occupancy licences (ROL) from the Traffic Management Centre to carry out construction work on the road network. Current ROLs for some sections of the project do not allow access to the area for construction work until 9pm, in order to get through the required work each evening we need to carry out noisier work until midnight.</p> <p>Roads and Maritime has changed our design so we can carry out as much day time work as possible.</p> |
| | <p>Given the duration of night work, local treatments or compensation should be offered to impacted community members</p> | <p>Roads and Maritime carries out significant night work across the road network and are not able to offer local treatments or compensation. Our team is available on 1800 332 660 to discuss the construction schedule and manage night construction impacts.</p> <p>Also, Roads and Maritime will carry out the work under our Environmental Management Plan and implement standard safeguards including:</p> <ul style="list-style-type: none"> • Work would be staged to minimise noise impacts by carrying out the noisiest work before midnight • Where alternative plant is available, the plant emitting the lowest noise levels will be selected. Similarly, where an alternative method for completing work would result in reduced noise emissions, it would be considered • Reversing alarms that have a tonal noise character are avoided during out-of-hours activities • Engines would be switched off when equipment is not in use for extended periods (for example, more than 30 minutes). |

| Category | Matters raised | Roads and Maritime response |
|-------------------|----------------------------------------------------------------------------------------------------------------------------------------|-------------------------------------------------------------------------------------------------------------------------------------------------------------------------------------------------------------------------------------------------------------------------------------------------------------------------------------------------------------------------------------------------------------------------------------------------------------------------------------------------------------------------------------------------------------------------------------------------------------------------------------------------------------------------------------------------------------------------------------------------------------------------------------------------------------------------------------------------------------------------------------------------------------------------------------|
| Night work | What respite will be offered to HSC students impacted by this work? | Roads and Maritime will not carry out night work during the HSC period. In addition, we will work with local community members to minimise impacts to students studying for their HSC. Our team is available on 1800 332 660 to discuss the construction schedule and manage night construction impacts. |
| | The work should not be allowed to happen five nights a week every week, respite is needed | Roads and Maritime will not work five nights a week, at the same location for the duration of the work. We would attempt to move between work sites as much as practical for the project. We are investigating options for how we will be able to give the local community better awareness of our night work schedule as we progress this project, so that they know exactly when we will be working outside their home. |
| | Why isn't any night work carried out on Saturday nights when people are not at home? | Roads and Maritime relies on road occupancy licences (ROL) from the Traffic Management Centre to carry out construction work on the road network. Roads and Maritime are attempting to negotiate current ROLs for Saturday nights however, the Traffic Management Centre are currently not allowing ROLs for this section of road on a Saturday night due to high traffic volumes. |
| | All of this work is causing undue stress on residents which impacts their day to day lives, alternatives to night work should be found | For the safety of motorists and workers, some of the work cannot be carried out under live traffic and must be done under traffic control. Roads and Maritime relies on road occupancy licences (ROL) from the Traffic Management Centre to put lane closures in place. To minimise the impact on traffic, current ROLs for some sections of the project do not allow lane closures to be put into place until 9pm. Working five nights a week and carrying out noisier work until midnight shortens the construction period. In addition, we have amended our design to allow us to carry out as much work during the day as possible. Roads and Maritime are attempting to negotiate current ROLs so that work can be carried out on Saturday nights however, the Traffic Management Centre are currently not allowing ROLs for this section of road on a Saturday night due to high traffic volumes. |

| Category | Matters raised | Roads and Maritime response |
|---------------------------------------------------|------------------------------------------------------------------------------------------------------------------|--------------------------------------------------------------------------------------------------------------------------------------------------------------------------------------------------------------------------------------------------------------------------------------------------------------------------------------------------------------------------------------------------------------------------------------------------------------------------------------------------------------------------------------------------------------------------------------------------------------------------------------------------------------------------------------------------------------------------------------------------------------------------------------------------------------------------------------------------------------------------------------------|
| Night work | What mitigation measures will be in place to minimise impact to residents? | <p>Roads and Maritime will carry out the work under our Environmental Management Plan and implement standard safeguards including:</p> <ul style="list-style-type: none"> • Work would be staged to minimise noise impacts by carrying out the noisier work before midnight • We would move between work locations so that residents are not impacted 5 nights a week every week • Where alternative plant is available, the plant emitting the lowest noise levels will be selected. Similarly, where an alternative method for completing work would result in reduced noise emissions, it would be considered • Reversing alarms that have a tonal noise character are avoided during out-of-hours activities • Engines would be switched off when equipment is not in use for extended periods (for example, more than 30 minutes). |
| Project One comment | Green arrows are needed from the Pacific Highway into Clanville Street to facilitate access to the Roseville CBD | The objectives of this proposal are to improve safety and ease congestion along Boundary Street. Improvements to the intersection of the Pacific Highway and Clanville Street are outside the scope of this proposal. Roads and Maritime will consider this feedback if planning any future upgrades the area. |
| Community consultation Two comments | Not all impacted community members received a Have Your Say letter. | <p>The have your say notification was distributed via letterbox to about 2000 homes and businesses. It was also emailed to stakeholders including Council and emergency services.</p> <p>Also, we extended the consultation period by two weeks when we were made aware that some community members had not received the notification.</p> |
| Construction One comment | The alternative path provided is not well lit and muddy | <p>Our construction team has reviewed the temporary lighting and finalised work in this area. Roads and Maritime apologises for any inconvenience.</p> <p>Should any future changes to pathways be needed we will ensure they are safely lit.</p> |

4. Decision

We have decided to proceed with the proposed schedule of working up to five nights a week for an 18 month period and will work with local residents to minimise impacts where possible. We will also continue carrying out work during standard construction hours which are 7am to 6pm, Monday to Friday and 8am to 1pm on Saturdays.

We thank everyone who provided comments and the community and stakeholders for considering the proposal.

5. Next Steps

Roads and Maritime will continue with construction of this project. The community will be kept informed as the project progresses.

We thank the community for their ongoing patience as we deliver this important road improvement project.

Appendix A – Have Your Say letter January/February 2016



January 2016

Have your say – Night work on Boundary Street, Roseville from late February 2016

The NSW Government is funding this \$20 million project between the Pacific Highway and Melnotte Avenue as part of the \$246 million Pinch Point Program, which aims to reduce delays, manage congestion and maintain travel times on Sydney's major roads, particularly during weekday peak periods.

Roads and Maritime Services is seeking your feedback by **Friday 19 February** on a proposal to work up to **five nights** a week at regular intervals and to carry out the noisiest work until **midnight** throughout construction of this project.

Have your say on the night work schedule

Our proposed schedule involves working up to **five nights** a week and carrying out noisy work until **midnight**. Our working hours will be from **8pm to 5am** excluding **Saturdays** and from **7am to 6pm** between **Mondays and Fridays** and from **8am to 1pm** on **Saturdays**. Our proposed night work schedule is:

- **February to May** – Utility adjustments, stormwater drainage and widening Boundary Street east of the railway bridge
- **June to September** – Utility adjustments, stormwater drainage and road widening on Boundary Street west of the railway bridge and widening on the Pacific Highway
- **October to January 2017** – Completing road widening and starting construction of medians, asphaltting, line marking and installing new traffic lights at the intersection of Boundary St and Pacific Highway
- **January 2017 to mid-2017** – Asphaltting, landscaping and final drainage work.

How will the work affect you?

There will be some noise associated with this work. We have included a table to help explain the type of equipment and activities that will be used.

| Noisier construction activities and equipment | Less noisy construction activities and equipment |
|-------------------------------------------------------------------------------------------------------------------------------------------------------------------------------------------------------------------------------------------------------------------------------------------------|-----------------------------------------------------------------------------------------------------------------------------------------------------------------------------------------------------------------------------------------------------------------------------------------------------------------------------------------------------------------------------|
| <ul style="list-style-type: none"> Demolishing pavement, kerb, gutter, medians and other concrete Sawcutting concrete or asphalt Jackhammering pavement, kerb, gutter, medians and other concrete Excavating for services (jackhammering and digging) | <ul style="list-style-type: none"> Removing (milling) asphalt Replacing pavement, kerb, gutter, median and asphalt Installing street lights and traffic lights Investigating and excavating (non-destructive) Vehicles moving including vacuum excavation trucks and reversing tones Compacting new road layers |

How can you give feedback?

We welcome your feedback on our proposed night work schedule by **Friday 19 February**. Please send your written comments to our delivery partner:

DownerMouchel
 Communication and Stakeholder Engagement
 PO Box 6465
 North Ryde NSW 2113
 Or email enquiries_nsw@downermouchel.com

We will carefully consider your feedback and continue to keep you updated as the project progresses.

Contact

If you have any questions, please call our delivery partner DownerMouchel on 1800 332 660 or email enquiries_nsw@downermouchel.com. For more information on our projects, visit rms.nsw.gov.au

For the latest traffic updates, you can call 132 701, visit livetraffic.com or download the Live Traffic NSW App.

Thank you for your patience during this important work.



Translating and Interpreting Service

If you need an interpreter, please call TIS National on 131 450 and ask them to call DownerMouchel on 1800 332 660.

Arabic
 إذا كنت بحاجة إلى مترجم، الرجاء الاتصال بخدمة الترجمة الوطنية والتلفونية (TIS National) على الرقم 1800 332 660 وطلب منهم الاتصال بـ DownerMouchel على الرقم 1800 332 660.

Cantonese
 如果你需要口譯員，請致電 131 450 聯絡翻譯和口譯服務署 (TIS National)，要求他們致電 1800 332 660 聯絡 DownerMouchel。

Mandarin
 如果你需要口譯員，請致電 131 450 聯繫翻譯和口譯服務署 (TIS National)，要求他們致電 1800 332 660 聯繫 DownerMouchel。

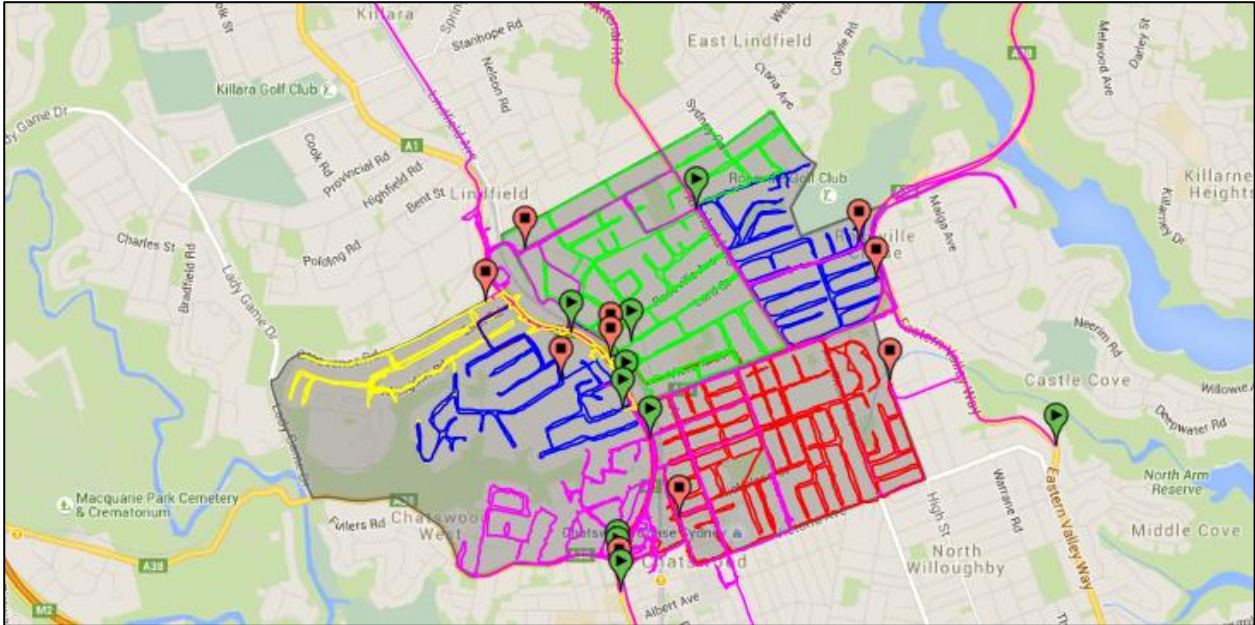
Greek
 Αν χρειάζεστε διαμετρήσει, παρακαλούμε να τηλεφωνήσετε στην Υπηρεσία Μεταφράσεων και Διαμετρήσεων (Εθνική Υπηρεσία TIS) στο 131 450 και ζητήστε να τηλεφωνήσουν DownerMouchel στο 1800 332 660.

Russian
 Если вам нужен переводчик, то позвоните в Службу письменного и устного перевода (TIS National) по номеру 131 450 и скажите переводчику, что вам нужно позвонить в Downer Mouchel по номеру 1800 332 660.

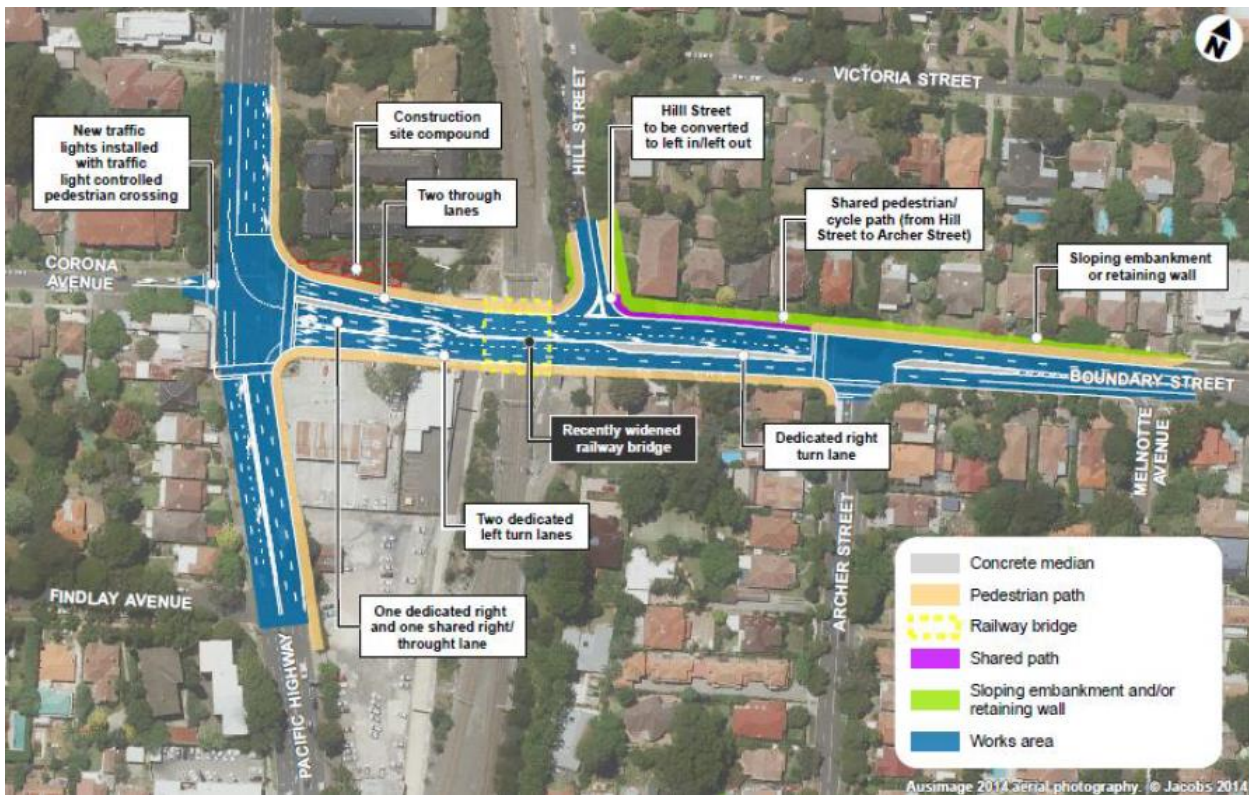
Korean
 통역사가 필요하시면 번역통역서비스 (TIS National) 에 131 450 으로 연락하여 이들에게 1800 332 660 번으로 DownerMouchel 에 전화하도록 요청하십시오.

Vietnamese
 Nếu cần thông ngôn viên, xin quý vị gọi cho Dịch Vụ Thông Phiên Dịch (TIS Toàn Quốc) qua số 131 450 và nhờ họ gọi cho DownerMouchel qua số 1800 332 660.

Appendix B – Distribution area



Appendix C – Project map





rms.nsw.gov.au



13 22 13



Customer feedback
Roads and Maritime
Locked Bag 928,
North Sydney NSW 2059

April 2016
RMS 16.115
ISBN: 978-1-925507-03-4