

Temporary closure of Pacific Highway right turn lane into Lisarow Station carpark from Sunday 3 November

The NSW Government is investing \$178 million to duplicate the Pacific Highway between Ourimbah Street and Parsons Road at Lisarow to improve traffic flow and safety.

The dedicated right turn lane on the Pacific Highway into the commuter carpark at Lisarow Station will be temporarily closed from **Sunday 3 November 2019**, weather permitting.

The right turn lane will be temporarily closed for 18 months to allow work to continue on the Pacific Highway duplication, including relocation of utility services next to the carpark.

Traffic changes

Road users wanting to access the carpark from the north will have to use a detour via the roundabout at Parsons Road and then turn left into the carpark. We have included a map to show the detour route.

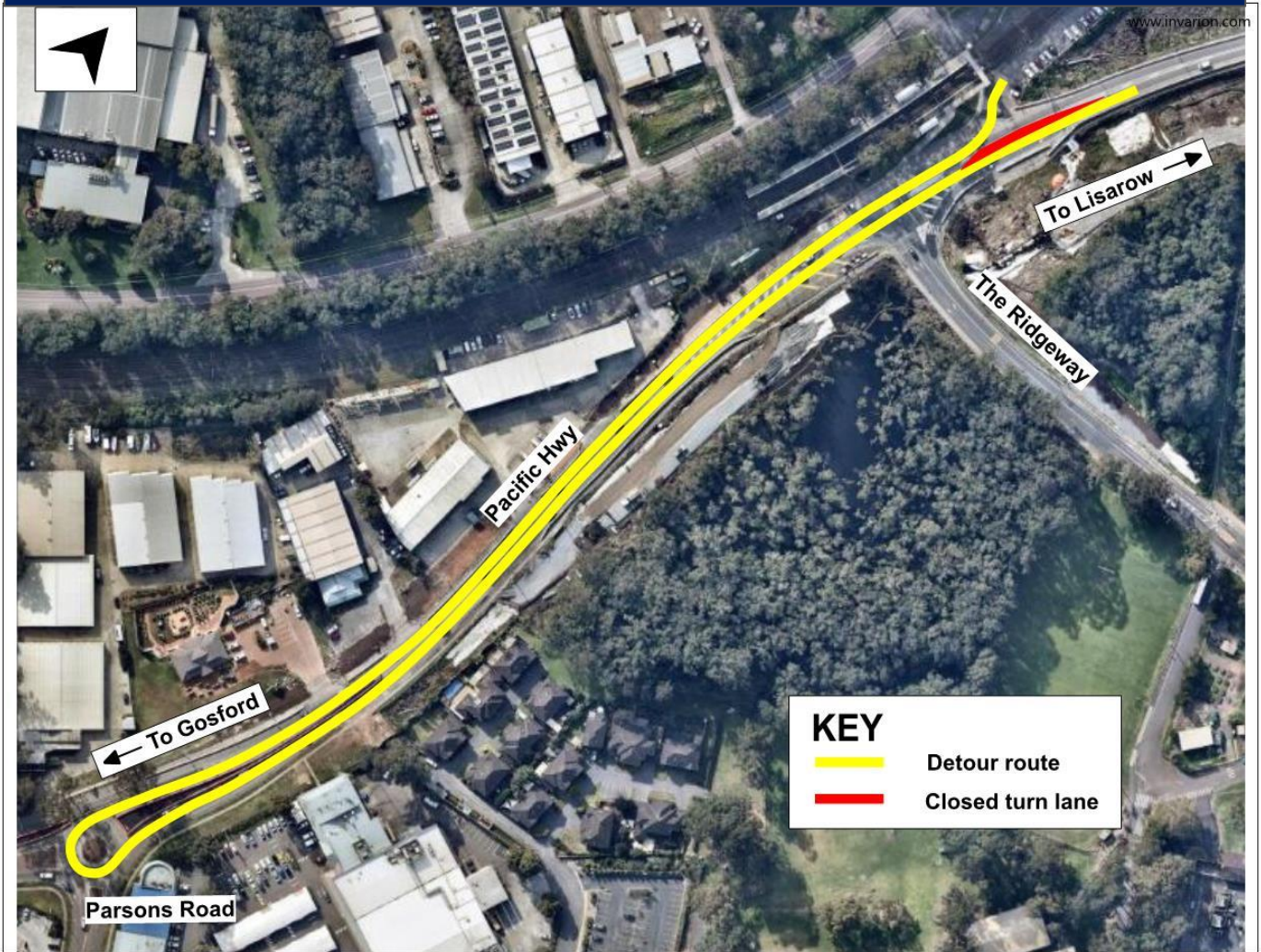
Contact

If you have any questions or complaints, please contact the project information line on 1800 560 667.

For more information on our projects, visit rms.nsw.gov.au.

We thank you for your patience while this work is carried out.

Changed traffic arrangements, Lisarow Station carpark



If you need help understanding this information, please contact the Translating and Interpreting Service on 131 450 and ask them to call us on 1800 560 667.