



Australian Government

BUILDING OUR FUTURE



June 2020

Night work on the Princes Highway, Nowra for utility investigations.

Work is progressing on the Nowra Bridge project, with construction expected to be complete in mid-2024.



Utility investigations will occur on the Princes Highway and local roads, Nowra

What are we doing?

We are carrying out utility investigations on the Princes Highway and surrounding local roads as part of the Nowra Bridge project. Work will include sawing or excavating holes in the ground to identify utility services.

The work will be carried out from **Tuesday 30 June** for up to five nights (weather permitting). Our work hours will be between **6pm and 5am** to reduce the impacts to motorists and pedestrians.

Should the work need to be postponed, new dates will be advertised on variable message signs and on the project website. A map of the work area is provided over the page.

How will the work affect you?

There may be some noise and light associated with this work. We will make every effort to minimise disruption to residents by scheduling noisier activities earlier in the night. Where possible, we will position equipment away from properties and turn off machinery when not in use.

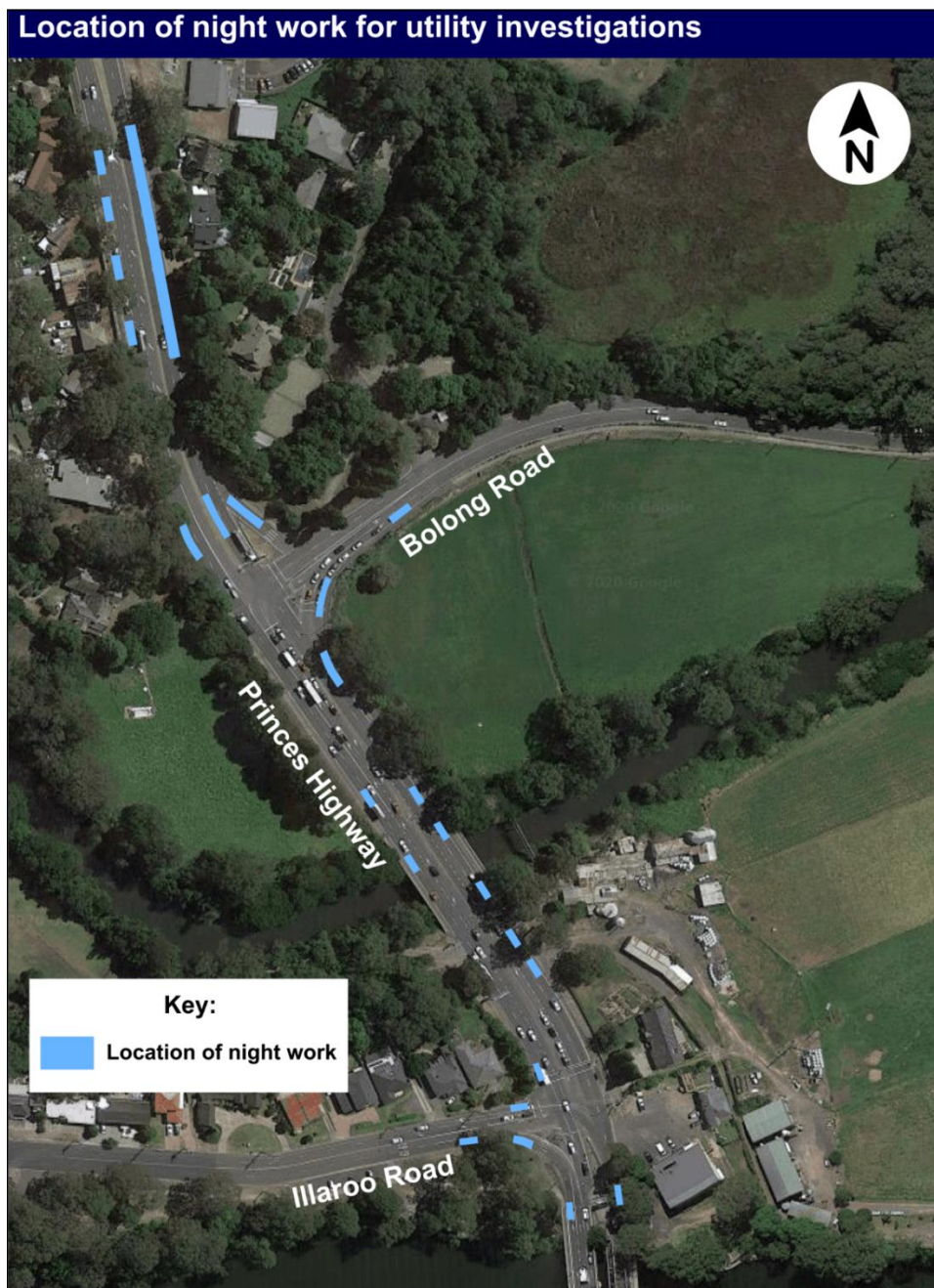
Residents will have access to and from their properties at all times.

Traffic changes

There will be temporary lane closures on the Princes Highway between Nowra Bridge and Mattes Way, and on Illaroo Road and Bolong Road during the night work. Motorists should allow up to 10 minutes additional travel time during night work. Stop/slow traffic control and a reduced speed limit of 40km/hr will also be in place for the safety of motorists and our workers.

Please keep to speed limits and follow the direction of traffic controllers and signs. For the latest traffic updates, you can call 132 701, visit livetraffic.com or download the Live Traffic NSW App.

Thank you for your patience during this important work.



Contact

If you have any questions, please contact the project team on 1800 331 713 or NowraBridgeProject@fultonhogan.com.au or visit nswroads.work/NowraBridge

For more information on our projects, visit roads-maritime.transport.nsw.gov.au.



If you need help understanding this information, please contact the Translating and Interpreting Service on 131 450 and ask them to call us on 1800 331 713