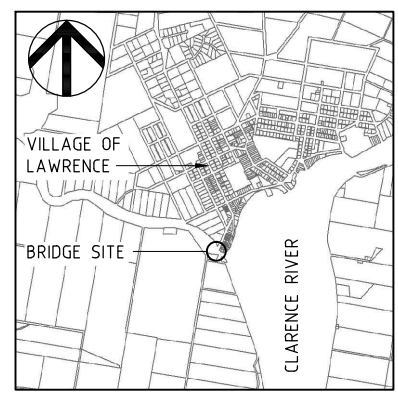
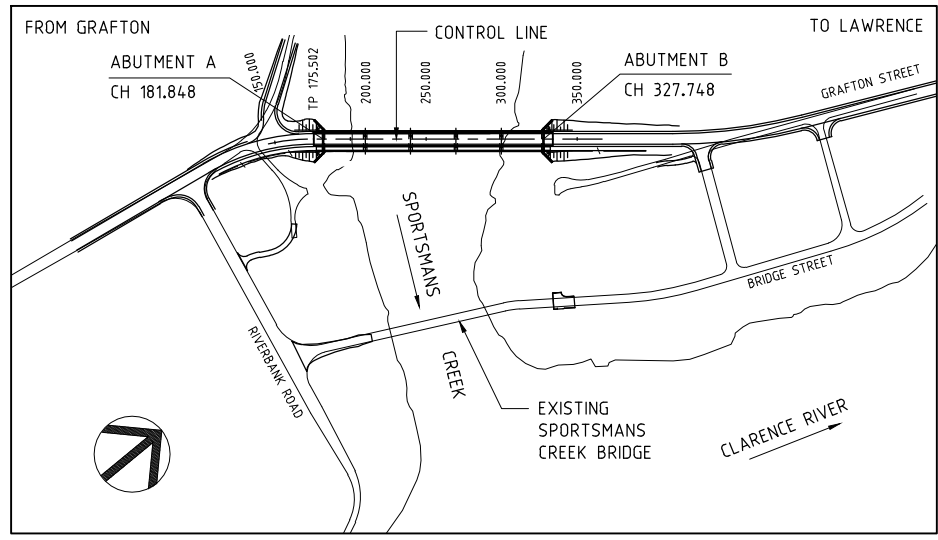
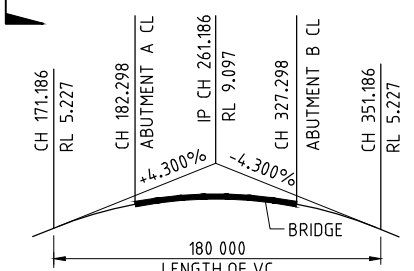
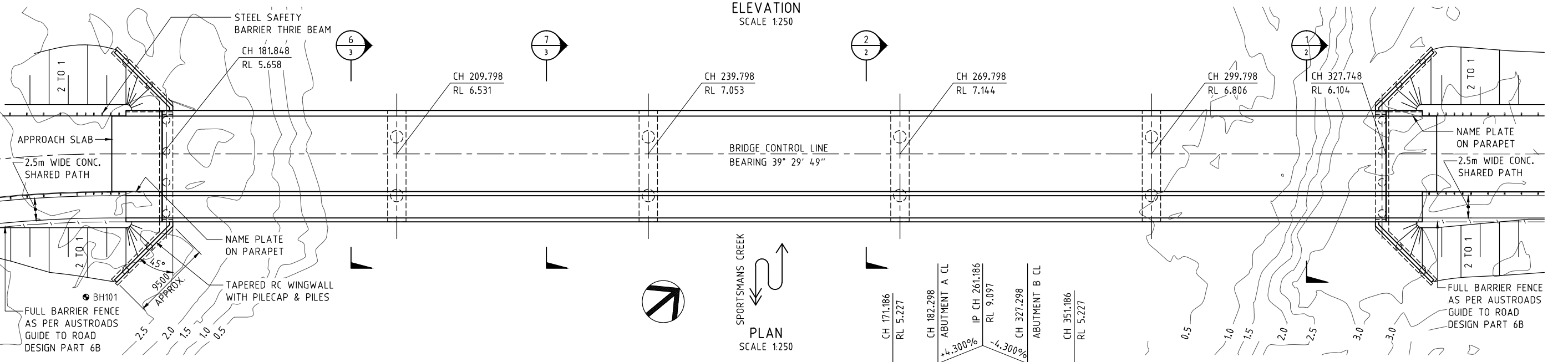
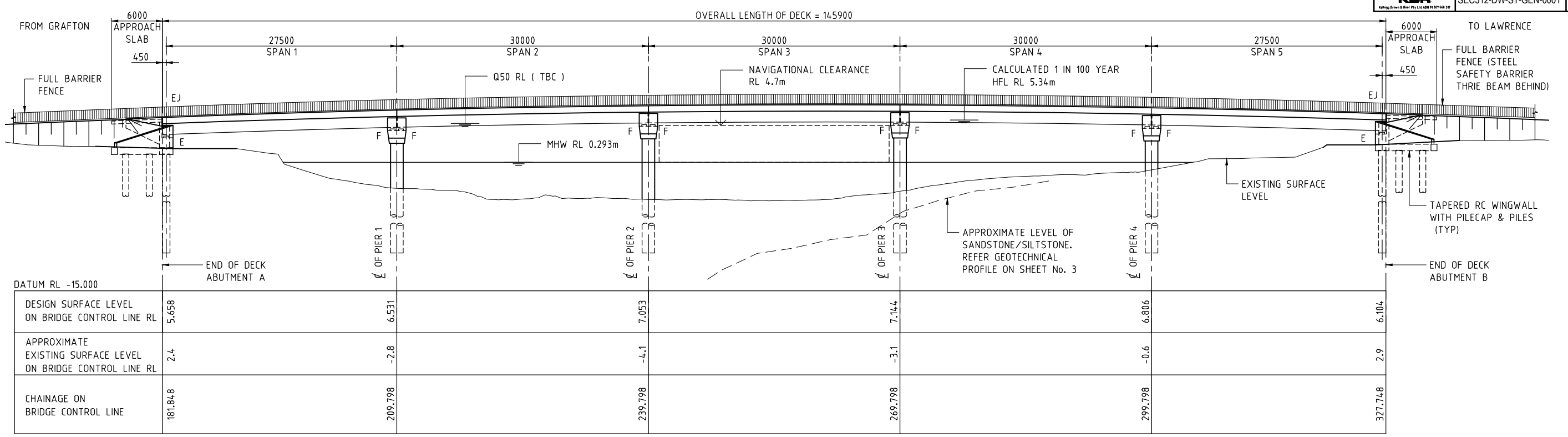


# Appendix A

---

Design drawings



**GENERAL NOTES**

SCALE 1:250

DIMENSIONS ARE IN MILLIMETRES.  
 CHAINAGES AND REDUCED LEVELS ARE IN METRES.  
 REDUCED LEVELS ARE RELATED TO AUSTRALIAN HEIGHT DATUM

E DENOTES EXPANSION BEARING  
 F DENOTES FIXED BEARING  
 EJ DENOTES EXPANSION JOINT  
 BH101 DENOTES BOREHOLE. REFER GEOTECHNICAL INVESTIGATION AND INTERPRETATION REPORT No. 137622029-005-R-Rev1 BY GOLDER ASSOCIATES FOR DETAILS

CONCRETE BRIDGE DECK WATERPROOFING MEMBRANE SHALL CONFORM TO ROADS AND MARITIME SERVICES SPECIFICATION B344 OR BPC2005/02.  
 WATERPROOFING MEMBRANE SHALL BE OVERLAPPED WITH 75mm THICK ASPHALT.

B	5 AUGUST 2014	RMS PM COMMENTS AMENDMENTS			
A	25 JULY 2014	20% CONCEPT DESIGN FOR COMMENT			
ISSUE	DATE	REVISION	PREP	CHECK	AUTH

**CLARENCE VALLEY COUNCIL**  
**MR152 - GRAFTON TO YAMBA ROAD**  
**BRIDGE OVER SPORTSMANS CREEK**  
**CONCEPT DRAWINGS - SHEET 1**

Kellogg Brown & Root Pty Ltd  
**KBR**  
 ABN 91 007 660 317

TRANSPORT, ROADS AND MARITIME SERVICES  
 BRIDGE AND STRUCTURAL ENGINEERING BRANCH  
 110 GEORGE STREET PARRAMATTA NSW 2150  
 PHONE (02) 8837-0802 FACSIMILE (02) 8837-0055  
 CLIENT:

PREPARED	CHECKED	REGISTRATION No OF PLANS
DESIGN		
DRAWING D. CARTER	B. CONDON	BRIDGE NUMBER
		ISSUE STATUS: PRELIMINARY
		SHEET No 1 ISSUE

**ACCEPTED**

PRINCIPAL BRIDGE ENGINEER

DATE

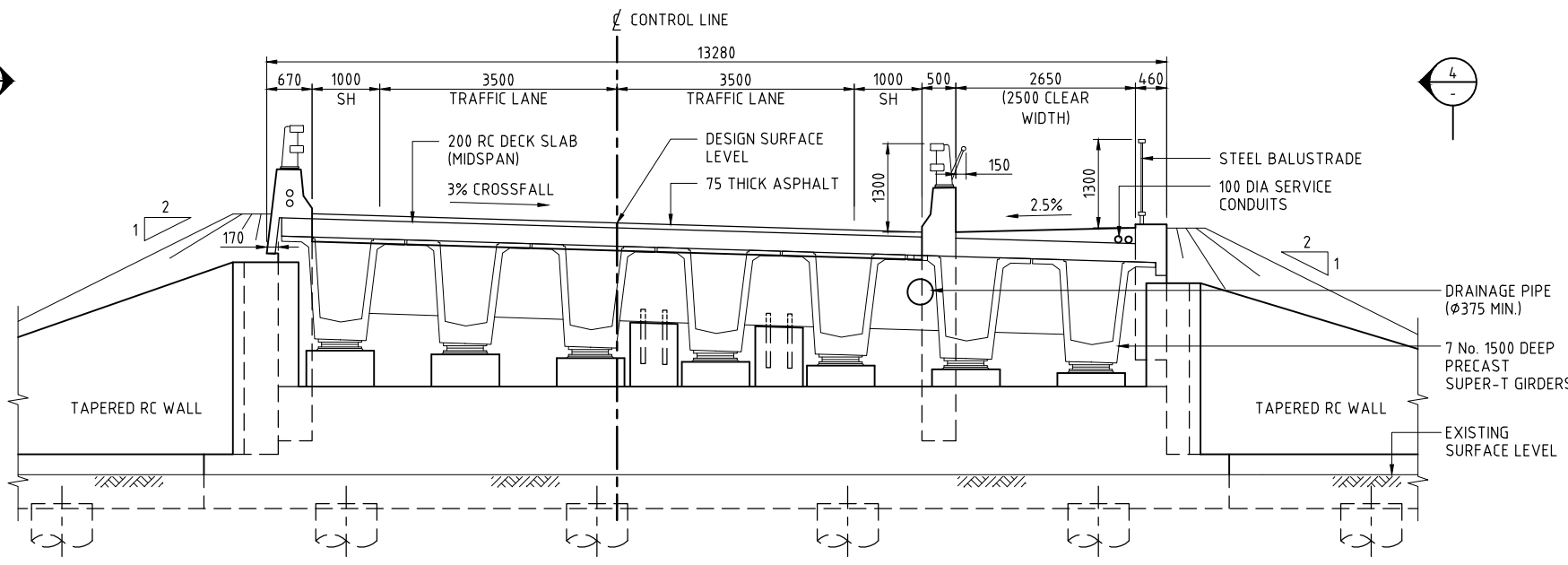
O:\G&I\CAD\PROJECTS\DRAWINGS\STRUCTURAL\SEC312-DW-ST-GEN-0001.DWG

Wednesday, 6 August 2014, 10:17:27 AM

THIS DRAWING IS CONFIDENTIAL AND SHALL ONLY BE USED FOR THE PURPOSE OF THE NOMINATED PROJECT

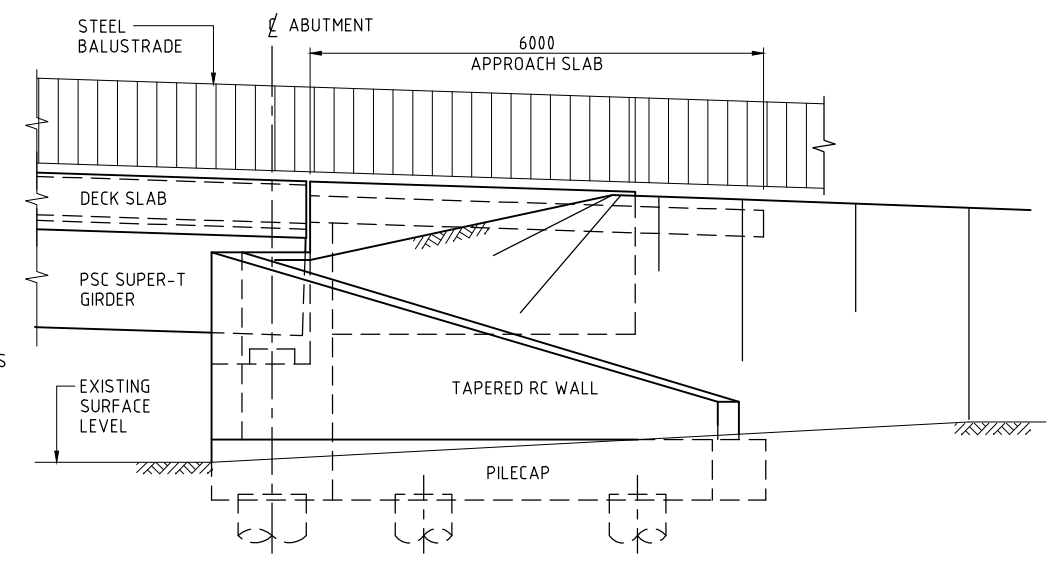
3

4

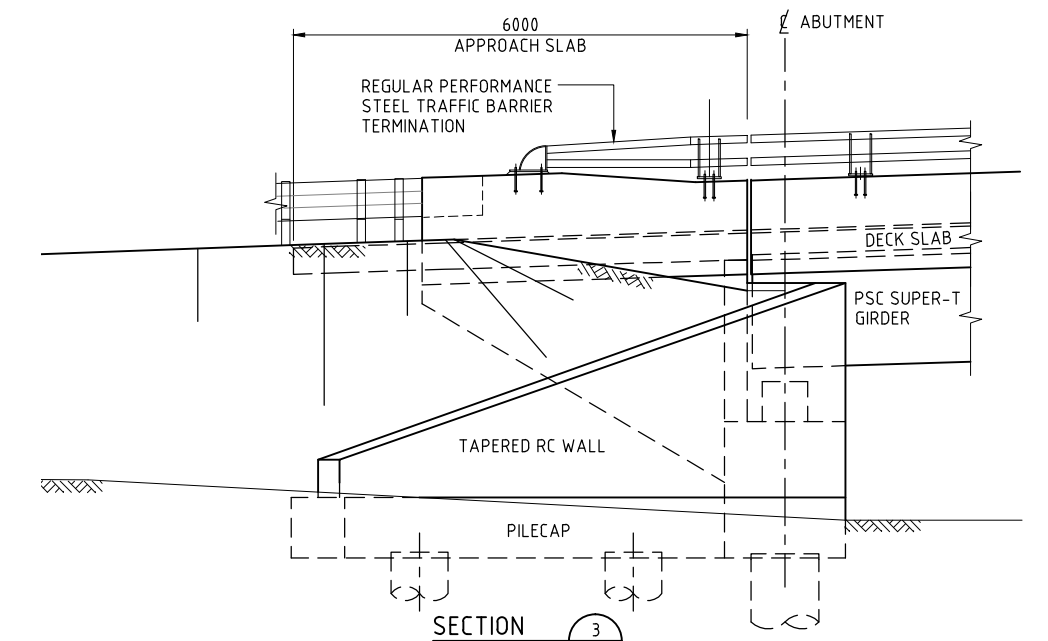


SECTION 1  
SCALE 1:50

TYPICAL SECTION AT ABUTMENTS  
(ABUTMENT B SHOWN)



SECTION 4  
SCALE 1:50



SECTION 3  
SCALE 1:50

GENERAL NOTES



FOR OTHER GENERAL NOTES RELATING TO THIS DRAWING, SEE SHEET No 1

B	5 AUGUST 2014	RMS PM COMMENTS AMENDMENTS			
A	25 JULY 2014	20% CONCEPT DESIGN FOR COMMENT			
ISSUE	DATE	REVISION	PREP	CHECK	AUTH

CLARENCE VALLEY COUNCIL  
 MR152 - GRAFTON TO YAMBA ROAD  
 BRIDGE OVER SPORTSMANS CREEK

CONCEPT DRAWINGS - SHEET 2

Kellogg Brown & Root Pty Ltd  
**KBR**  
 ABN 91 007 660 317

TRANSPORT, ROADS AND MARITIME SERVICES  
 BRIDGE AND STRUCTURAL ENGINEERING BRANCH  
 110 GEORGE STREET PARRAMATTA NSW 2150  
 PHONE (02) 8837-0802 FACSIMILE (02) 8837-0055  
 CLIENT:

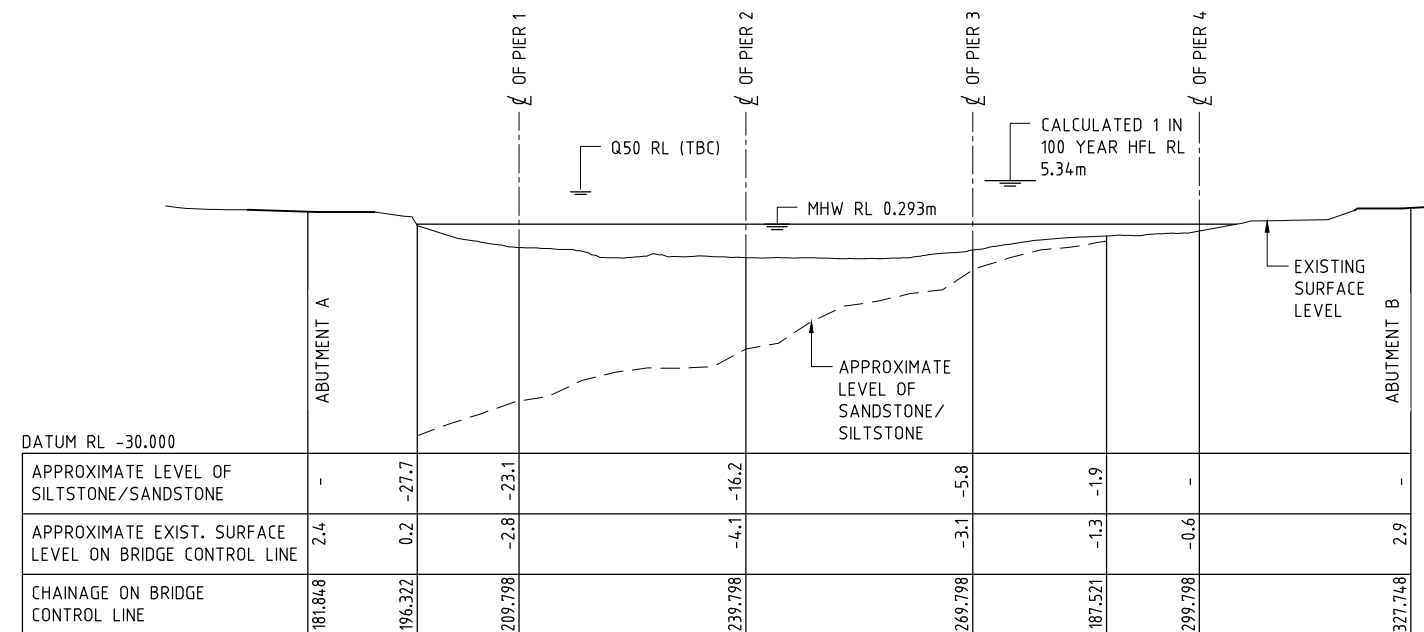
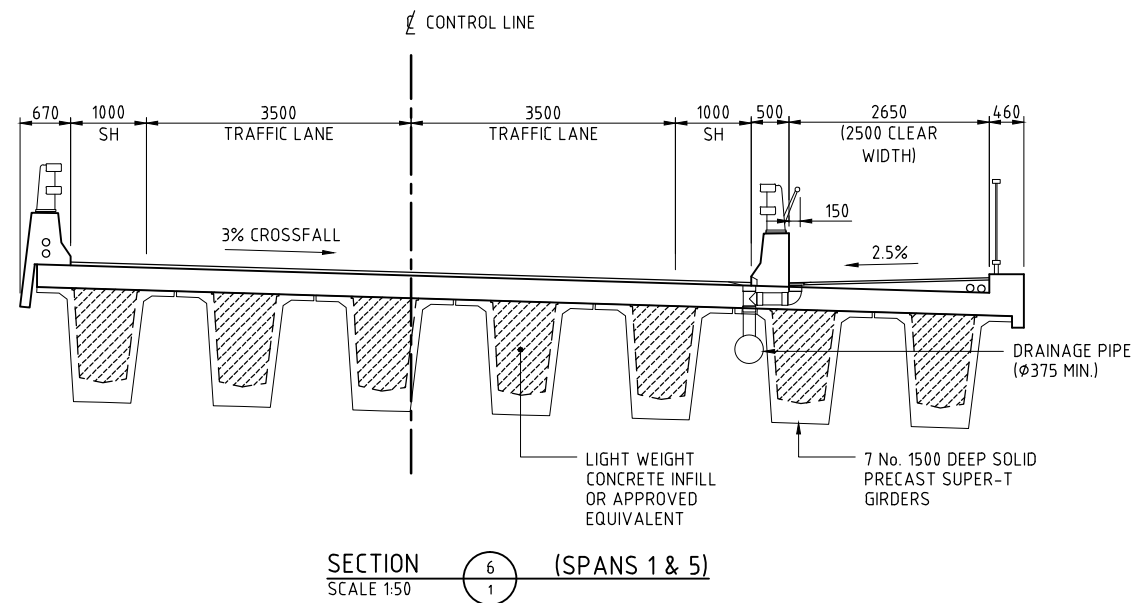
PREPARED	CHECKED	REGISTRATION No OF PLANS
DESIGN		BRIDGE NUMBER
DRAWING D. CARTER	B. CONDON	ISSUE STATUS: PRELIMINARY
		SHEET No 2 ISSUE B

ACCEPTED  
 \_\_\_\_\_  
 PRINCIPAL BRIDGE ENGINEER  
 DATE \_\_\_\_\_

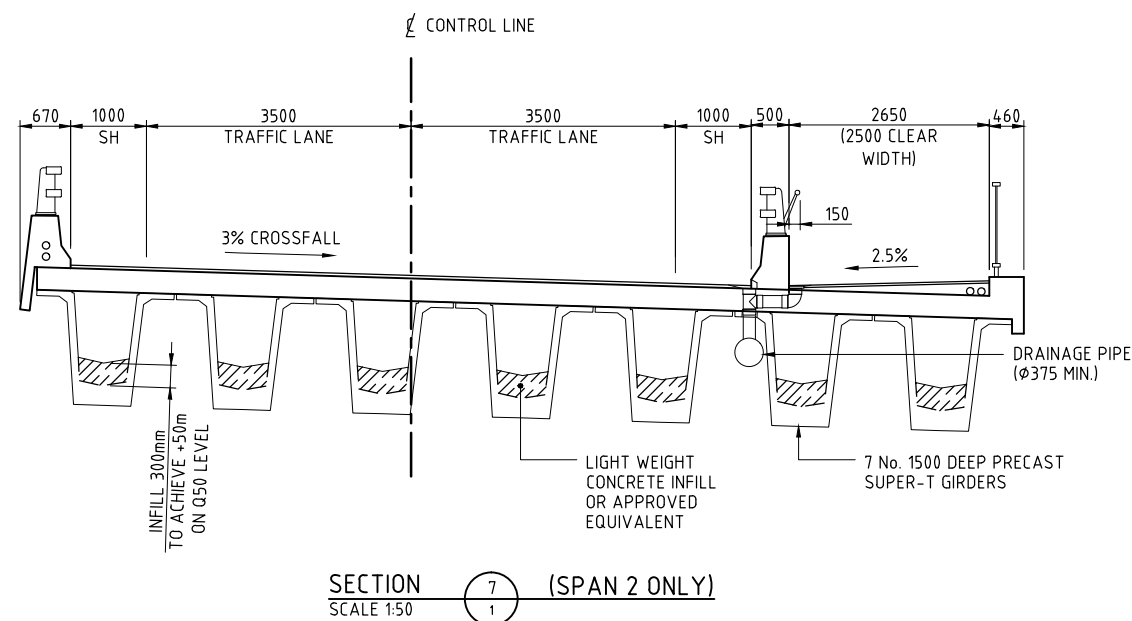
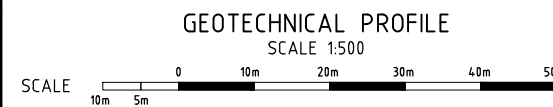
O:\G&R\CAD\PROJECTS\SEC312\DRAWINGS\STRUCTURAL\SEC312-DW-ST-GEN-0002.DWG

Wednesday, 6 August 2014 10:23:13 AM

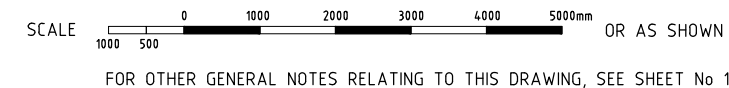
THIS DRAWING IS CONFIDENTIAL AND SHALL ONLY BE USED FOR THE PURPOSE OF THE NOMINATED PROJECT



NOTE:  
 DRAWINGS TO BE READ IN CONJUNCTION WITH  
 GEOTECHNICAL INVESTIGATION AND  
 INTERPRETATION REPORT No.  
 137622029-005-R-Rev1 BY GOLDER ASSOCIATES



GENERAL NOTES



B	5 AUGUST 2014	RMS PM COMMENTS AMENDMENTS			
A	25 JULY 2014	20% CONCEPT DESIGN FOR COMMENT			
ISSUE	DATE	REVISION	PREP	CHECK	AUTH

CLARENCE VALLEY COUNCIL  
 MR152 - GRAFTON TO YAMBA ROAD  
 BRIDGE OVER SPORTSMANS CREEK

CONCEPT DRAWINGS - SHEET 3

Kellogg Brown & Root Pty Ltd  
**KBR**  
 ABN 91 007 660 317

TRANSPORT, ROADS AND MARITIME SERVICES  
 BRIDGE AND STRUCTURAL ENGINEERING BRANCH  
 110 GEORGE STREET PARRAMATTA NSW 2150  
 PHONE (02) 8837-0802 FACSIMILE (02) 8837-0055  
 CLIENT:

PREPARED	CHECKED	REGISTRATION No OF PLANS	
DESIGN		BRIDGE NUMBER	
DRAWING	D. CARTER	ISSUE STATUS: PRELIMINARY	
	B. CONDON	SHEET No	3
		ISSUE	B

ACCEPTED  
 \_\_\_\_\_  
 PRINCIPAL BRIDGE ENGINEER  
 DATE \_\_\_\_\_