



Australian Government

BUILDING OUR FUTURE



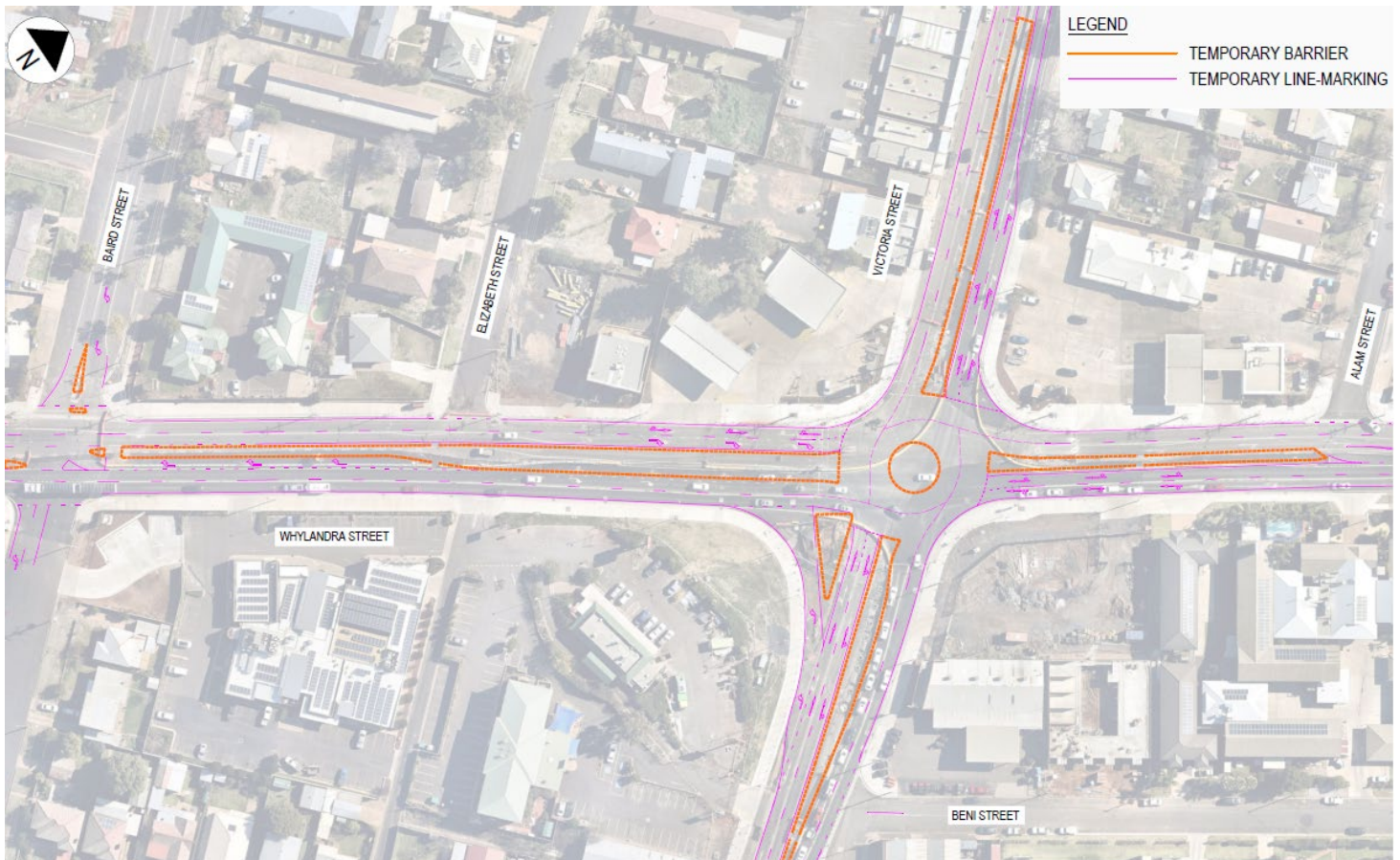
August 2021

Traffic light change, Newell Highway and Mitchell Highway intersection upgrade in Dubbo from Friday 13 August

Transport for NSW is continuing work on the Newell Highway and Mitchell Highway intersection upgrade in Dubbo. As part of this next stage of work, we will **switch off the temporary traffic signals, install a temporary roundabout before we switch on the permanent traffic signals** at the end of the year.

Work will be underway continually from **7pm Friday, 13 August until 7am Monday, 16 August** to install the temporary roundabout at the intersection and carry out the new pavement works on the western leg of the Mitchell Highway.

Map showing traffic changes



What will we be doing?

From 7pm Friday, 13 August through until 7am Monday, 16 August 2021 we will work continually on:

- Completing work on the new pavement in the western half of the intersection to allow a temporary roundabout to be installed. A detour will be in place while the work is being carried out
- Opening the temporary roundabout at the intersection. This roundabout will allow right hand turn movements from all four legs of the intersection
- Road work to facilitate these changes including barrier removal and replacement, traffic control, lane changes and line marking

These dates are subject to change based on the progress of the work, weather and site conditions. If any changes occur in our work schedule, we will provide additional notification outlining the change of dates to directly impacted stakeholders.

How will the work affect you?

Our work needs to be carried out during the day and the night to reduce safety risks to the workers and motorists. These work hours have been planned to minimise the impact to the wider community.

We will attempt to complete the noisiest work prior to midnight.

Traffic changes

While this work is underway, a road closure on the western side of Mitchell Highway will be in place as well as restricted right turn movement from Newell Highway onto Mitchell Highway, which may affect travel times. The detour via Baird Street and Young Street is expected to add around five minutes to your travel time.

Please keep to speed limits and follow the direction of traffic controllers and signs. For the latest traffic updates, you can call 132 701, visit livetraffic.com or download the Live Traffic NSW App.

Detour arrangements

Motorists will need to detour via Baird Street and Young Street to access Mitchell Highway. Resident's access will be maintained via the Young Street & Mitchell Highway intersection.

All vehicles will be required to use the detour routes in place while the western leg of Mitchell Highway is closed. This will include local residents, emergency services and buses.

We have allowed for local businesses along the western leg of the Mitchell Highway to have their accesses maintained throughout this closure. We apologise for the inconvenience and appreciate your understanding.

Contact

If you have any questions, please contact Transport for NSW on 1800 803 818 or email dubboprojects@transport.nsw.gov.au

For more information on our project, visit nswroads.work/newell

Thank you for your patience during this important work.



If you need help understanding this information, please contact the Translating and Interpreting Service on 131 450 and ask them to call 1800 803 818