



Australian Government

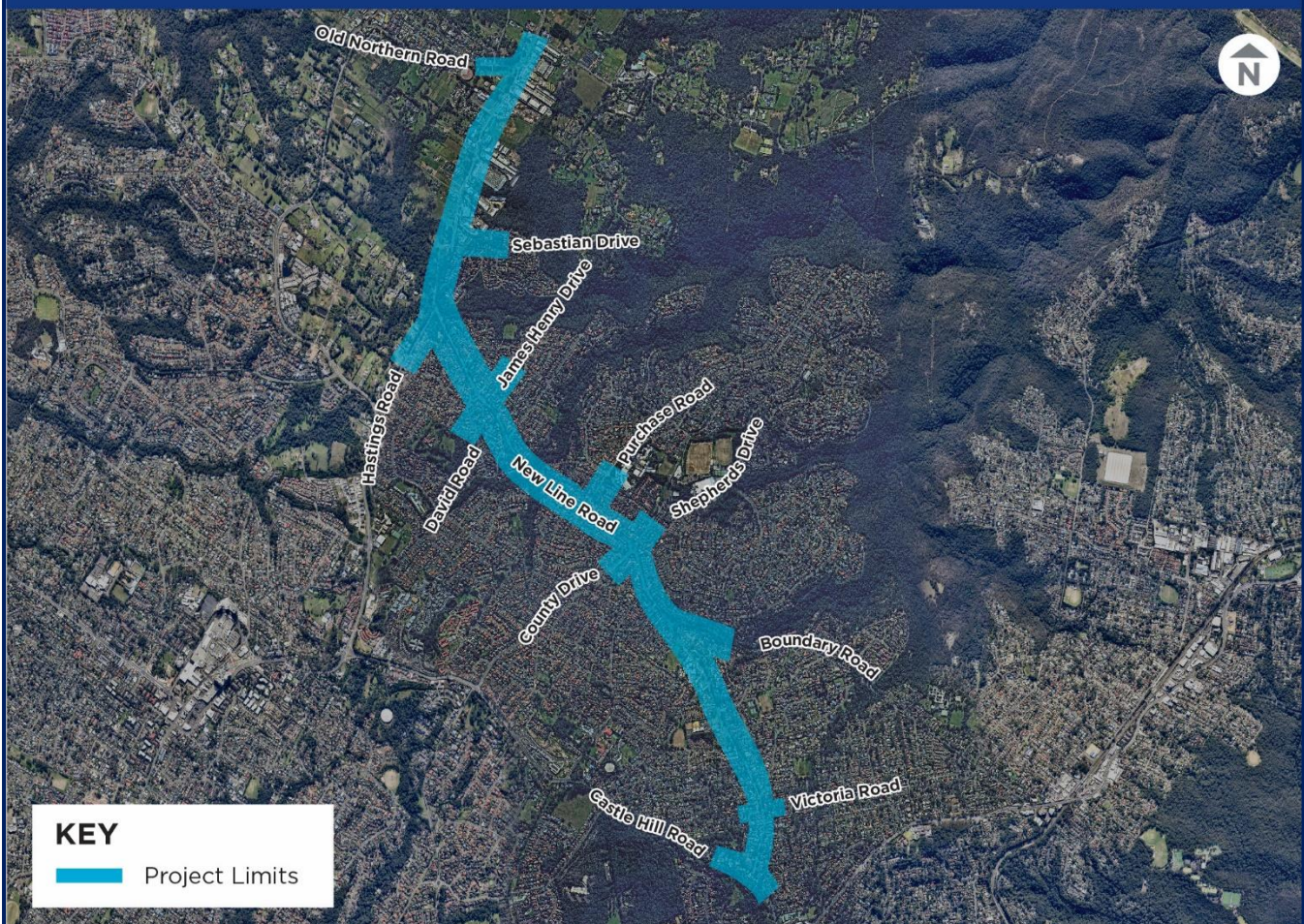
BUILDING OUR FUTURE



Investigations work on New Line Road, Dural

Transport for NSW | September 2020

Investigation work on New Line Road between Old Northern Road and Castle Hill Road



Transport for NSW will carry out investigations on New Line Road to help us plan future road improvements.

From **Wednesday, 30 September** we will start investigations on New Line Road between Old Northern Road and Castle Hill Road.

This work will include surveying to understand the condition of the existing road and utility investigations to identify the type and location of utilities, such as water, gas, electricity and telecommunications infrastructure.

Our work schedule

We will be on site for **45 night and 65 day** shifts, between **Wednesday 30 September** and **Tuesday 22 December**, weather permitting. We will not work on public holidays

Our day work hours will be between **7am** and **6pm** from Monday to Friday

Our night work hours will be between **9pm** to **5am** from **Sunday to Friday**

Contact us

If you have any questions please contact us on **1800 314 601** or at **newlineroad@transport.nsw.gov.au**

For more information on our projects, visit roads-maritime.transport.nsw.gov.au

Thank you for your patience during this important work.

How will the work affect you?

Some of our work will occur during the day, however, we will need to carry out some of this work at night to minimise the impact on traffic and to ensure the safety of our workers.

We will be working up to five nights a week. Our work will progress along the street and will not take place in the same location for more than three nights in a row.

Our work may be noisy at times but we will do everything we can to minimise its impact, including completing the noisier activities by midnight.

Traffic changes

There will be some temporary traffic changes during our work hours to ensure the work zone is safe. Lane closures may be in place and may affect travel times. Please keep to speed limits and follow the direction of traffic controllers and signs.

For the latest traffic updates, you can call 132 701, visit livetraffic.com or download the Live Traffic NSW App.



Translating and Interpreting Service

If you need an interpreter, please call the Translating and Interpreting Service (TIS National) on **131 450** and ask them to telephone Transport for NSW on 1800 314 601.

Arabic

إذا كنتم بحاجة إلى مترجم شفهي، من فضلكم اتصلوا بخدمة الترجمة الخطية والشفهية (TIS National) على الرقم **131 450** واطلبوا منهم الاتصال هاتفياً بـ:
Transport for NSW | 1800 314 601

Cantonese

如果你需要口譯員，請致電**131 450**，聯繫翻譯口譯服務署(TIS National)，請他們致電:
Transport for NSW | 1800 314 601

Mandarin

如果你需要口译员，请致电**131 450**，联系翻译口译服务署(TIS National)，请他们致电:
Transport for NSW | 1800 314 601

Greek

Αν χρειάζεστε διερμηνέα, παρακαλείστε να τηλεφωνήσετε στην Υπηρεσία Μεταφραστών και Διερμηνέων (TIS National) στο **131 450** και ζητήστε να τηλεφωνήσουν στο:
Transport for NSW | 1800 314 601

Italian

Se hai bisogno di un interprete, chiama il Servizio di traduzione e interpretariato (TIS National) al numero **131 450** e chiedi all'operatore di telefonare a:
Transport for NSW | 1800 314 601

Korean

통역사가 필요하시면 통번역서비스 (TIS National)에 **131 450**으로 연락하여 아래 기관으로 전화하도록 요청하십시오.
Transport for NSW | 1800 314 601

Vietnamese

Nếu cần thông ngôn viên, xin quý vị gọi cho Dịch vụ Thông Phiên dịch (TIS Toàn quốc) qua số **131 450** và yêu cầu họ gọi cho:
Transport for NSW | 1800 314 601