

MARCH 2013

Nelson Bay Road upgrade, Bobs Farm to Anna Bay (Stage 3)

The NSW Government is upgrading Nelson Bay Road from Bobs Farm to Anna Bay. The project is being funded by the NSW Government through the Hunter Infrastructure and Investment Fund.

The upgrade will involve reconstructing the existing carriageway and constructing a second carriageway between Cromarty Lane, Bobs Farm and Port Stephens Drive roundabout, Anna Bay.

Roads and Maritime Services (RMS) is in the final stages of acquiring property for the project. The design has been completed, the Review of Environmental Factors determined and tenders for construction were invited in January 2013.

Background

Nelson Bay Road is a State Road and is the main arterial link connecting Newcastle to Williamtown and the Tomaree Peninsula. It carries a large volume of local and tourist traffic visiting the Nelson Bay area and is the only route servicing the Tomaree Peninsula and the various townships between Newcastle and Nelson Bay.

This project is the final stage and longest section (4.2 kilometres in length) of the upgrade of Nelson Bay Road to dual carriageway from Bobs Farm to Anna Bay (total length 6.8 kilometres).

Benefits of the proposal:

- Improved safety for motorists, cyclists and pedestrians.
- Better bays for bus passengers.
- Reduced traffic delays.
- More reliable travel times for motorists using this section of Nelson Bay Road.

Features

The upgrade includes:

- Constructing a second carriageway between Cromarty Lane and Port Stephens Drive roundabout, Anna Bay.
- Reconstructing the existing carriageway.
- Ten upgraded bus bays.
- New u-turn facilities to provide safe access to properties along the route.
- Landscaped median to separate opposing traffic.
- Pedestrian refuges in the median adjacent to bus bays.
- Wider shoulders and improved intersections.



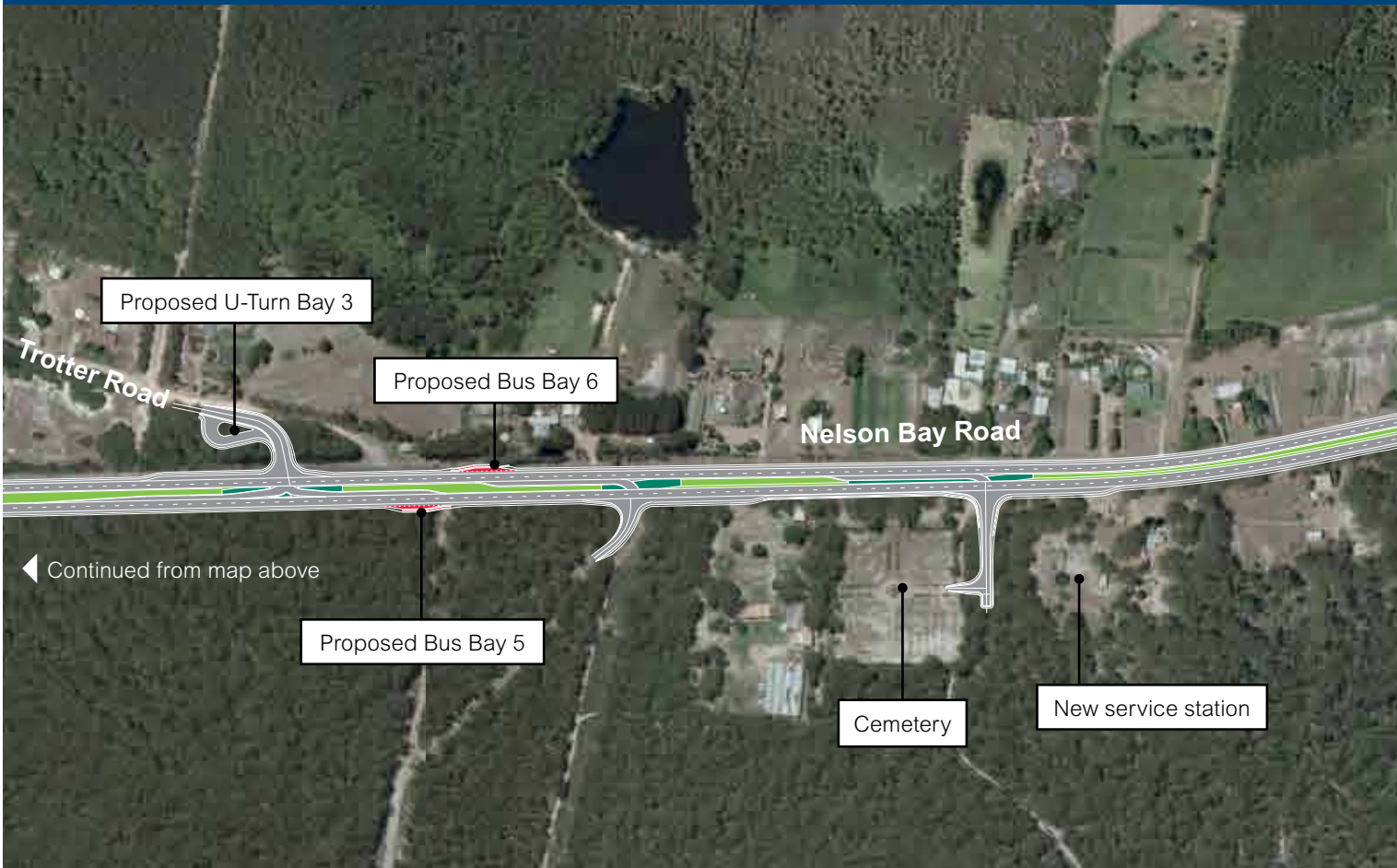
Nelson Bay Road – view west on approach to Port Stephens Drive roundabout

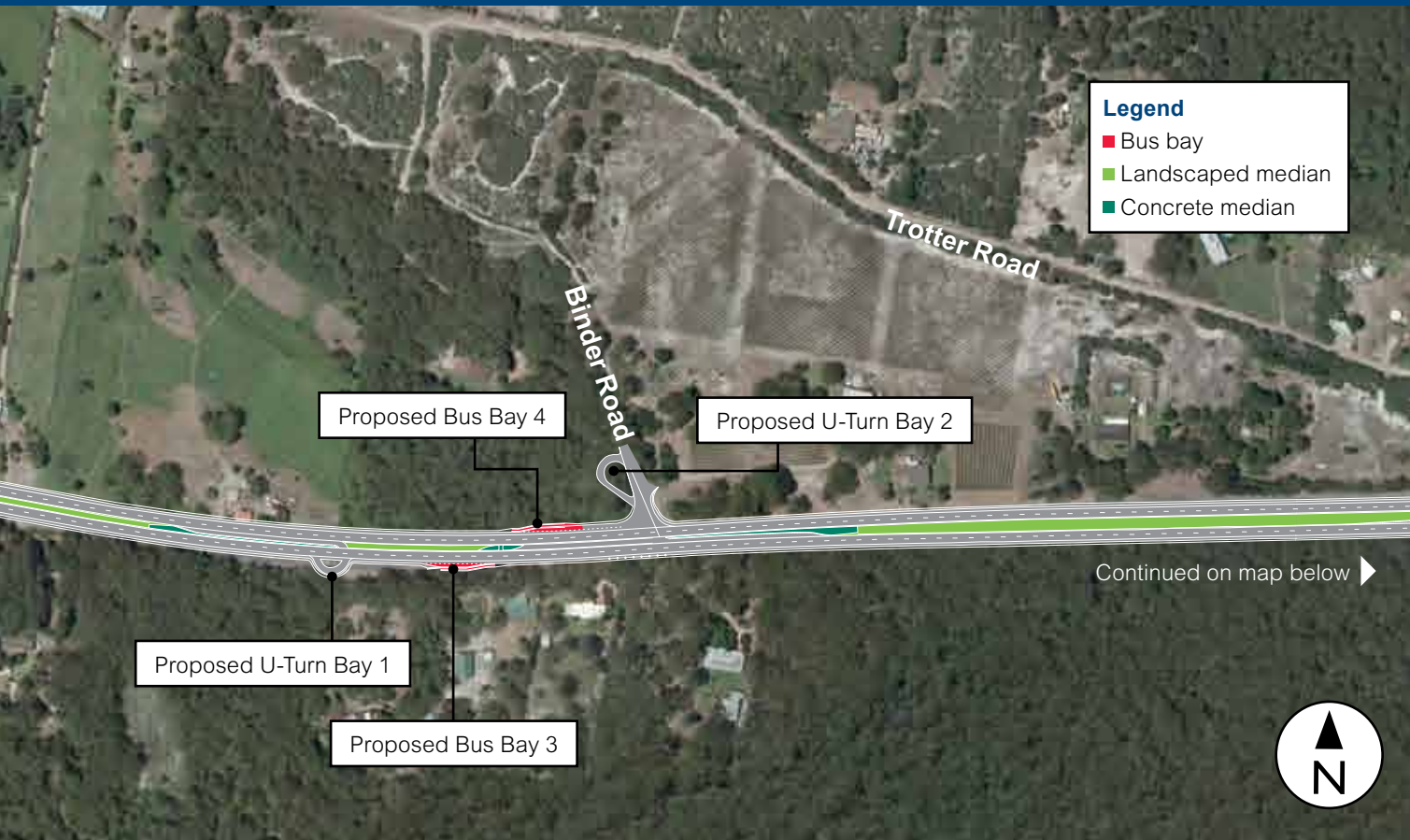
Nelson Bay Road from Cromarty Lane



Aerial photograph – Nelson Bay Road, December 2009

Nelson Bay Road to Port Stephens Drive, Anna Bay







Nelson Bay Road is being duplicated with safe access for adjoining properties and bus bays



For more information

Please contact the Project Manager, Ben Niland, on 02 4924 0639 (during office hours).

You can also write to:

Ben Niland
Roads and Maritime Services
Locked Bag 30 Newcastle NSW 2300

Or email: Ben.Niland@rms.nsw.gov.au

www.rms.nsw.gov.au | T 02 4924 0639 | F 02 4924 0342

March 2013
RMS/Pub.13.193

© Roads and Maritime Services

Privacy: Roads and Maritime Services (“RMS”) is subject to the *Privacy and Personal Information Protection Act 1998* (“PIIP Act”) which requires that we comply with the Information Privacy Principles set out in the PIIP Act.

All information in correspondence is collected for the sole purpose of assisting in the assessment of this proposal. The information received, including names and addresses of respondents, may be published in subsequent documents unless a clear indication is given in the correspondence that all or part of that information is not to be published. Otherwise RMS will only disclose your personal information, without your consent, if authorised by the law. Your personal information will be held by RMS at 59 Darby Street, Newcastle NSW 2300. You have the right to access and correct the information if you believe that it is incorrect.