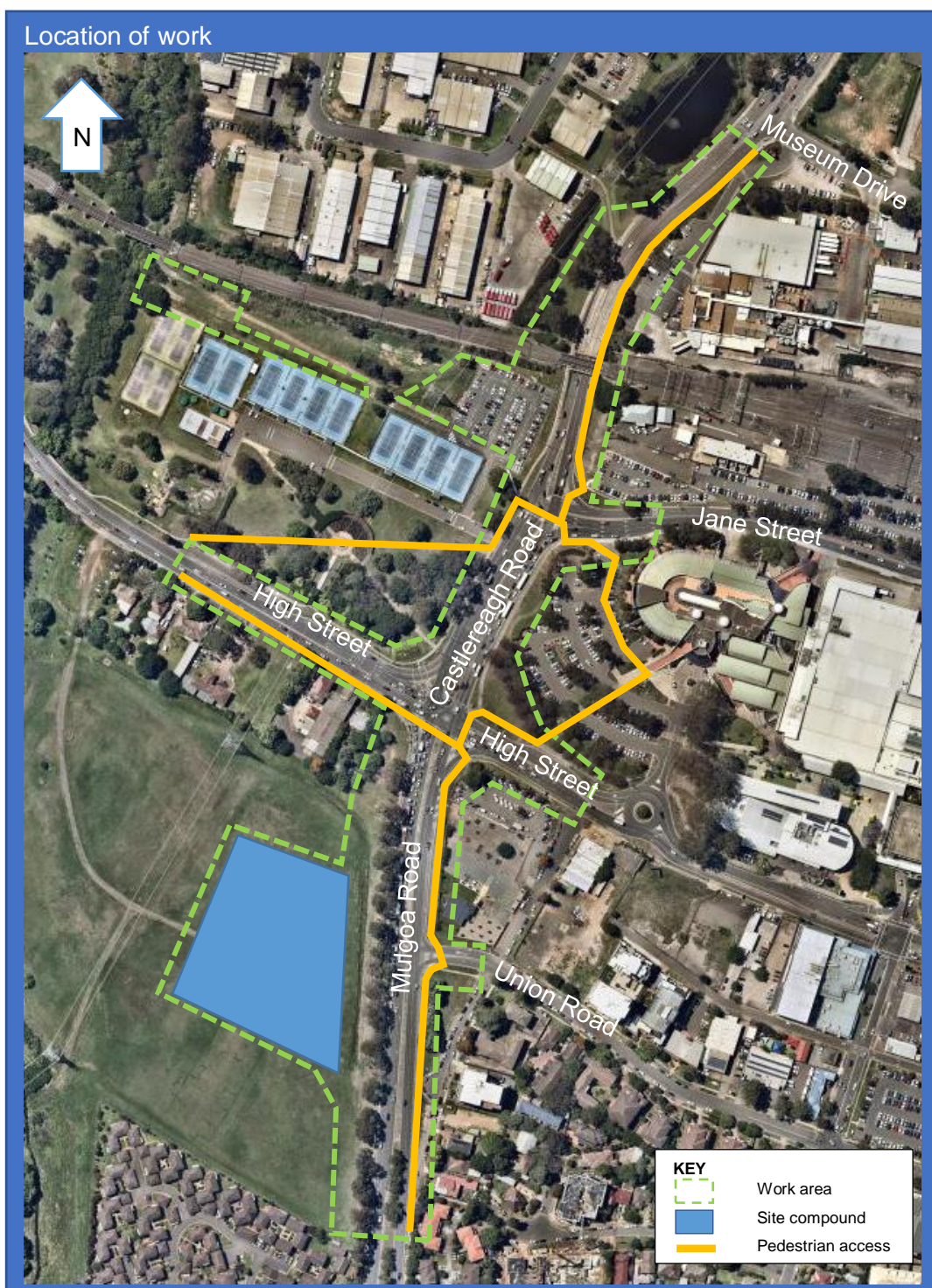




# Work continuing on Mulgoa and Castlereagh Roads, Penrith from Wednesday 1 April 2020

The Australian and NSW governments are jointly funding the upgrade of Mulgoa Road, Penrith from Union Road to Museum Drive.

Work is continuing on this project to improve the traffic flow along the Mulgoa Road and Castlereagh Road corridor, including the High Street and Jane Street intersections, with most of the electrical and telecommunication utilities infrastructure now installed.





## Our work schedule

Work will be carried out between **Wednesday 1 April and Sunday 31 May 2020, weather permitting**. There will be no work during the Easter period and on Anzac Day.

Our work hours are Monday to Friday between **7am and 6pm**, Saturdays **7am to 5pm** and some nights from Monday to Sunday between **6pm and 7am**.

## Contact

If you have any questions, please contact our delivery partner McConnell Dowell on 1800 951 118 or email [mulgoaroad.penrith@mcdgroup.com](mailto:mulgoaroad.penrith@mcdgroup.com)

For more information on our projects visit [rms.nsw.gov.au/projects/sydney-west/index.html](https://rms.nsw.gov.au/projects/sydney-west/index.html)

The work over this period will include the following activities:

- deliveries of equipment and materials
- completing work on the new bridge including the installation of retaining walls and fascia panels
- investigating, installing and relocating utilities
- constructing new drainage and a stormwater pump station
- constructing new road surfaces including earthwork
- working in the rail corridor.

### How will the work affect you?

- There will be temporary traffic lane closures on Mulgoa Road, Castlereagh Road, High Street and Jane Street on **weekdays** and **Sundays** between **6pm and 7am**.
- At times we may need to control the flow of traffic on the western side of High Street on **weekdays** between **10am and 3pm** and **Saturdays** between **10am and 1pm**.
- Pedestrian and cyclist detours will be in place on Mulgoa Road, Castlereagh Road, High Street and Jane Street for their safety.

At times our work may be noisy. We will minimise impacts by aiming to complete noisier tasks by **11pm** and staging work in different locations.

### Traffic changes

During lane closures there will be traffic control and a reduced speed limit of 40 kilometres per hour for the safety of workers, motorists, cyclists and pedestrians. For your safety please follow traffic signs.

Please follow direction of traffic controllers, speed and detour signs. All traffic changes will be temporary during our standard work hours. For the latest traffic updates call 132 701, or visit [livetraffic.com.au](http://livetraffic.com.au)



131 450

If you need help understanding this information, please contact the Translating and Interpreting Service on 131 450 and ask them to call us on 1800 951 118.