

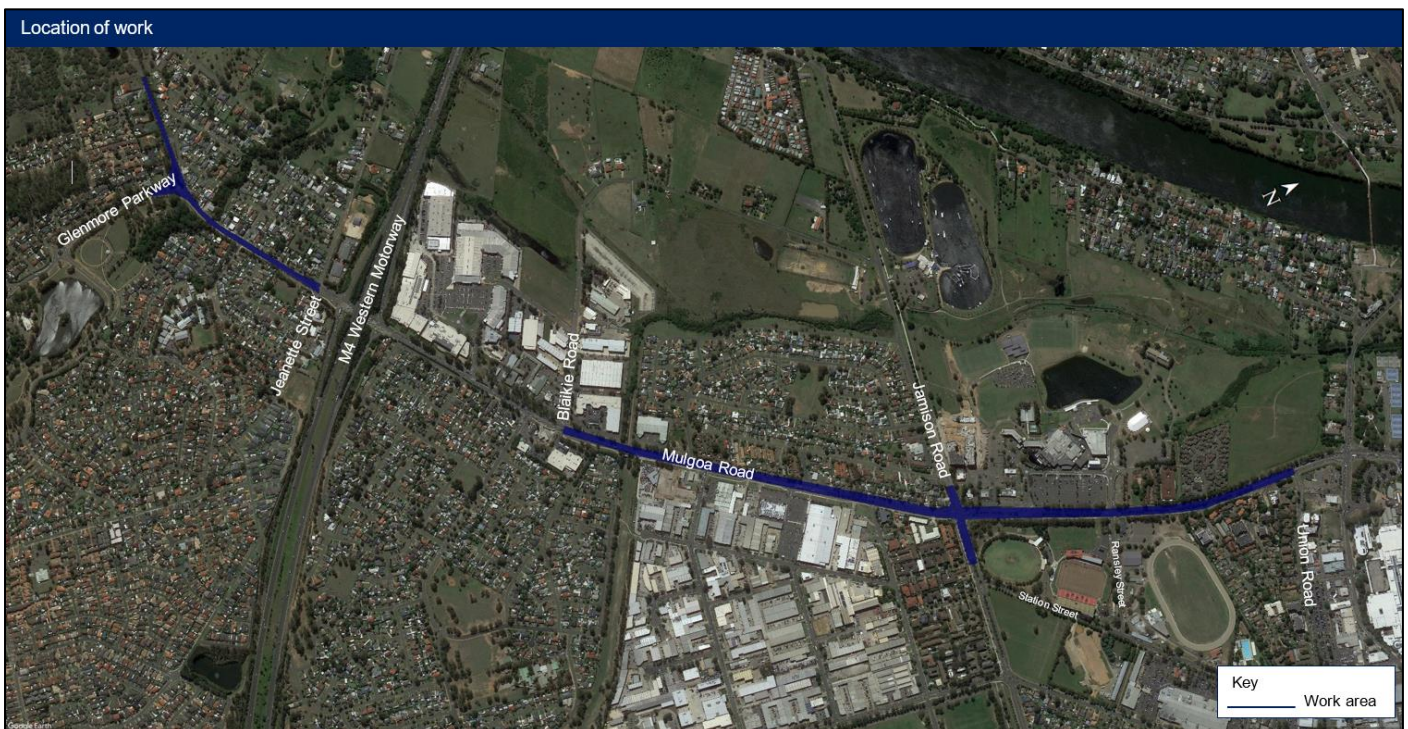
October 2020

Day and Night investigation work on Mulgoa Road, between Glenmore Parkway to Jeanette Street and Blaikie Road to Union Road from Monday 19 October 2020

The NSW Government is planning to widen and upgrade Mulgoa Road between Glenmore Parkway to Jeanette Street and Blaikie Road to Union Road to support current and future traffic demands and expected growth in the area.

Transport for NSW will carry out investigation work along the Mulgoa Road corridor, between Glenmore Parkway to Jeanette Street and Blaikie Road to Union Road. Our work will include surveys, geotechnical investigations, and potholing to establish ground conditions.

These studies will inform the design of the future road upgrades of Mulgoa Road.



Our work schedule

Work will be carried out for approximately **35** night shifts and **45** day shifts between Monday 19 October 2020 to Thursday 24 December 2020, weather permitting. We will make every effort to complete our work within the scheduled times.

Work during the day will occur on weekdays between **7am** and **6pm** and on Saturdays between **8am** and **1pm**. Work at night is expected to occur on some weekdays and weekend nights between **6pm** and **6am**.

Contact

If you have any questions or want to register for updates on this project, please contact the project team on 1800 733 084 or email mulgoaroadupgrade@transport.nsw.gov.au

For more information, visit www.rms.nsw.gov.au/mulgoaroadcastlereaghroad.

The work over this period will include the following activities:

- low impact topographic, environmental and heritage surveys
- drilling boreholes to gather information about underground rock and soil conditions
- potholing to locate subsurface utilities
- excavation of test pits.

The plant and machinery used will be an excavator, truck mounted drill rig, vacuum excavation truck and support vehicles.

How will the work affect you?

There may be some noise associated with this work, but every effort will be made to minimise the impact on residents by completing the noisier work earlier in the night and turning off machinery when not in use. We will maintain access to properties and businesses. If we need to access your property, we will contact you in advance to discuss access arrangements.

Traffic changes

There may be temporary traffic changes during our work hours to ensure the work zone is safe. Lane closures will be in place and may affect travel times. Please keep to speed limits and follow signs and traffic controllers' directions. For the latest traffic updates, you can call 132 701, visit livetraffic.com or download the Live Traffic NSW App.



If you need help understanding this information, please contact the Translating and Interpreting Service on 131 450 and ask them to call us on 1800 733 084.