



Australian Government

BUILDING OUR FUTURE



April 2018

Night and day work - Mulgoa Road from April to June 2018

The Australian and NSW governments are planning to widen and upgrade Mulgoa Road / Castlereagh Road to support current and future traffic demands and expected growth in the area. This includes \$100 million to fast-track the first stage of the corridor upgrade between Jeanette Street, Regentville and Blaikie Road, Jamisontown.

Roads and Maritime Services will carry out geotechnical investigations in several locations along Mulgoa Road and some surrounding local roads over the next few months. These investigations will help inform the design and environmental assessment for the first stage of the Mulgoa Road / Castlereagh Road corridor upgrade.

The geotechnical investigation work includes taking samples from the road and surrounding areas and locating utilities by digging boreholes and test trenches.

The map on the back of this page shows the location of work.

To minimise the impact on road users, most of the work will take place on weeknights and Sunday nights between 9pm and 6am, from April to June 2018. If you are located near a night work location we will contact you the day before the work takes place. Day work will be between 7am and 6pm Monday to Friday and 8am and 1pm Saturdays.

How will the work affect you?

There may be some activity in the area while contractors are conducting investigations. The work may be noisy and we will try and reduce the impact on you by ensuring the noisy work finishes by 10pm. Our worksites need to be lit for the safety of workers and we will try and direct the light away from homes as much as possible.

Traffic changes

We may need to work on the road with some temporary lane closures.

Please keep to speed limits and, if traffic controllers are in place, please follow their directions and signs. For the latest traffic updates, you can call 132 701, visit livetraffic.com or download the Live Traffic NSW App.

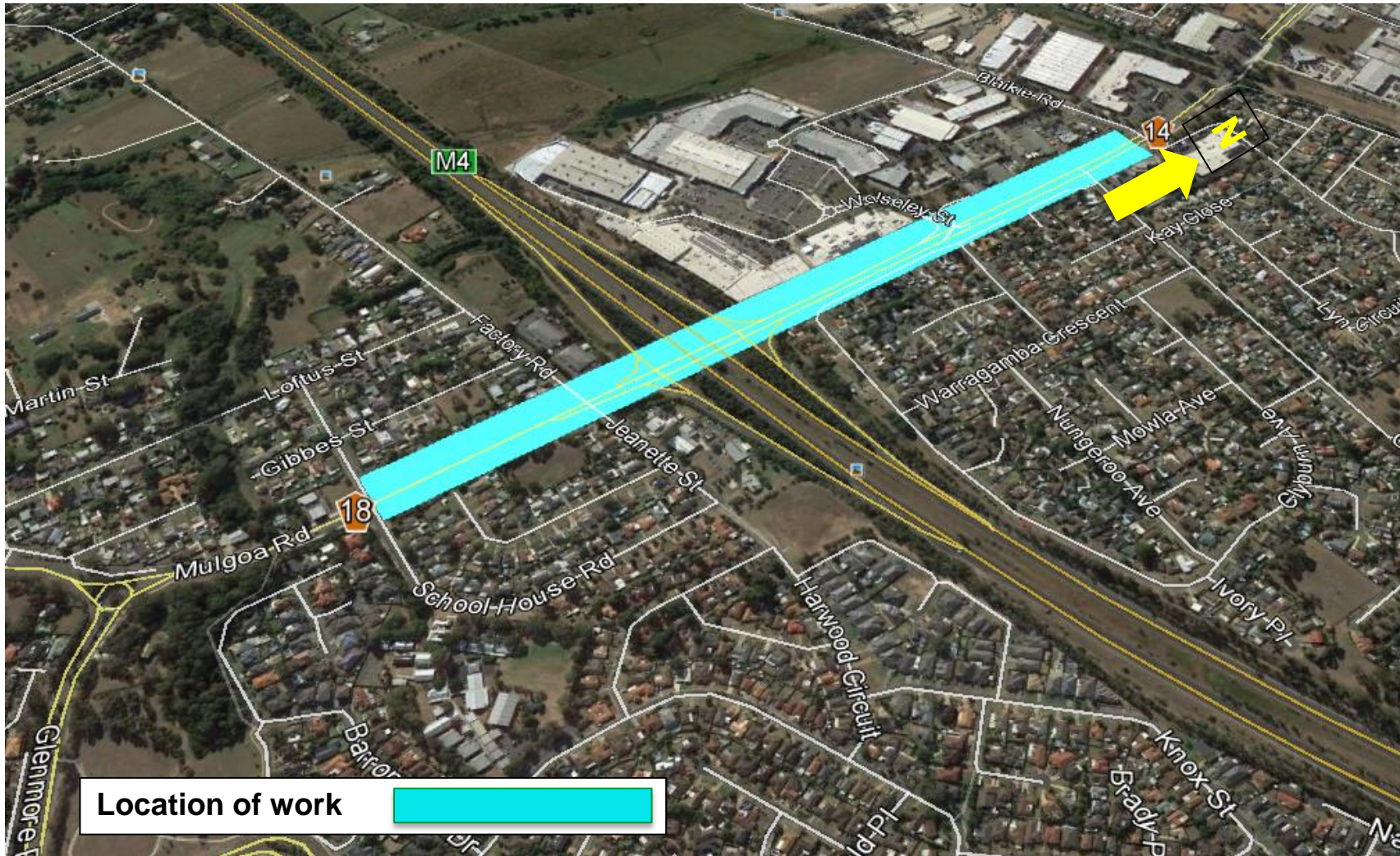
Contact

If you have any questions, please contact the project team on 1800 733 084 or mulgoaroadupgrade@rms.nsw.gov.au

For more information on the Mulgoa Road/Castlereagh Road upgrade, visit www.rms.nsw.gov.au/MulgoaRoadCastlereaghRoad.

Thank you for your patience during this important work.

Mulgoa Road / Castlereagh Road geotechnical investigation work



If you need help understanding this information, please contact the Translating and Interpreting Service on 131 450 and ask them to call us on 1800 733 084.