



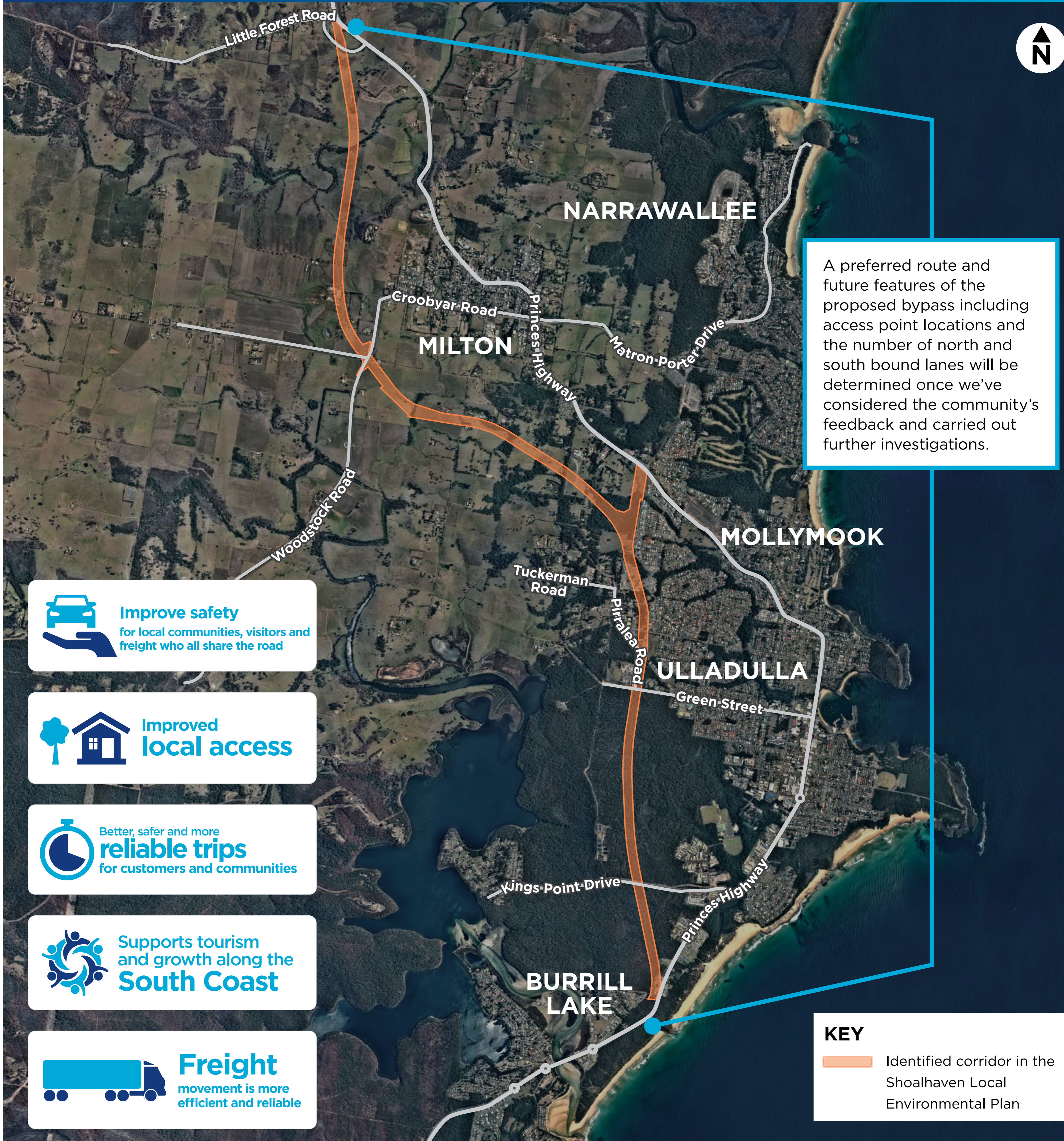
Australian Government

**BUILDING OUR FUTURE**



# Milton Ulladulla bypass Princes Highway upgrade

Identified corridor in the Shoalhaven Local Environmental Plan



A preferred route and future features of the proposed bypass including access point locations and the number of north and south bound lanes will be determined once we've considered the community's feedback and carried out further investigations.


 **Improve safety**  
for local communities, visitors and freight who all share the road

 **Improved local access**

 **Better, safer and more reliable trips**  
for customers and communities

 **Supports tourism and growth along the South Coast**

 **Freight**  
movement is more efficient and reliable

**KEY**  
 Identified corridor in the Shoalhaven Local Environmental Plan