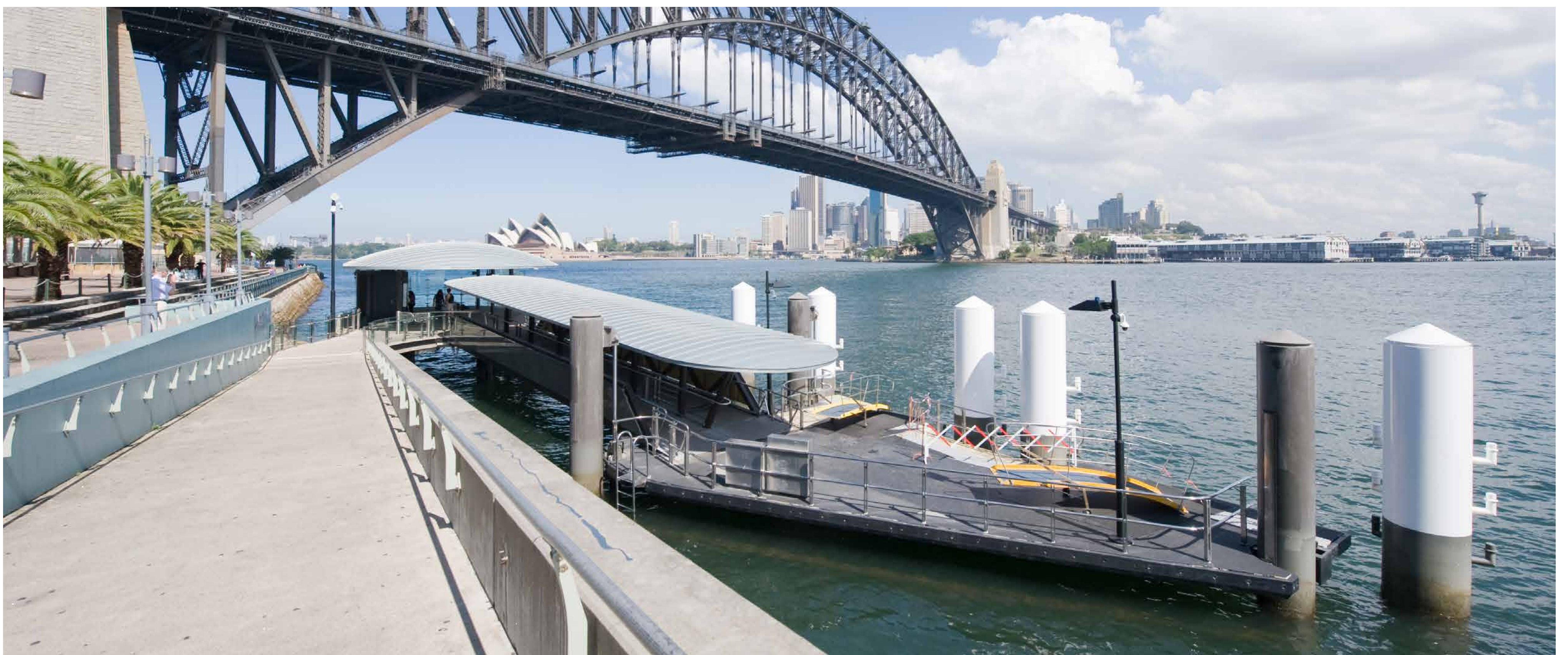


Milsons Point Wharf expansion

OVERVIEW

December 2016

The NSW Government is expanding Milsons Point Wharf as part of the Transport Access Program, an initiative to deliver modern, safe and accessible transport infrastructure.



The existing Milsons Point Wharf

The upgrade would increase the capacity of Milsons Point wharf by enabling two ferries to berth at the same time, meaning more frequent, reliable services for ferry customers and improved boarding and disembarking time during peak periods.

Following consultation with the community the Review of Environmental Factors for the project has been finalised and displayed for community feedback.

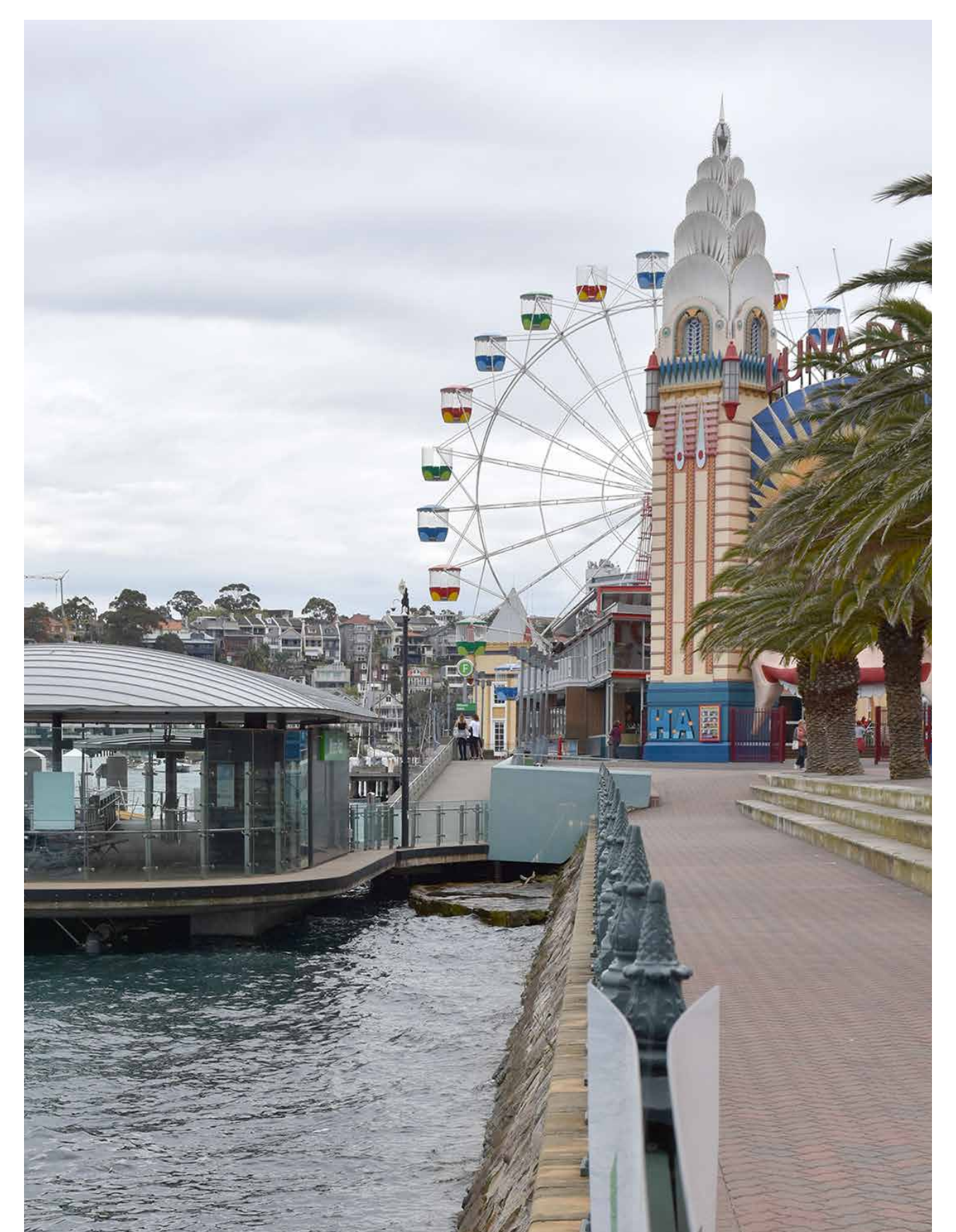
Construction is expected to start in the first half of 2017 following careful consideration of all feedback received and approval of final plans.

The proposed concept would retain most of the existing wharf, upgraded in 2010, with an increased waiting area and add a second berthing face. Access to the wharf would be upgraded to improve accessibility.

The expanded wharf would provide:

- ▶ Capacity for additional ferry services
- ▶ Improved seating and waiting areas
- ▶ Quick and efficient ferry boarding and disembarking
- ▶ Improved access for mobility impaired customers and customers with prams
- ▶ Improved pedestrian access from the foreshore to the wharf
- ▶ Effective wayfinding signage and lighting.

Transport for NSW is improving Sydney's ferry services for customers. New and upgraded wharves and interchanges are being delivered as part of the NSW Transport Access Program. Recently upgraded facilities have included Balmain East, Pyrmont, Meadowbank and McMahon's Point.



The existing wharf viewed from the land