



Australian Government

BUILDING OUR FUTURE



March 2017

Start of major construction on the M1 Pacific Motorway upgrade, between Tuggerah and Doyalson interchanges from Wednesday 29 March 2017

The Australian and NSW governments are funding the upgrade of the M1 Pacific Motorway between the Tuggerah and Doyalson interchanges to improve traffic flow and safety.

The Tuggerah to Doyalson M1 Pacific Motorway widening forms part of the M1 Pacific Motorway Upgrade, providing safer and more reliable trips for freight, people and businesses.

Roads and Maritime Services last month awarded a contract to CPB Contractors Pty Limited to rebuild and widen the motorway and upgrade the Warnervale and Doyalson interchanges.

The first stage of work will involve geotechnical investigations and tree clearing on the M1 Pacific Motorway in both directions, at St Johns Road and Sparks Road. We have included photos to show the location of the work.

We will be working southbound on the motorway between **7pm and 4am Monday to Friday** and between **9pm and 4am on Sunday**. We will be working northbound on the motorway between **8pm and 5am from Monday to Thursday** and **between 10pm and 6am on Friday**. The work is expected to be completed in **eight shifts**, weather permitting. We will let you know in advance if we need to work outside these times.

How will the work affect you?

The work may be noisy. We will make every effort to minimise noise by arranging the work in stages at different locations.

Traffic changes

There will be some temporary traffic changes to make sure the work zone is safe.

Temporary lane closures and a reduced speed limit will be in place during work hours and may affect travel times. Please keep to speed limits and follow the direction of traffic controllers and signs. For the latest traffic updates, you can call 132 701, visit livetraffic.com or download the Live Traffic NSW App for iPhone, iPad and Android.

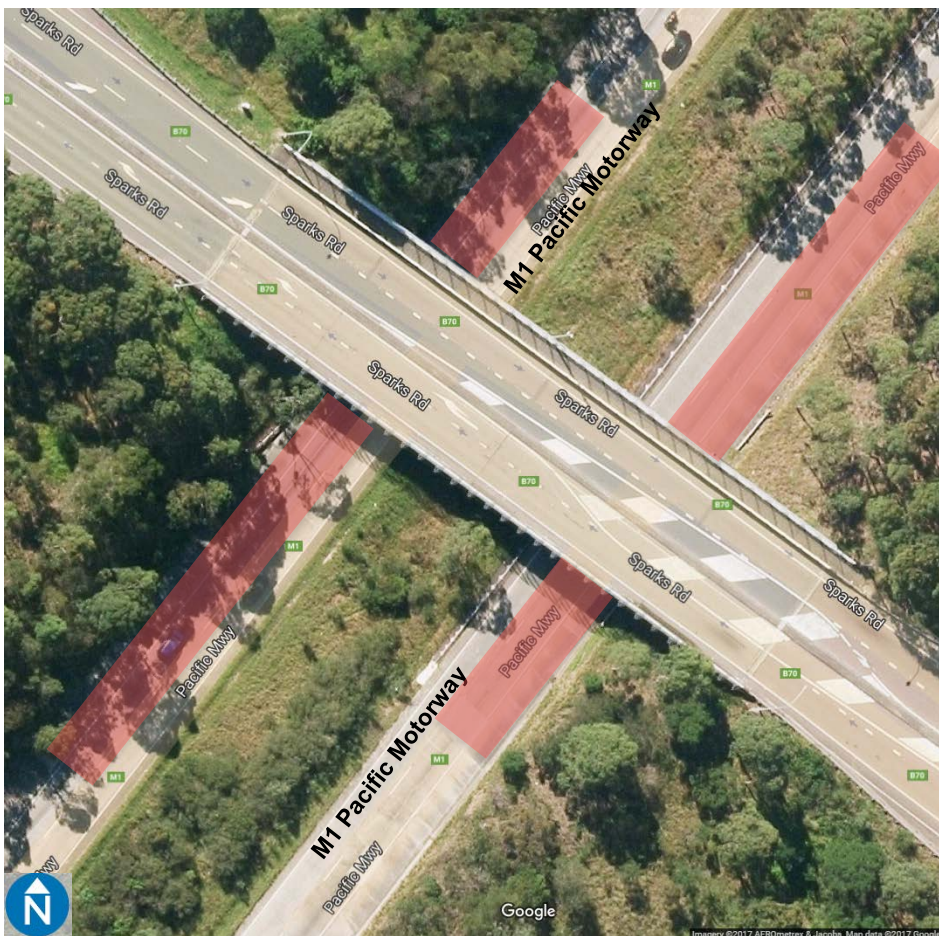
Contact

If you have any questions, please contact our Project Manager, Brett Hoad, on 1800 745 286 or brett.hoad@rms.nsw.gov.au. For more information on our projects, visit rms.nsw.gov.au. Thank you for your patience during this important work.

M1 Pacific Motorway upgrade, between Tuggerah and Doyalson interchanges



Work to be carried out on M1 Pacific Motorway at St Johns Road, Jiliby



Work to be carried out on M1 Pacific Motorway at Sparks Road, Warnervale