

Night work continuing on Memorial Avenue at Kellyville from 1 February

The NSW Government is upgrading Memorial Avenue to ease congestion, improve travel times and meet the future transport needs for Sydney's growing north west.

What are we doing?

We will be working at night in February for:

- Utility services relocation and installation
- Installation of stormwater
- Service investigation

The safety and wellbeing of our workforce and the wider community is our highest priority. This work is in line with the Public Health Order and a COVID-Safe plan is in place.

Our work schedule

Night work will take place between **1 February and 28 February** in the following areas, weather and COVID-19 restrictions permitting.

Activity	Length of time
Utility services relocation on Memorial Avenue near the intersection of Arnold Avenue (West)	2 x 2 nights
Utility services relocation on Memorial Avenue near Hector Court	1 x 2 nights
Utility services relocation on Memorial Avenue near Stone Mason Drive	2 x 2 nights
Utility services relocation on the eastern side of Old Windsor Road adjacent to the T-Way heading south from Samantha Riley Drive	2 x 2 nights
Utility services relocation (traffic signals) on Old Windsor Road at the intersection of Sunnyholt Road	3 x 2 nights
Utility services relocation at the intersection of Windsor Road and Memorial Avenue	1 x 2 nights
Utility services relocation on Windsor Road between Memorial Avenue and Presidents Road	2 x 2 nights
Utility service relocation across the T-Way on the southern side of Memorial Avenue	2 x 2 nights
Utility service relocation on Memorial Avenue to the east of the pedestrian bridge	1 x 3 nights
Utility service connections on Memorial Avenue at three locations between Strangers Creek and Windsor Road	1 x 2 nights
Road surfacing work on the west bound lanes beneath the Sydney Metro viaduct	1 x 2 nights
Installation of stormwater at the intersection of Old Windsor Road and Sunnyholt Road	1 x 3 nights
Services investigation work – no more than 2 nights at one location	

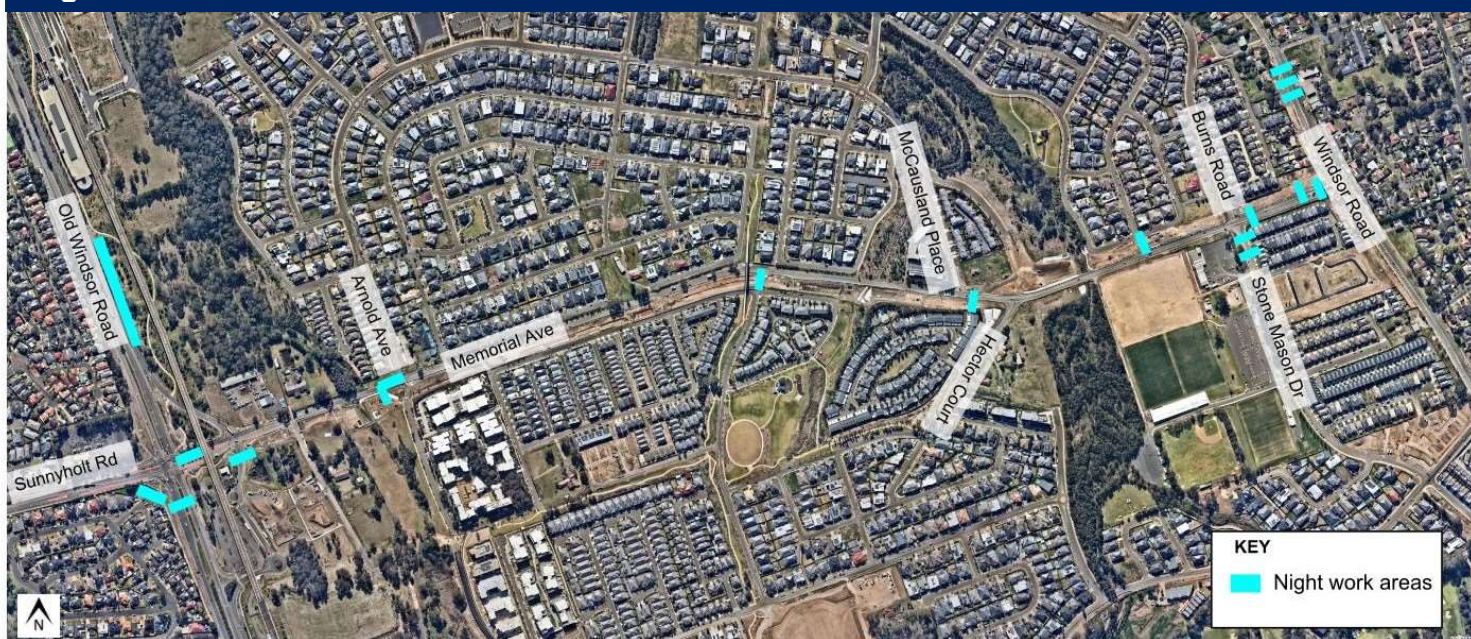
Our night work hours are from **8pm to 5am Monday to Friday**. However, our work crews may be on site from 6pm to prepare for the shift and set up safety equipment.

How will the work affect you?

We will be completing some work at night to reduce traffic disruption and any risks to the workers and road users during the day.

The night work will involve some use of noisy machinery. We will make every effort to lessen the disturbance where possible, completing noisier work earlier in the evening and turning off vehicles when not in use. Directly affected residents will be advised about the expected night work near their property and the measures being taken to lessen the disturbance during the work.

Night work locations at Memorial Avenue



Traffic changes

There will be some temporary traffic changes to make the work zone safe. Partial lane closures and a reduced 40km/h speed limit will be in place. Travel times may be affected by up to five minutes. Please keep to speed limits and follow the direction of traffic controllers and signs. For the latest traffic updates call 132 701, visit livetraffic.com or download the Live Traffic NSW App.

Contact us

If you have any questions or would like more information on the Memorial Avenue Upgrade project, please contact our project team:



1800 784 847



memorial.avenue@daracon.com.au



<https://roads-waterways.transport.nsw.gov.au/projects>



If you need help understanding this information, please contact the Translating and Interpreting Service on **131 450** and ask them to call us on **1800 784 847**.