

Proposed intersection improvements at Hoxton Park Road and Flowerdale Road, Liverpool

Community Consultation Summary

September 2017



THIS PAGE LEFT INTENTIONALLY BLANK

Executive summary

This report provides a summary of Roads and Maritime Services consultation with the community and stakeholders on proposed intersection improvements at Hoxton Park Road and Flowerdale Road, Liverpool. The proposal will improve traffic flow, reduce congestion and improve safety for road users and pedestrians.

The NSW Government is funding this proposal as part of its \$300 million Pinch Point Program which aims to reduce congestion and improve travel times on Sydney's busiest corridors.

The work includes:

- providing a staged pedestrian crossing on the western side of the Hoxton Park Road and Flowerdale Road intersection
- installing pedestrian fencing to suit the reconfigured pedestrian crossing.

We consulted with the community in August and September and did not receive any objections to the proposal.

The decision

We will continue to keep the community and stakeholders updated as the proposal progresses.

Contents

| | |
|-------------------------------------|----|
| Executive summary..... | 3 |
| The decision | 3 |
| 1. Introduction..... | 5 |
| 1.1. Background | 5 |
| 1.2. The proposal..... | 5 |
| 2. Consultation approach..... | 7 |
| 2.1 Consultation objectives | 7 |
| 2.2 How consultation was done | 7 |
| 3. Consultation summary | 8 |
| 4. Recommendations..... | 8 |
| 5. Next steps..... | 8 |
| Appendix A – Have your say..... | 9 |
| Appendix B –Distribution area..... | 11 |

1. Introduction

1.1. Background

A study of traffic conditions along Hoxton Park Road corridor identified a problem with congestion at the intersection of Hoxton Park Road and Flowerdale Road, Liverpool during both AM and PM peak times.

The proposal is expected to increase capacity at the intersection, minimise congestion and improve road safety for pedestrians and road users.

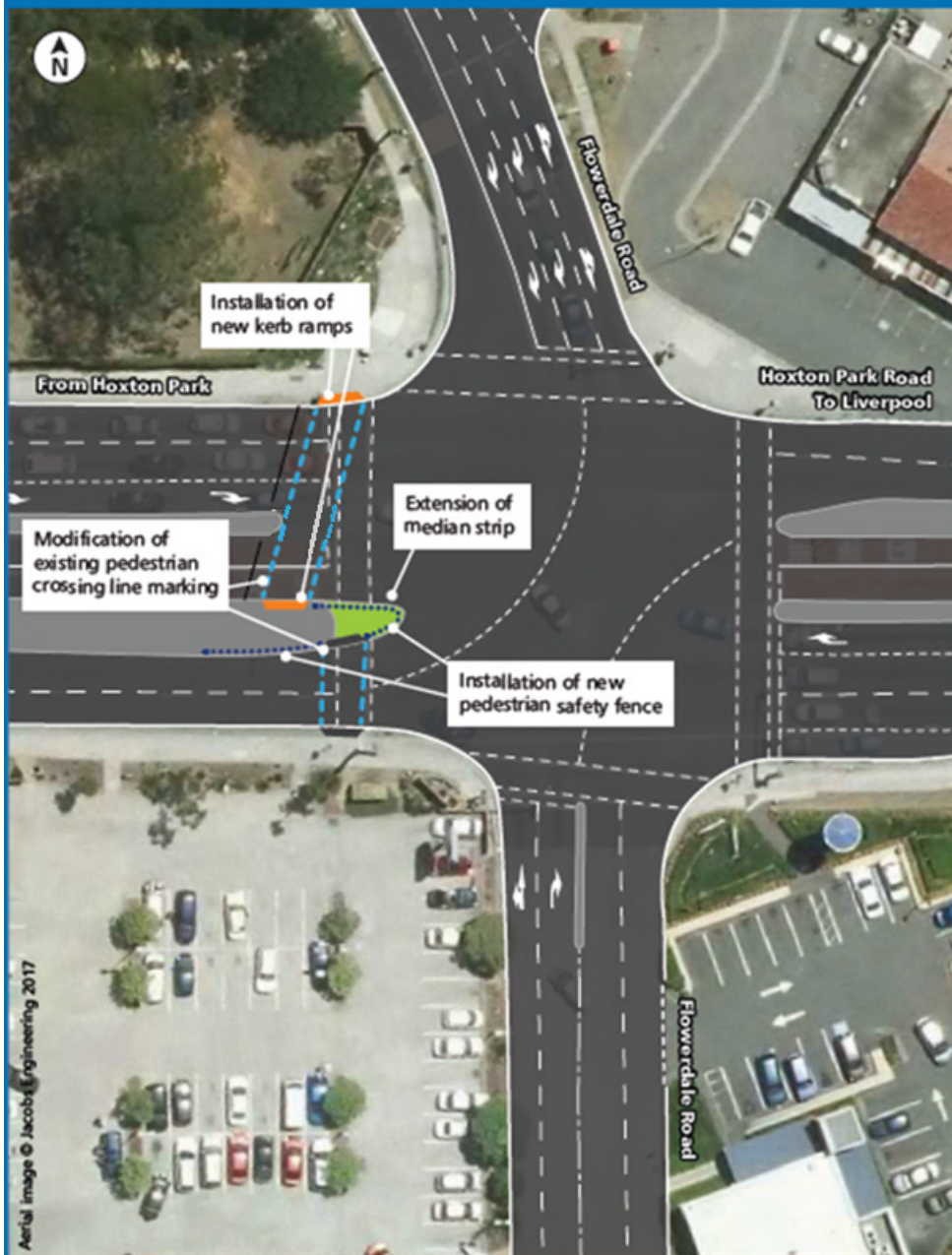
1.2. The proposal

The NSW Government is funding this proposal as part of its \$300 million Pinch Points which aims to reduce delays, manage congestion and improve travel times on Sydney's major roads, particularly during weekday peak periods.

The proposal includes:

- providing a staged pedestrian crossing on the western side of the Hoxton Park Road and Flowerdale Road intersection
- installing pedestrian fencing to suit the reconfigured pedestrian crossing.

Proposed intersection upgrade at Hoxton Park Road and Flowerdale Road, Liverpool



2. Consultation approach

2.1 Consultation objectives

We consulted with the community in August and September 2017 to:

- seek comment, feedback, ideas and suggestions for us to consider when developing the proposal
- build a database of interested and concerned community members with whom we could continue to engage during the development of this proposal.

2.2 How consultation was done

The community and stakeholders were encouraged to provide feedback via mail, email or phone between Wednesday 30 August and Tuesday, 12 September 2017.

We distributed 207 letters to local residents and businesses inviting feedback on the proposal (Appendix A). Copies were provided to Council, the Local Member, emergency services, schools, hospitals and community groups in the local area.

3. Consultation summary

We consulted with the community in August and September and did not receive any objections to the proposal.

4. Recommendations

Roads and Maritime would like to thank everyone who took the time to consider our proposal.

5. Next steps

Roads and Maritime will notify the community and stakeholders seven days before the start of work and will continue to keep them informed as this project progresses.

Appendix A – Have your say

August 2017

Have Your Say – Proposed intersection improvements at Hoxton Park Road and Flowerdale Road, Liverpool

The NSW Government is funding this proposal as part of its \$300 million Urban Roads Pinch Point Program, which aims to reduce congestion and improve travel times on Sydney’s busiest corridors.

Roads and Maritime Services is seeking feedback by **Tuesday 12 September** on a proposal to make improvements at the intersection of Hoxton Park Road and Flowerdale Road, Liverpool.

The proposed improvements include:

- providing a staged pedestrian crossing on the western side of the Hoxton Park Road and Flowerdale Road intersection
- installing pedestrian fencing to suit the reconfigured pedestrian crossing.

Key benefits

The proposal will:

- improve pedestrian safety by providing a raised and fenced pedestrian island
- improve the efficiency of the intersection by providing more green time to Hoxton Park Road and the transit way.

Have your say

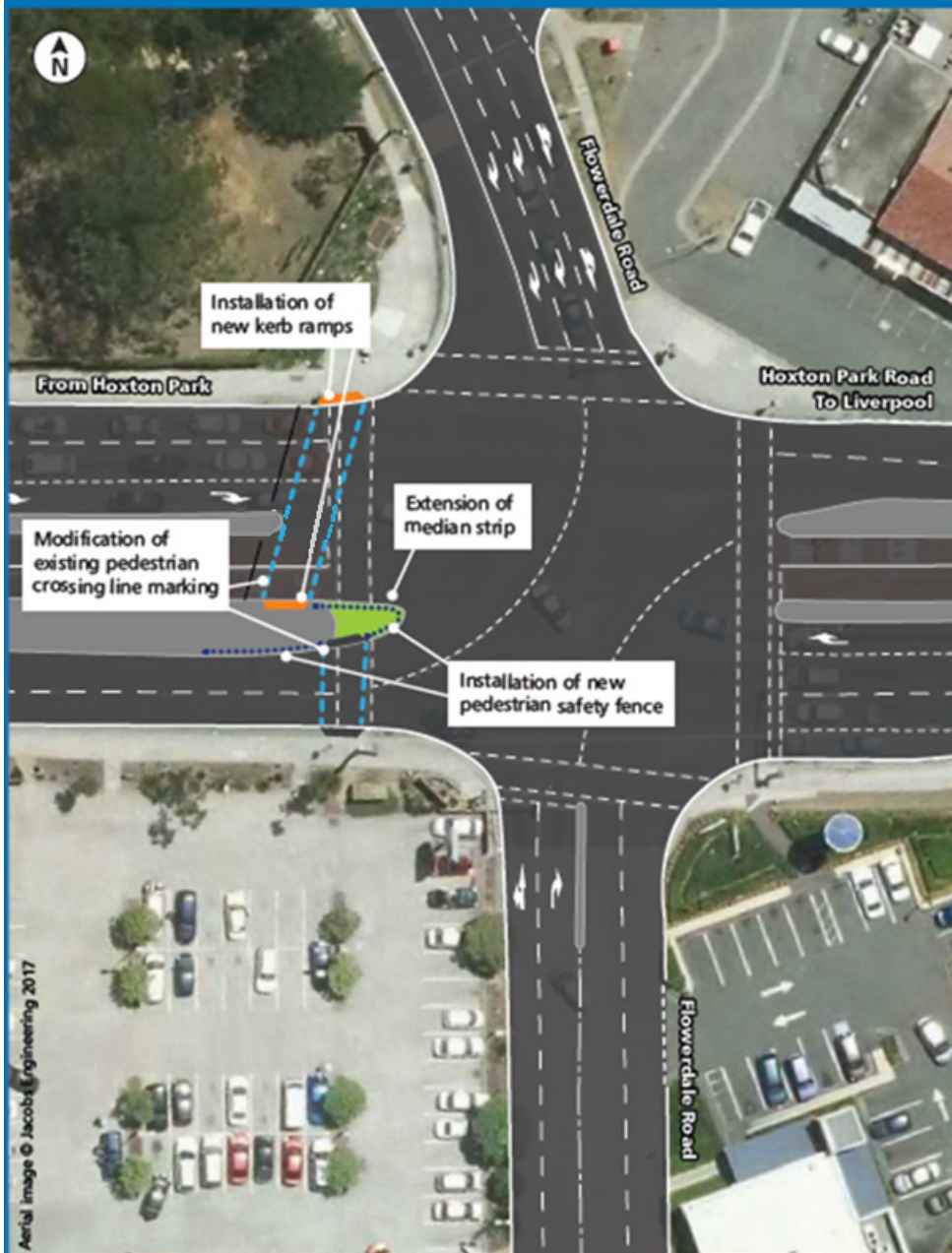
Roads and Maritime welcomes your comments on the proposed improvements by **Tuesday 12 September**. You can provide your comments by:

- **Calling** our Project Engineer, Trung Huynh, on 1800 572 004 during business hours
- **Emailing** pinchpoints@rms.nsw.gov.au
- **Writing** to Pinch Points Program Project Team, Roads and Maritime Services, PO Box 973, Parramatta, NSW, 2124.

Next Steps

We will carefully consider all feedback received before deciding to proceed with this proposal. A community consultation report will be prepared, summarising the matters raised and our responses. This will be made available on our website. We will keep you updated as the proposal progresses.

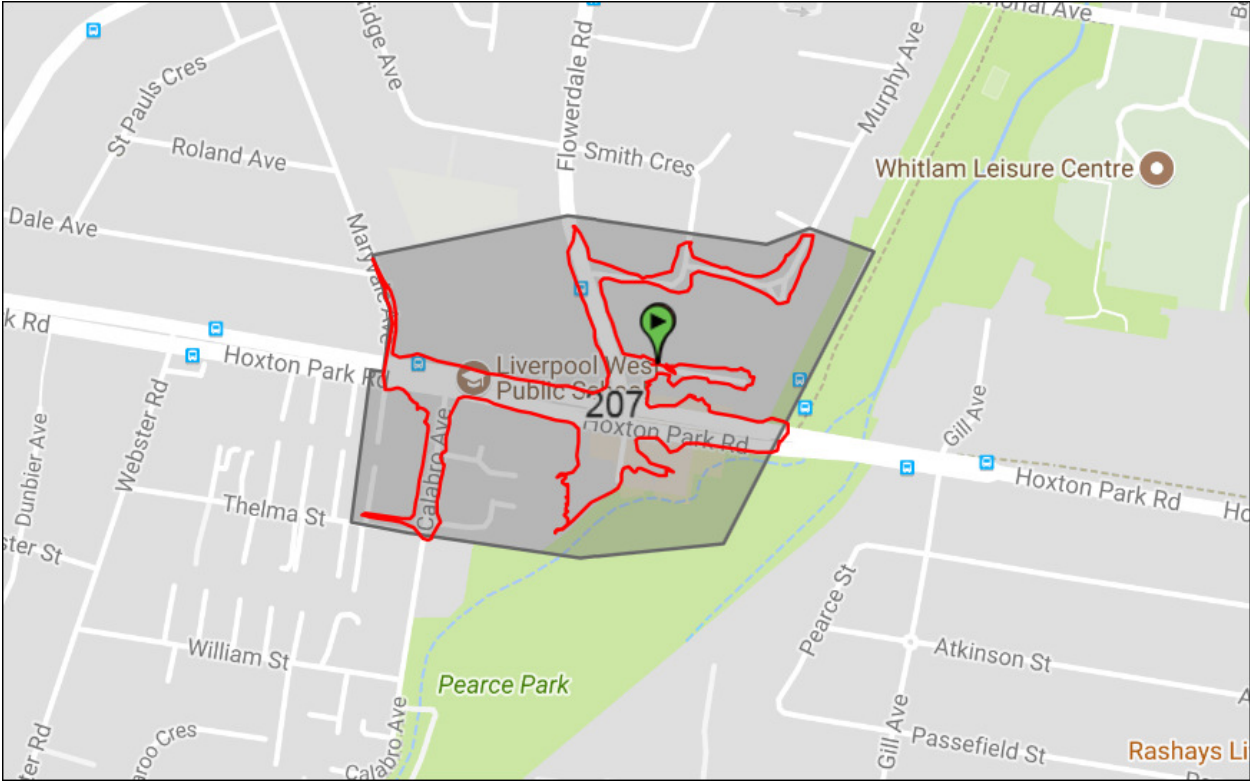
Proposed intersection upgrade at Hoxton Park Road and Flowerdale Road, Liverpool



131 450

If you need help understanding this information, please contact the Translating and Interpreting Service on 131 450 and ask them to call us on 1800 572 004

Appendix B –Distribution area





rms.nsw.gov.au



13 22 13



Customer feedback
Roads and Maritime
Locked Bag 928,
North Sydney NSW 2059

October 2017
RMS17.496
ISBN: 978-1-925421-96-5