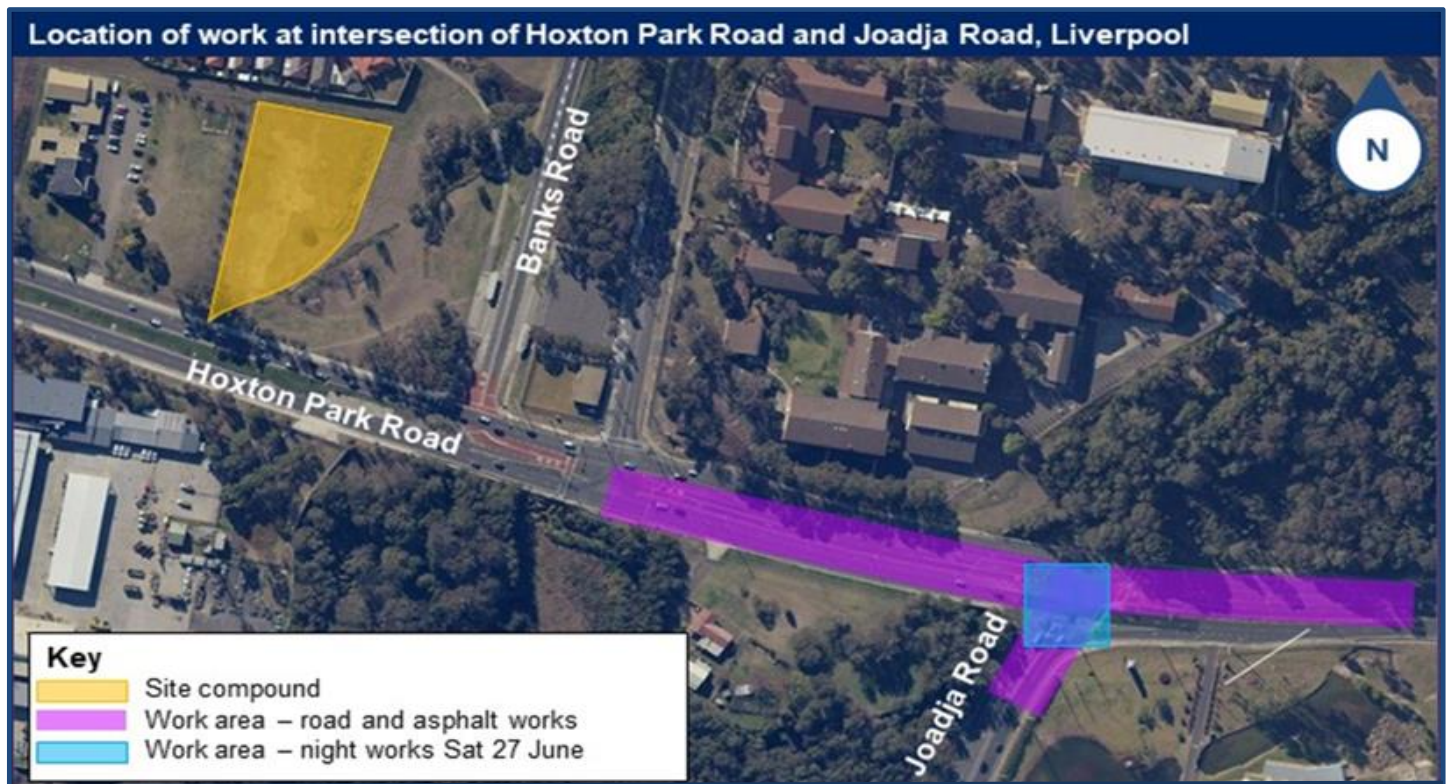


## Work continuing at Hoxton Park Road and Joadja Road, Hoxton Park from Saturday 27 June

The NSW Government is upgrading the Hoxton Park Road and Joadja Road intersection at Hoxton Park to ease congestion, reduce travel times and improve safety.



### Work continuing: July - September

This project is progressing well, with completion expected by September 2020.

So far we have:

- completed excavation and drainage work
- started concrete work
- relocated streetlights
- relocated traffic lights
- started road surfacing work

Our final stage of work will include:

- road surfacing
- kerb and guttering
- concreting
- line marking
- traffic signals
- installing signage
- demobilisation of the work site

### Additional night shift on Saturday 27 June

We will be onsite for one additional **night shift** on **Saturday 27 June** to install the new traffic lights at Joadja Road and Hoxton Park Road. To minimise disruption to residents, businesses and road users, we will not work on Friday 26 June or Sunday 28 June.

## Our work schedule

We will be on site for up to **60 night** and **30 day shifts** between **Tuesday 30 June** and **Wednesday 30 September**, weather permitting.

Our **night** shift hours will be between **7pm** and **6am** from **Sunday** to **Friday**. Our **day** work hours will be between **7am** and **6pm** from **Monday** to **Friday** and between **7am** and **2pm** on **Saturday**.

We will also be onsite for **one** additional **night shift** from **7pm Saturday 27 June** to **6am Sunday 28 June**, weather permitting.

## Contact

If you have feedback or concerns about the work schedule please contact our delivery partner Ward Civil, on 1800 897 841 or [hoxtoncomms@wardcivil.com.au](mailto:hoxtoncomms@wardcivil.com.au)

For information on other pinch points across Liverpool, please visit [rms.work/urbanpinchpoints](https://rms.work/urbanpinchpoints).

Thank you for your patience during this important work.

## How will the work affect you?

There may be some noise and disruption associated with this work including asphaltting, jackhammering, concrete cutting and excavating. We will make every effort to minimise noise and disruption by completing noisier tasks before midnight and using noise blankets where possible.

Residential access will be maintained. There will be no disruption to local bus timetables.

## Asbestos monitoring

Asbestos may be discovered in the ground in the project area as the project progresses. If we identify asbestos, we will implement an asbestos management plan which details safe work practices and will ensure all work is managed to strict Environment Protection Authority requirements.

## Traffic changes

To ensure the work zone is safe, lane closures, road closures and detours will be in place and may affect travel times.

Clearly marked detours and traffic controllers will be in place to help road users complete their journeys.

For the latest traffic updates, you can call 132 701, visit [livetraffic.com](https://www.livetraffic.com) or download the Live Traffic NSW App.



### Translating and Interpreting Service

If you need an interpreter, please call the Translating and Interpreting Service (TIS National) on **131 450** and ask them to telephone Roads and Maritime Services on 1800 897 841

#### Arabic

إذا كنتم بحاجة إلى مترجم، الرجاء الاتصال بخدمة الترجمة الخطية والشفوية (TIS National) على الرقم **131 450**، والطلب منهم الاتصال بوكالتكم Roads and Maritime Services على الرقم **1800 897 841**

#### Cantonese

若你需要口譯員，請致電 **131 450** 聯絡翻譯和口譯服務署 (TIS National)，要求他們致電 **1800 897 841** 聯絡 Roads and Maritime Services。

#### Mandarin

如果你需要口譯員，請致電 **131 450** 联系翻译和口译服务署 (TIS National)，要求他们致电 **1800 897 841** 联系 Roads and Maritime Services。

#### Greek

Αν χρειάζεστε διερμηνέα, παρακαλείστε να τηλεφωνήσετε στην Υπηρεσία Μετάφρασης και Διερμηνείας (Εθνική Υπηρεσία TIS) στο **131 450** και ζητήστε να τηλεφωνήσουν Roads and Maritime Services στο 1800 897 841

#### Italian

Se desiderate l'assistenza di un interprete, prego telefonare al Servizio Interpreti e Traduttori (TIS National) al **131 450** chiedendo di contattare Roads and Maritime Services al **1800 897 841**

#### Korean

통역사가 필요하시면 번역통역서비스 (TIS National) 에 **131 450** 으로 연락하여 이들에게 **1800 897 841** 번으로 Roads and Maritime Services 에 전화하도록 요청하십시오.

#### Vietnamese

Nếu cần thông ngôn viên, xin quý vị gọi cho Dịch Vụ Thông Phiên Dịch (TIS Toàn Quốc) qua số **131 450** và nhờ họ gọi cho Roads and Maritime Services qua số **1800 897 841**