

Safety improvements to the intersection of Pacific Highway and Houston Mitchell Drive, south of Port Macquarie

The NSW Government is investing \$2.9 million to reduce crashes and improve safety at this intersection. The work is being funded from the Safer Roads Program.

Earlier this year, Transport for NSW advised that we were working to improve safety at this important intersection on the Pacific Highway south of Port Macquarie. Work is being carried out in stages, with stage one complete, and stage two starting later this month.

Stage one (completed): Work was carried out earlier this year which included:

- Reducing the speed limit on the southbound lanes of the Pacific Highway from 110km/h to 100km/h, from one kilometre north of Houston Mitchell Drive to 600 metres south of Houston Mitchell Drive
- Installing vehicle activated warning signs to increase awareness and provide advanced warning of motorists' travel speed
- Installing a temporary variable message board on the highway north of the intersection advising 'Turning traffic ahead, proceed with caution'
- Clearing vegetation in vicinity of the intersection and to improve sight distance and safety.

Stage two (starting end of this month): Work will start on this stage of work at the end of this month and will include:

- Installing a left turn deceleration lane on the Pacific Highway into Houston Mitchell Drive for southbound motorists
- Installing an acceleration lane on the Pacific Highway for southbound motorists turning left out of Houston Mitchell Drive
- Widening of the road shoulders for motorists turning in and out of Houston Mitchell Drive
- Installing new safety barriers and line marking

We have included a diagram to show the planned work.

Stage three (future program): Future improvements are also being considered and may include:

- Removing the right turn into Houston Mitchell Drive and providing a U-Turn bay north at the intersection at Ryans Road
- Removing the right turn out of Houston Mitchell Drive and providing a U-Turn bay south at the intersection Aintree Road

Our work schedule

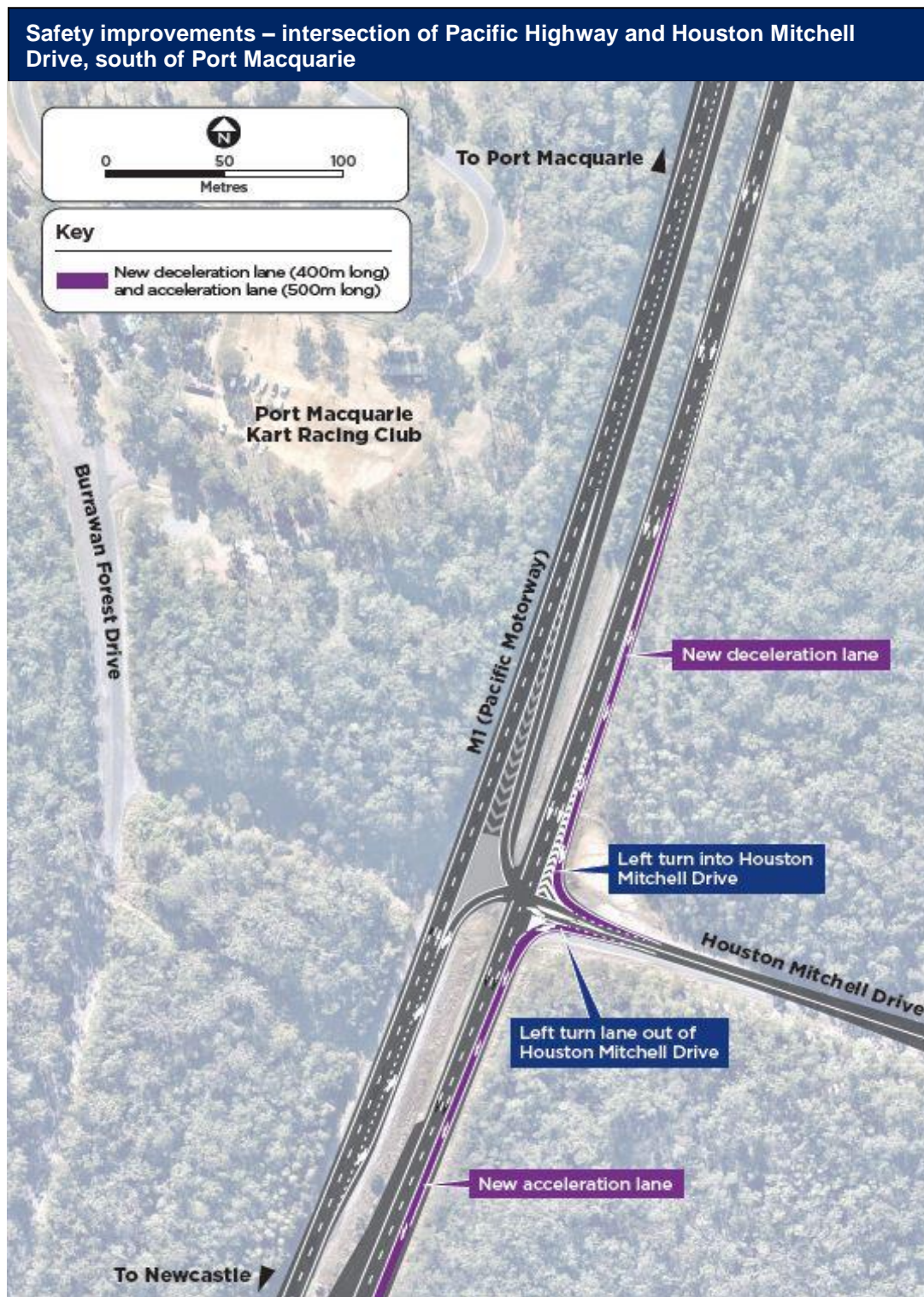
We expect to start work on the next stage of safety improvements later this month. We will provide more information about our work schedule before work starts.

Next steps

We are working to finalise the proposed design for stage two of the safety improvements and get ready to start work. We will keep the community updated as the project progresses.

Contact

If you have any questions please contact our Project Manager, Alban Bunnemeyer, during business hours on 0419 499 326 or email alban.r.bunnemeyer@transport.nsw.gov.au. For more information on our projects, visit transport.nsw.gov.au.



If you need help understanding this information, please contact the Translating and Interpreting Service on 131 450 and ask them to call us on 0419 499 326.