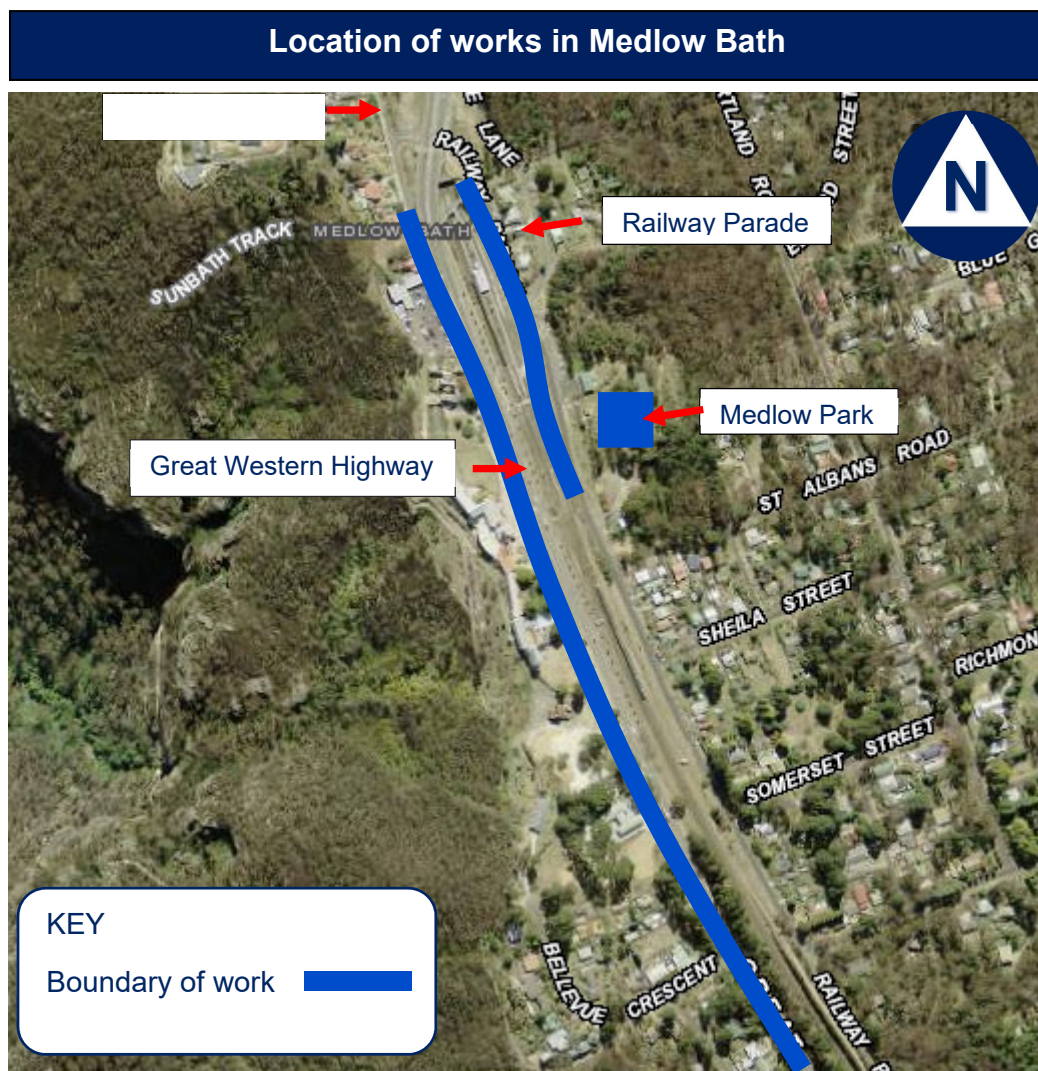


## Geotechnical investigations in Medlow Bath from Tuesday 20 April to Monday 24 May 2021

The NSW Government is carrying out essential geotechnical investigations as part of the Great Western Highway Upgrade Program in Medlow Bath

Transport for NSW will carry out various geotechnical works, including the drilling of boreholes, test pits and pavement cores on and near the Great Western Highway over the coming five weeks to inform the design of the Highway Upgrade.



The geotechnical investigations will take place along the Great Western Highway and in areas on Railway Parade, Station Street, and Medlow Park.

The investigations will further inform the development of the Great Western Highway Upgrade Program in Medlow Bath, including road and shared path design, the proposed pedestrian bridge and drainage.

## Day works

This work is expected to take five weeks to complete, between Tuesday 20 April and Monday 24 May 2021, weather permitting. Work hours will be between 7am and 5pm, Monday to Friday.

## Night works

Some of our works, particularly investigations on or near the Highway, need to be carried out at night to minimise traffic disruption and reduce safety risks to the workers and motorists.

There will be up to six shifts of night work, between Monday 17 May and Monday 24 May, weather permitting. Work will take place between 9pm and 5am. There will be no work on Friday and Saturday nights.

Work at each site for geotechnical investigation will last approximately three hours.

We will notify you in advance if we need to do any work outside of these hours.

## How will the work affect you?

Where possible, we will make every effort to minimise impacts.

Access to businesses and residences will be maintained during the work. Please exercise caution as you enter and exit your property and follow the directions of traffic controllers.

There will be some noise associated with this work, but every effort will be made to minimise the impact on residents. Drilling works will be undertaken by a geotechnical drilling rig and digging works with a small excavator.

## Traffic changes

From Tuesday 20 April to Friday 23 April 2021, there will be no impact to traffic from these works.

From Monday 26 April 2021 until the completion of works, there may be localised shoulder closures in areas where testing is being carried out during the day.

During night work, between Monday 17 and Monday 24 May, traffic control may be in place where necessary, with reduced speed limits of 40km/h and temporary lane closures.

Motorists are advised to drive to the conditions, and follow the directions of signs and traffic control.

For the latest traffic updates, you can call 132 701, visit [livetraffic.com](http://livetraffic.com) or download the [Live Traffic NSW](#) App.

## Contact

If you have any questions about the works, please contact Transport for NSW on 1800 953 777 or [gwhd@transport.nsw.gov.au](mailto:gwhd@transport.nsw.gov.au). For more information on our projects, visit [nswroads.work/greatwesternhighway](http://nswroads.work/greatwesternhighway).



If you need help understanding this information, please contact the Translating and Interpreting Service on 131 450 and ask them to call 1800 953 777.