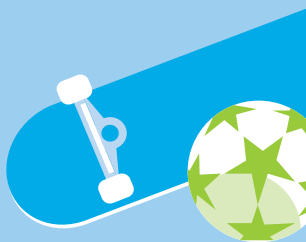


F6 Extension Stage 1

**Do you walk? Get active? Play?
Get together with friends?**

**Tell us how you use
Rockdale
Bicentennial
Park and
Scarborough
Park North**





About the F6 Extension Stage 1

The F6 Extension Stage 1 will connect President Avenue at Kogarah to the New M5 Motorway at Arncliffe, removing over 2,000 trucks a day from surface roads; returning local streets to local communities.

As part of an integrated transport solution this four kilometre underground motorway will ease congestion on surface roads and allow users to bypass up to 23 sets of traffic lights on the Princes Highway between St Peters and Kogarah. It will contribute to a more accessible, more liveable and productive Greater Sydney.

The F6 Extension Stage 1 project team would like to know how you use the open space and current facilities at Rockdale Bicentennial Park and Scarborough Park North.

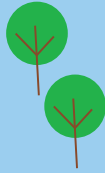
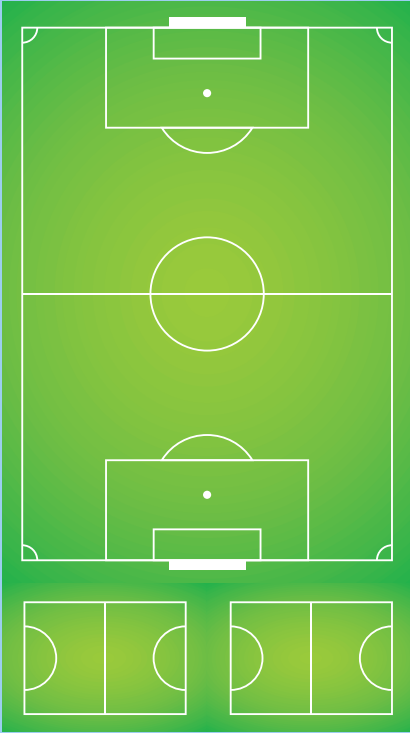
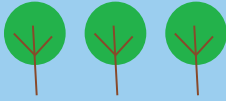
Our construction activities at Rockdale Bicentennial Park will have an impact on the way the local community, community groups and sporting clubs access and use the area. We are committed to working with Bayside Council and the local community to minimise impacts during construction and to reinstate the park and the playing fields once construction is complete.

This is why we are asking for your feedback about how you use Rockdale Bicentennial Park and Scarborough Park North.

Your feedback will help us understand the current use and what facilities you would like to see in the area in the future to meet the needs of your community.

To provide your feedback and have your say, please visit rms.nsw.gov.au/F6 before 31 May 2019 or call us on **1800 789 297**.






Contact the F6 team

 rms.nsw.gov.au/F6

 F6Extension@rms.nsw.gov.au

 1800 789 297

 Roads and Maritime Services F6 team
Locked Bag 928, North Sydney NSW 2059



131 450

If you need help understanding this information, please contact the Translating and Interpreting Service on 131 450 and ask them to call us on 1800 789 297.