

## Investigation work on Devlin Street, Church Lane and Blaxland Lane, Ryde from Monday 8 July

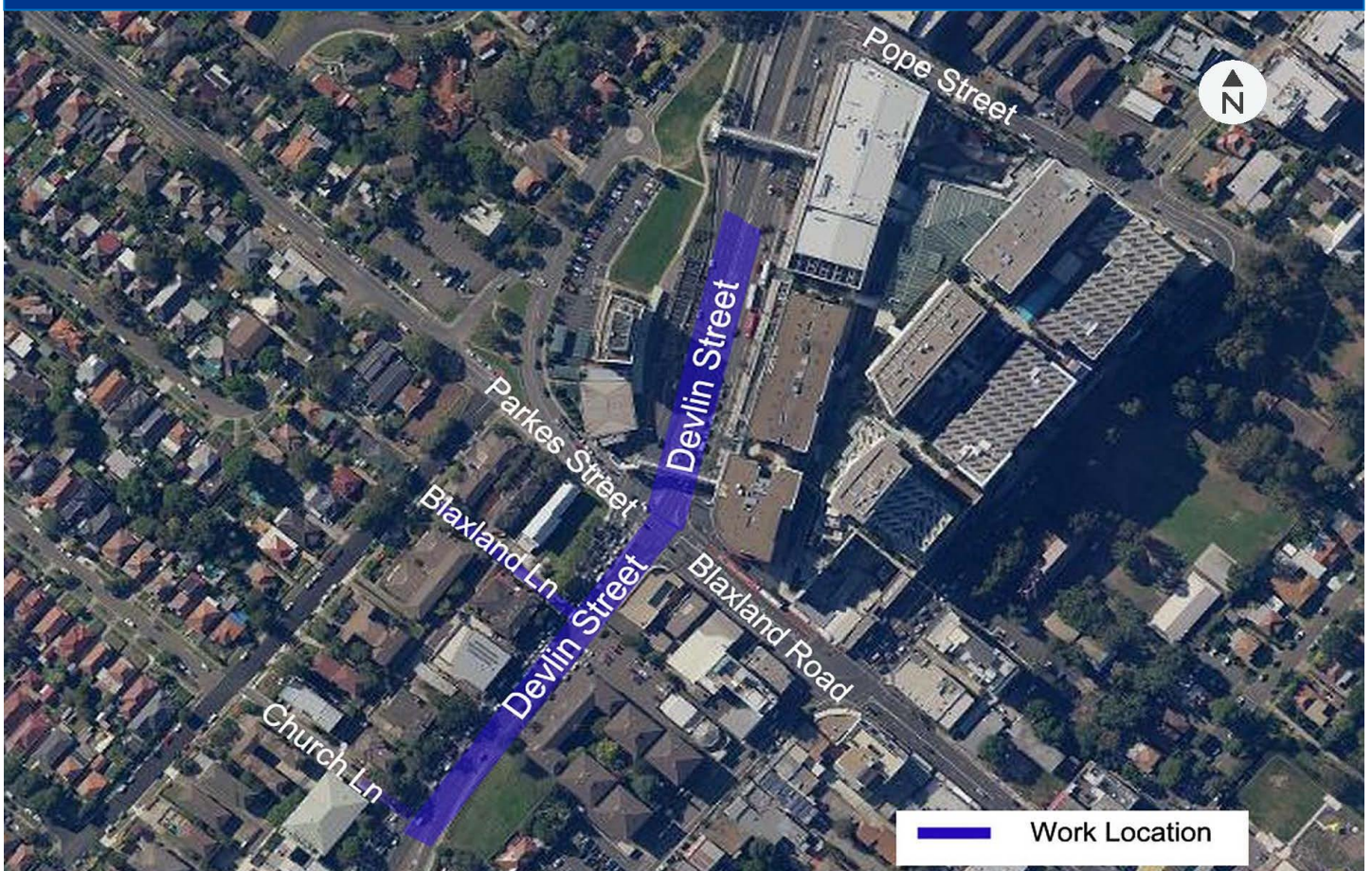
The NSW Government has funded this project as part of its \$300 million Urban Roads Pinch Point Program, which aims to reduce congestion and improve travel time on Sydney's busiest corridors.

Roads and Maritime Services will carry out investigation work to inform and plan an upgrade of the intersection at Devlin Street and Blaxland Road, Ryde.

Our work will include:

- potholing
- cutting the road surface and footpaths
- investigating underground utilities.

Location of work on Devlin Street, Ryde



## Our work schedule

We will be on site for **five night shifts** between **Monday 8 July** and **Friday 2 August**, weather permitting.

Our work hours will be between **8pm** and **5am** from **Sunday** to **Friday**.

## Contact

If you have any questions or would like to receive email notifications of project updates, please contact us on 1800 572 004 (during business hours) or [pinchpoint@rms.nsw.gov.au](mailto:pinchpoint@rms.nsw.gov.au)

For more information on our projects, visit [rms.nsw.gov.au](http://rms.nsw.gov.au).

Thank you for your patience during this important work.

## How will the work affect you?

Our work may be noisy at times but we will do everything we can to minimise its impact, including completing the noisier activities by **11pm**.

To minimise disruption to residents, businesses and road users, we will not work more than two nights in any week.

## Traffic changes

There will be some temporary traffic changes during our work hours to ensure the work zone is safe. Lane closures may be in place and may affect travel times. Please keep to speed limits and follow the direction of traffic controllers and signs.

For the latest traffic updates, you can call 132 701, visit [livetraffic.com](http://livetraffic.com) or download the Live Traffic NSW App.

## What is a Pinch Point?

A pinch point is a traffic congestion point, either at an intersection or on a short length of road, where a traffic bottleneck exists. They cause traffic build-up and travel delays at these spots and on the wider road network.

More than \$825 million has been committed to the pinch point program. Each project will ease congestion, reduce traffic delays and improve travel times on Sydney's major roads.



### Translating and Interpreting Service

If you need an interpreter, please call the Translating and Interpreting Service (TIS National) on **131 450** and ask them to telephone Roads and Maritime Services on 1800 572 004

**Arabic**  
إذا كنتم بحاجة إلى مترجم، الرجاء الاتصال بخدمة الترجمة الخطية والشفهية (TIS National) على الرقم **131 450**، والطلب منهم الاتصال بوكالتكم Roads and Maritime Services على الرقم 1800 572 004

**Cantonese**  
若你需要口譯員，請致電 **131 450** 聯絡翻譯和口譯服務署 (TIS National)，要求他們致電 1800 572 004 聯絡 Roads and Maritime Services。

**Mandarin**  
如果你需要口譯員，請致電 **131 450** 联系翻译和口译服务署 (TIS National)，要求他们致电 1800 572 004 联系 Roads and Maritime Services。

### Greek

Αν χρειάζεστε διερμηνέα, παρακαλείστε να τηλεφωνήσετε στην Υπηρεσία Μετάφρασης και Διερμηνείας (Εθνική Υπηρεσία ΤΙΣ) στο **131 450** και ζητήστε να τηλεφωνήσουν Roads and Maritime Services στο 1800 572 004

### Italian

Se desiderate l'assistenza di un interprete, prego telefonare al Servizio Interpreti e Traduttori (TIS National) al **131 450** chiedendo di contattare Roads and Maritime Services al 1800 572 004

### Korean

통역사가 필요하시면 번역통역서비스 (TIS National) 에 **131 450** 으로 연락하여 이들에게 1800 572 004 번으로 Roads and Maritime Services 에 전화하도록 요청하십시오.

### Vietnamese

Nếu cần thông ngôn viên, xin quý vị gọi cho Dịch Vụ Thông Phiên Dịch (TIS Toàn Quốc) qua số **131 450** và nhờ họ gọi cho Roads and Maritime Services qua số 1800 572 004