



October 2020

## **Intersection improvements Devlin Street, Blaxland Road and Parkes Street, Ryde, from Thursday 29 October 2020**

The Australian and NSW Governments are taking action to improve Sydney's road network, easing congestion and improving traffic flow, travel times and road safety.

Transport for NSW will add a fourth northbound lane on Devlin Street, Ryde between Victoria Road and Blaxland Road. The additional northbound lane will ease congestion and improve traffic flow, travel times and road safety through the Devlin Street, Blaxland Road and Parkes Street intersection.

### **Early work**

We will start early work on **Thursday 29 October** and work up to **three nights a week**.

During this early work we will install signage, test the existing ground conditions, identify the underground utility services and complete survey activities. We will also set up our site office.

### **Our proposed construction schedule**

We need to carry out most of our work at night to minimise traffic disruption and reduce safety risks to the workers and road users. From **Sunday 15 November** we will work up to **five night shifts a week** to finish the project. By working five nights per week, we can reduce the overall length of our work and limit the impact on the local community. We plan to finish our work in late 2022.

Our night work hours will be between **8pm and 5am from Sunday to Thursday**. Our day work hours are from **7am to 6pm, Monday to Friday**, and **8am to 1pm on Saturdays**.

If you have any concerns or questions about the proposed construction schedule please send your feedback to [pinchpoint@rms.nsw.gov.au](mailto:pinchpoint@rms.nsw.gov.au) or call us on to 1800 572 004.

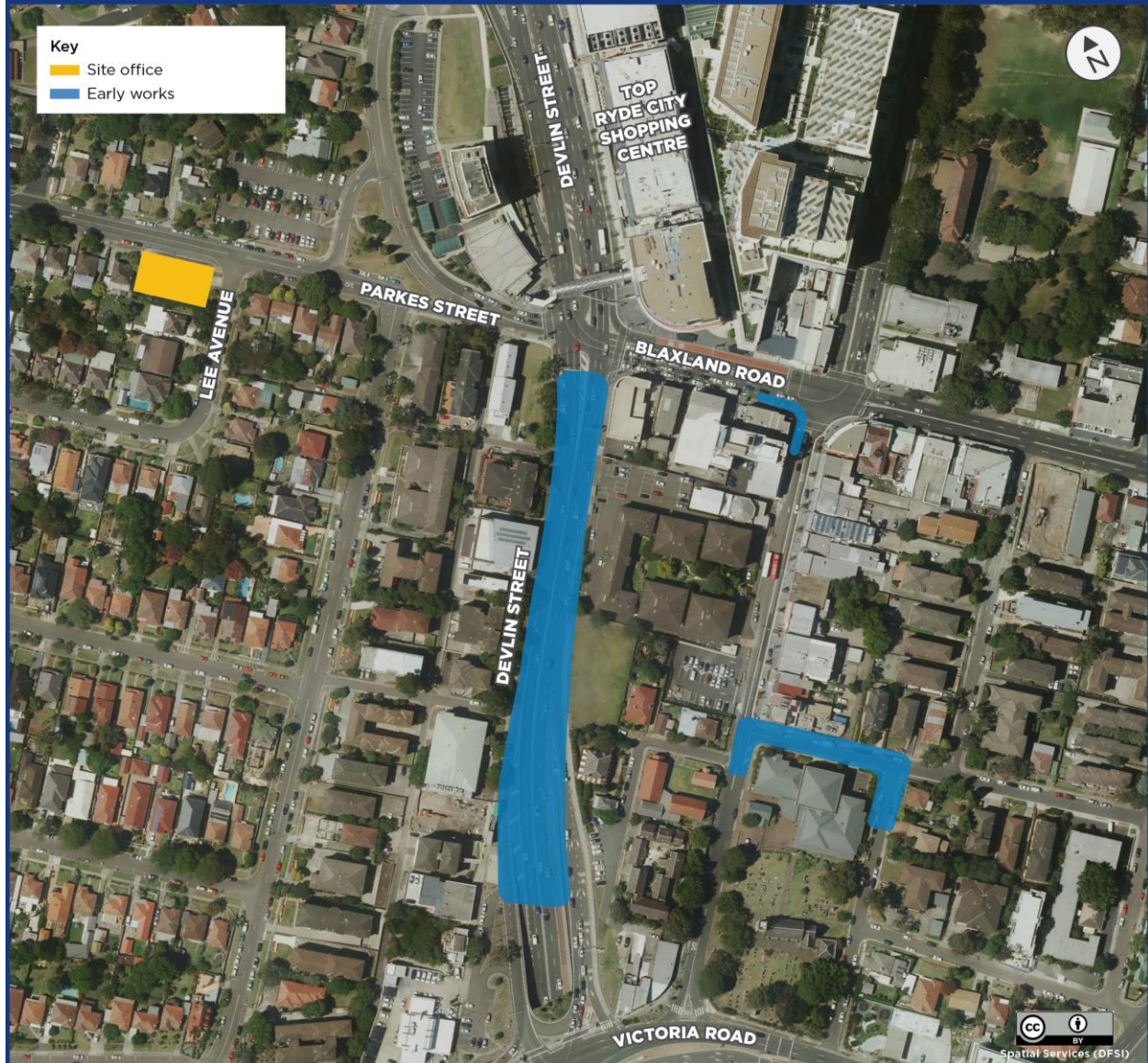
### **How will the work affect you?**

Our night work may be noisy at times. We will do everything we can to minimise its impact, including staging the work in different locations along the work zone and completing the noisier activities by **midnight**.

There will be temporary traffic changes during our work hours to ensure the work zone is safe.

Lane closures will be in place and may affect travel times. Please keep to speed limits and follow signs and traffic controllers' directions. For the latest traffic updates, you can call 132 701, visit [livetraffic.com](http://livetraffic.com) or check the Live Traffic NSW App.

## Intersection improvements Devlin Street, Blaxland Road and Parkes Street, Ryde



### Contact us

If you have any questions, please contact us on:

 1800 572 004

 [pinchpoint@rms.nsw.gov.au](mailto:pinchpoint@rms.nsw.gov.au)

 [nswroads.work/devlinst](mailto:nswroads.work/devlinst)  
to register for email updates

For more information on our projects,  
visit [rms.nsw.gov.au](https://rms.nsw.gov.au).



If you need help understanding this information, please contact the Translating and Interpreting Service on **131 450** and ask them to call us on **1800 572 004**.

#### Cantonese

若你需要口譯員，請致電 **131 450** 聯絡翻譯和口譯服務署 (TIS National)，要求他們致電 1800 572 004 聯絡 Transport for NSW。

#### Mandarin

如果你需要口譯員，請致電 **131 450** 联系翻译和口译服务署 (TIS National)，要求他们致电 1800 572 004 联系 Transport for NSW。

#### Korean

통역사가 필요하시면 번역통역서비스 (TIS National) 에 **131 450** 으로 연락하여 이들에게 1800 572 004 번으로 Transport for NSW 에 전화하도록 요청하십시오.