

Cockatoo Island Wharf upgrade

ENVIRONMENTAL AND SOCIO-ECONOMIC IMPACTS

November 2016

Assessment of the environmental, social and economic impacts of the project is a statutory requirement as part of the planning approvals process.

There would be temporary impacts during the work to upgrade the wharf. These would be carefully managed and measures put in place including:

- ▶ Informing customers of alternative transport options during the temporary closure of the wharf
- ▶ Minimising the disturbance of sediments and rocks on the harbour bed
- ▶ Minimising disturbance to aquatic life
- ▶ Minimising temporary noise impacts on nearby residents and businesses wherever possible
- ▶ Keeping nearby residents, businesses and customers informed about the project and about early morning and night work.

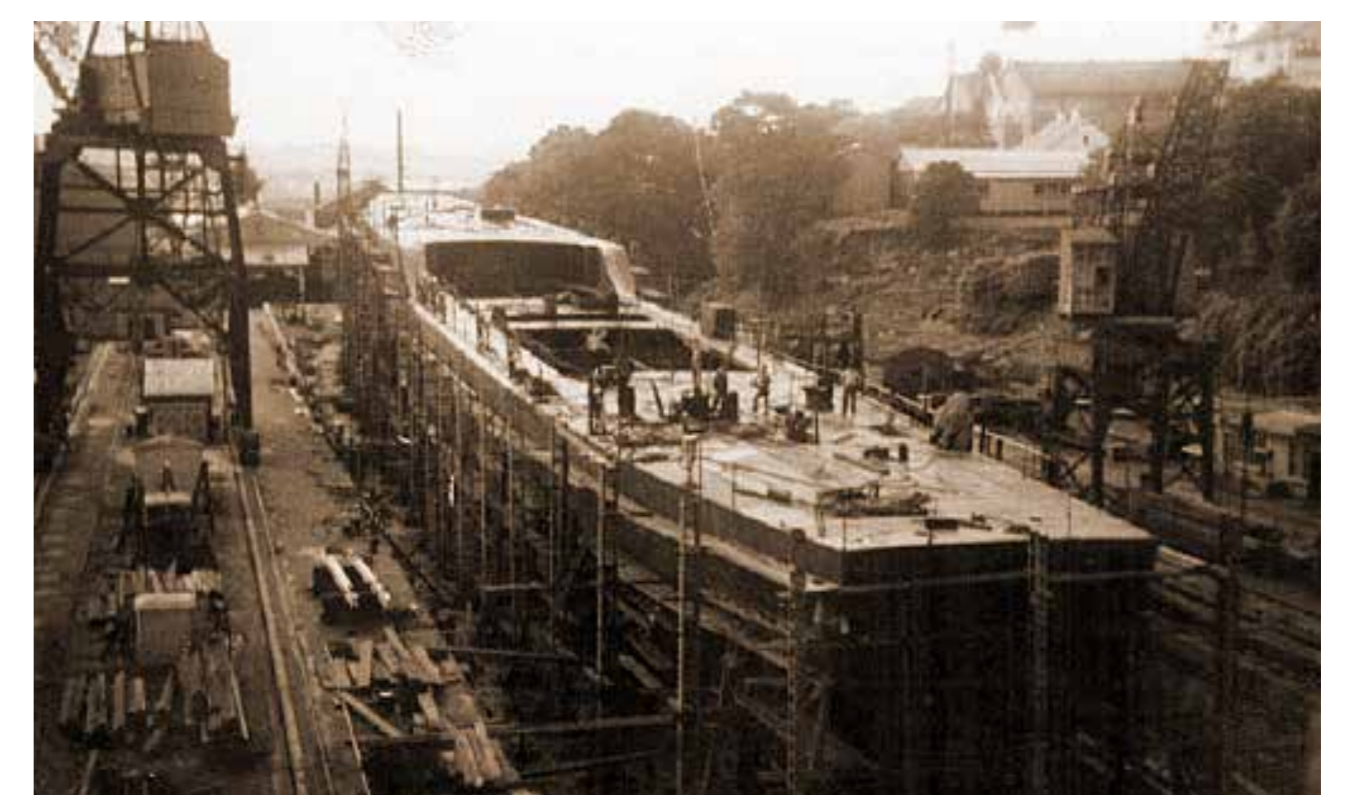
Heritage

Cockatoo Island is a significant heritage site. However, the wharf was built relatively recently and is not of heritage significance.

- ▶ Landside facilities and amenities are within the World Heritage listed item known as “Australian Convict Sites”
- ▶ The entire island is listed as a National heritage item
- ▶ Individual items within the island are listed on the Commonwealth Heritage List.

As part of the Review of Environmental Factors for the proposed wharf upgrade both Aboriginal and non-Aboriginal cultural heritage has been assessed. The assessment concludes that the project would not impact the significance of any of the heritage items listed at Cockatoo Island.

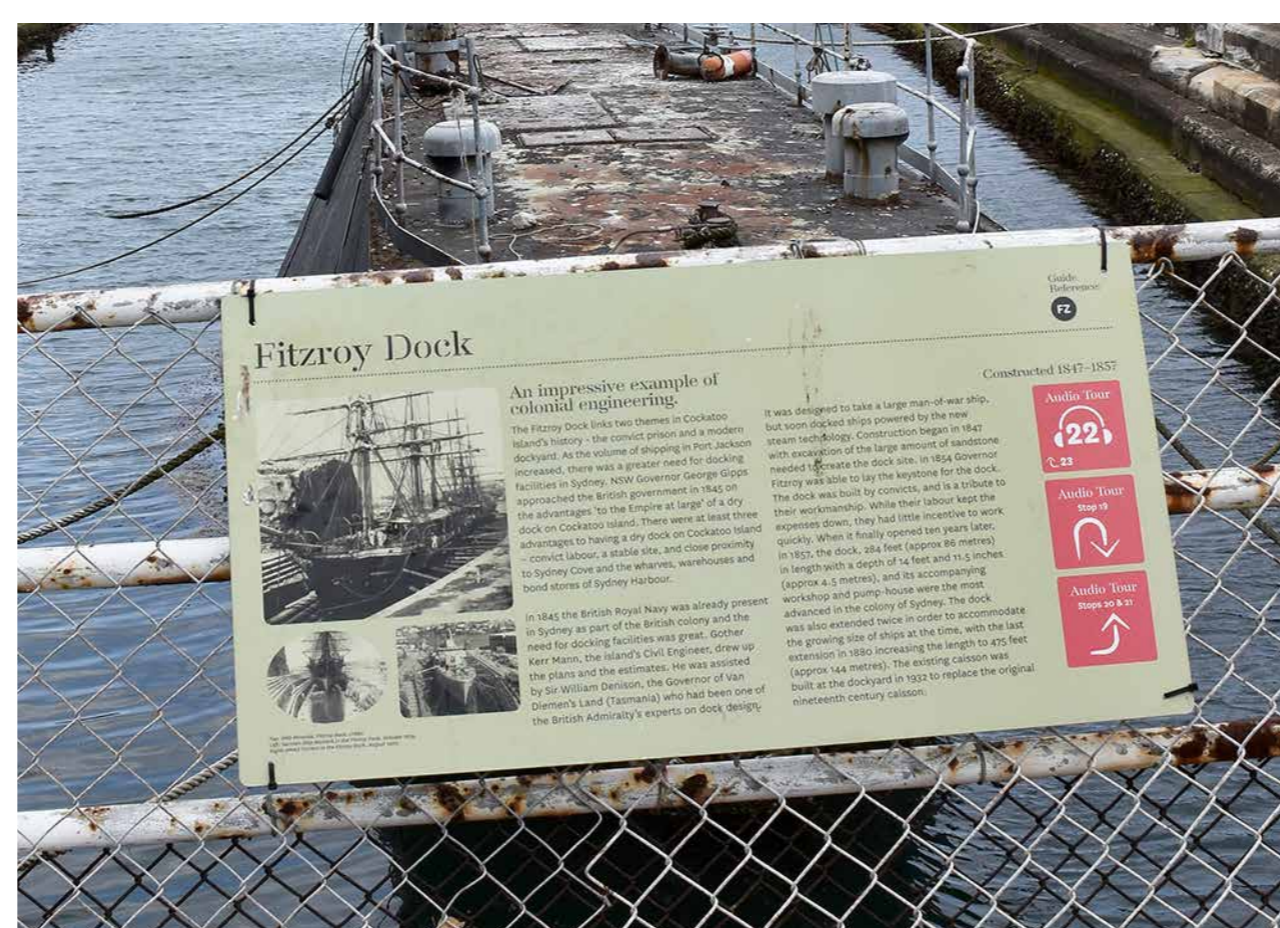
The ‘Statement of Heritage Impact’ is included in the Review of Environmental Factors documentation which can be viewed at www.rms.nsw.gov.au/cockatoo-island-wharf or any of the additional locations where the Review of Environmental Factors is on display.



HMAS Vampire



Old plan of Cockatoo Island



Fitzroy Dock



HMAS Vernon



Military guardhouse and isolation cells



The Powerhouse area