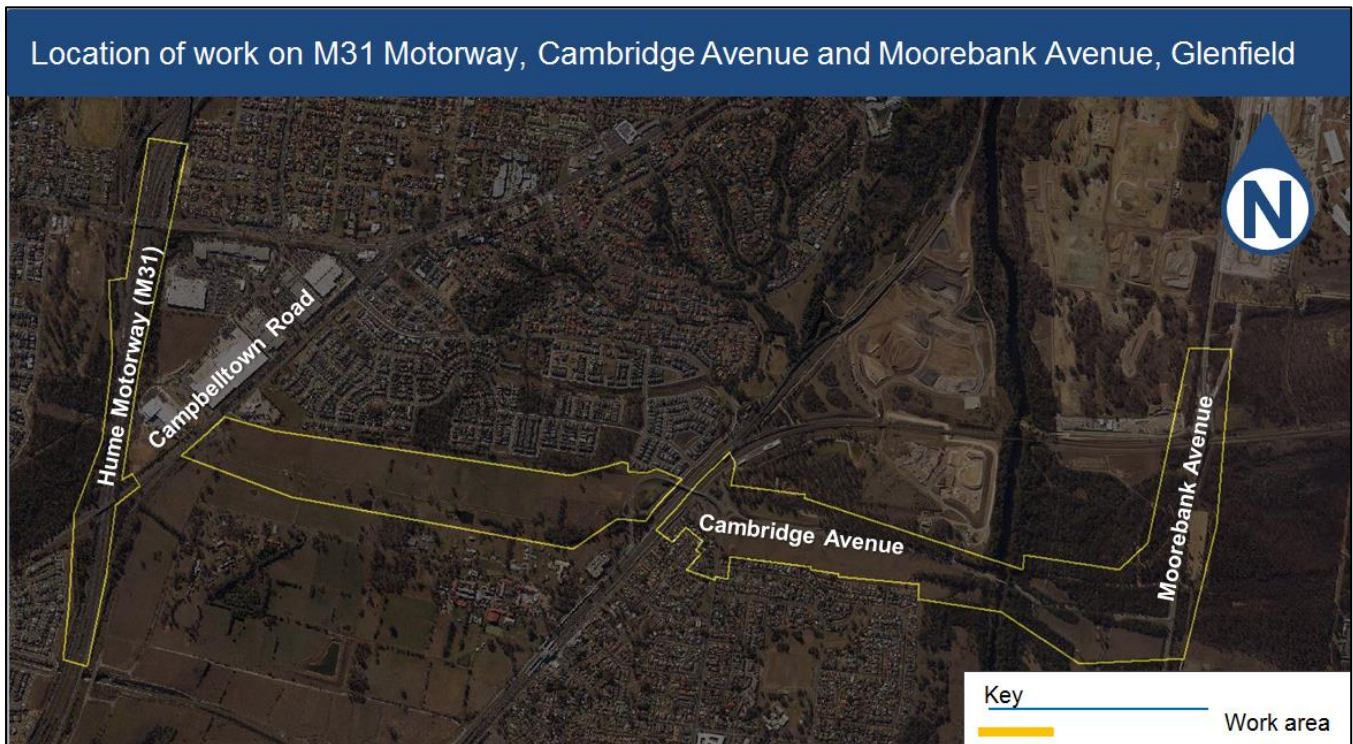


Investigation work in Glenfield and M31 Motorway from Wednesday 30 October 2019

As part of our planning for potential road upgrades, we are conducting investigation and survey work in the local area.

Roads and Maritime Services will carry out essential survey and investigation work on Cambridge Avenue between M31 Motorway and Moorebank Avenue. This work is to inform the planning for potential road improvements in the area.



How will the work affect you?

There will be ecologists and surveyors moving around the work area with equipment for survey and investigations. Some of this work may be noisy at times but we will do everything we can to minimise its impact.

Traffic changes

If temporary traffic changes are required, warning signs will be in place to direct road users through the work site. Traffic flow will be maintained in both directions.

Our work schedule

Work will be carried out between **30 October** and **24 December 2019**, weather permitting.

Day work will take place between **7am** and **6pm** Monday to Friday and Saturdays from **8am** to **1pm**.

Contact

If you have any questions, please contact us on 1800 370 601 or email cambridgeavenue@rms.nsw.gov.au

For more information on our projects, visit <http://www.rms.nsw.gov.au/projects/sydney-west/index.html>

Thank you for your patience during this important work.



If you need help understanding this information, please contact the Translating and Interpreting Service on 131 450 and ask them to call us on 1800 370 601.