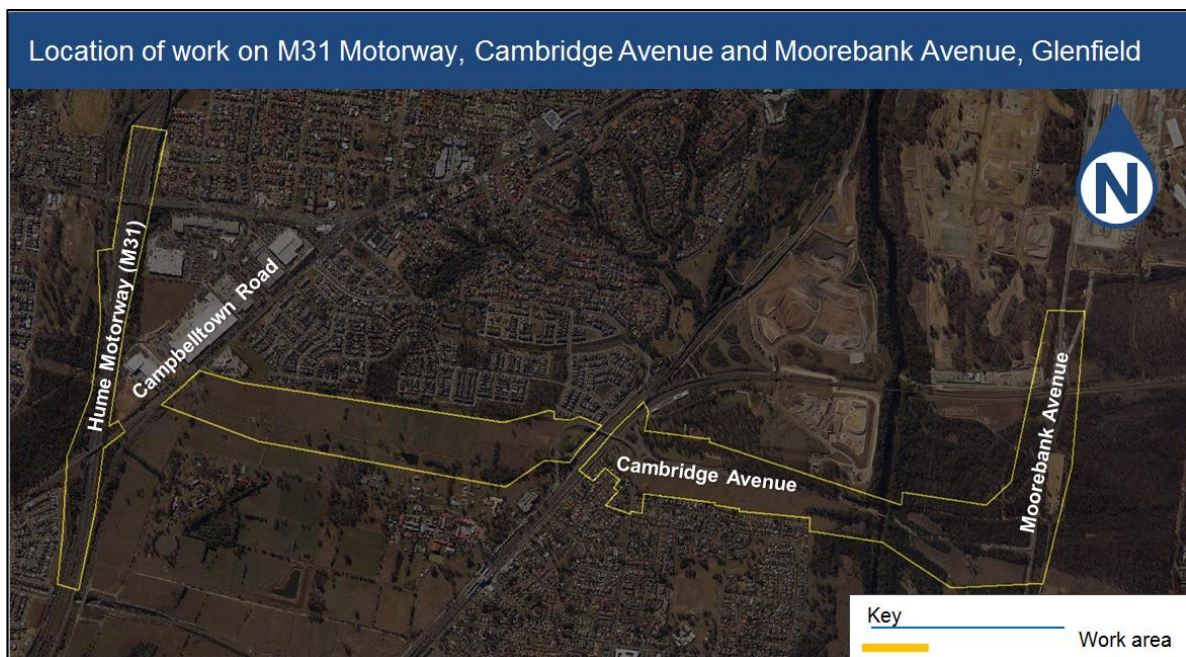


Investigation and survey work on the M31 Motorway, Cambridge Avenue and Moorebank Avenue, Glenfield

As part of our planning for potential road upgrades, we are conducting investigation and survey work in the local area.

Transport for NSW will carry out essential survey and investigation work on Cambridge Avenue, Moorebank Avenue and the M31 Motorway to assist with planning for future road improvements in the area.



How will the work affect you?

Our work may be noisy at times but we will do everything we can to minimise its impact.

Traffic changes

If traffic changes are required, warning signs will be in place to direct road users through the work site. Traffic flow will be maintained in both directions. Thank you for your patience during this important work.

Our work schedule

Work will be carried out between **13 January and 31 March 2020**, weather permitting.

Day work will take place between **7am and 6pm Monday to Friday** and **Saturdays** from **8am to 1pm**. Night work will take place between **10pm and 5am Monday to Friday**.

Contact

If you have any questions, please contact us on 1800 370 601 or email cambridgeavenue@rms.nsw.gov.au

For more information on our projects, visit <http://www.rms.nsw.gov.au/projects/sydney-west/index.html>



If you need help understanding this information, please contact the Translating and Interpreting Service on 131 450 and ask them to call us on 1800 370 601.