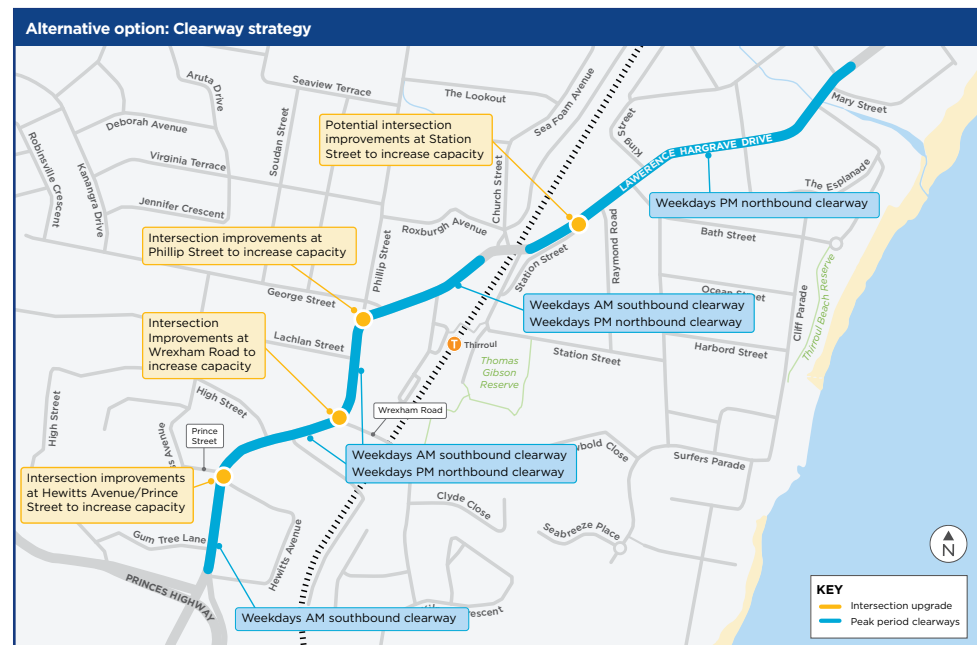
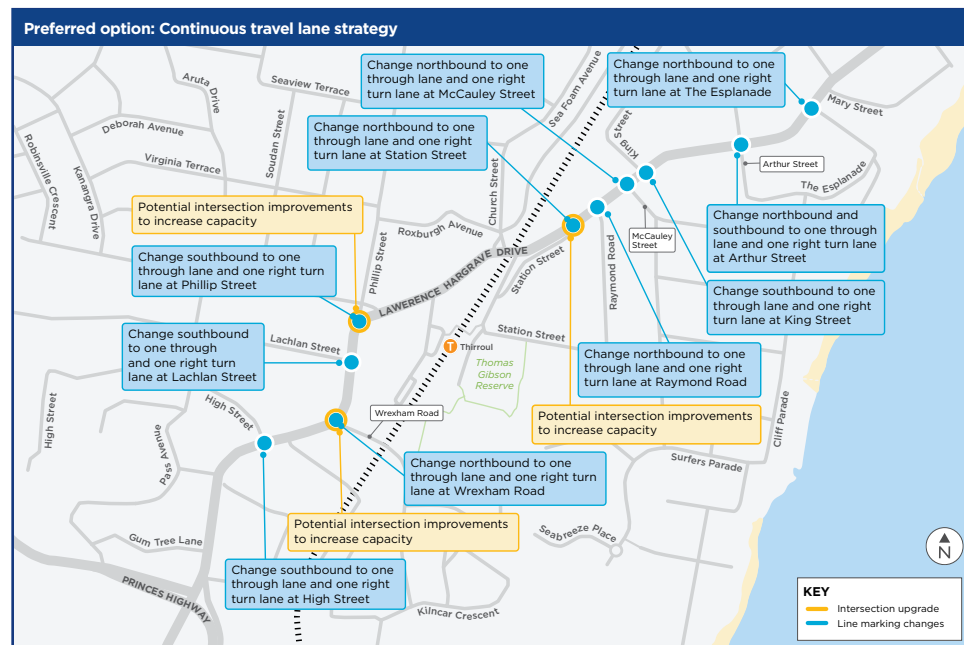


# Transport for NSW Lawrence Hargrave Drive, Thirroul



## Proposal details

A preferred option and an alternative option are proposed for Thirroul. We are asking the community to consider both options and provide feedback on their preferred approach. Both options aim to improve travel times for individuals, public transport and freight and improve reliability across the transport network. There would be impacts to parking under both options. We will ensure parking offsets are in place before the completion of the project.



### Preferred option: Changes to intersections and traffic management to create one continuous travel lane

A number of intersection and traffic changes would be implemented at key congestion points along Lawrence Hargrave Drive to create one continuous lane of travel.

The changes would allow transport users to travel continuously without being temporarily stopped behind cars turning right off Lawrence Hargrave Drive.

Changes are proposed at:

- The Esplanade
- Arthur Street
- King Street
- McCauley Street
- Raymond Road
- Station Street
- Phillip Street
- Lachlan Street
- Wrexham Road
- High Street

This option includes changes to existing on-street parking and intersections to allow traffic to flow continuously through the town centre as well as the potential construction of a right turn lane at Station Street.

### Alternative option: Introduction of clearways along Lawrence Hargrave Drive during peak hours on weekdays

Clearways would be implemented on Lawrence Hargrave Drive southbound between Church Street and the Princes Highway during the morning peak, and northbound between Prince Street and Mary Street during the afternoon peak. This would provide two continuous travel lanes for traffic through Thirroul. The location of clearways are shown on the map above.

To allow the operation of two continuous travel lanes, changes to existing on-street parking and intersections along Lawrence Hargrave Drive would need to be made, including:

- Weekdays southbound clearway between Church Street and the Princes Highway between 6:30am and 9:30am.
  - Weekdays northbound clearway between Prince Street and Mary Street between 3pm and 6pm.
  - Intersection improvements at Phillip Street, Wrexham Road and Hewitts Avenue/Prince Street.
  - Potential intersection improvements at Station Street including the construction of a right turn lane.
- Clearways are not proposed on weekends.