

Changed traffic conditions and night work at Strongs Road and Jaspers Brush Road, Berry to Bomaderry

The NSW Government is upgrading the Princes Highway between Berry and Bomaderry to improve safety, increase road capacity and improve traffic flow.

What are we doing?

We will be making changes to the Strongs Road and Jaspers Brush Road intersections to allow us to complete construction of this section of the project.

The new overpass at Strongs Road will open on the night of **Thursday 22 April** (weather permitting), connecting Strongs Road with Jaspers Brush Road. At the same time Jaspers Brush Road will open in its new alignment.

The current access to Strongs Road from the Princes Highway will temporarily close at this time. Motorists wishing to access Strongs Road will be able to turn at Jaspers Brush Road and use Strongs Road overpass. A temporary right turn will be installed from the Princes Highway at Jaspers Brush Road for northbound traffic.

At this time the bus stop at Jaspers Brush Road will move to its final location and the Strongs Road bus stop will be closed temporarily (see map over page).

Right turns from Jaspers Brush Road to the Princes Highway will not be permitted. Motorists wishing to travel north on the Princes Highway from Jaspers Brush Road will be required to travel south on the highway and use the U-turn facility at Ison Lane.

How will it affect you?

To prepare for these traffic changes, we will be carrying out line marking on Jaspers Brush Road, Strongs Road and the Princes Highway on the night of **Thursday 22 April**, weather permitting. There may be some noise and light associated with the work.

Work will be carried out between **6pm** and **7am** to minimise the impact to motorists.

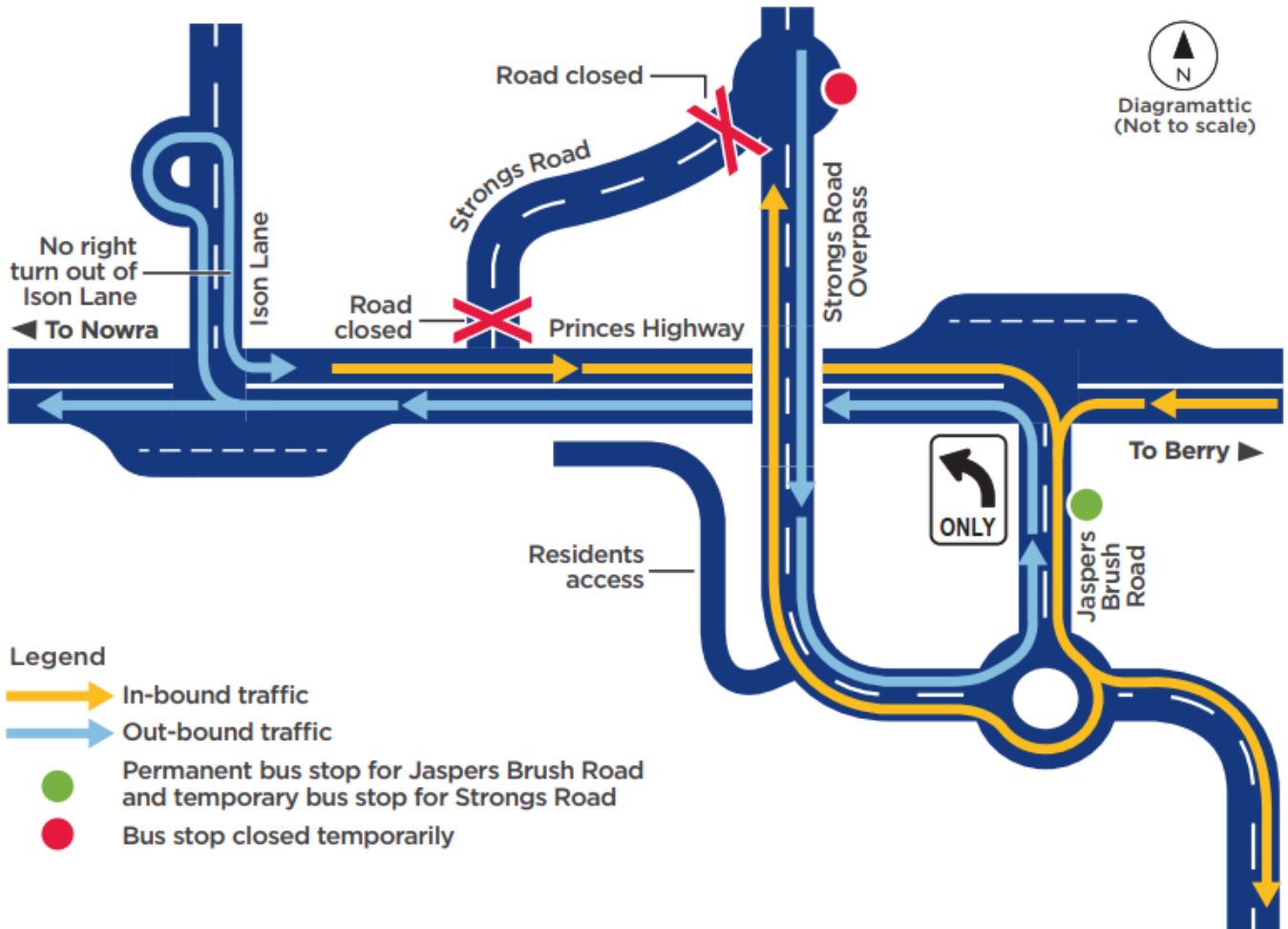
Should the work need to be postponed, new dates will be advertised on variable message signs.


Ongoing work in this location will take six months to complete, weather permitting. There may be some short traffic stoppages during construction so please follow the directions of traffic controllers and signage.

For the latest traffic updates call 132 701, visit livetraffic.com, or download the Live Traffic App. We thank you for your patience during this important work.

Contact

If you have any questions, please contact the project team on 1800 506 976 or BerrytoBomaderryUpgrade@DSWJV.com.au. For more information on our projects, visit roads-maritime.transport.nsw.gov.au




 If you need help understanding this information, please contact the Translating and Interpreting Service on 131 450 and ask them to call us on 1800 506 976