

Temporary construction site to build concrete segments for the Batemans Bay Bridge replacement project, south of Mogo

What are we doing?

A temporary facility will be built at the existing quarry on Springwater Place, about six kilometres south of Mogo. The facility is required to build the 168 concrete box segments for the Batemans Bay Bridge replacement project.

Work to build the site will start from **Monday 1 April 2019** and will take around two weeks to complete, weather permitting. The site will be in use for about two years.

Work to build the temporary facility will include installing fencing and environmental controls, levelling the site, building a concrete slab and temporary sheds and offices, setting up and using specialty equipment to make the concrete components and setting up parking and amenities for workers.

Benefits of setting up the facility at this location include keeping employment and training opportunities in the local area, minimising environmental impacts by using an existing quarry site and reducing heavy vehicle movements in the Batemans Bay town centre.

What you need to know

There may be some noise and vibration associated with the piling work required to build the temporary facility.

There may also be some vibration and an increase in the amount of heavy vehicles travelling on the highway. Work to manufacture the concrete segments will start in late May 2019 and take about two years to complete.

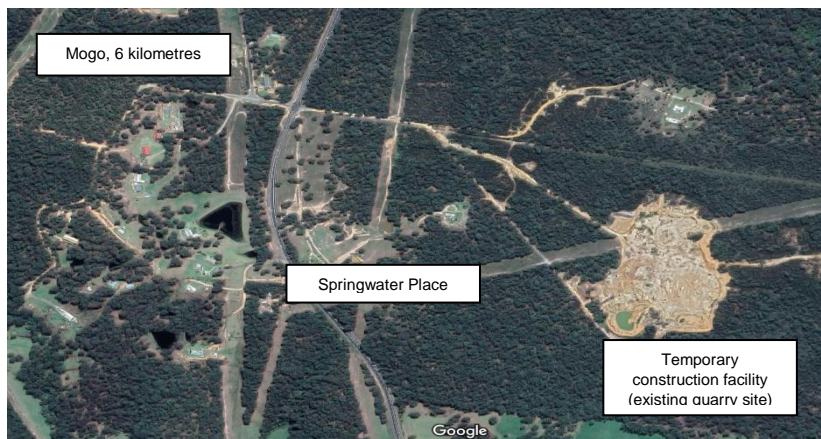
We will make every effort to minimise impacts to nearby residents by using low impact machinery where possible and turning off machinery when not in use, completing the noisiest work at appropriate times, minimising heavy vehicle traffic during peak and school travel periods, maintaining access to residential properties at all times and regularly assessing and monitoring noise and vibration impacts.

Traffic changes

Extra trucks will be turning at the intersection of the Princes Highway and Springwater Place and you may see some changes to traffic conditions in this location.

For the safety of workers and motorists, escort vehicles will be used to transport oversized concrete items from the temporary facility to Batemans Bay Bridge construction site.

Please keep to speed limits and follow the direction of traffic controllers and signs. For the latest traffic updates, you can call 132 701, visit livetraffic.com or download the Live Traffic NSW App.



Aerial view of site area



Concrete segments used on other Roads and Maritime projects

For more information

For more information on the project or if you have any questions, please contact our project team

 1800 879 119

 BatemansBayBridge@JHG.com.au

 rms.nsw.gov.au/BatemansBayBridge



If you need help understanding this information, please contact the Translating and Interpreting Service on 131 450 and ask them to call us on 1800 870 119.