



**November 2012    Edition 12**

**In this issue**

- NSW Linear Reserve Environmental Management Forum
- Grant funding available for NSW Council's Roadside Vegetation Projects
- Unsealed Roads Maintenance Field Guide
- Spot the new SREA Signage
- Lachlan CMA's Local Government Program Roadside Management Project
- Local Land Services
- National Wildlife Corridors Plan

---

**NSW Linear Reserve Environmental Management Forum**

The NSW Roadside Environment Committee (REC) hosted the NSW Linear Reserve Environmental Management Forum in Sydney on Tuesday 30 October 2012 at the Australian National Maritime Museum, Darling Harbour, Sydney. The forum provided an opportunity for land managers and other interested people to learn and discuss operational and strategic issues facing linear reserves in NSW.



*Participants discuss workshop scenarios at the forum  
(Photo: K. McIntyre)*

Eighty participants attended the forum with presentations covering the importance of linear reserve environments, the Great Eastern Ranges Initiative, as well as best practices in roadside environmental management. Workshop sessions focused on ways to manage competing and complex issues.

---

**Grant funding available for NSW Council's Roadside Vegetation Projects**

The Local Government and Shires Associations of NSW (LGSA) have been funded by the NSW Environmental Trust for another round of the Roadside Vegetation Implementation Project (RVIP) which provides funding to NSW councils to undertake priority roadside vegetation management works.

Projects to be funded must be identified as priority works through council's Roadside Vegetation Management Plan (RVMP), or other equivalent approved NSW council plan. More details on eligible projects are available in the RVIP -

---

Guideline for Applicants available on the LGSA website:  
<http://www.lgsa.org.au/policy/roadside-vegetation-implementation-project>.

This round of funding is targeted towards councils who did not receive funding in the first round.

### **Individual Projects - NOW OPEN**

A total of **\$695,000** will be available to NSW councils. Projects can be for a period of up to 12 months and must commence by 31 March 2013. Individual councils may apply for grants of up to \$50,000. Two or more councils may wish to also apply through this component of the RVIP however these grants are limited to \$50,000 per project.

### **Regional projects – TO COME SOON**

This round of funding includes an allocation of **\$250,000** for regional projects to coordinate roadside vegetation management activities across a number of councils in their region in collaboration with the CMA. Priority regions include: Murray, Murrumbidgee, Lachlan and Central West. These regions will be encouraged to submit an Expression of Interest (EOI) for their region which will be assessed prior to progressing to a full application. Details on this process soon to be available.

Application forms and more detail on applying for a grant will be available at:  
<http://www.lgsa.org.au/policy/roadside-vegetation-implementation-project>

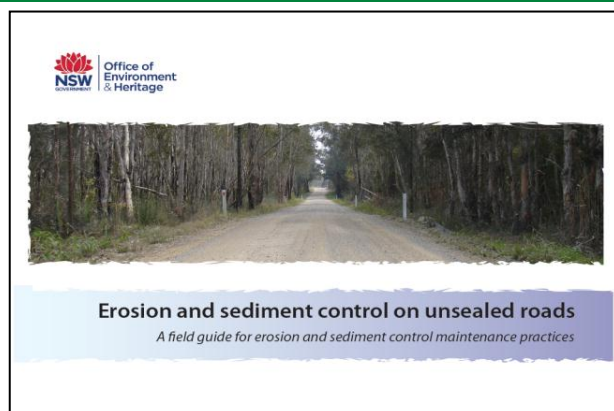
Applications are due by **Monday 17 December 2012**.

For more information contact: [Kirsty.mcintyre@lgsa.org.au](mailto:Kirsty.mcintyre@lgsa.org.au) or on 9242 4055.

---

## **Unsealed Roads Maintenance Field Guide**

---



In August the NSW Office of Environment and Heritage (OEH) released a field guide on best practice erosion and sediment control maintenance practices for unsealed roads. The field guide has been published to support organisations that wish to implement practices that reduce long-term maintenance costs and the impact of unsealed roads on the environment.

The guide provides operators and contractors with practical, hands-on guidance for soil and sediment control practices that improve asset management and minimise the amount of sediment entering waterways.

The field guide is educational and advisory in nature with the principles and practices contained in the guide applicable to any unsealed road. It can be used as either a stand-alone resource or as part of an existing maintenance program. Site-specific and organisational requirements still prevail to meet the relevant operational, safety and environmental outcomes.

Long-term erosion and sedimentation from unsealed roads is inevitable but can

be minimised by following the field guide. Studies have demonstrated that stormwater runoff from unsealed roads can be a substantial source of sediment in surrounding bushland and waterways. This water pollution can have significant impacts such as siltation of river channels, infilling of wetlands, reduced light penetration reducing photosynthesis, and loss of habitat and spawning sites for gravel-bed dependent fish. This can produce flow-on effects through the food chain.

The field guide has been developed through extensive consultation with field staff and practitioners to help capture valuable knowledge and experience and ensure its relevance for users and is designed to be stored in field vehicles. The field guide is already in use across the NSW Park Estate by field staff and contractors.

Copies can be obtained by contacting the Environment Line (131 555) or online at <http://www.environment.nsw.gov.au/stormwater/publications.htm#unsealed>

For further information about the field guide please contact Anthony Pik, Technical Policy Advisor, OEH, at [Anthony.Pik@environment.nsw.gov.au](mailto:Anthony.Pik@environment.nsw.gov.au)

---

### Spot the new SREA Signage

The first of the signs using the new template for Significant Roadside Environment Areas (SREA) are beginning to appear across NSW. Uralla Shire Council has begun installing the signage in its Shire as part of its RVIP implementation.

The signage will identify high conservation sites to both the wider community, as well as to other service providers and users of the roadside reserve area across Uralla.

Have you seen one of these new signs in your local government area?

*Photo: Uralla Council's Thomas O'Connor, General Manager; Cr Isabel Strutt., Mayor; and Cr Stephen Powley with newly installed SREA signage*



For more information on SREA signage visit: <http://www.lgsa.org.au/policy/information-councils-roadside-vegetation-grants>

Copies of the template are available by contacting: [kirsty.mcintyre@lgsa.org.au](mailto:kirsty.mcintyre@lgsa.org.au)

---

### Lachlan CMA's Local Government Program Roadside Management Project

---

---

Lachlan CMA has been facilitating a co-ordinated approach to roadside environment management amongst local councils in the Catchment for several years. In 2009, Lachlan CMA facilitated the pooling of funds of seven councils to develop a Roadside Vegetation Management Plan (RVMP) Template for the region. This was developed by Geoff Cunningham, an expert in the vegetation of Western NSW.

From 2009 to 2011, councils in the Lachlan Catchment were funded to develop Biodiversity Strategies (audits of Council owned & managed land) to support Local Environment Plans and RVMP development. In the 2011/12 financial year, Blayney & Carrathool Councils were funded to complete phase 2 of the RVMPs (ID & Mapping).

Lachlan CMA also purchased Trimble GPS units with programmed vegetation ID drop down menus that are a prerequisite for councils (or their contracted consultants) to use in the assessment and mapping for the plans to create consistent RVMPs across the catchment with the use of the Cunningham Template.

The Lachlan CMA has also contracted Pat Connor to run a series of Roadside Management training workshops in conjunction with Mark Arrow and Allan Ryan (Senior Environmental Officers, Roads and Maritime Services) in the Catchment. The first workshop was held in Hillston for Hay, Cobar, Balranald & Carrathool Councils with Peter Milthorpe (co-author Plants of Western NSW) also presenting on the day.

The second round of Roadside Management Workshops was completed last month in Parkes and Cowra with workshops planned for Temora and Condobolin in November.

The Lachlan CMA has employed a consultant to develop an EOI and guidelines for consultants to complete plans for Weddin, Bland, Temora and Cowra Councils.

Further funding has been allocated in 2013 to fund the balance of Catchment councils (Upper Lachlan, Boorowa, Young & Forbes) to complete phase 2 of the Roadside Vegetation Management Plans (ID & Mapping).

2013/14 will see a third round of Roadside Environment training run throughout the Catchment with negotiations to include NSW Fisheries in the presentations.

In related news, the draft Lachlan Catchment Action Plan (CAP) is available for public exhibition from Monday 12th November to Friday 30th November 2012. To view the draft or to submit comments please see:

<http://www.lachlan.cma.nsw.gov.au/cap-2012/haveyoursay.aspx>

---

## **Local Land Services**

---

On Thursday 4 October, the NSW Minister for Primary Industries announced the transformation of the 13 Catchment Management Authorities (CMAs), 14 Livestock Health and Pest Authorities (LHPAs) and agricultural services provided by Agriculture NSW into Local Land Services. Local Land Services will be regionally-based, semi-autonomous, statutory organisations, which are governed by locally elected and skills-based Board members.

---

The key functions of the new Local Land Services will include: agricultural industry advice; animal and plant pest control and biosecurity; catchment planning and management; and, emergency assessment and response.

The NSW Natural Resources Commissioner Dr John Keniry will Chair a Reference Panel to oversee the construction of the new Local Land Services which will be operational in January 2014.

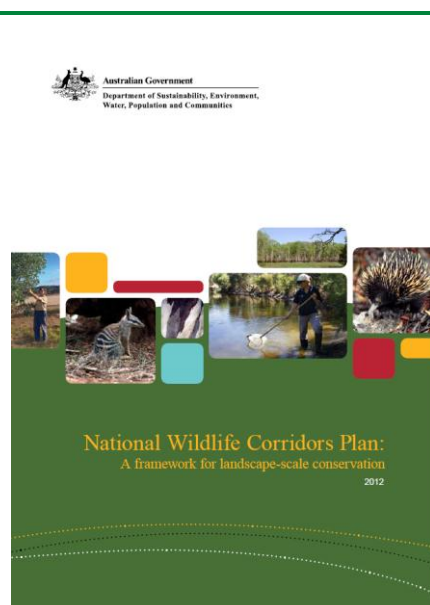
There have already been structural changes for some CMAs with the Lower Murray Darling CMA divided between Murray CMA and Western CMA and Sydney Metropolitan CMA merged with Hawkesbury-Nepean CMA.

Further information and an opportunity to provide feedback are available at <http://www.dpi.nsw.gov.au/locallandservices>

---

## National Wildlife Corridors Plan

---



The Commonwealth Government has just released the National Wildlife Corridors Plan. The Plan is the Australian Government's framework to retain, restore and manage ecological connections in the Australian landscape. It lays the foundation for a new, collaborative, whole-of-landscape approach to biodiversity conservation, one based on voluntary cooperation and the efforts of communities, landholders, governments and industry.

The Plan will allow conservation groups to nominate a corridor project to the government. The projects will then be assessed by an independent council and if successful will be declared by the Environment Minister as a national wildlife corridor.

The government has not nominated new projects under the plan nor allocated new funding for the corridors. Instead, it points to corridor efforts already under way by conservation groups and state government authorities – such as the Great Eastern Ranges Initiative - as potential projects to fall under the plan. Such projects may receive priority under existing funding schemes, including Caring for our Country and the Biodiversity Fund.

The Plan recognises the importance of linear reserves as important structural elements providing ecological connections across the landscape.

The National Wildlife Corridors Plan is available at <http://www.environment.gov.au/biodiversity/wildlife-corridors/index.html>

---

## Upcoming Workshops and Conferences

---

---

**The Australian Network for Plant Conservation (ANPC) has an upcoming workshop on the Restoration of Grassy Woodland Remnants:**

- 20 and 21 November 2012, Moree NSW

The two day workshop will provide participants with the skills required to plan, implement and monitor a project to manage and restore grassy woodland remnants.

Topics covered include:

- ecology of grassy woodlands
- weeds and weed management in grassy woodlands
- grassy woodland restoration – what do we know?
- grazing for biodiversity
- planning a management and restoration project
- flora identification skills
- identifying the natural values of a site and its threats
- identifying vegetation community type
- vegetation monitoring techniques
- where to get help including an overview of funding opportunities

*For more information on this and other ANPC workshops please visit the ANPC website [www.anpc.asn.au](http://www.anpc.asn.au) and click on courses and workshops or call the ANPC office on 02 6250 9509.*

---

*The aim of this newsletter is to share information about the management of NSW linear reserve environments and profile the NSW Roadside Environment Committee (REC). For more information on the REC, including how to create roadside vegetation management plans, go to: [www.rta.nsw.gov.au/rec](http://www.rta.nsw.gov.au/rec)*

*If you would like to subscribe or unsubscribe from this mailing list please contact [jkelleway@molinstewart.com.au](mailto:jkelleway@molinstewart.com.au)*



For more information contact:

**Neil Dufty - Executive Officer - (02) 9354 0300**

[ndufty@molinstewart.com.au](mailto:ndufty@molinstewart.com.au)