

Project		Nelligen Bridge Replacement				
EPL Number		21127				
EPL Link		https://apps.epa.nsw.gov.au/prpoeoapp/ViewPOEOLicence.aspx?DOCID=144673&SYSUID=1&LICID=21127				
Licensee name		Roads and Maritime Services				
Licensee's address of premises		Kings Highway Bridge over the Clyde River at Nelligen, Nelligen NSW 2536				
Monitoring period		January 2019				
Date Published	08/02/2019	Monitoring frequency required by licence	Special Frequency 1			
Note: Special frequency 1 means monthly and daily during discharge from sediment basin						
Sampling point	Date sampled	Date obtained	Pollutant	Measurement	Limit	Units of measure
1. Basin Spillway	No discharge from basin during reporting period.	No discharge from basin during reporting period.	Total suspended solids	-	50	mg/L
			pH	-	7.00-8.5	pH unit
			Oil and grease	-	Not visible	Visible
			Conductivity	-	-	Microsiemens per metre
			Turbidity	-	-	Nephelometric turbidity units
2. Upstream water quality monitoring point	22/01/19	22/01/19	Total suspended solids	4	50	mg/L
			pH	7.86	7.00-8.5	pH unit
			Oil and grease	Not visible	Not visible	Visible
			Conductivity	3600000	-	Microsiemens per metre
			Turbidity	0.9	-	nephelometric turbidity units
3. Downstream water quality monitoring point	22/01/19	22/01/19	Total suspended solids	6	50	mg/L
			pH	7.93	7.00-8.5	pH unit
			Oil and grease	Not Visible	Not visible	Visible
			Conductivity	3680000	-	Microsiemens per metre
			Turbidity	1.2	-	nephelometric

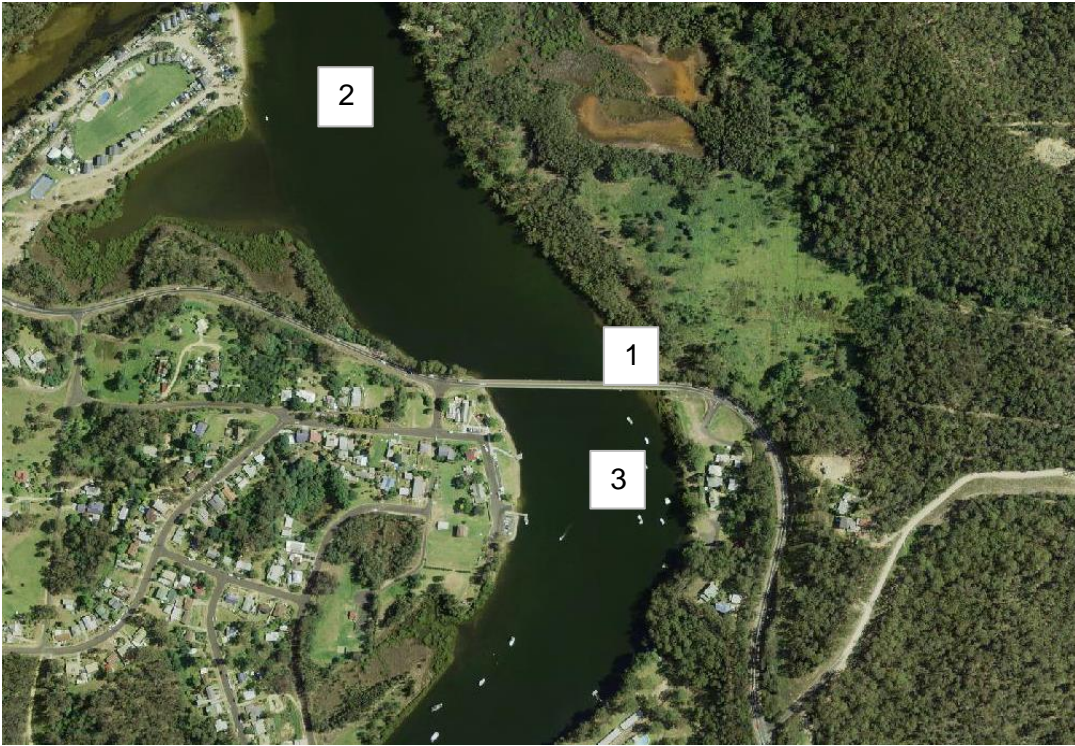


Figure 1 Monthly monitoring sampling locations.