

Project		Nelligen Bridge Replacement				
EPL Number		21127				
EPL Link		https://apps.epa.nsw.gov.au/prpoeoapp/ViewPOEOLicence.aspx?DOCID=144673&SYSUID=1&LICID=21127				
Licensee name		Roads and Maritime Services				
Licensee's address of premises		Kings Highway Bridge over the Clyde River at Nelligen, Nelligen NSW 2536				
Monitoring period		February 2019				
Date Published	21/02/2019	Monitoring frequency required by license.	Special Frequency 1			
Note: Special frequency 1 means monthly and daily during discharge from sediment basin						
Sampling point	Date sampled	Date obtained	Pollutant	Measurement	Limit	Units of measure
1. Basin Spillway	No discharge from basin during reporting period	No discharge from basin during reporting period	Total suspended solids	-	50	mg/L
			pH	-	7.00-8.5	pH unit
			Oil and grease	-	Not visible	Visible
			Conductivity	-	-	Microsiemens per metre
			Turbidity	-	-	Nephelometric turbidity units
2. Upstream water quality monitoring point	05/02/19	18/02/19	Total suspended solids	6	50	mg/L
			pH	7.64	7.00-8.5	pH unit
			Oil and grease	Not Visible	Not visible	Visible
			Conductivity	3560000	-	Microsiemens per metre
			Turbidity	1.55	-	nephelometric turbidity units
3. Downstream water quality monitoring point	05/02/19	18/02/19	Total suspended solids	2	50	mg/L
			pH	7.86	7.00-8.5	pH unit
			Oil and grease	Not Visible	Not visible	Visible
			Conductivity	3760000	-	Microsiemens per metre

			Turbidity	1.2	-	nephelometric turbidity units
--	--	--	-----------	-----	---	-------------------------------

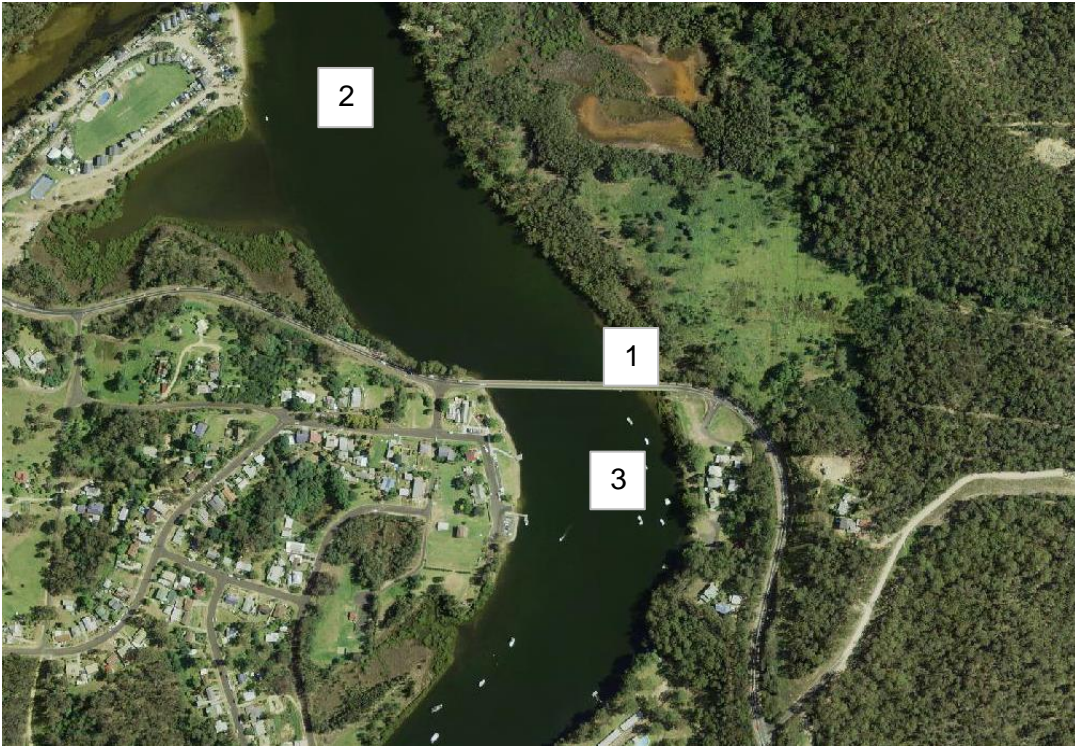


Figure 1 Monthly monitoring sampling locations.