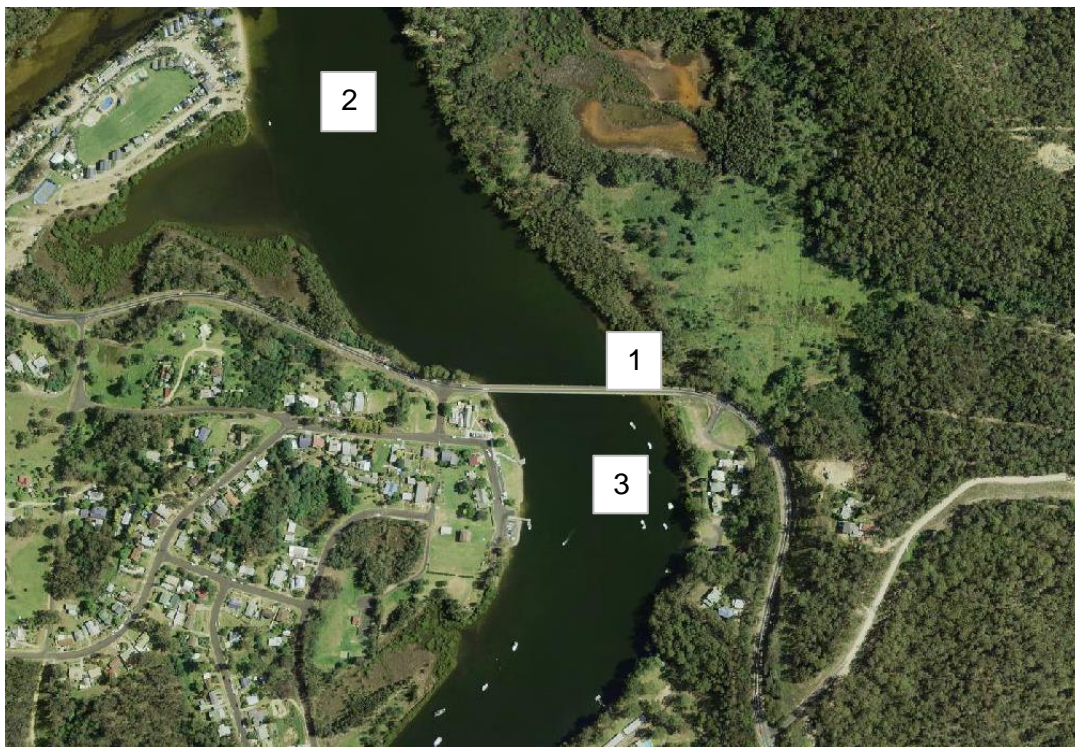


Project		Nelligen Bridge Replacement			
EPL Number		21127			
EPL Link		<a href="https://apps.epa.nsw.gov.au/prpoeoapp/ViewPOEOLicence.aspx?DOCID=144673&amp;SYSUID=1&amp;LICID=21127">https://apps.epa.nsw.gov.au/prpoeoapp/ViewPOEOLicence.aspx?DOCID=144673&amp;SYSUID=1&amp;LICID=21127</a>			
Licensee name		Roads and Maritime Services			
Licensee's address of premises		Kings Highway Bridge over the Clyde River at Nelligen, Nelligen NSW 2536			
Monitoring period		April 2019			
Date Published	02/05/2019	Monitoring frequency required by license.	Special Frequency 1		
Note: Special frequency 1 means monthly and daily during discharge from sediment basin					
Sampling point	Date sampled	Pollutant	Measurement	Limit	Units of measure
1. Basin Spillway	No discharge from basin during reporting period	Total suspended solids	-	50	mg/L
		pH	-	7.00-8.5	pH unit
		Oil and grease	-	None visible	Visible
		Conductivity	-	-	Microsiemens per metre
		Turbidity	-	-	Nephelometric turbidity units
2. Upstream water quality monitoring point	30/04/2019	Total suspended solids	<2	50	mg/L
		pH	7.72	7.00-8.5	pH unit
		Oil and grease	None visible	None visible	Visible
		Conductivity	3720000	-	Microsiemens per metre
		Turbidity	4.0	-	nephelometric turbidity units
3. Downstream water quality monitoring point	30/04/2019	Total suspended solids	3	50	mg/L
		pH	7.76	7.00-8.5	pH unit
		Oil and grease	None visible	None visible	Visible
		Conductivity	3800000	-	Microsiemens per metre
		Turbidity	4.6	-	nephelometric turbidity units



**Figure 1 Monthly monitoring sampling locations.**

\*Due to unforeseen circumstances the samples could only be taken on 30 April 2019. The results from the laboratory testing for TSS were included on this document on 07 May 2019.