

R6 (TYP)

3 HOLES  $\varnothing 15$

NOTES

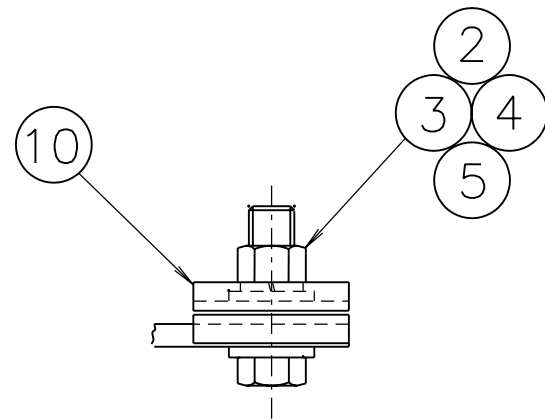
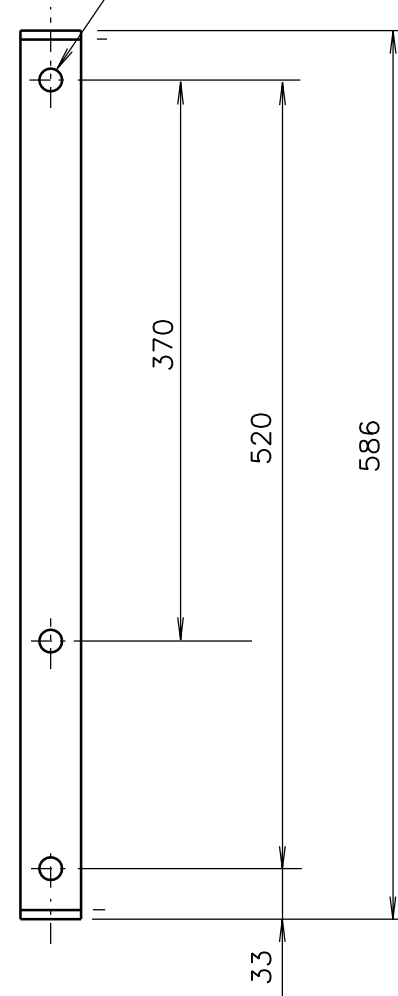
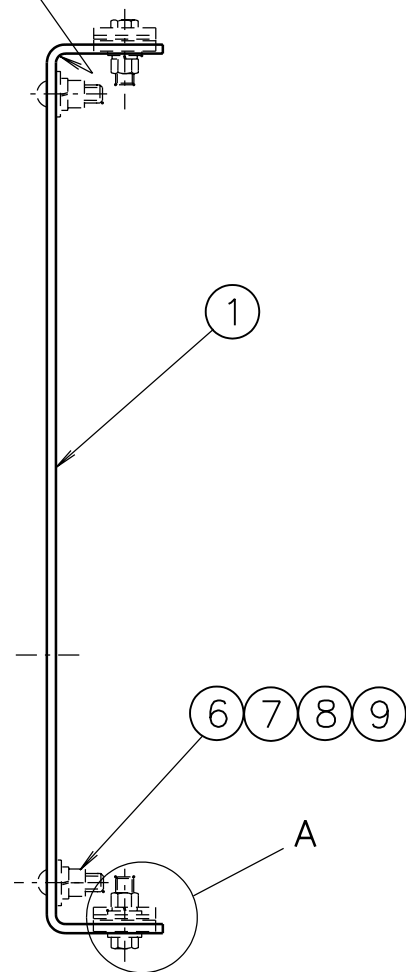
1. TOLERANCE OF ALL DIMENSIONS UNLESS OTHERWISE INDICATED:

- UP TO AND INCLUDING 100mm TO BE  $\pm 0.5\text{mm}$ .
- OVER 100mm TO BE  $\pm 1\text{mm}$ .
- ANGULAR TOLERANCE  $\pm 1^\circ$ .

TOLERANCE OF THE FLAT STEEL OF BRACKET TO COMPLY WITH AS 3679.

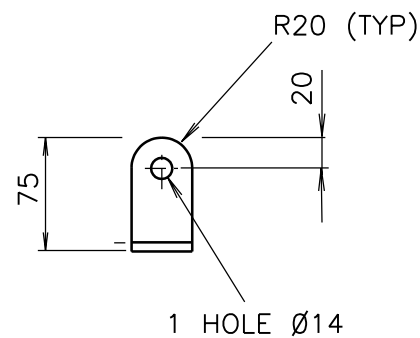
2. ALL BURRS, SHARP EDGES AND WELDING SCALE TO BE REMOVED BEFORE GALVANISING.
3. ALL WELDS TO BE CONTINUOUS FILLET IN ACCORDANCE WITH AS 1554 PART 1.
4. BRACKET TO BE HOT DIP GALVANISED IN ACCORDANCE WITH AS 1650.
5. ITEMS 2 TO 10 TO BE SUPPLIED FULLY ASSEMBLED AS SHOWN.
6. A PAIR OF LOCK WASHERS (ITEM 10) SHALL BE FITTED TO EACH LUG ASSEMBLY (DIMPLE TO DIMPLE).

LOCK WASHERS ARE TO BE MANUFACTURED TO RTA PLAN VM200-24 AND MAY BE OBTAINED FROM BOB PANICH CONSULTANCY (RYDE) OR ALDRIDGE TRAFFIC SYSTEMS PTY LTD (RHODES).

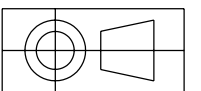


DETAIL A

1 : 2



DIMENSIONS ARE IN MILLIMETRES



| ITEM | DESCRIPTION                                   | MATERIAL        | FINISH          | QTY     |
|------|---|-----------------|-----------------|---------|
| 10   | LOCK WASHER REFER PLAN VM200-24               | STAINLESS STEEL | NATURAL         | 4       |
| 9    | HEX NUT M10 TO AS 1112                        | MILD STEEL      | GALV TO AS 1214 | 2       |
| 8    | SPRING WASHER M10 TO AS 1968                  | SPRING STEEL    | GALV TO AS 1650 | 2       |
| 7    | FLAT WASHER M10 LARGE SERIES TO AS 1237       | MILD STEEL      | GALV TO AS 1650 | 2       |
| 6    | CUP HEAD SQUARE NECK BOLT M10 X 30 TO AS 1390 | MILD STEEL      | GALV TO AS 1650 | 2       |
| 5    | HEX NUT M12 TO AS 1112                        | MILD STEEL      | GALV TO AS 1214 | 2       |
| 4    | SPRING WASHER M12 TO AS 1968                  | SPRING STEEL    | GALV TO AS 1650 | 2       |
| 3    | FLAT WASHER M12 TO AS 1237                    | MILD STEEL      | GALV TO AS 1650 | 4       |
| 2    | HEX HD SCREW M12 x 40 TO AS 1111              | MILD STEEL      | GALV TO AS 1214 | 2       |
| 1    | BRACKET 40 x 6 FLAT TO AS 3679                | MILD STEEL      | GALV TO AS 1650 | TO SUIT |

|   |                           |   |   |  |  |          |
|---|---------------------------|---|---|--|--|----------|
| A ORIGINAL ISSUE<br>B ISSUE 28-10-98<br>JI TC2961 ITEM 10<br>& NOTE 6 ADDED.<br>RVC BWT | SUPPLY CAT NO<br>35026704 | REFERENCE DRAWINGS<br>BKT SINGLE SMALL VT006-51<br>BKT SINGLE LARGE VT006-52<br>BKT DOUBLE MEDIUM VT006-54<br>BKT DOUBLE LARGE VT006-55<br>LOCK WASHER VM200-24 | ROADS AND TRAFFIC AUTHORITY OF NSW<br>TRAFFIC SIGNALS | SCALE<br>1 : 5<br>UNLESS SHOWN OTHERWISE   | APPROVED: 15-09-98<br>T YUNG<br>MGR STANDARDS & QUALITY                |          |
|   |                           | BRACKET DOUBLE MOUNTING (SMALL)<br>FOR SMALL SIGNS TO MATCH PEDESTRIAN<br>LANTERN MOUNTING LUG CENTRES OF 580mm   |   | SUPERSEDES: -                              | ISSUE <input checked="" type="checkbox"/> A <input type="checkbox"/> B |          |
|   |                           |   |   | DRAWN RVC 02-09-98<br>CHECKED BWT 10-09-98 | PASSED BRIAN TAYLOR<br>10-09-98  | VT006-53 |
|   |                           |   |   |  |  |          |