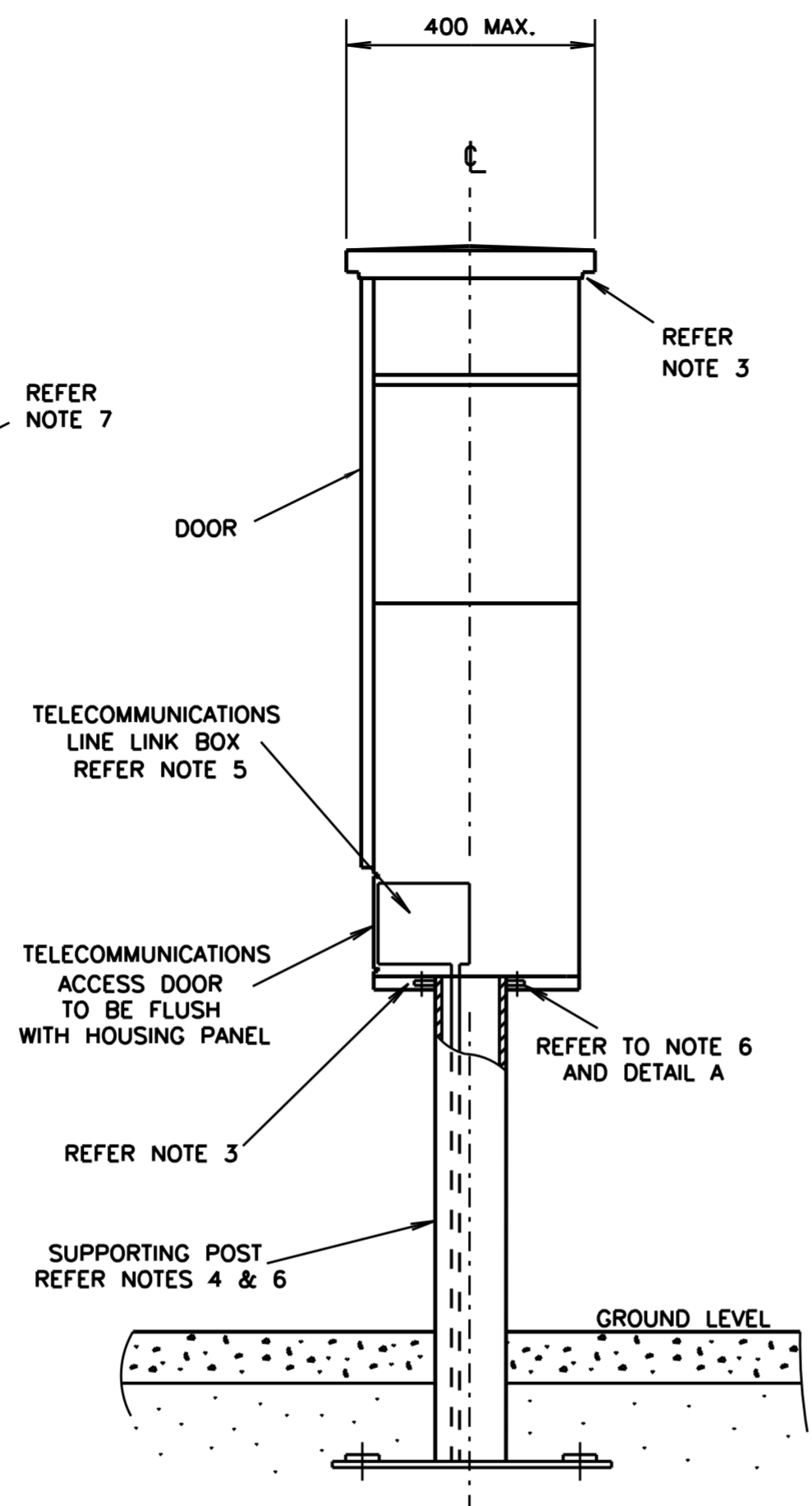
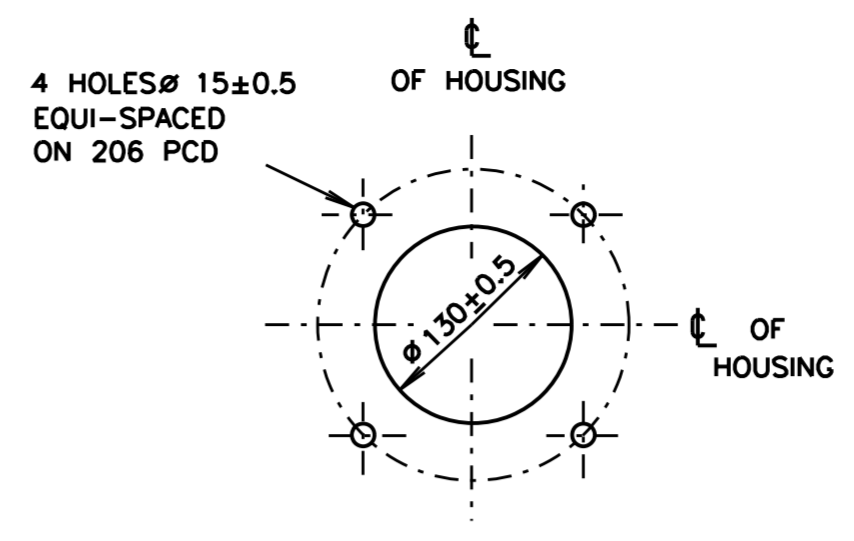


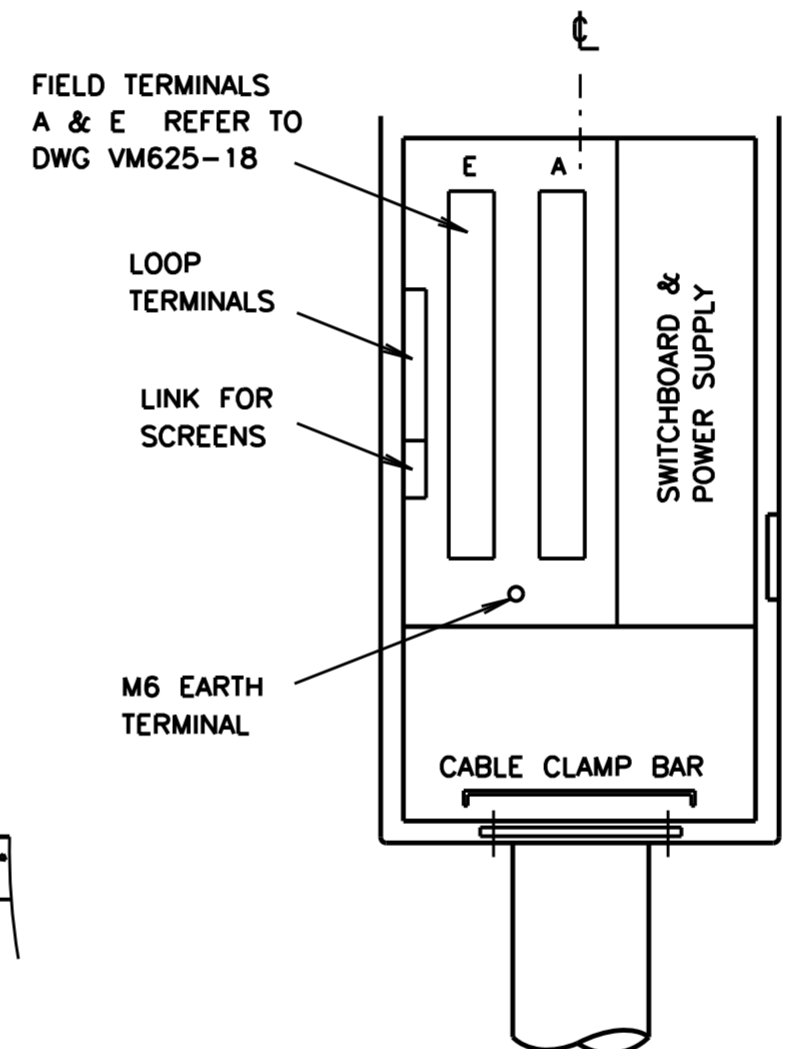
FRONT VIEW (DOOR OMITTED)
1:10



SIDE VIEW
(SIGNAL POST OMITTED)
1:10



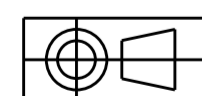
DETAIL 'A'
HOUSING BASE DRILLING DETAIL
1:5



DETAIL 'B'
LOCATION OF SWITCHBOARD,
POWER SUPPLY & FIELD TERMINALS
(NTS)

NOTES

1. ALL DIMENSIONS ARE IN MILLIMETRES.
2. THE WEATHERPROOF HOUSING SHALL HAVE FACILITIES FOR ATTACHMENT AT TWO POINTS TO A STANDARD TYPE 2 TRAFFIC SIGNAL POST. MOUNTING SHALL BE POSSIBLE ON EITHER SIDE OF THE HOUSING WITH HOLES PROVIDED AND SUITABLY PLUGGED.
3. SUFFICIENT VENTILATION SHALL BE PROVIDED REFER TO THE SPECIFICATION TSC/4.
4. SUPPORTING POST AS PER DRG. NO. VM623-2 (RTA CAT NO 18234165) SHALL BE SUPPLIED SEPARATELY.
5. THE TELECOMMUNICATIONS LINE LINK BOX SHALL BE MOUNTED ON THE CONTROLLER CHASSIS. FOR DETAILS REFER TO DWG. NO. VM621-32.
6. THIS DRAWING SHOWS THE POST SUPPORTED CONTROLLER ARRANGEMENT, BUT THE HOUSING CONSTRUCTION SHALL BE OF SUFFICIENT STRENGTH TO ENSURE RIGIDITY AND STABILITY WHEN THE CONTROLLER IS FREE STANDING.
7. SPACE REQUIRED FOR ACCOMMODATING EQUIPMENT AND TERMINALS FOR EIGHT (8) SIGNAL GROUPS. REFER TO SPECIFICATION TSC/4.
8. THE DOOR SHALL NOT NEED TO BE OPENED MORE THAN 90° TO GAIN FULL ACCESS TO INTERNAL EQUIPMENT.
9. BASE MOUNTING SCREWS INCLUDING NUTS, WASHERS AND SPRING WASHERS (HOUSING TO SUPPORTING POST) AS WELL AS ATTACHMENT BRACKETS AND U-BOLTS WITH NUTS, WASHERS AND SPRING WASHERS (FOR ATTACHMENT TO STANDARD TYPE 2 TRAFFIC SIGNAL POST) HAVE TO BE GALVANISED IN ACCORDANCE WITH AS1214 & AS1650 AS APPLICABLE, THESE ITEMS TOGETHER WITH THE CABLE CLAMP BAR, NEOPRENE SEAL & REINFORCING PLATE SHALL BE PACKED INTO ONE STRONG BAG AND TIED SECURELY TO THE INSIDE OF THE CONTROLLER HOUSING ON DELIVERY.
10. ALL INTERNAL CONNECTIONS TO BE ON THE RIGHT SIDE OF THE TERMINAL BLOCKS FOR BLOCK 'A' AND ON THE LEFT SIDE FOR BLOCK 'E'. REFER TO DWG VM625-18 FOR DETAILS OF THE TERMINAL LAYOUT DIAGRAM.
11. THE TWO EQUIPMENT SHELVES SHALL BE CLEAR OF THE SIDES OF THE HOUSING MIN. 30MM TO ALLOW FOR CABLING. THE FRONT OF THE SHELVES SHALL BE SUITABLY RECESSED INTO THE HOUSING TO ALLOW FOR FRONT CABLE CONNECTIONS TO DEVICES ON THE SHELVES.
12. THE BACK EDGE OF THE SHELVES TO BE FOLDED UP 10MM.
13. BOTH SHELVES SHALL HAVE A TOTAL AREA OF EVENLY DISTRIBUTED VENTILATION OPENINGS NOT LESS THAN 25% OF THE TOTAL SHELF AREA.
14. REFER TO SPECIFICATION TSC/4 FOR OTHER REQUIREMENTS.



A ORIGINAL ISSUE	11-01-1999 J/J TC2967 NOTE 10 ADDED. REF TO TELECOM REMOVED. RVC CH
B ISSUE	24-11-2014 PLAN UPDATED TO SUIT CURRENT STANDARDS. BWT. LC.
C ISSUE	12-02-2015 HOUSING DIMENSIONS REVISED TO SUIT CURRENT REQUIREMENTS. ALL BWT.
D ISSUE	28-04-2015 THE WORD 'TYPICAL' REMOVED FROM PLAN TITLE. BWT. LC.

REFERENCE DRAWINGS	DRAWN J.GRESHAM 1991-04-18
TERMINAL LAYOUT VM625-18	CHECKED B.T. 1993-02-01
SUPPORT POST VM623-2	PASSED B.TAYLOR 1993-02-01
CONCRETE BASE VC002-43	APPROVED
COMMS LINK VM621-32	F HULSCHER
	DATE 1993-02-01

ROADS AND TRAFFIC AUTHORITY NSW TRAFFIC SIGNALS	
OUTLINE & ARRANGEMENT FOR POST MOUNTED HOUSINGS	

SHEET SIZE A2	FILE NO	SCALE AS SHOWN	SHEET NO
SUPERSEDES VM625-1		ISSUE	A B C D E
REG NO		VM625-17	