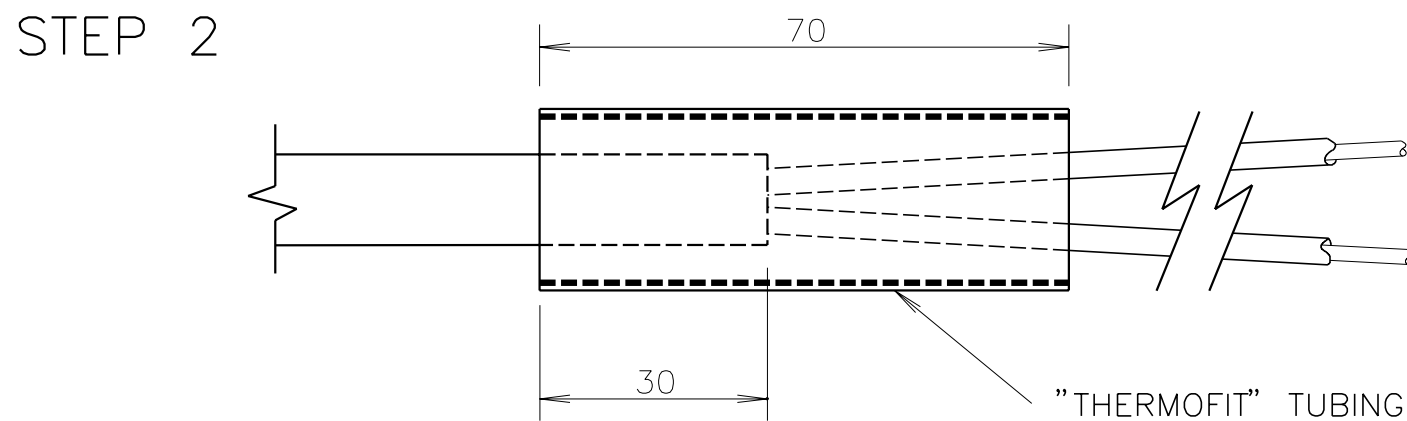
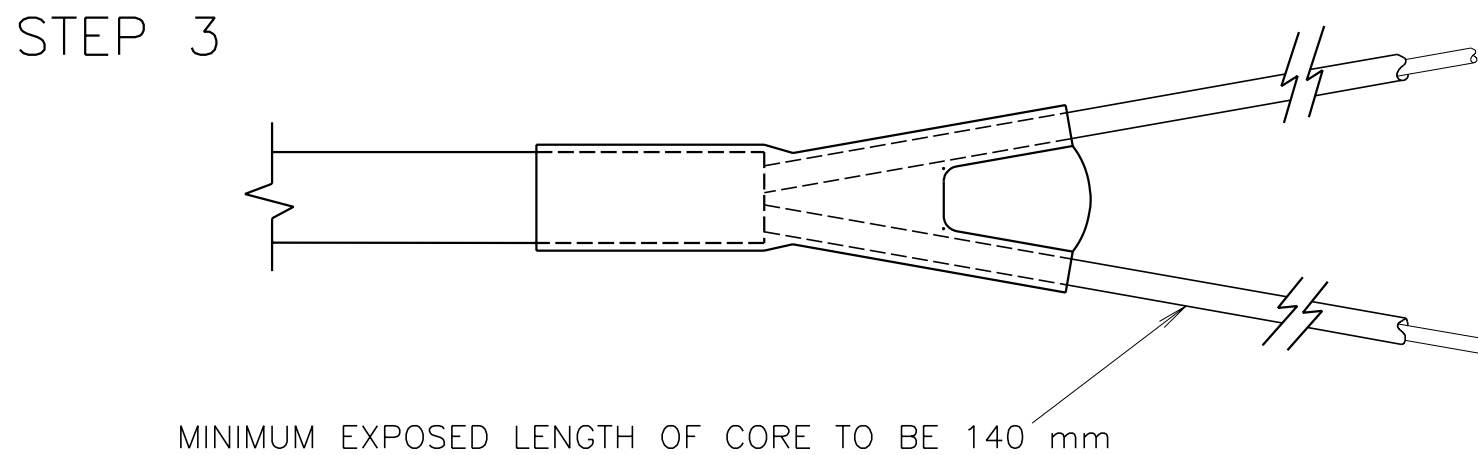


CUT BACK OUTER INSULATION AND METAL SCREEN AS REQUIRED TO REVEAL THE TWO CORES AND CLEAN WITH TRICHLOROETHANE CABLE CLEANING SOLUTION.



SLIP 70 mm LENGTH OF RAYCHEM "THERMOFIT" ATUM 19/6 OVER THE CRUTCH AREA OF THE CABLE.



APPLY HEAT BY CONSTANTLY MOVING OVER THE "THERMOFIT" TUBING SURFACE TO SHRINK AND CONFORM TUBING TO THE CABLE. WHILST THE TUBING IS STILL VERY HOT, THE CRUTCH AREA IS TO BE SPREAD AND NIPPED WITH A PAIR OF PLIERS TO FORM THE "WEB" BETWEEN THE TWO CONDUCTORS. CARE IS TO BE TAKEN NOT TO DAMAGE THE CABLE CORES AND THE INSULATION WHEN FORMING THE "WEB".

NOTE: THE ABOVE APPLICATION OF A "RAYCHEM ATUM SLEEVE" IS SHOWN AS A TYPICAL EXAMPLE. OTHER METHODS TO BE SUBJECTED TO PRIOR APPROVAL BY THE AUTHORITY.

D ISSUE 1993-05-13 J/1 TC2329 PLAN REDRAWN. ADDED MIN EXPOSED LENGTH OF CORE TO BE 140mm TO STEP 3. IJH BT	RTA SUPPLY CAT NO		REFERENCE DRAWINGS		ROADS AND TRAFFIC AUTHORITY OF NSW TRAFFIC SIGNALS	SCALE NTS		APPROVED: 1981-05-15 F.R.HULSCHER SUPERVISING ENGINEER	
	RAYCHEM THEROFIT ATUM 19/6	1823 1522	STOP LINE DETECTOR INSTALLATION	VC005-17		SUPERSEDES: ISSUE C		ISSUE	
			ADVANCE DETECTOR INSTALLATION	VC005-18	DRAWN JB 27-1-81		A D		
					CHECKED RB		VM417-4		
					PASSED 11-5-81 B.TAYLOR				