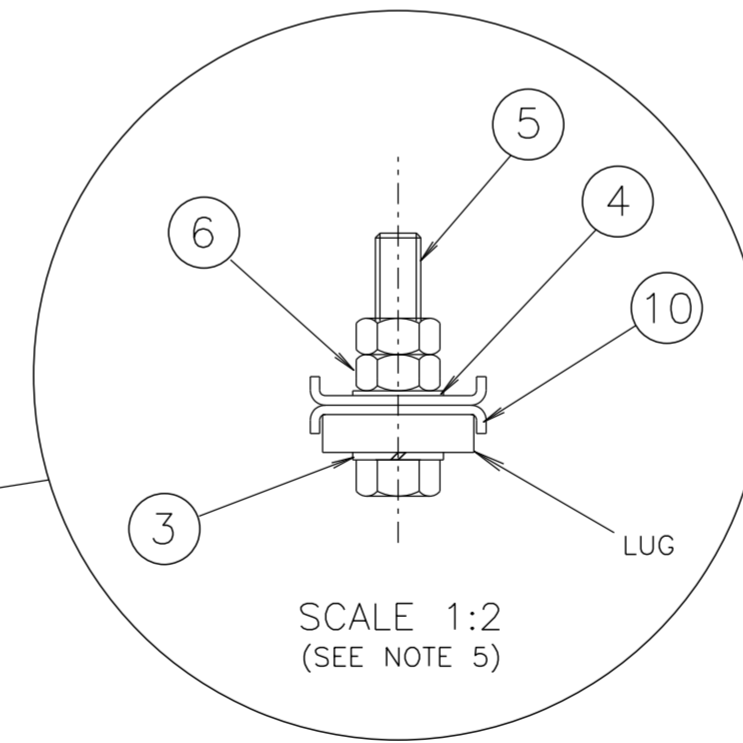
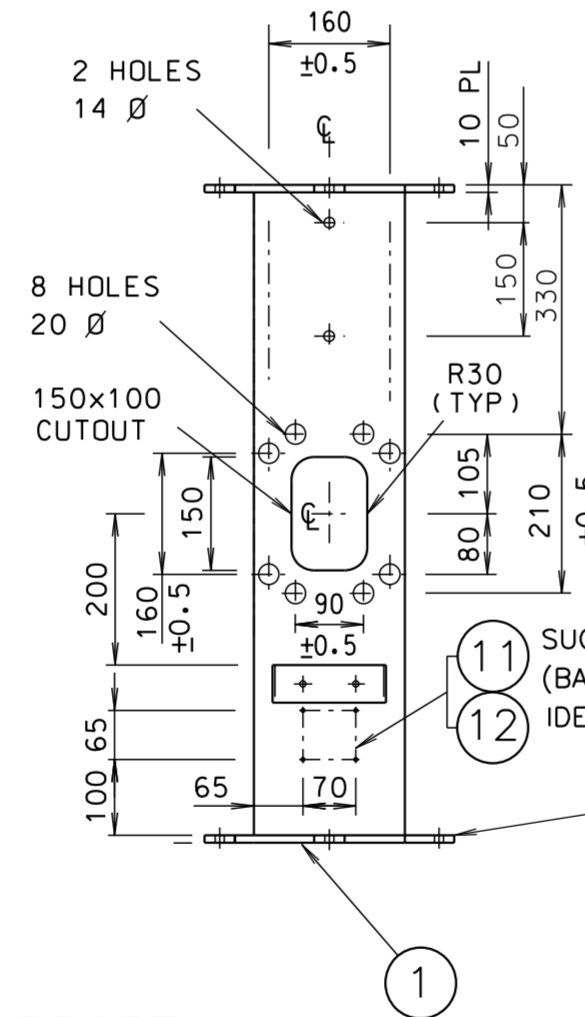
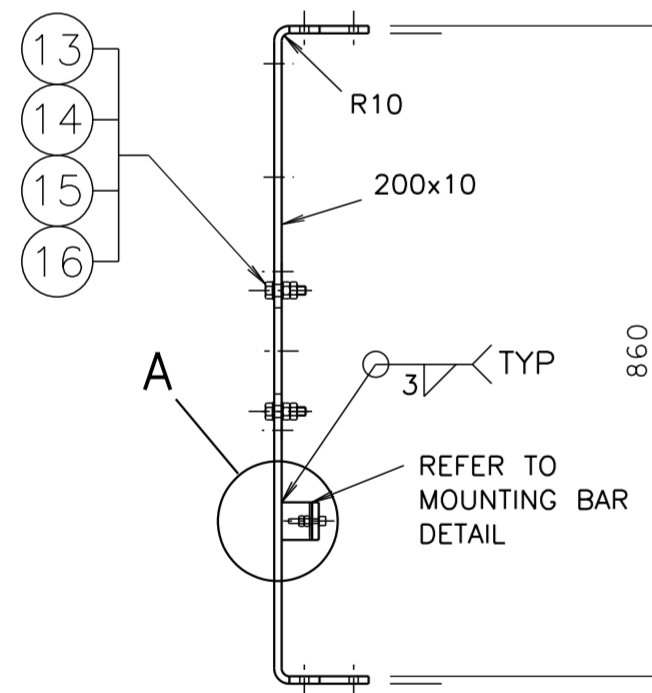


NOTES

- THE REQUIREMENTS OF SPECIFICATION MA/1 AND DRG ME10754 SHEET 7 SHALL BE APPLICABLE.
- REMOVE ALL SHARP EDGES, BURRS & WELDING SCALE BEFORE GALVANISING AND CLEAR ALL THREADS AFTER GALVANISING.
- ALL WELDS TO BE IN ACCORDANCE WITH AS/NZS 1554 PART 1.
- FINISH: HOT DIPPED GALVANISED IN ACCORDANCE WITH AS/NZS 4680.
- ITEMS 2 TO 16 TO BE SUPPLIED FULLY ASSEMBLED AS SHOWN BEFORE DELIVERY. ITEM 5 TO POINT UPWARDS IN ALL LUGS.
- TAPPED HOLES TO BE 90 ± 1° TO SURFACE OF LUG.
- TOLERANCE OF ALL POST DIMENSIONS UNLESS INDICATED OTHERWISE:
 - FOR SLOTS AND POSITION OF SLOT CENTRES: ± 0.5
 - FOR DIMENSIONS UP TO AND INCLUDING 300: ± 1
 - FOR DIMENSIONS OVER 300: ± 2
 - ANGULAR TOLERANCE: ± 1°
- TO FIT THE ID PLATE (ITEM 11) IN THE POSITION SHOWN ON THE LANTERN SUPPORT (ITEM 1), FIRST DRILL 4 HOLES USING DRILL No. 27, THEN GALVANISE ITEM 1 AND THEN AFFIX ID PLATE TO THE LANTERN SUPPORT USING HAMMER DRIVE SCREWS No. 8, 1/2 INCH LONG, ZINC PLATED.



ITEM	DESCRIPTION	MATERIAL	FINISH	QTY
16	WASHER, SPRING M16	SPRING STEEL	GALVANISED TO AS/NZS 1214	4
15	NUT HEX M16 TO AS/NZS 1112	MILD STEEL		8
14	WASHER, FLAT M16 TO AS 1237	MILD STEEL		8
13	SCREW HEX. HEAD M16x60 TO AS/NZS 1111	MILD STEEL	NATURAL	4
12	HAMMER DRIVE SCREWS No. 8, 1/2 INCH LONG	STAINLESS STEEL		4
11	IDENTIFICATION PLATE (REFER TO DRG No. VM215-5)	STAINLESS STEEL		1
10	LOCK WASHER (REFER TO DRG No. VM200-24)	STAINLESS STEEL		12
9	WASHER, FLAT M6 TO AS 1237	STAINLESS STEEL		2
8	WASHER, SPRING M6	STAINLESS STEEL		2
7	PAN HEAD PHILLIPS DRIVE SCREW, M6x40 TO AS 1237	STAINLESS STEEL	GALVANISED TO AS/NZS 1214	2
6	NUT, HEX M12 TO AS/NZS 1112	MILD STEEL		12
5	SCREW, HEX HEAD M12 x 60 TO AS/NZS 1111	MILD STEEL		6
4	WASHER, FLAT M12 TO AS 1237	MILD STEEL	GALVANISED TO AS/NZS 4680	6
3	WASHER, SPRING M12	SPRING STEEL		6
2	CABLE CLAMP (SEE DETAIL)	MILD STEEL	1	
1	LANTERN SUPPORT BRACKET	MILD STEEL	1	

DIMENSIONS ARE IN MILLIMETRES

A ORIGINAL ISSUE
 B ISSUE 08-05-13 PLAN REVISED FOR SUPPORT TO SUIT ALL MAST ARMS & MULTIFUNCTION POLES. BWT. LC.
 C ISSUE 19-11-13 2x14 DIA HOLES ADDED FOR CCTV CAMERA. BWT. LC.
 D ISSUE 17-03-2016 CABLE CLAMP MOUNTING BAR REVISED. ITEM 7 DELETED. ITEMS 8 TO 17 RENUMBERED TO 7 TO 16. ITEM 8 WAS CH OR PLAIN HEAD SCREW. DB BWT

CATALOGUE No.
1823 0439

REFERENCE DRAWINGS
 ID PLATE VM215-5
 GEN. MANUFACTURING NOTES & WELD DET'S CW8536
 LOCK WASHER VM200-24

DRAWN G.BRENNAN 22-07-04
 CHECKED B.TAYLOR 05-08-04
 PASSED B.TAYLOR 05-08-04
 APPROVED S.SRIVASTAVA
 DATE 10-08-04

ROADS AND MARITIME SERVICES
 TRAFFIC SIGNALS
 MECHANICAL DETAILS
 OF UPPER LANTERN SUPPORT
 TO SUIT 200mm LANTERNS ON
 MAST ARMS & MULTIFUNCTION POLES

SHEET SIZE A2
 FILE NO
 SCALE AS SHOWN
 SHEET NO
 SUPERSEDES
 REG NO
 ISSUE A B C D
 VM215-6