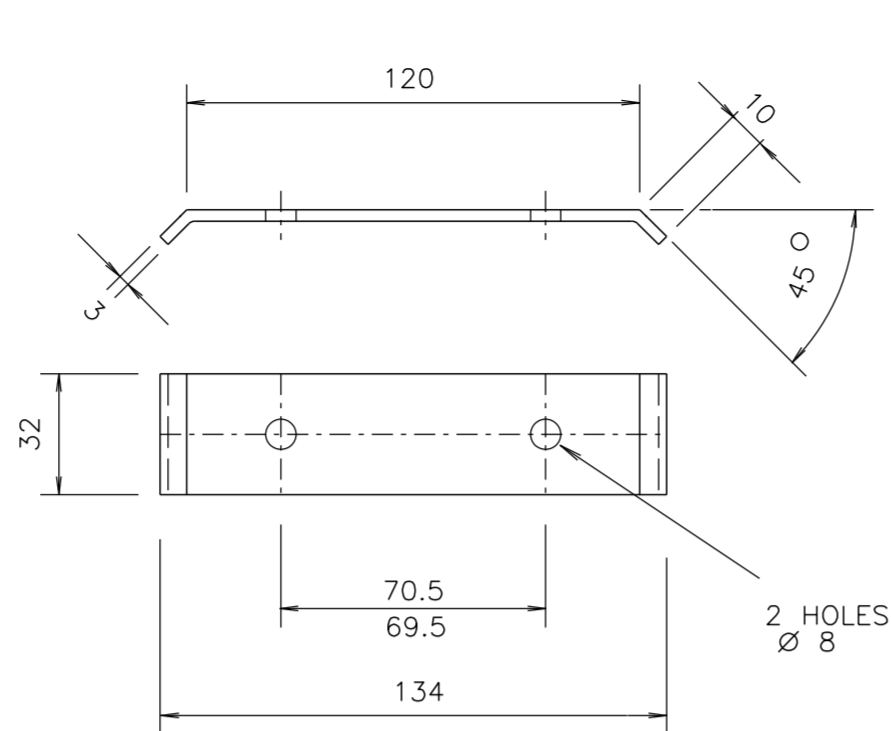
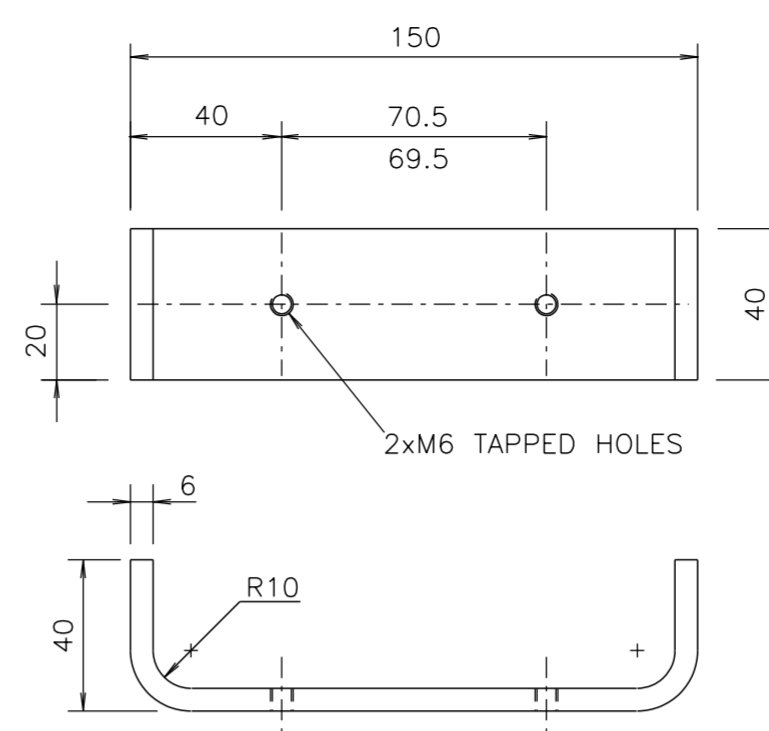


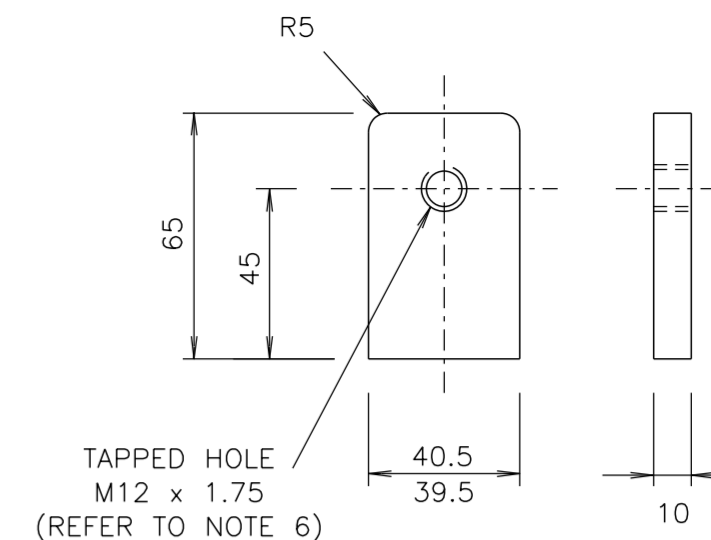
SIDE LUG DETAIL
(SCALE 1:2, QTY=2)



CABLE CLAMP DETAIL
ITEM 2 (SCALE 1:2)



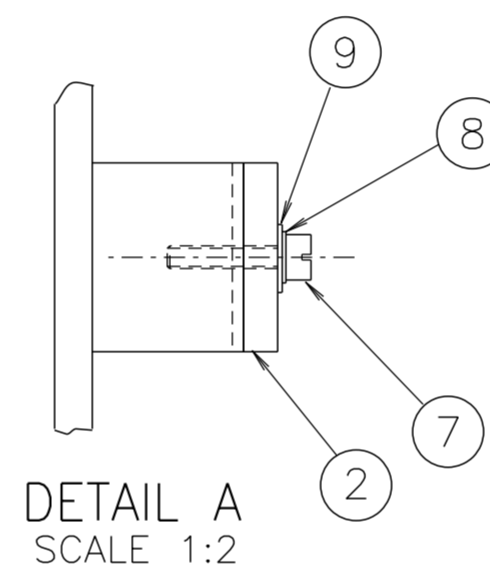
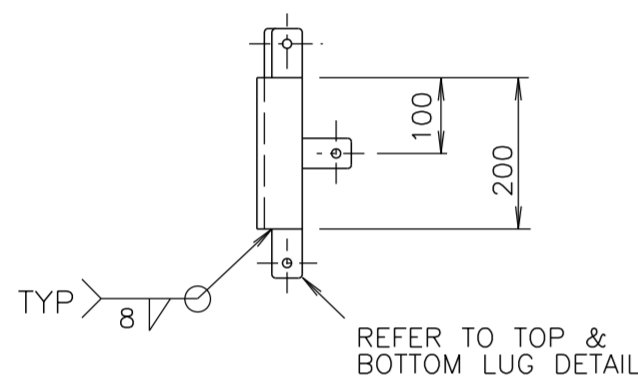
MOUNTING BAR
DETAIL
SCALE 1:2



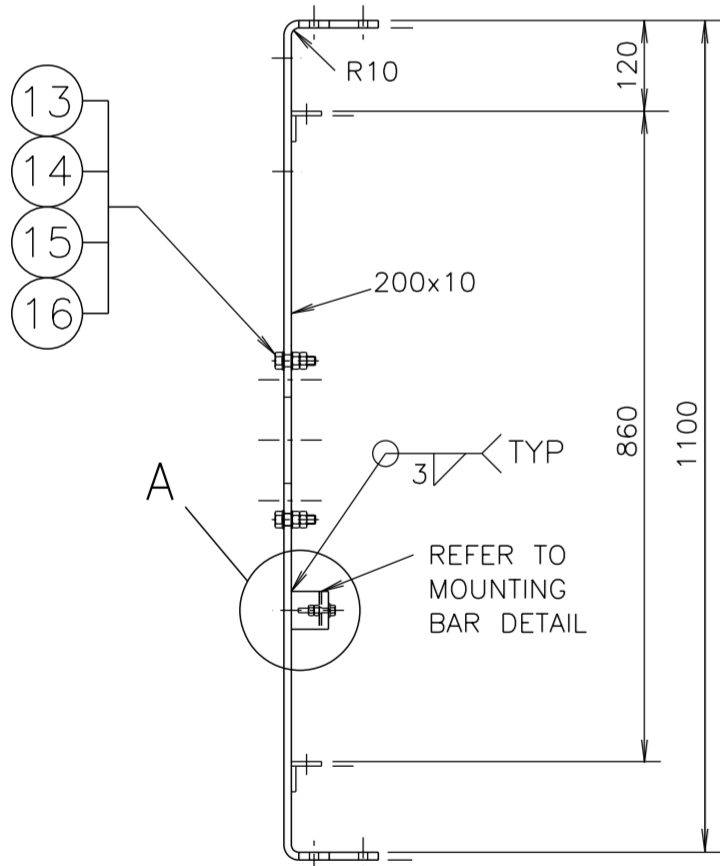
TOP & BOTTOM
LUG DETAIL
SCALE 1:2

NOTES

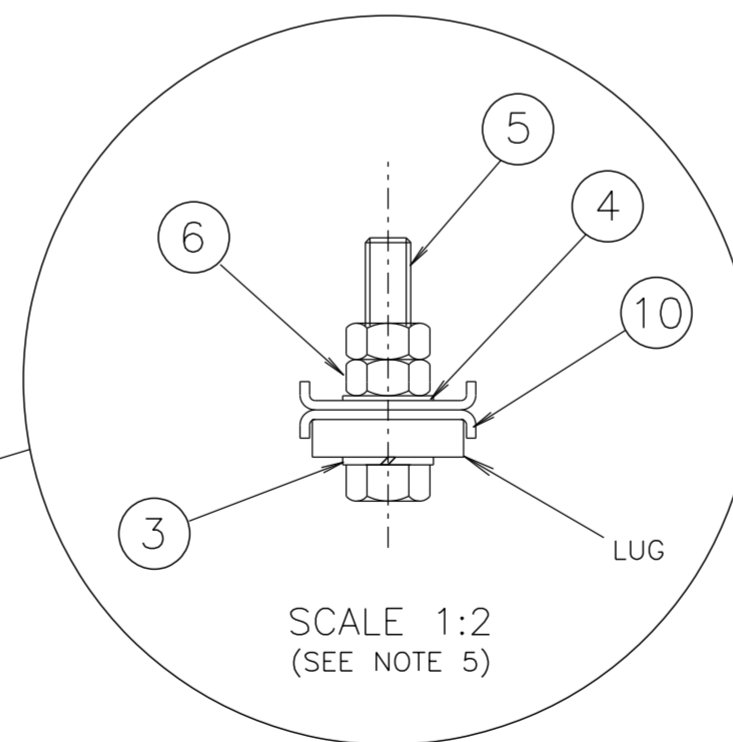
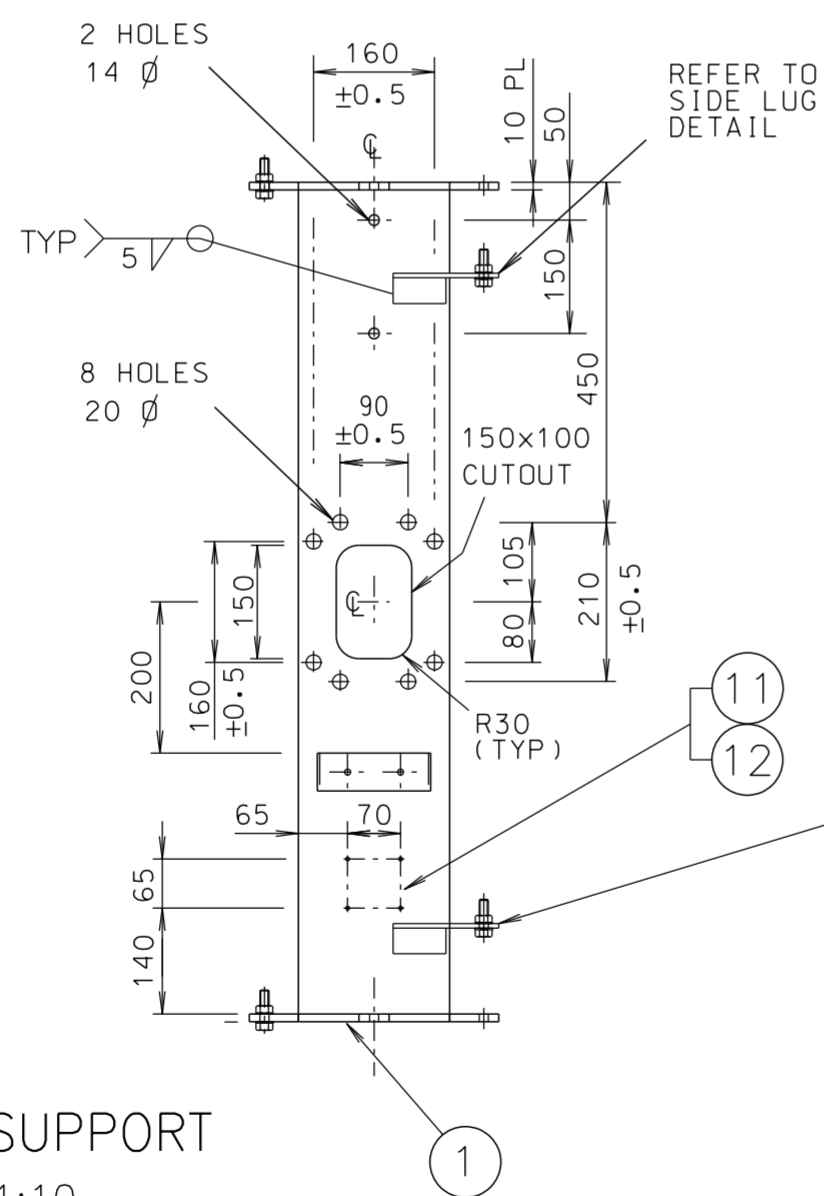
- THE REQUIREMENTS OF SPECIFICATION MA/1 AND DRG ME10754 SHEET 7 SHALL BE APPLICABLE.
- REMOVE ALL SHARP EDGES, BURRS & WELDING SCALE BEFORE GALVANISING AND CLEAR ALL THREADS AFTER GALVANISING.
- ALL WELDS TO BE IN ACCORDANCE WITH AS/NZS 1554 PART 1.
- FINISH: HOT DIPPED GALVANISED IN ACCORDANCE WITH AS/NZS 4680.
- ITEMS 2 TO 16 TO BE SUPPLIED FULLY ASSEMBLED AS SHOWN BEFORE DELIVERY. ITEM 5 TO POINT UPWARDS IN ALL LUGS.
- TAPPED HOLES TO BE $90 \pm 1^\circ$ TO SURFACE OF LUG.
- TOLERANCE OF ALL POST DIMENSIONS UNLESS INDICATED OTHERWISE:
 - FOR SLOTS AND POSITION OF SLOT CENTRES: ± 0.5
 - FOR DIMENSIONS UP TO AND INCLUDING 300: ± 1
 - FOR DIMENSIONS OVER 300: ± 2
 - ANGULAR TOLERANCE: $\pm 1^\circ$
- TO FIT THE ID PLATE (ITEM 11) IN THE POSITION SHOWN ON THE LANTERN SUPPORT (ITEM 1), FIRST DRILL 4 HOLES USING DRILL No. 27, THEN GALVANISE ITEM 1 AND THEN AFFIX ID PLATE TO THE LANTERN SUPPORT USING HAMMER DRIVE SCREWS No. 8, 1/2 INCH LONG, ZINC PLATED.



DETAIL A
SCALE 1:2



LANTERN SUPPORT
SCALE 1:10



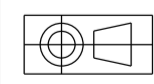
SCALE 1:2
(SEE NOTE 5)

ITEM	DESCRIPTION	MATERIAL	FINISH	QTY
16	WASHER, SPRING M16	SPRING STEEL		4
15	NUT HEX M16 TO AS/NZS 1112	MILD STEEL	GALVANISED TO AS/NZS 1214	8
14	WASHER, FLAT M16 TO AS 1237	MILD STEEL		8
13	SCREW HEX. HEAD M16x60 TO AS/NZS 1111	MILD STEEL		4
12	HAMMER DRIVE SCREWS No. 8, 1/2 INCH LONG	STAINLESS STEEL		4
11	IDENTIFICATION PLATE (REFER TO DRG No. VM215-5)	STAINLESS STEEL		1
10	LOCK WASHER (REFER TO DRG No. VM200-24)	STAINLESS STEEL		8
9	WASHER, FLAT M6 TO AS 1237	STAINLESS STEEL	NATURAL	2
8	WASHER, SPRING M6	STAINLESS STEEL		2
7	PAN HEAD PHILLIPS DRIVE SCREW, M6x40 TO AS 1237	STAINLESS STEEL		2
6	NUT, HEX M12 TO AS/NZS 1112	MILD STEEL	GALVANISED TO AS/NZS 1214	8
5	SCREW, HEX HEAD M12 x 60 TO AS/NZS 1111	MILD STEEL		4
4	WASHER, FLAT M12 TO AS 1237	MILD STEEL		4
3	WASHER, SPRING M12	SPRING STEEL	GALVANISED TO AS/NZS 4680	4
2	CABLE CLAMP (SEE DETAIL)	MILD STEEL		1
1	LANTERN SUPPORT BRACKET	MILD STEEL		1

ORIGINAL DESIGN BY
MECH ENGINEERING SECTION
52 ROTHSCHILD AVENUE
ROSEBERY NSW 2018
PHONE (02) 9662-5204
FACSIMILE (02) 9662-5411

ORIGINAL REFERENCES
MECHANICAL ENGINEERING SECTION
MES DWG ME10754 SH4 ISSUE E
DESIGN RTA CHECKED JE
DRAWING HA CHECKED JE
APPROVED RK 22-12-1998

Quality
Endorsed Company
ISO 9001
Lic. QEC 7443
Standards Australia



DIMENSIONS ARE IN MILLIMETRES

A ORIGINAL ISSUE
B ISSUE 19-04-10 TO SUIT 300mm LANTERNS ADDED TO PLAN TITLE. BWT LC
C ISSUE 04-09-12 2xSIDE LUGS ADDED. TOP & BOTTOM LUGS REDUCED. PLAN REVISED TO SUIT. BWT. LC.
D ISSUE 09-05-13 PLAN REVISED FOR SUPPORT TO SUIT ALL MAST ARMS & MF POLES. BWT. LC.
E ISSUE 18-11-13 2x14 DIA HOLES ADDED FOR CCTV. BWT. LC.
F ISSUE 17-03-2016 CABLE CLAMP MOUNTING BAR REVISED. ITEM 7 DELETED. ITEMS 8 TO 17 RENUMBERED TO 7 TO 16. ITEM 8 WAS CH OR PLAIN HEAD SCREW. DB BWT

CATALOGUE No.
1823 0438

REFERENCE DRAWINGS	DRAWN RVC 11-05-99
	CHECKED GD 20-2-2000 MECH ENGINEER SECTION
ID PLATE	VM215-5 PASSED BWT 17-2-2000
GEN. MANUFACTURING NOTES & WELD DET'S	CW8536 APPROVED
LOCK WASHER	VM200-24
	T. YUNG DATE 8-3-2000

ROADS AND MARITIME SERVICES
TRAFFIC SIGNALS

MECHANICAL DETAILS
OF UPPER LANTERN SUPPORT
TO SUIT 300mm LANTERNS ON
MAST ARMS & MULTIFUNCTION POLES

SHEET SIZE	FILE NO	SCALE	SHEET NO
A2		AS SHOWN	
SUPERSEDES ME10754 SH 4		ISSUE	A B C D E F
REG NO		VM215-4	