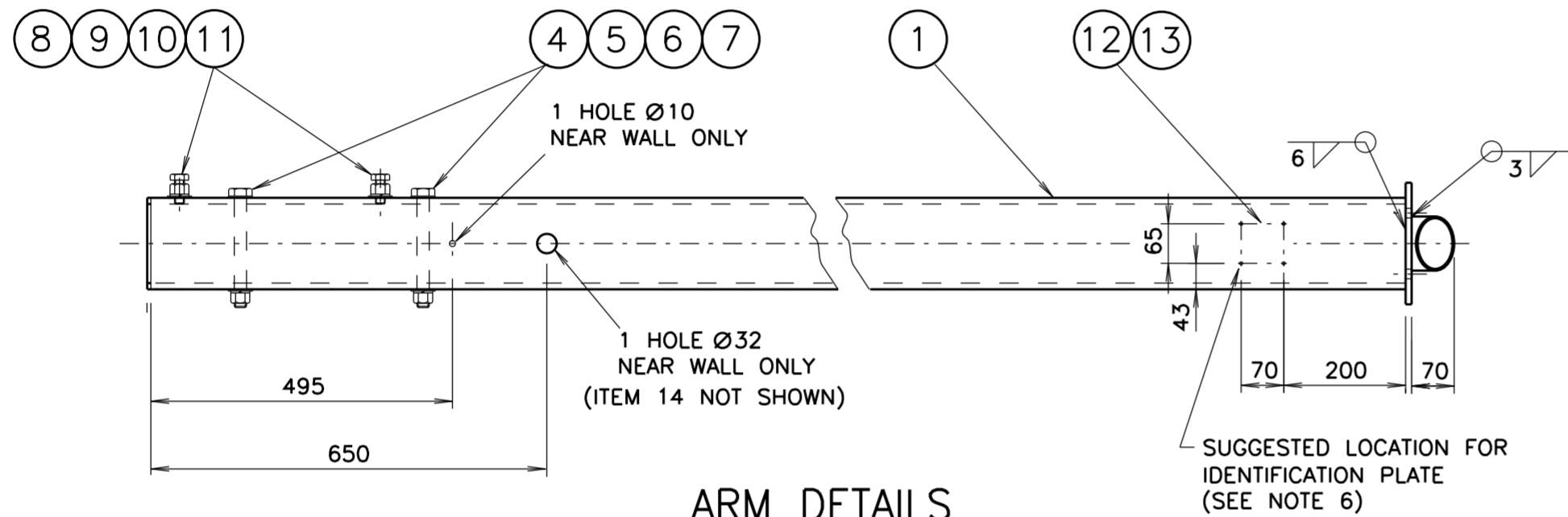


ARM DIMENSION (L)	CAT No.
1000	18233593
1500	18233594
2000	18233595
2500	18233596
3000	18233597
3500	18233598
4000	18233599
4500	18233600
5000	18233601
5500	18233602

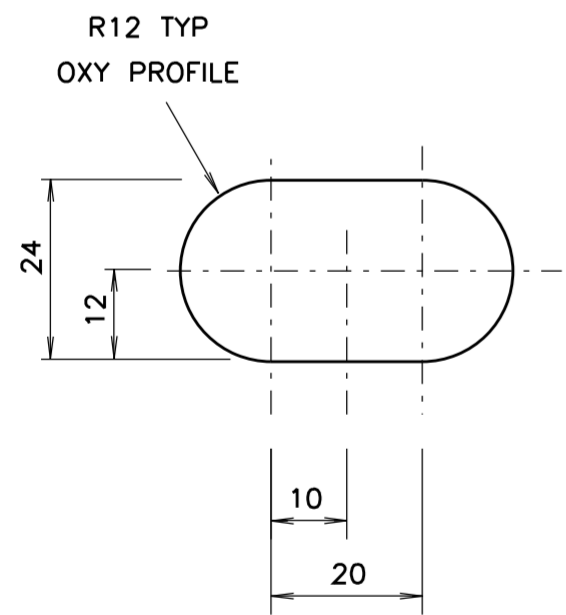
ARM LENGTH TABLE

NOTES

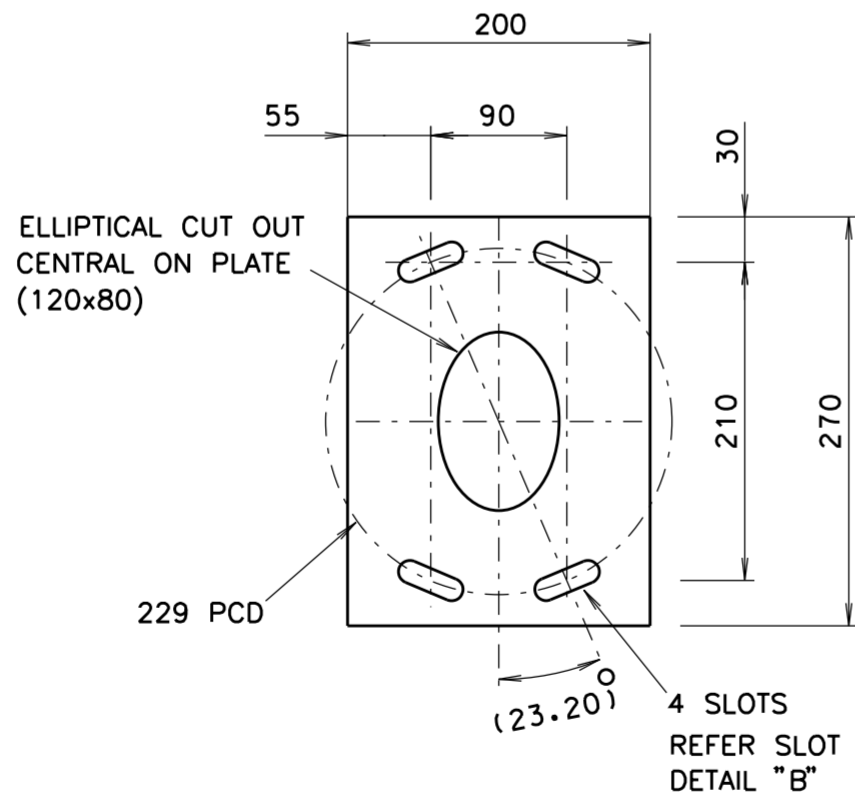
1. THE REQUIREMENTS OF SPECIFICATION MA/1 AND DRG ME10754 SHEET 7 SHALL BE APPLICABLE.
2. THESE ITEMS SHALL BE MANUFACTURED BY MANUFACTURERS WHICH HAVE BEEN APPROVED BY THE RMS FOR THESE ITEMS.
3. ALL WELDS TO BE IN ACCORDANCE WITH AS/NZS 1554 PART 1.
4. REMOVE ALL BURRS, SHARP EDGES AND WELDING SCALE BEFORE GALVANISING AND CLEAR THREADS AFTER GALVANISING.
5. FINISH: HOT DIPPED GALVANISED IN ACCORDANCE WITH AS/NZS 4680.
6. TO FIT THE ID PLATE (ITEM 12) IN THE POSITION SHOWN ON THE ARM (ITEM 1), FIRST DRILL 4 HOLES USING DRILL No. 27, THEN GALVANISE ITEM 1 AND THEN AFFIX ID PLATE TO THE ARM USING HAMMER DRIVE SCREWS No. 8, 1/2 INCH LONG, ZINC PLATED.
7. ALL ITEMS TO BE SUPPLIED FITTED AS SHOWN BEFORE DELIVERY.
8. TOLERANCE OF ALL ARM DIMENSIONS UNLESS INDICATED OTHERWISE:
  - FOR SLOTS AND POSITION OF SLOT CENTRES:  $\pm 0.5$
  - FOR DIMENSIONS UP TO AND INCLUDING 350:  $\pm 1$
  - FOR DIMENSIONS OVER 350 AND UP TO AND INCLUDING 1300:  $\pm 2$
  - FOR DIMENSIONS OVER 1300:  $\pm 4$
  - ANGULAR TOLERANCE:  $\pm 1^\circ$



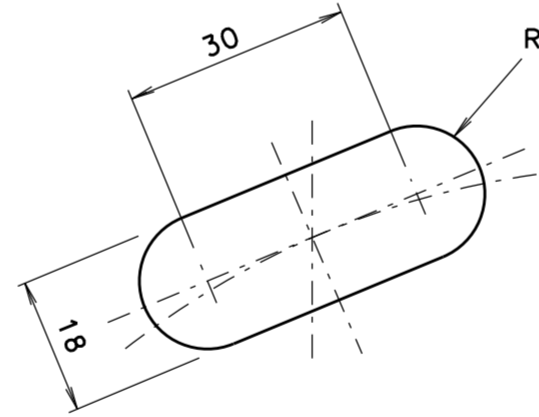
ARM DETAILS  
SCALE 1:10



SLOT DETAIL A  
SCALE 1:1



FLANGE DETAIL  
SCALE 1:5

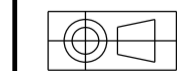


SLOT DETAIL B  
SCALE 1:1

DIMENSIONS ARE IN MILLIMETRES

ORIGINAL DESIGN BY MECH ENGINEERING SECTION 52 ROTHSCHILD AVENUE ROSEBERY NSW 2018 PHONE (02) 9662-5204 FACSIMILE (02) 9662-5411	ORIGINAL REFERENCES MECHANICAL ENGINEERING SECTION MES DWG ME10754 SH5 ISSUE E DESIGN RTA CHECKED JE DRAWING HA CHECKED JE APPROVED RK 22-12-1998
---	--

ITEM	DESCRIPTION	MATERIAL	FINISH	QTY
14	KELVINDALE PLUG CP15X	PLASTIC	NATURAL	1
13	HAMMER DRIVE SCREWS No. 8, 1/2 INCH LONG	STAINLESS STEEL	NATURAL	4
12	IDENTIFICATION PLATE (REFER TO DRG No. VM215-5)	STAINLESS STEEL	NATURAL	1
11	WASHER, FLAT Ø16 TO AS 1237	MILD STEEL	GALVANISED	2
10	WASHER, SPRING Ø16	SPRING STEEL	TO AS/NZS 4680	2
9	SCREW, HEX HEAD M16 x 35 TO AS/NZS 1111	MILD STEEL	GALVANISED TO AS 1214	2
8	NUT, HEX M16 TO AS/NZS 1112	MILD STEEL		2
7	NUT, HEX M20 TO AS/NZS 1112	MILD STEEL	2	
6	SCREW, HEX HEAD M20 x 200 TO AS/NZS 1111	MILD STEEL	2	
5	WASHER, FLAT Ø20 LARGE SERIES TO AS 1237	MILD STEEL	GALVANISED TO AS/NZS 4680	4
4	WASHER, SPRING M20	SPRING STEEL		2
3	FLANGE HOOD CHS 88.9 X 4 TO AS 1163	STEEL	1	
2	FLANGE PLATE 10mm STEEL PLATE TO AS/NZS 3678	STEEL	1	
1	ARM SHS 150 X 150 X 6 C350 TO AS 1163	STEEL	1	



A ORIGINAL ISSUE	B ISSUE 19-02-01 JI TC3051 Ø32 HOLE & ITEM 14 ADDED FOR CCTV CABLE ENTRY RVC BWT	C ISSUE 20-11-09 MACHINING ADDED. MF BWT	D ISSUE 06-05-2013 FLANGE PLATE WAS 150mm WIDE. SLOT DETAIL WAS 15mm WIDE. LC. BWT.	E ISSUE 12-11-2013 ITEM 6 WAS 180mm LONG, NOW 200mm. LC. BWT.	F ISSUE 17-11-2017 ELLIPTICAL CUT OUT WIDTH ON FLANGE PLATE WAS 85. WELDING SIZE & SYMBOL CORRECTION FOR ITEM 1 TO ITEM 2. IH BWT
------------------	--	--	--	--	---

REFERENCE DRAWINGS	DRAWN RVC 29-6-99
GEN. ARRANGEMENT VM215-1	CHECKED GD 2-3-2000
MAST COLUMN VM215-2	MECH ENGINEER SECTION
UPPER SUPPORT VM215-4	PASSED BWT 8-3-2000
ID PLATE VM215-5	
GEN. MANUFACTURING NOTES & WELD DET'S	CW8536
	APPROVED
	T. YUNG
	8-3-2000
	DATE

ROADS AND MARITIME SERVICES TRAFFIC SIGNALS	
MECHANICAL DETAILS OF OUTREACH ARM FOR TYPE 9 MAST ARM	

SHEET SIZE A2	FILE NO	SCALE AS SHOWN	SHEET NO
SUPERSEDES ME10754 SH 5		ISSUE	A B C D E F
VM215-3			