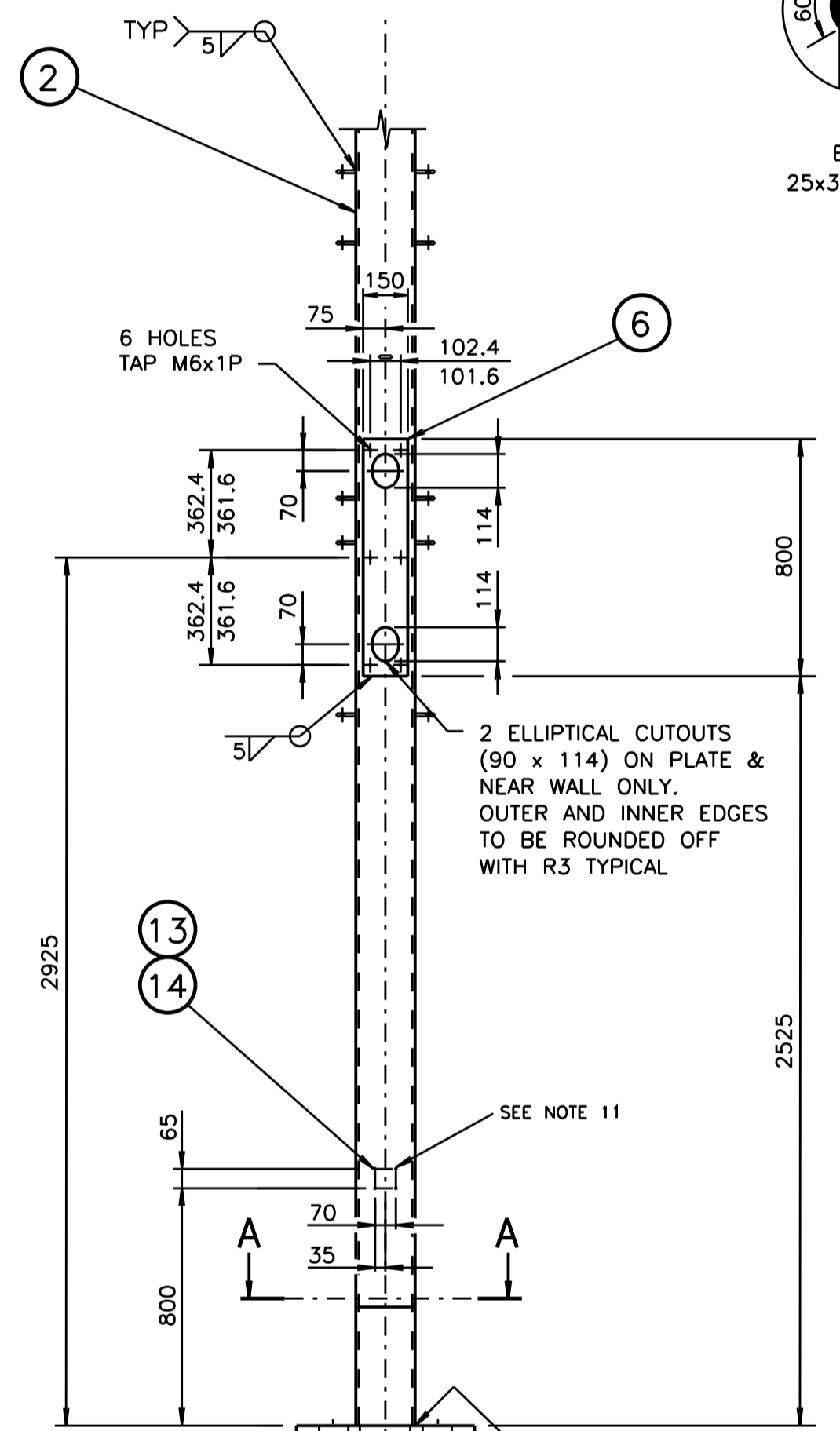
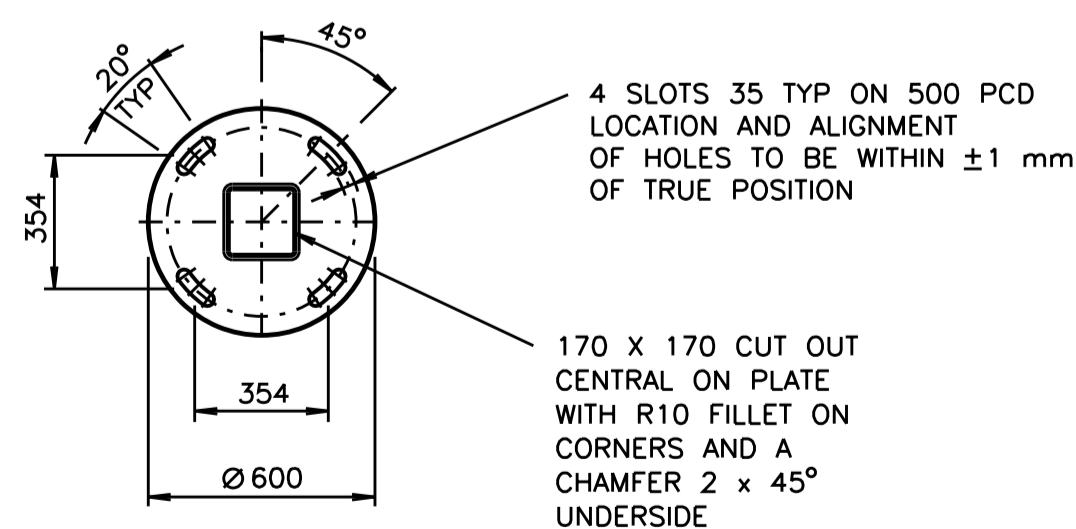


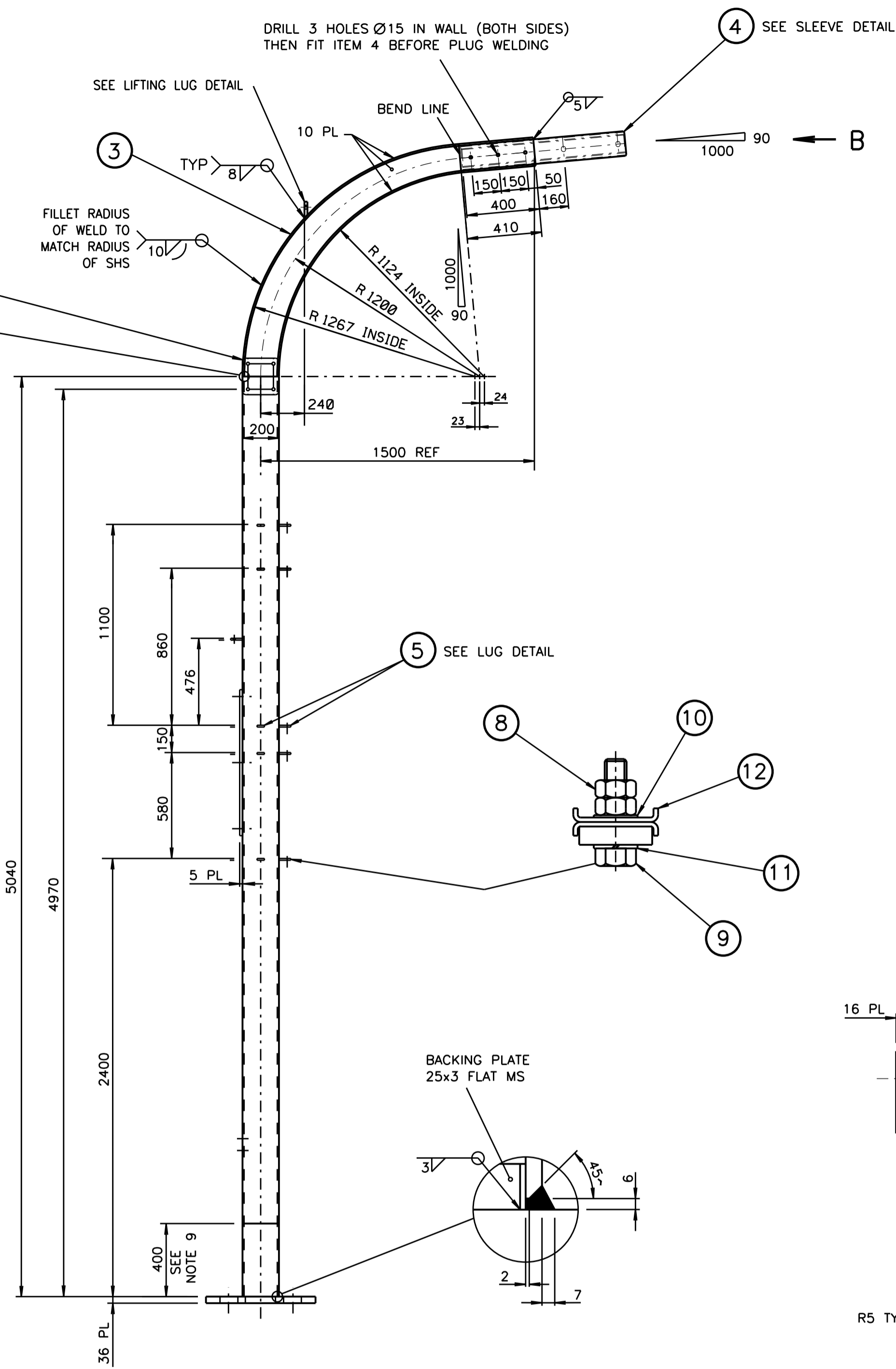
ADAPTOR PLATE DETAIL
SCALE 1:5



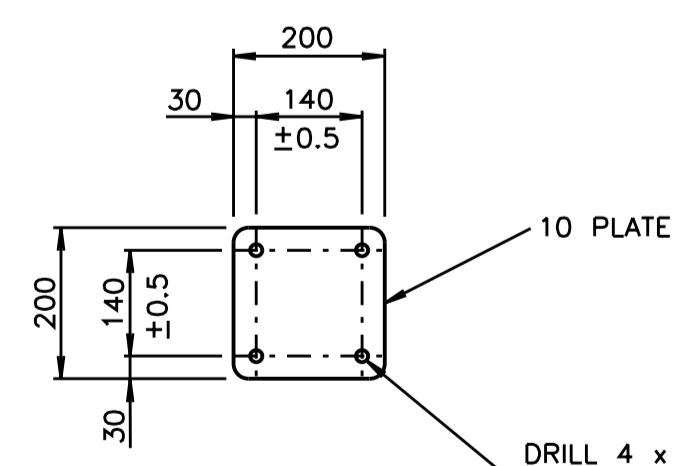
SECTION A-A



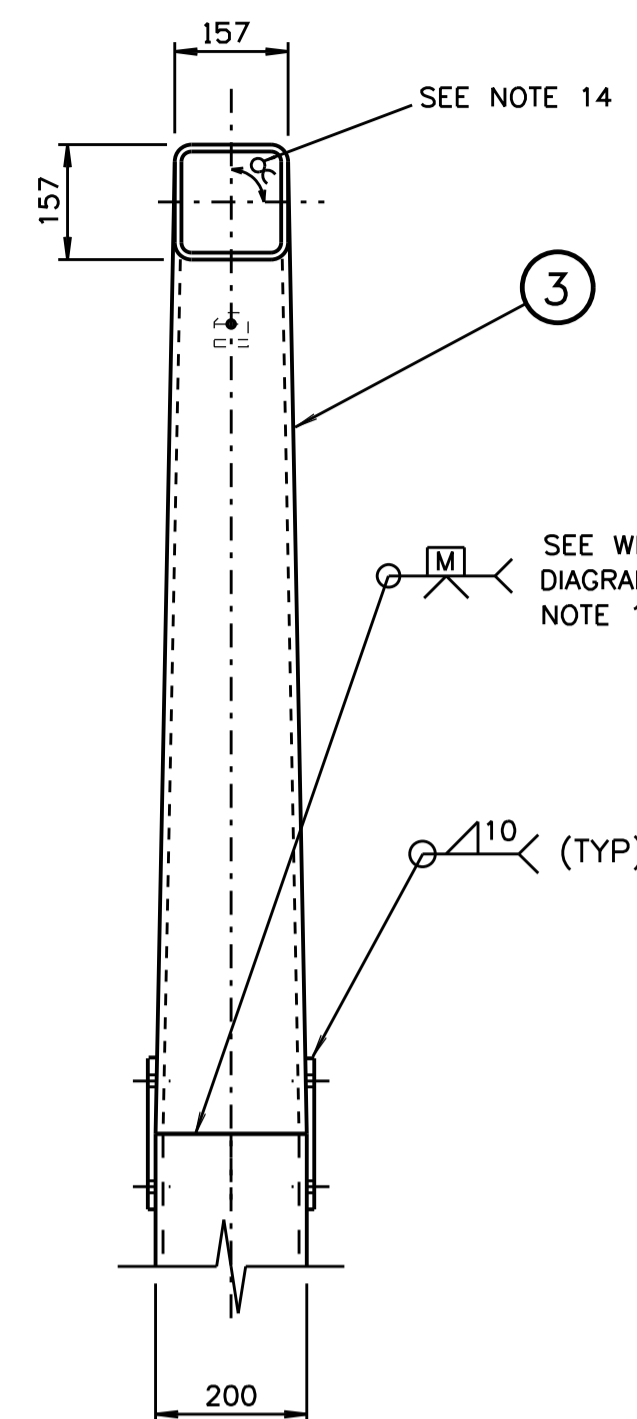
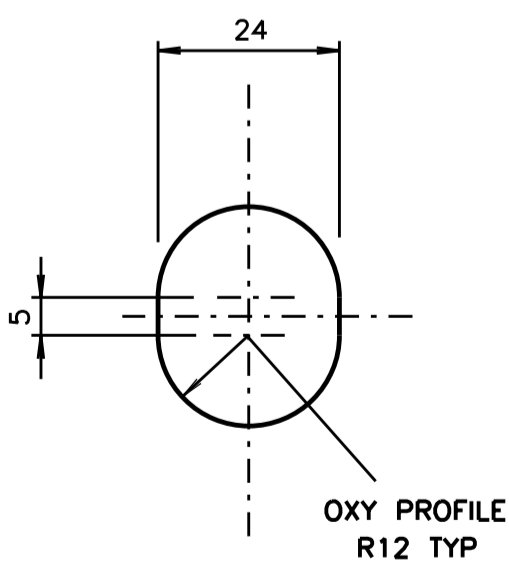
BACKING PLATE
25x3 FLAT MILD STEEL



SIGN FACE ATTACHMENT PLATE DETAIL
SCALE 1:10

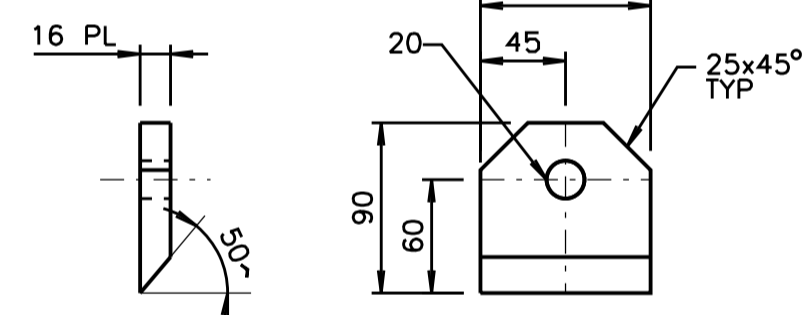


SLOT DETAIL
SCALE 1:1

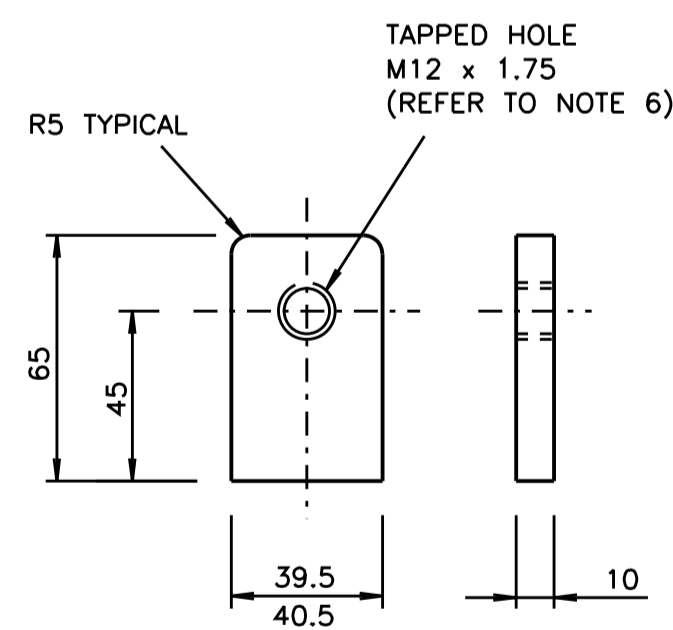


SLEEVE NOT SHOWN
SCALE 1:10

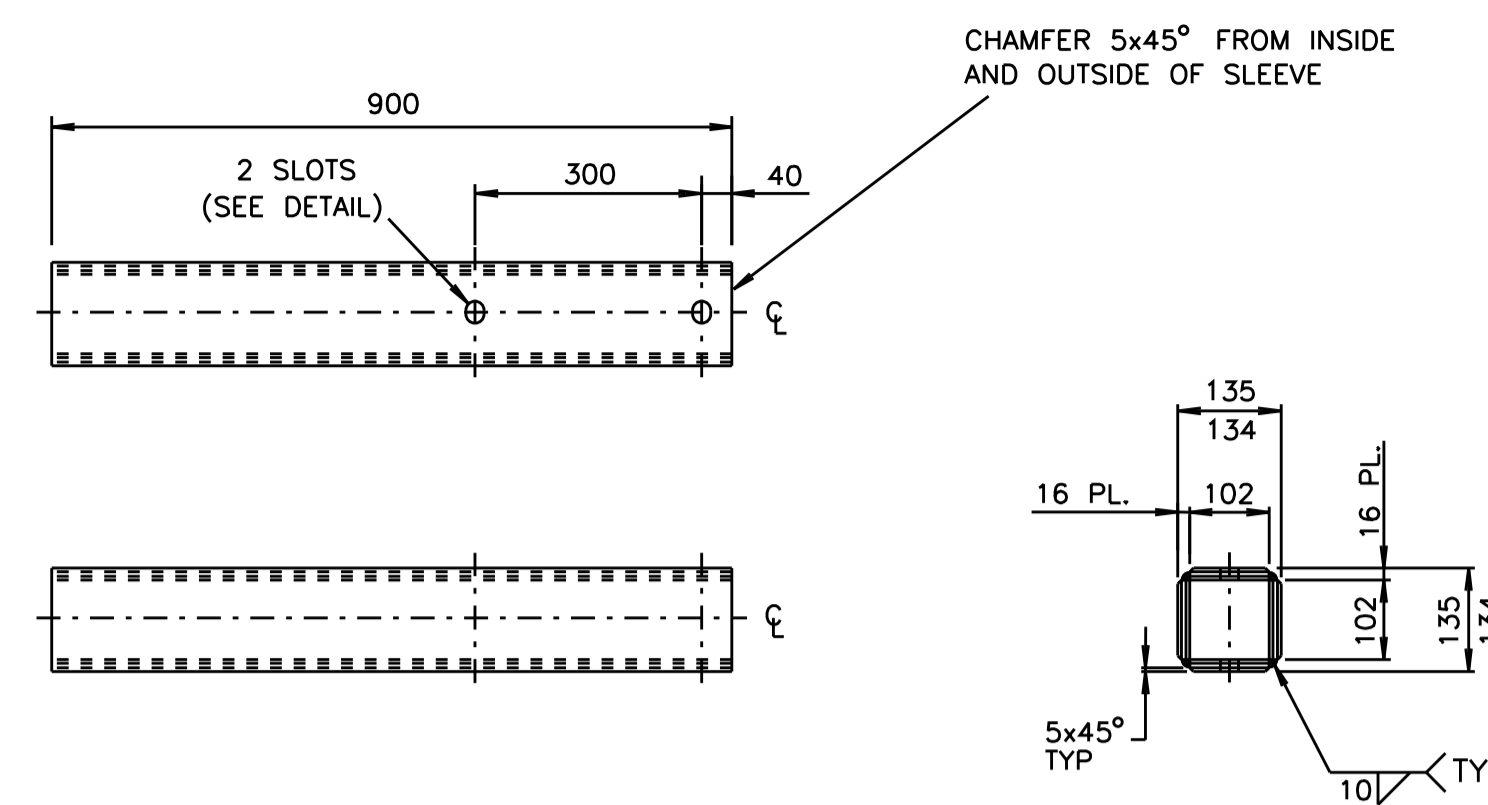
VIEW B



LIFTING LUG DETAIL
SCALE 1:2



LUG DETAIL
SCALE 1:2



SLEEVE DETAIL
SCALE 1:10

NOTES

- THE REQUIREMENTS OF SPECIFICATION MA/1 AND DRG ME10754 SHEET 7 SHALL BE APPLICABLE.
- THESE ITEMS SHALL BE MANUFACTURED BY MANUFACTURERS WHICH HAVE BEEN APPROVED BY THE RMS FOR THESE ITEMS.
- ALL WELDS TO BE IN ACCORDANCE WITH AS 1554 PART 1.
- REMOVE ALL BURRS, SHARP EDGES AND WELDING SCALE.
- FINISH: HOT DIPPED GALVANISED, TO BE IN ACCORDANCE WITH AS/NZS 4680.
- ALL THREADS TO BE CLEARED AFTER GALVANISING.
- ITEMS 8, 9, 10, 11 & 12 TO BE SUPPLIED FITTED TO EACH LUG AS SHOWN BEFORE DELIVERY. ITEM 9 TO POINT UPWARDS IN ALL LUGS. ITEMS 15 & 16 TO BE SUPPLIED FITTED.
- A PAIR OF LOCK WASHERS (ITEM 12) SHALL BE FITTED TO EACH LUG ASSEMBLY (DIMPLE TO DIMPLE).
- LOWER 400mm OF POLE TO BE TREATED AFTER GALVANISATION AS FOLLOWS:
PAINT INSIDE & OUTSIDE WITH LITHOFORM No. 2 OR GALVAPREP;
WASH WITH WATER AND APPLY ONE COAT OF DULUX AMERLOCK 400 GREY, OR AN APPROVED EQUIVALENT BEFORE DELIVERY.
- MOUNTING SURFACE OF LUG AND MAST ARM SURFACE TO BE WITHIN 90° ± 0.5°. THREADED HOLE IN MOUNTING LUG TO BE 90° ± 0.5° IN RELATION TO MOUNTING SURFACE.
- TO FIT THE ID PLATE (ITEM 13) IN THE POSITION SHOWN ON THE POST (ITEM 2), FIRST DRILL 4 HOLES USING DRILL No. 27, THEN GALVANISE ITEM 2 AND THEN AFFIX ID PLATE TO THE POST USING HAMMER DRIVE SCREWS No. 8, 1/2 INCH LONG, ZINC PLATED.
- TOLERANCE OF ALL ARM DIMENSIONS UNLESS INDICATED OTHERWISE:
- FOR DIMENSIONS UP TO AND INCLUDING 300: ±1
- FOR DIMENSIONS OVER 300 AND UP TO AND INCLUDING 1300: ±2
- FOR DIMENSIONS OVER 1300: ±4
- ANGULAR TOLERANCE: ±1°
- THE BUTT WELD TO BE GROUND FLAT TO ALLOW THE PLATE (ITEM 7) TO SIT FLAT. DO NOT GRIND FLAT ON THE OTHER 2 SIDES.
- CARE IS TO BE TAKEN TO ENSURE THE 90° ANGLE α IN VIEW B OF THE OUTREACH IS WITHIN THE ANGULAR TOLERANCE (AS SET OUT IN NOTE 12).

ITEM	DESCRIPTION	MATERIAL	FINISH	QTY
16	SIGN FACE ADAPTOR PLATE TO AS/NZS 3678 (SEE DETAIL)	MILD STEEL	HOT DIP GALV	2
15	CSK HEAD SCREW M16 x 40 TO AS/NZS 1111	STAINLESS STEEL	NATURAL	8
14	HAMMER DRIVE SCREWS No. 8, 1/2 INCH LONG	STAINLESS STEEL	NATURAL	4
13	IDENTIFICATION PLATE (SEE DRG No. VM215-5)	STAINLESS STEEL	NATURAL	1
12	LOCK WASHER (SEE DRG No. VM200-24)	STAINLESS STEEL	NATURAL	32
11	SPRING WASHER M12	SPRING STEEL	GALV TO AS/NZS 4680	16
10	FLAT WASHER M12 TO AS1237	MILD STEEL	GALV TO AS/NZS 4680	16
9	HEXAGON HEAD SET SCREW M12 x 60 TO AS/NZS 1111	MILD STEEL	GALV TO AS1214	16
8	HEXAGON NUT M12 TO AS/NZS 1112	MILD STEEL	GALV TO AS1214	32
7	SIGN FACE ATTACHMENT PLATE TO AS/NZS 3678 (SEE DETAIL)	MILD STEEL		2
6	MOUNTING PLATE STEEL TO AS/NZS 3678	MILD STEEL		1
5	MOUNTING LUG TO AS1442/AS/NZS 3679 (SEE DETAIL)	MILD STEEL	HOT DIP GALV	15
4	SLEEVE STEEL TO AS/NZS 3678 (SEE DETAIL)	MILD STEEL	REFER NOTES 2 TO 6	1
3	TRANSITION STEEL TO AS/NZS 3678	MILD STEEL		1
2	POST STEEL HOLLOW SECTION 200 x 200 x 9 SHS TO AS1163	STEEL C350		1
1	BASE PLATE STEEL TO AS/NZS 3678	STEEL PLATE		1

ORIGINAL DESIGN BY
MECH ENGINEERING SECTION
52 ROHSCHILD AVENUE
ROSEBERY NSW 2018
PHONE (02) 9662-5204
FACSIMILE (02) 9662-5411

ORIGINAL REFERENCES
MECHANICAL ENGINEERING SECTION
MES DWG ME10754 SHS 2&3 ISSUE E
DESIGN RTA CHECKED JE
DRAWING HA CHECKED JE
APPROVED RK 22-12-1998

REFERENCE DRAWINGS
GEN. ARRANGEMENT VM215-1
OUTREACH ARM VM215-3
UPPER SUPPORT VM215-4
ID PLATE VM215-5
LOCK WASHER VM200-24
GEN. MECHANICAL NOTES & WELD DET'S CWB536

DRAWN 1H JUNE 1999
CHECKED GWD 09-02-2000
MECH ENGINEER SECTION
PASSED BWT 1-2-2000
APPROVED T. YUNG
DATE 11-02-2000

ROADS AND MARITIME SERVICES
TRAFFIC SIGNALS

MECHANICAL DETAILS OF
TYPE 9 MAST ARM
MAST COLUMN

SHEET SIZE A1
FILE NO
SCALE 1:20 OR AS SHOWN
SHEET NO
SUPERSEDES ME10754 SHS 2&3 ISSUE
REG NO
VM215-2

A ORIGINAL ISSUE
B ISSUE 16-05-2000
JI TC3007 SLOTS IN SLEEVE WERE DIA 24 HOLES.
RVC BWT
C ISSUE 21-04-2006
POSITION OF LUGS ALTERED. DIM. FROM BASE PLATE TO LOWER MTG LUG WAS 226A.
ITEM 15 WAS HEX HD M16x15 SCREW. ITEM 16 ADDED. NOTE 7 AMENDED. WELDING FOR TRANSITION SECTION WAS 8.
IH BWT
D ISSUE 20-11-2009
SLEEVE & TRANSITION REVISED. LIFTING LUG ADDED.
MF BWT
E ISSUE 27-02-2014
EXTRA LUG ADDED TO MAST. QTY OF ITEMS 8,9,10,11 & 12 REVISED TO SUIT.
LC.
F ISSUE 26-05-2017
SLOT WELD CHANGED TO FULL WELD FOR BACKING PLATE.
IH BWT
G ISSUE 17-11-2017
ITEM 15 WAS MILD STEEL GALVANISED.
IH BWT

CATALOGUE No.
1823 3607