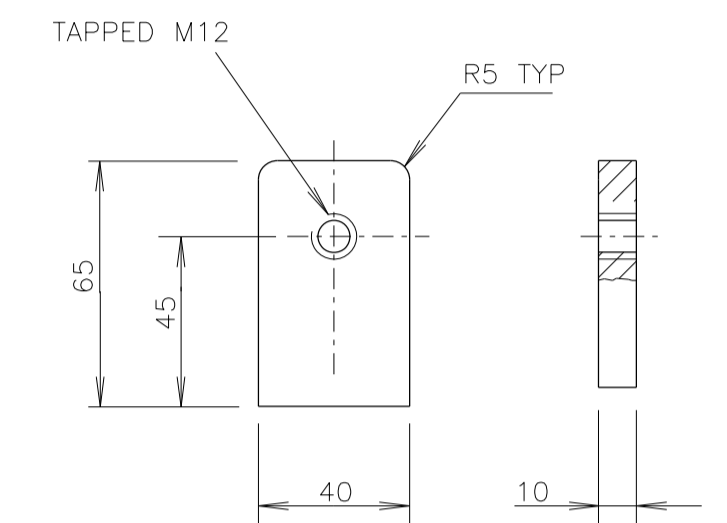
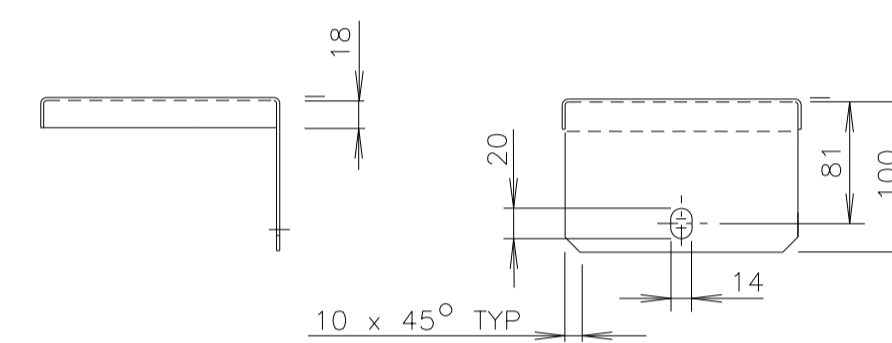


DETAIL B  
1 : 2

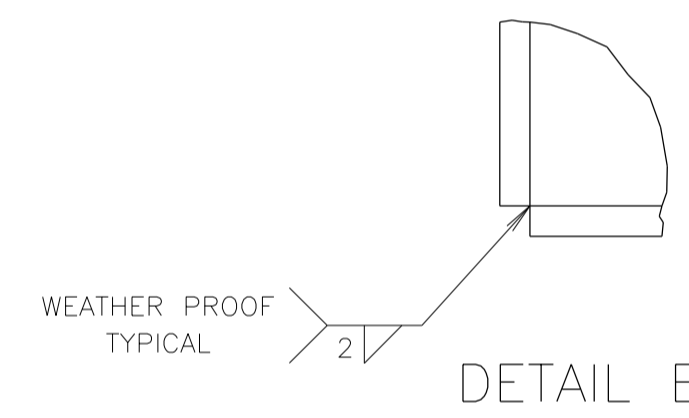


DETAIL C  
(ITEM 5) SEE NOTE 7  
1 : 2

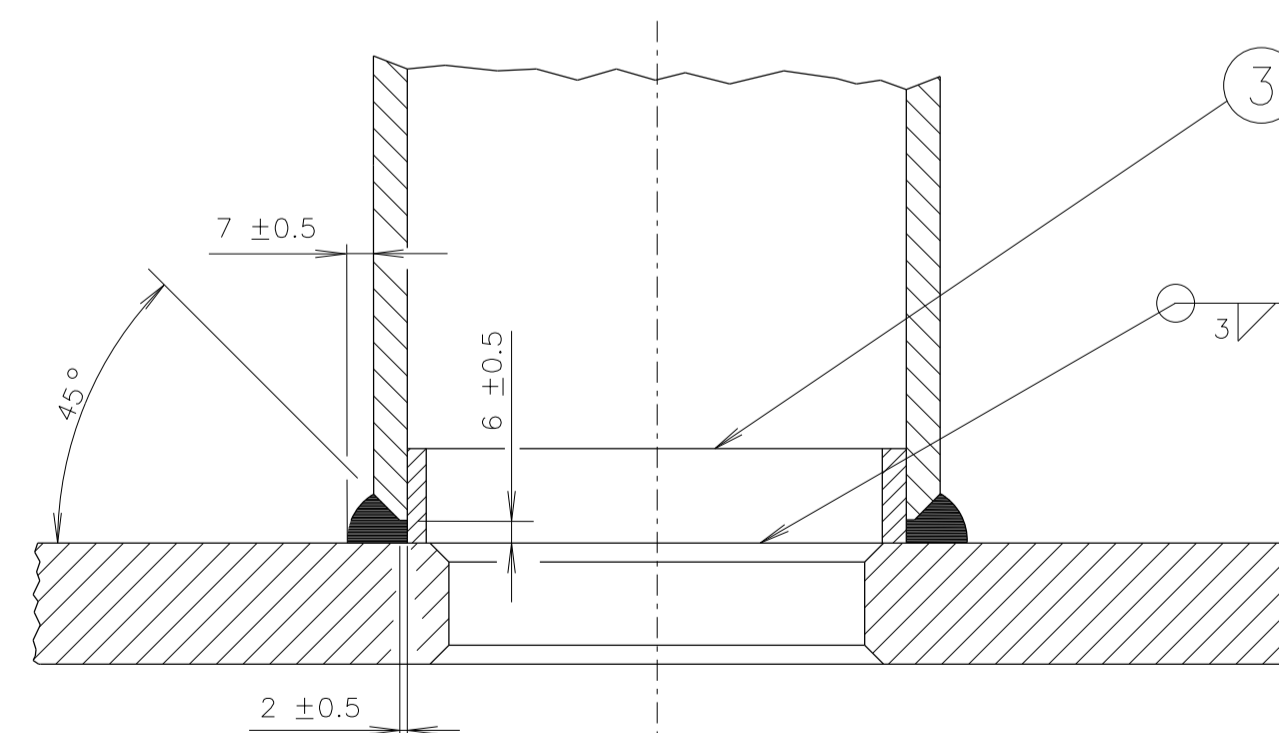
DETAIL A  
1 : 2



DETAIL D  
(ITEM 6)  
1 : 5



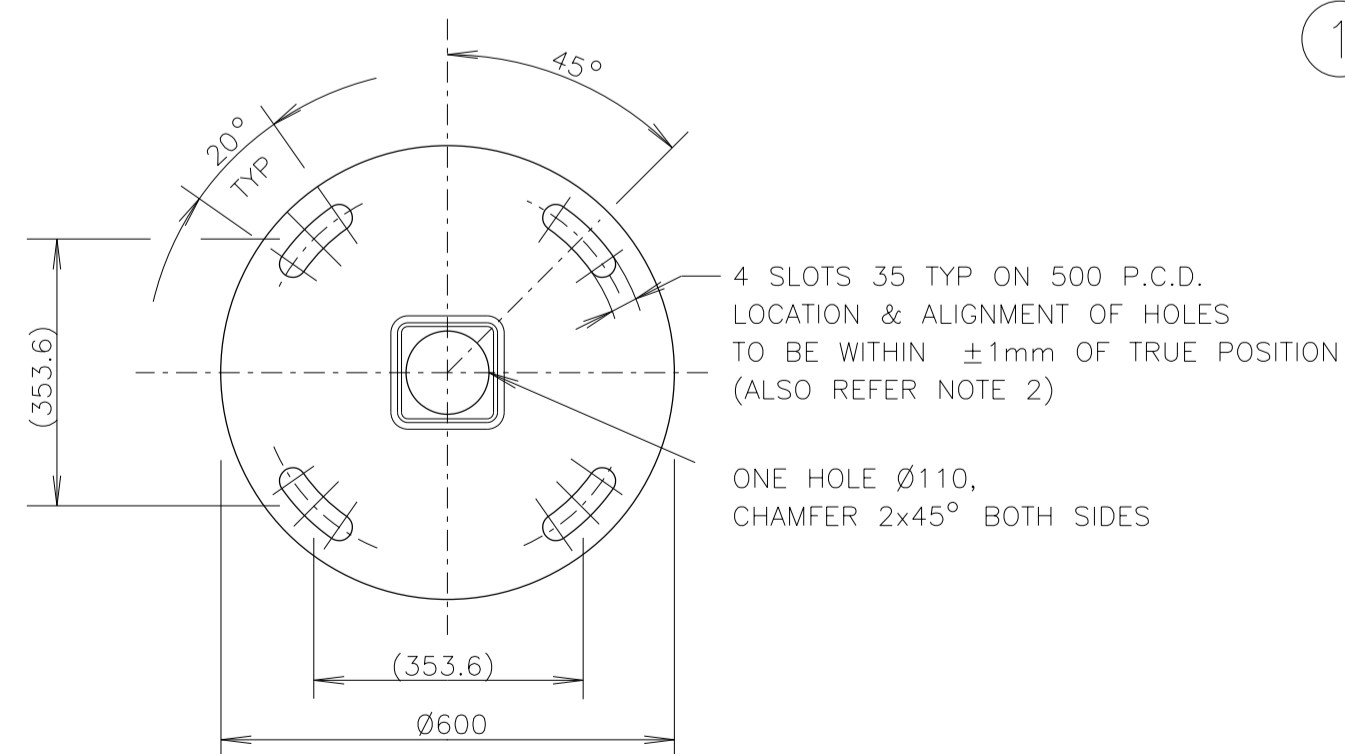
DETAIL E  
2 : 1



DETAIL F  
1 : 2

NOTES

- UNLESS OTHERWISE STATED, ALL WELDS TO BE CONTINUOUS FILLET AND IN ACCORDANCE WITH AS 1554 PART 1.
- TOLERANCE OF ALL POST DIMENSIONS UNLESS INDICATED OTHERWISE:
  - FOR DIMENSIONS UP TO AND INCLUDING 200: ±1
  - FOR DIMENSIONS OVER 200 AND UP TO AND INCLUDING 2000: ±2
  - FOR DIMENSIONS OVER 2000: ±4
  - ANGULAR TOLERANCE: ±1°
 FOR THE GENERAL TOLERANCE OF THE BASE PLATE DRILLING, REFER TO AS1798.
- ALL BURRS, SHARP EDGES & WELDING SCALE TO BE REMOVED BEFORE GALVANISING.
- ALL THREADS TO BE CLEARED AFTER GALVANISING.
- ITEM 6, CAP, TO BE FITTED TO POST FOR PROTECTION DURING STORAGE & INSTALLATION UNTIL UPPER PART (SIGN POST) IS FITTED.
- FOR DETAILS OF EXTENSION FOR SIGNS, REFER DRG NO CW6144.
- THREADED HOLE IN MOUNTING LUG (ITEM 5) TO BE 90° ±0.5° IN RELATION TO MOUNTING SURFACE. MOUNTING SURFACES OF LUGS TO BE AT 90° ±0.5° IN RELATION TO POST WALLS.
- AN ALTERNATIVE MATERIAL FOR ITEM 6 MAY BE MILD STEEL 1.5 THICK, FINISH HOT DIP GALVANISED TO AS1650.
- REFER TO SPECIFICATION P/6 FOR OTHER REQUIREMENTS FOR THE POST.
- LOWER 400mm OF POST TO BE TREATED AS FOLLOWS:  
PAINT INSIDE AND OUTSIDE WITH "LITHOFORM NO 2" OR "GALVAPREP", WASH WITH WATER & APPLY ONE COAT OF DULUX AMERLOCK 400 BLACK OR GREY, OR AN APPROVED EQUIVALENT BEFORE DELIVERY.
- BEFORE DELIVERY ITEMS 6, 7, 8, 9, 10, 11 & 13 TO BE SUPPLIED AND FITTED AS SHOWN.
- MANUFACTURERS IDENTIFICATION AND DATE OF SUPPLY TO BE LEGIBLY & DURABLY MARKED.



DIMENSIONS IN MILLIMETRES

ITEM	DESCRIPTION	MATERIAL	FINISH	QTY
13	LOCK WASHER (REFER PLAN VM200-24)	ST STEEL	NATURAL	26
12	HEX HEAD SCREW M12 X 30	TO AS1111 MILD STEEL	GALV TO AS1214	3
11	SPRING WASHER FOR M12	TO AS1968 SPRING STEEL	GALV TO AS1650	16
10	HEX HEAD SCREW M12 X 60	TO AS1111 MILD STEEL	GALV TO AS1214	13
9	FLAT WASHER Ø12 NORMAL SERIES	TO AS1237 MILD STEEL	GALV TO AS1650	15
8	HEX FULL NUT M12	TO AS1112 MILD STEEL	GALV TO AS1214	31
7	HEX HEAD BOLT M12 X 180	TO AS1111 MILD STEEL	GALV TO AS1214	1
6	CAP, FLAT SHEET THICKNESS 2mm (SEE NOTES 5 & 8)	ALUMINIUM	NATURAL	1
5	MOUNTING LUG (SEE NOTE 7)	TO AS3679 MILD STEEL		13
4	STIFFENING PLATE, 100 X 12 FLAT X 160 LONG TO AS3679	MILD STEEL		2
3	BACKING, 25 X 5 FLAT, LENGTH TO SUIT TO AS3679	MILD STEEL	GALV TO AS1650	1
2	POST, 150 X 150 X 9.0 SHS	TO AS1163 STEEL C350	REFER TO NOTES 3 & 4	1
1	BASE PLATE	TO AS3678 MILD STEEL		1

"P" ISSUE 03-08-95  
J/1 TC 2540, TC2700.  
MIG LUG BKT DIM 1100  
ADDED WITH 4 LOWER  
BKT POSITIONS CHANGED.  
ON POST DIM 25 WAS 23.  
IN NOTE 2, TOLERANCE  
TABLE ADDED.  
POST SIZE WAS 152x152.  
IN CAP, SLOTS WERE Ø13  
HOLES, DIMS 100, 81 &  
18 WERE 163, 151 & 20.  
NOTE NOS ALTERED.  
IN DETAIL A, 3 X M12  
ADJUST SCREWS ADDED.  
ITEM 7 WAS 175 LONG.  
ITEM 8 QTY WAS 21.  
ITEM 9 QTY WAS 10.  
ITEM 10 QTY WAS 11.  
ITEM 11 QTY WAS 11.  
ITEM 12 QTY WAS 11.  
ITEM 13 QTY WAS 11.  
ITEM 14 QTY WAS 11.  
ITEM 15 QTY WAS 11.  
ITEM 16 QTY WAS 11.  
ITEM 17 QTY WAS 11.  
ITEM 18 QTY WAS 11.  
ITEM 19 QTY WAS 11.  
ITEM 20 QTY WAS 11.  
ITEM 21 QTY WAS 11.  
ITEM 22 QTY WAS 11.  
ITEM 23 QTY WAS 11.  
ITEM 24 QTY WAS 11.  
ITEM 25 QTY WAS 11.  
ITEM 26 QTY WAS 11.  
ITEM 27 QTY WAS 11.  
ITEM 28 QTY WAS 11.  
ITEM 29 QTY WAS 11.  
ITEM 30 QTY WAS 11.  
ITEM 31 QTY WAS 11.  
ITEM 32 QTY WAS 11.  
ITEM 33 QTY WAS 11.  
ITEM 34 QTY WAS 11.  
ITEM 35 QTY WAS 11.  
ITEM 36 QTY WAS 11.  
ITEM 37 QTY WAS 11.  
ITEM 38 QTY WAS 11.  
ITEM 39 QTY WAS 11.  
ITEM 40 QTY WAS 11.  
ITEM 41 QTY WAS 11.  
ITEM 42 QTY WAS 11.  
ITEM 43 QTY WAS 11.  
ITEM 44 QTY WAS 11.  
ITEM 45 QTY WAS 11.  
ITEM 46 QTY WAS 11.  
ITEM 47 QTY WAS 11.  
ITEM 48 QTY WAS 11.  
ITEM 49 QTY WAS 11.  
ITEM 50 QTY WAS 11.  
ITEM 51 QTY WAS 11.  
ITEM 52 QTY WAS 11.  
ITEM 53 QTY WAS 11.  
ITEM 54 QTY WAS 11.  
ITEM 55 QTY WAS 11.  
ITEM 56 QTY WAS 11.  
ITEM 57 QTY WAS 11.  
ITEM 58 QTY WAS 11.  
ITEM 59 QTY WAS 11.  
ITEM 60 QTY WAS 11.  
ITEM 61 QTY WAS 11.  
ITEM 62 QTY WAS 11.  
ITEM 63 QTY WAS 11.  
ITEM 64 QTY WAS 11.  
ITEM 65 QTY WAS 11.  
ITEM 66 QTY WAS 11.  
ITEM 67 QTY WAS 11.  
ITEM 68 QTY WAS 11.  
ITEM 69 QTY WAS 11.  
ITEM 70 QTY WAS 11.  
ITEM 71 QTY WAS 11.  
ITEM 72 QTY WAS 11.  
ITEM 73 QTY WAS 11.  
ITEM 74 QTY WAS 11.  
ITEM 75 QTY WAS 11.  
ITEM 76 QTY WAS 11.  
ITEM 77 QTY WAS 11.  
ITEM 78 QTY WAS 11.  
ITEM 79 QTY WAS 11.  
ITEM 80 QTY WAS 11.  
ITEM 81 QTY WAS 11.  
ITEM 82 QTY WAS 11.  
ITEM 83 QTY WAS 11.  
ITEM 84 QTY WAS 11.  
ITEM 85 QTY WAS 11.  
ITEM 86 QTY WAS 11.  
ITEM 87 QTY WAS 11.  
ITEM 88 QTY WAS 11.  
ITEM 89 QTY WAS 11.  
ITEM 90 QTY WAS 11.  
ITEM 91 QTY WAS 11.  
ITEM 92 QTY WAS 11.  
ITEM 93 QTY WAS 11.  
ITEM 94 QTY WAS 11.  
ITEM 95 QTY WAS 11.  
ITEM 96 QTY WAS 11.  
ITEM 97 QTY WAS 11.  
ITEM 98 QTY WAS 11.  
ITEM 99 QTY WAS 11.  
ITEM 100 QTY WAS 11.

SUPPLY CATALOGUE NO.  
1823 3908

REFERENCE DRAWINGS  
GEN. ARRANGEMENT VM212-2  
FOOTING FOR MAST-ARM 5 & POST 6 VC002-72  
EXTENSION FOR SIGN CW6144  
TERMINAL BOX VM015-20  
LOCK WASHER VM200-24

DRAWN RB 30-06-78  
CHECKED OFL 28-08-78  
PASSED BWT 28-08-78  
APPROVED  
F. HULSCHER  
DATE 01-09-78

ROADS AND MARITIME SERVICES  
TRAFFIC SIGNALS

MECHANICAL AND ASSEMBLY DETAILS  
OF THE TYPE 6 POST

SHEET SIZE  
A1

SCALE 1 : 10 UNLESS OTHERWISE STATED

SUPERSEDES ISSUE 0  
ISSUE 1

REG NO  
VM212-1