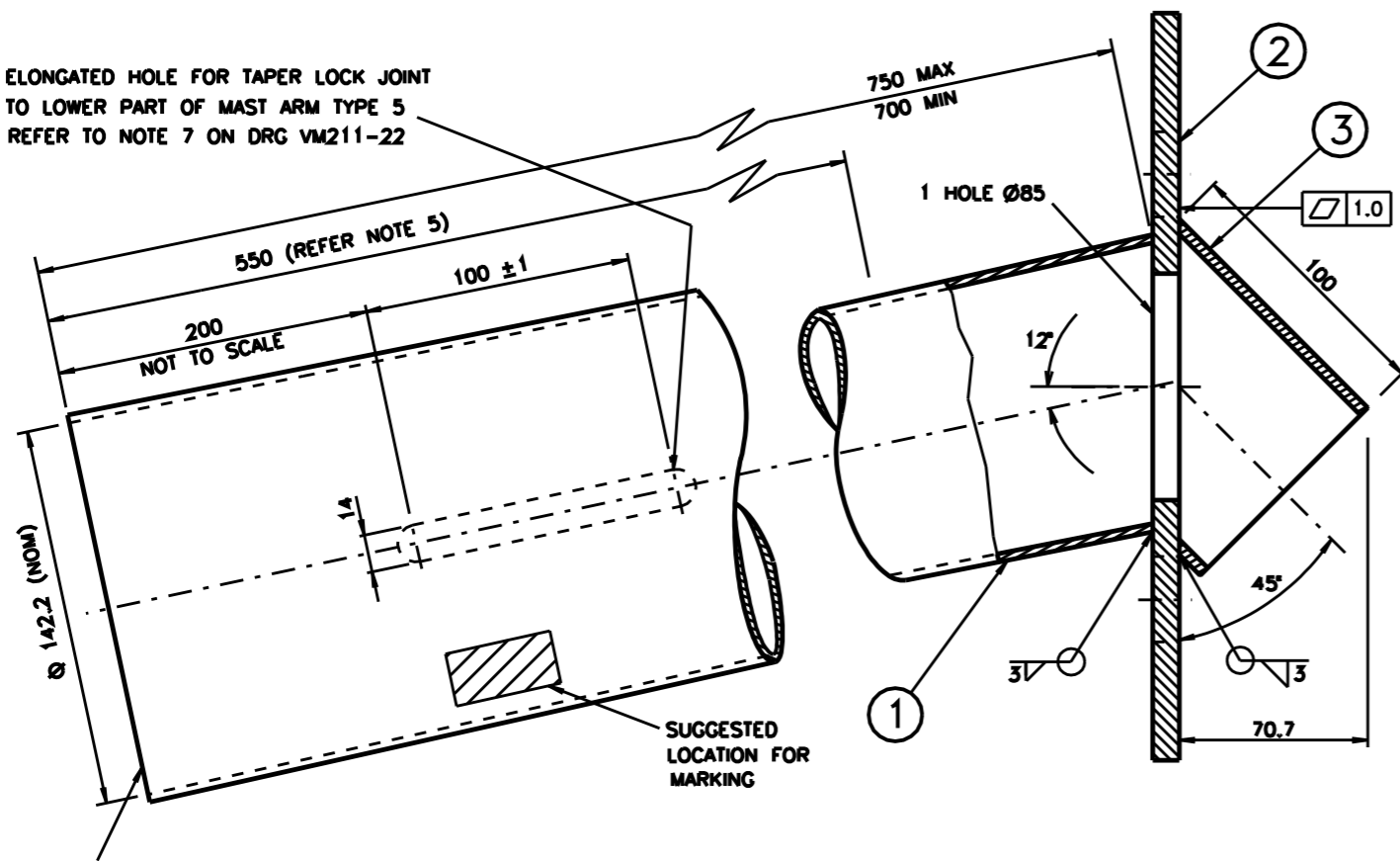
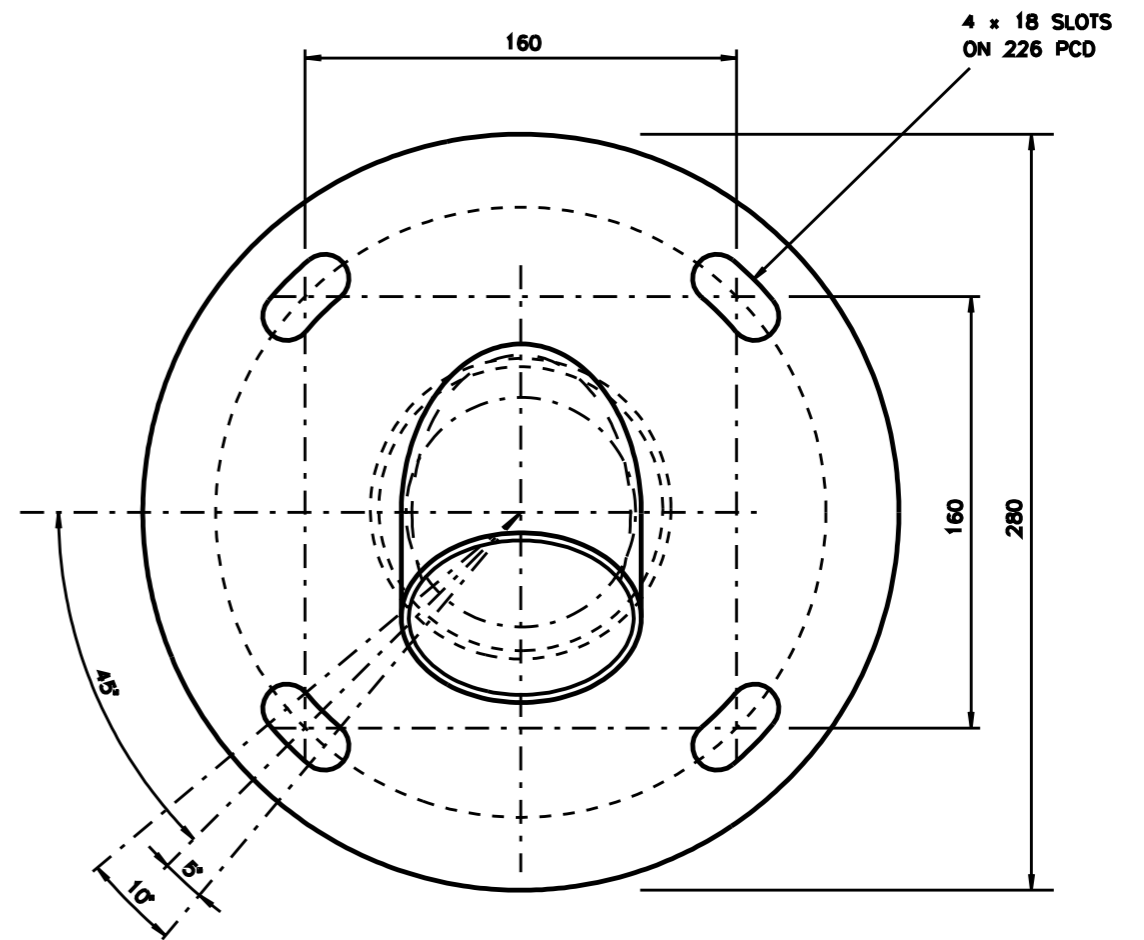


ELONGATED HOLE FOR TAPER LOCK JOINT
TO LOWER PART OF MAST ARM TYPE 5
REFER TO NOTE 7 ON DRG VM211-22



ROUNDNESS
TOLERANCE
MAJOR \varnothing 143.2
MINOR \varnothing 141.2
(REF NOTE 2)



NOTES

1. THIS DRAWING SHOULD BE READ IN CONJUNCTION WITH SPEC MA/1.
2. THE INSIDE CIRCUMFERENCE AT OPEN END OF TAPERED TUBE TO BE 447 ± 1 .
3. ALL WELDING TO BE IN ACCORDANCE WITH AS/NZS 1554 PART 1.
4. DEBURR, REMOVE ALL SHARP EDGES & WELDING SCALE.
5. A SMOOTH SURFACE & AN EVEN GALVANISING THICKNESS ($63\mu\text{m}$) IN ACCORDANCE WITH AS/NZS 4680 IS REQUIRED TO ENSURE EASE OF ASSEMBLY OF THE OUTREACH. INNER SURFACE OF TUBE (ITEM 1) TO BE FREE OF EXCESS GALVANISING AND SEAMWELD TO BE GROUND FLUSH WITHIN 550mm FROM OPEN END.
6. ALL THREADS TO BE CLEARED AFTER GALVANISING.
7. TOLERANCE OF DIMENSIONS UNLESS OTHERWISE SHOWN: ANGULAR $\pm 1^\circ$
 - LOCATION OF HOLE CENTRES ± 0.5
 - FOR DIMENSIONS UP TO AND INCLUDING 160 ± 0.5
 - FOR DIMENSIONS OVER 160 ± 2



DIMENSIONS ARE IN MILLIMETRES

3	FLANGE HOOD CHS 88.9 x 4 TO AS1163	MILD STEEL		1
2	MOUNTING PLATE 10mm THICK TO AS/NZS 3678 OR AS/NZS 3679	MILD STEEL	HD GALV SEE NOTES 5 & 6	1
1	TUBE TAPERED 1:100 ON DIA, 3.0 MIN WALL THICKNESS	HR340 TO AS/NZS 1594		1
ITEM	DESCRIPTION	MATERIAL	FINISH	QTY

C ISSUE 08-02-00
J/1 TC2342
PLAN REDRAWN.
NOTE 8 ADDED.
STDS UPDATED.
IH BWT

D ISSUE 07-04-06
ELBOW REPLACED BY
FLANGEHOOD.
 \varnothing 85 HOLE WAS TAPPED
HOLE FOR 2.5 INCH
BSP.
SHEET SIZE WAS A3.
MTG PLATE WAS 200 SQ
WITH 4 x \varnothing 18 HOLES.
IH BWT

REFERENCE DRAWINGS		DRAWN IS 27-7-87
MECH ASSEMBLY	VM211-26	CHECKED RVC 26-9-89
LOWER PART MA	VM211-22	
		PASSED B TAYLOR 08-12-1989
		APPROVED FR HULSCHER MANAGER, EQUIPMENT, & STDS DATE 08-12-1989.
SUPPLY CAT NO 18233649		

ROADS AND TRAFFIC AUTHORITY OF NSW
TRAFFIC SIGNALS

**MECHANICAL DETAIL OF OUTREACH
FOR MAST ARM TYPE 5S**

SHEET SIZE A2	FILE NO	SCALE 1:2 (OR AS SHOWN)	SHEET NO
SUPERSEDES ISSUE C		ISSUE D	
REG NO		VM211-24	