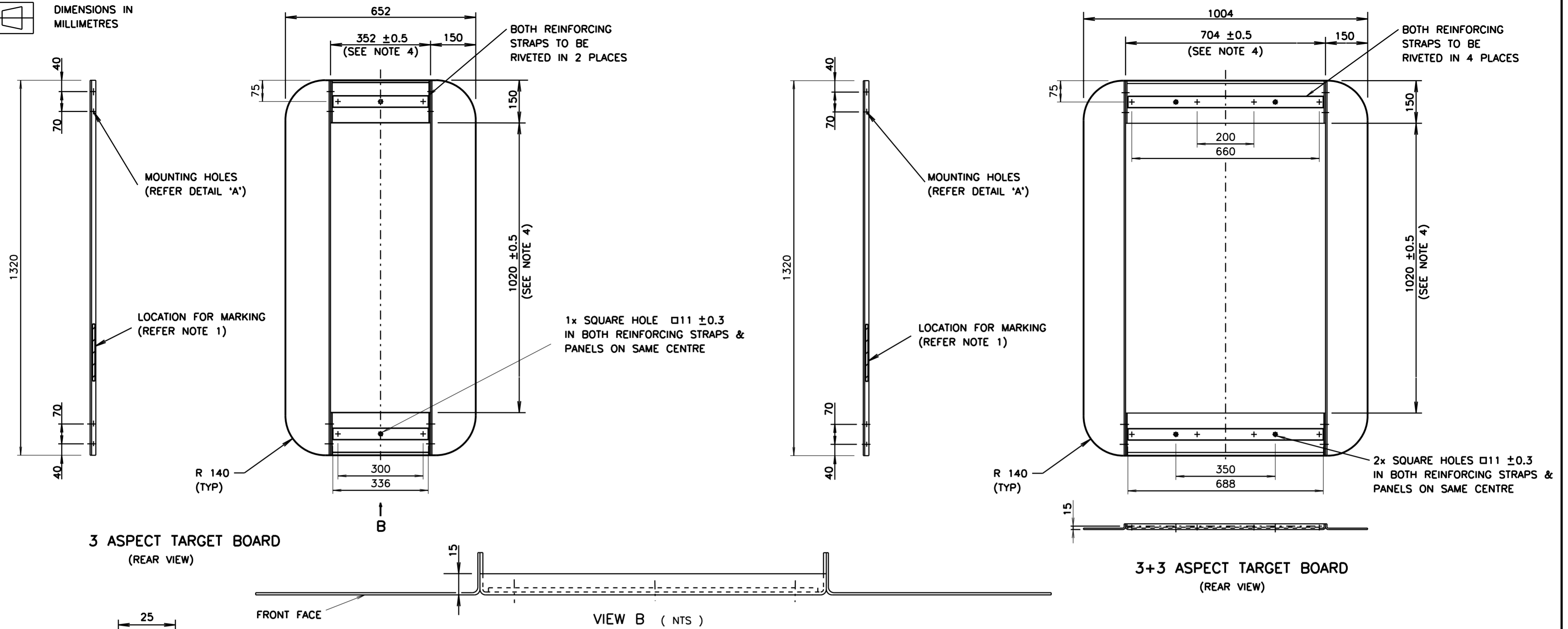
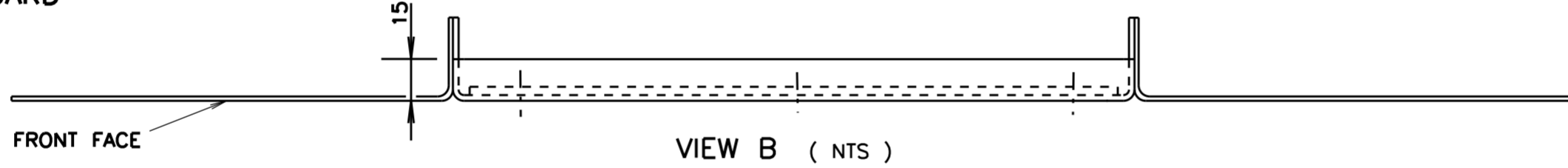


DIMENSIONS IN MILLIMETRES



3 ASPECT TARGET BOARD (REAR VIEW)

3+3 ASPECT TARGET BOARD (REAR VIEW)



NOTES:

- MANUFACTURER'S IDENTIFICATION AND DATE OF SUPPLY SHALL BE MARKED CLEARLY, INDELIBLY AND WEATHER RESISTANT.
- PACKING DETAILS:
 - RIBBED CARDBOARD OR SIMILAR PROTECTIVE PACKING TO BE APPLIED TO THE FRONT SURFACE AND EDGES OF EACH TARGET BOARD INDIVIDUALLY. THIS PACKING SHALL NOT BECOME DETACHED WHEN A BOARD IS REMOVED FROM ITS BOX OR BUNDLE.
 - BUNDLES SHALL BE SECURELY PACKAGED AND BOUND TO PROVIDE ADEQUATE PROTECTION DURING TRANSPORT AND STORAGE.
 - THE MAXIMUM NUMBER OF BOARDS PER BOX OR BUNDLE IS 6 FOR THE 3 ASPECT AND 6 FOR THE 3+3 ASPECTS.
- THE SUPPLY OF THE TARGET BOARD SHALL BE IN ACCORDANCE WITH THE RELEVANT REQUIREMENTS OF SPECIFICATION R3452.
- THE DIMENSIONS 352 x 1020 (3 ASPECT TARGET BOARDS) AND 704 x 1020 (3+3 ASPECT TARGET BOARDS) REFER TO THE RECTANGULAR APERTURE WITHIN WHICH LANTERNS MUST FIT.
- REMOVE ALL SHARP EDGES AND BURRS. ALL CORNERS TO BE R5 NOMINAL, EXCEPT WHERE OTHERWISE SHOWN.

MATERIAL & FINISH:

- MATERIAL: ALUMINIUM ALLOY SHEET 5251 H34 OR 5052 H34, 1.6 THICK FOR SIDE PANEL, 2.0 THICK FOR UPPER & LOWER SEGMENTS & 3.0 THICK FOR REINFORCING STRAPS 40 WIDE STRAPS TO BE RIVETED TO BOARD WITH 04 NON CORROSIVE RIVETS IN POSITIONS SHOWN (RIVET BODY AT THE REAR OF THE BOARD).
- FINISH: MATERIAL TO BE THOROUGHLY CLEANED, ETCHED, ALUMINIUM-CHROMATED & DRIED BEFORE THE APPLICATION OF A POLYESTER-POWDER COATING OF 50µm MINIMUM THICKNESS. THE COATING HAS TO HAVE A BLACK SEMI-GLOSS FINISH & THE FULL PROCESS OF SUCH A COATING IS SUBJECT TO APPROVAL BY THE AUTHORITY (eg. POWDER COATERS P/L PROCESS OR SIMILAR). A 20mm WHITE BORDER SHALL BE APPLIED AROUND THE OUTER FRONT FACE EDGE OF THE TARGET BOARD.
- TOLERANCE FOR HOLE CENTRES: ±0.5, OTHER DIMENSIONS ±1.0 UNLESS OTHERWISE SHOWN.
- THE TARGET BOARD SHALL BE DELIVERED COMPLETELY ASSEMBLED USING 8 ONLY STAINLESS STEEL M5x12 LONG, PAN HEAD, PHILLIPS DRIVE SCREWS, NYLOC NUTS & FOR EACH SCREW, 2 OFF Ø5.0 ID x Ø12.7 OD FLAT WASHERS.

TYPICAL MOUNTING HOLE & FOLDING DETAIL

DETAIL A

SCALE 1 : 1

I ISSUE 2000-03-07
J/1 TC2428
PLAN REDRAWN USING
3RD ANGLE PROJECTION.
EB/IH BWT

J ISSUE 2002-04-22
TARGET BOARD DESIGN
CHANGED TO USE THE
METHOD OF MOUNTING
THE LANTERN USING
MOUNTING BRACKET
DWG VM206-13
KD RVC BWT

K ISSUE 05-03-2013
DIMENSIONS REVISED
FOR STANDARDISATION.
LC. BWT.

L ISSUE 26-03-2013
TYPE 5052 H34 ADDED
TO MATERIAL DETAILS.
VIEW 'B' ADDED.
LC. BWT.

M ISSUE 29-08-2013
DIA. 15 HOLES IN TOP
& BOTTOM PANELS
CHANGED TO 11mm
SQUARE HOLES TO
MATCH REINFORCING
STRAPS.
LC. BWT.

REFERENCE DRAWINGS		DRAWN JB 23-11-81
TARGET BOARD FOR Ø200 SIGNAL LANTERN	VM206-14	CHECKED RB 23-11-81
TARGET BOARD MTC BKT SIGNAL LANTERN	VM206-13	PASSED BWT 22-12-81
RTA SUPPLY CAT No'S:		APPROVED
3 ASPECT: 70010135		D. CLARK (SGN)
3+3 ASPECT: 70010119		DATE 23-12-81

ROADS AND TRAFFIC AUTHORITY NSW
TRAFFIC SIGNALS

TARGET BOARD DETAILS
FOR Ø300
TRAFFIC SIGNAL LANTERNS

SHEET SIZE A2	FILE NO	SCALE 1 : 10 OR AS SHOWN	SHEET NO
SUPERSEDES	ISSUE I	ISSUE	
REG NO			
VM206-21			