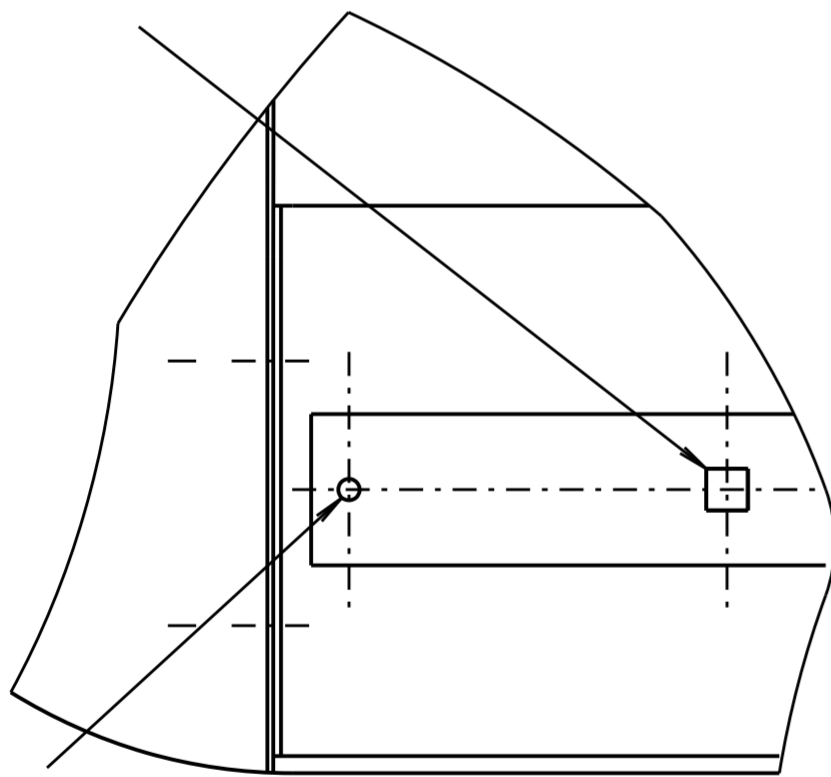


DETAIL A
SCALE 1 : 1

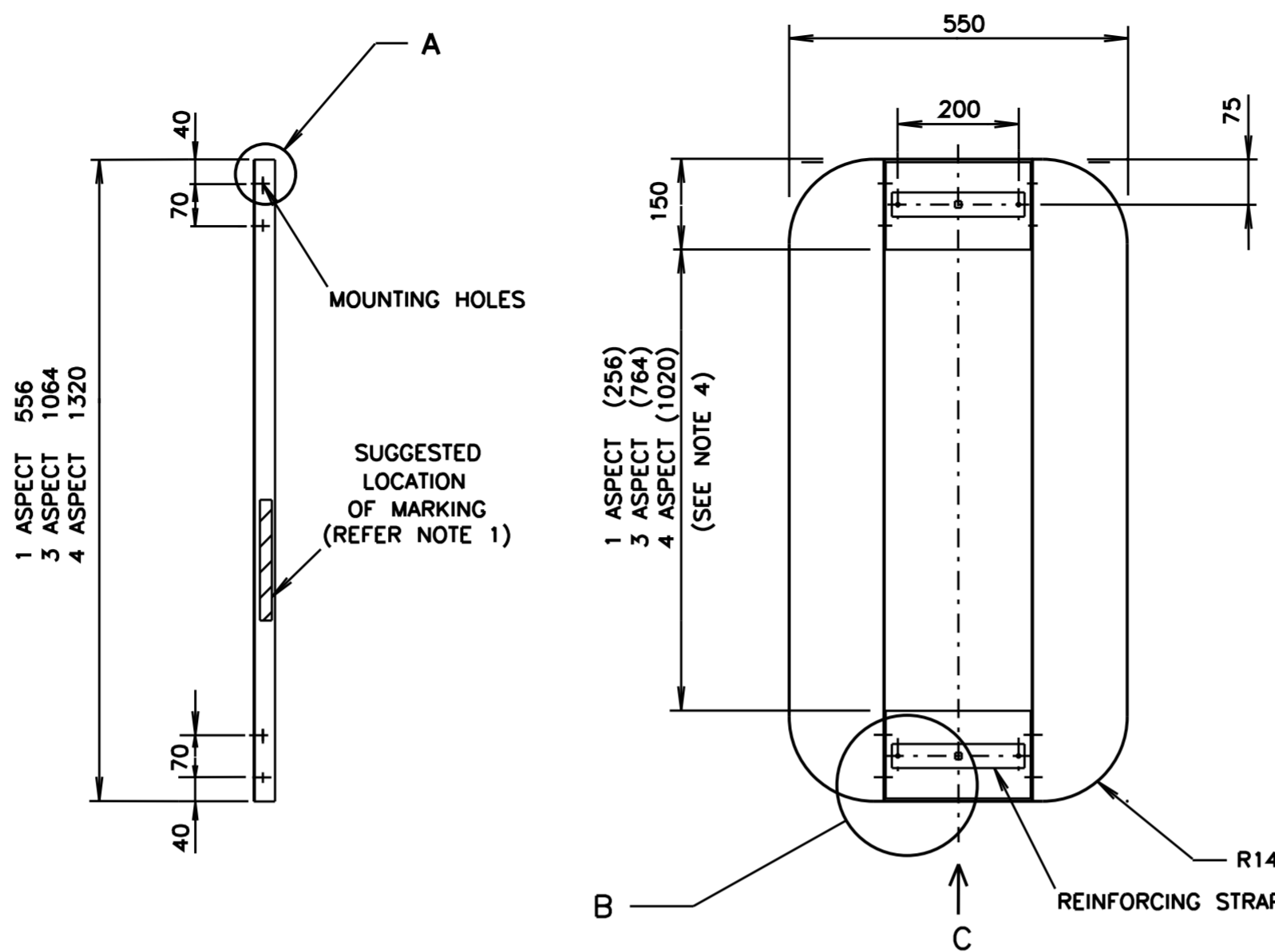
TYPICAL MOUNTING HOLE DETAIL & ORIENTATION
(INCLUDES 3+3 & 4+4 ASPECT TARGET BOARDS)

1x SQUARE HOLE
□ 11 ±0.3 IN BOTH REINFORCING STRAPS & PANEL ON SAME CENTRES

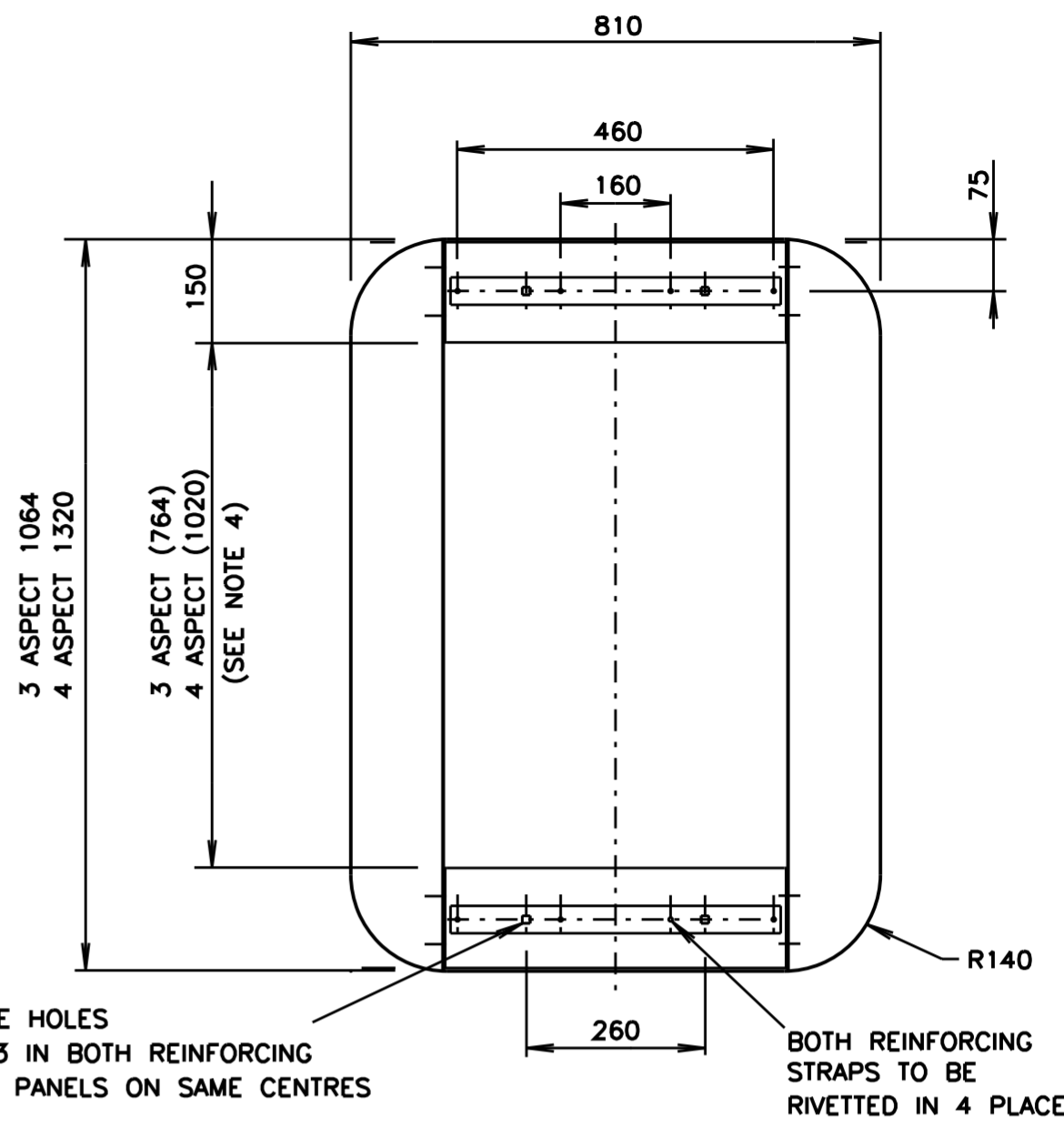


BOTH REINFORCING STRAPS TO BE RIVETTED IN 2 PLACES

DETAIL B
SCALE 1 : 2

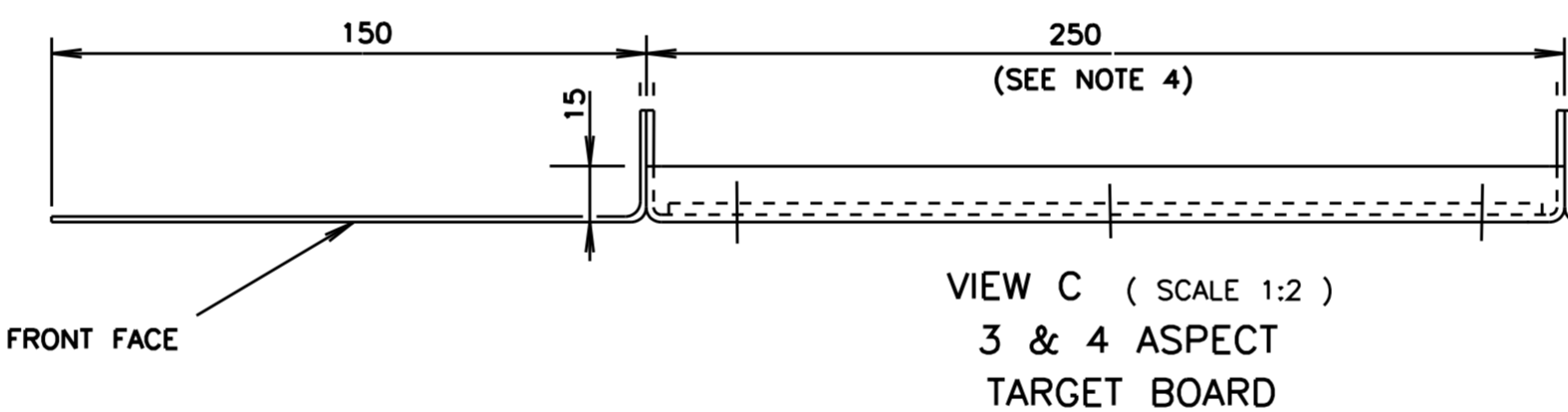
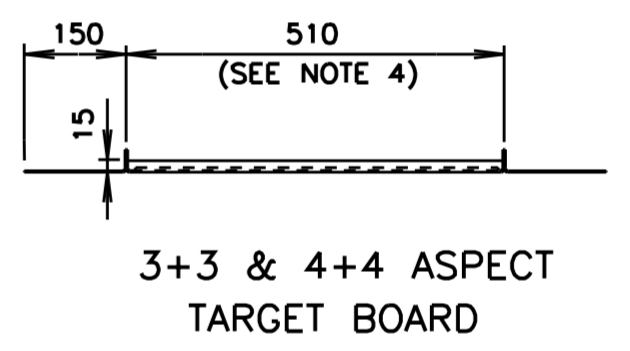


1 ASPECT (256)
3 ASPECT (764)
4 ASPECT (1020)
(SEE NOTE 4)



3 ASPECT 1064
4 ASPECT 1320

3 ASPECT (764)
4 ASPECT (1020)
(SEE NOTE 4)



VIEW C (SCALE 1:2)
3 & 4 ASPECT TARGET BOARD

MATERIAL & FINISH

- a) MATERIAL: ALUMINIUM ALLOY SHEET 5251 H34 OR 5052 H34, 1.6mm THICK FOR THE SIDE PANELS AND 2mm THICK FOR THE UPPER & LOWER SEGMENTS.
- b) REINFORCING STRAPS: 228mm LONG FOR THE 3 & 4 ASPECTS AND 484mm LONG FOR THE 3+3 & 4+4 ASPECT TARGET BOARDS. STRAPS TO BE MADE FROM 40 X 3mm AL. ALLOY 5251N34 & RIVETTED TO THE TARGET BOARD WITH NON CORROSIVE Ø4 RIVETS IN THE POSITIONS SHOWN. (RIVET BODY AT THE REAR OF TARGET BOARD)
- c) FINISH: MATERIAL TO BE THOROUGHLY CLEANED, ETCHED, ALUMINIUM-CHROMATED & DRIED BEFORE THE APPLICATION OF A POLYESTER-POWDER COATING OF 50µm MINIMUM THICKNESS. THE COATING HAS TO HAVE A BLACK SEMI-GLOSS FINISH & THE FULL PROCESS OF SUCH A COATING IS SUBJECT TO APPROVAL BY THE AUTHORITY. THE OUTER FRONT EDGE OF THE FRONT FACE OF THE TARGET BOARD SHALL BE CLEANED, ETCHED AND A 20mm WHITE BORDER APPLIED USING A SUITABLE PAINT. THE TARGET BOARD IS THEN TO BE BAKED DRY TO ACHIEVE MAXIMUM ADHERENCE.
- d) TOLERANCE OF ALL DIMENSIONS UNLESS INDICATED OTHERWISE:
 - UP TO AND INCLUDING 100mm TO BE ±0.5mm
 - OVER 100mm TO BE ±1mm
- e) THE TARGET BOARD SHALL BE DELIVERED COMPLETELY ASSEMBLED, INCLUDING M5 x 12 STAINLESS STEEL PAN HEAD, PHILLIPS DRIVE SCREWS, NYLOC NUTS & FOR EACH SCREW, 2 OFF, Ø5.0 ID x Ø12.7 OD FLAT WASHERS.

NOTES

1. MANUFACTURER'S IDENTIFICATION AND DATE OF SUPPLY SHALL BE MARKED CLEARLY, INDELIBLY AND WEATHER RESISTANT.
2. PACKING DETAILS:
 - (i) RIBBED CARDBOARD OR SIMILAR PROTECTIVE PACKING TO BE APPLIED TO THE FRONT SURFACE AND EDGES OF EACH TARGET BOARD INDIVIDUALLY. THIS PACKING SHALL NOT BECOME DETACHED WHEN A BOARD IS REMOVED FROM ITS BOX OR BUNDLE.
 - (ii) BUNDLES SHALL BE SECURELY PACKAGED AND BOUND TO PROVIDE ADEQUATE PROTECTION DURING TRANSPORT AND STORAGE.
 - (iii) THE MAXIMUM NUMBER OF BOARDS PER BOX OR BUNDLE IS 8 FOR THE 1 & 3 ASPECT AND 6 FOR THE 4, 3+3 & 4+4 ASPECTS.
3. REFER TO SPECIFICATION R3452 FOR OTHER REQUIREMENTS FOR THE TARGET BOARD.
4. THE DIMENSIONS 250 x 256, 250 x 764 OR 250 x 1020 (1, 3 & 4 ASPECT T/BOARDS) AND 510 x 764 OR 510 x 1020 (3+3 & 4+4 ASPECT T/BOARDS) REFER TO THE RECTANGULAR APERTURE WITHIN WHICH THE LANTERNS MUST FIT.
5. REMOVE ALL SHARP EDGES AND BURRS. ALL CORNERS TO BE R5 NOMINAL, EXCEPT WHERE OTHERWISE SHOWN.

DIMENSIONS IN MILLIMETRES

'P' ISSUE 01-03-96 J/I TC 2428, TC2711, PLAN REDRAWN ON CAD. REINFORCING STRAP LENGTH PUT ON PLAN. WHITE BORDER TO BE BAKED. DIMENSIONS FOR SINGLE ASPECT TARGET BOARD ADDED. TOLERANCES CLARIFIED. BWT.	'Q' ISSUE 10-03-04 REINFORCING STRAPS WERE MILD STEEL BAR & GALVANISED. B.W.T.	'R' ISSUE:-- 21-02-11 4+4 ASPECT TARGET BOARD DETAILS ADDED. BWT.	'S' ISSUE:-- 05-03-13 DIMENSIONS REVISED FOR STANDARDISATION. BWT.	'T' ISSUE:-- 26-03-13 TYPE 5052 H34 ADDED TO MATERIAL DETAILS. BWT.	'U' ISSUE:-- 29-08-13 DIA 15 HOLES IN TOP & BOTTOM PANELS CHANGED TO 11mm SQUARE HOLES TO MATCH THE REIN- FORCING STRAPS. BWT.
--	--	--	---	--	--

REFERENCE DRAWINGS		DRAWN DH 10-10-85
TARGET BRD BRKT	VM206-13	CHECKED RB 14-10-85
TARGET BRD Ø300	VM206-21	PASSED BWT 21-10-85
BLANKING DISC	VM208-39	APPROVED
RTA SUPPLY CAT NO		FR HULSCHER
1 ASPECT:	70010682	DATE 22-10-1985
3 ASPECT:	70010690	
4 ASPECT:	70010739	
3+3 ASPECT:	70010712	
4+4 ASPECT:	70010723	

ROADS AND TRAFFIC AUTHORITY NSW
TRAFFIC SIGNALS

TARGET BOARD DETAILS
FOR Ø200 MM
TRAFFIC SIGNAL LANTERN

SHEET SIZE A2	FILE NO	SCALE 1:10 OR AS SHOWN	SHEET NO
SUPERSEDES ISSUE 0		ISSUE 1	
REG NO		VM206-14	