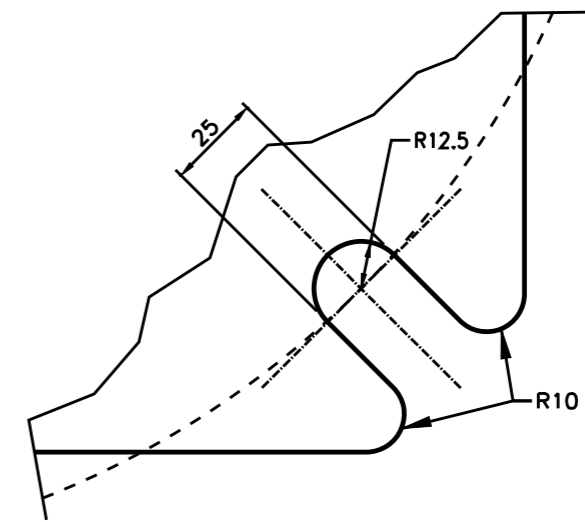
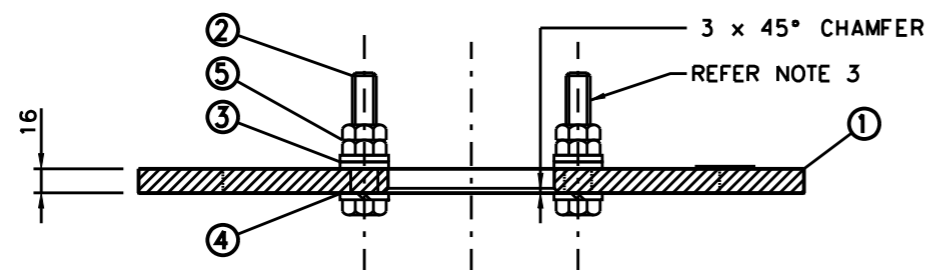


PLAN
SCALE 1:5



DETAIL A
SCALE 1:2



SECTION 1
SCALE 1:5

NOTES

1. MANUFACTURERS IDENTIFICATION AND DATE OF MANUFACTURE SHALL BE LEGIBLY AND DURABLY MARKED.
2. ALL BURRS, SHARP EDGES TO BE REMOVED BEFORE GALVANSING.
3. ITEMS 2, 3, 4 & 5 SHALL BE SUPPLIED AND FITTED (AS SHOWN) BY THE MANUFACTURER.

ITEM	DESCRIPTION	MATERIAL	FINISH	QTY
5	NUT, HEX. M20 TO AS/NZS 1112	M.S.	GALV. to AS/NZS 1214	8
4	SPRING WASHER M20	SPRING STEEL	GALV. to AS/NZS 4680	4
3	FLAT WASHER M20 (LARGE SERIES) TO AS/NZS 1237	M.S.	GALV. to AS/NZS 4680	8
2	M20x80 LONG HEX. SET SCREW TO AS/NZS 1111	M.S.	GALV. to AS/NZS 1214	4
1	ADAPTOR PLATE	M.S. 250 GRADE	GALV. to AS/NZS 4680	1

A ORIGINAL ISSUE
B ISSUE 24-06-15
ITEM 1 WAS 12mm
THICK. TYPES 7 & 8
POSTS ADDED TO
TITLE BLOCK & REF
DWGS.
IH BWT

REFERENCE DRAWINGS	
Post Type 13	VM202-20
Post Type 7	VM202-15
Post Type 8	VM202-25
SUPPLY CATALOGUE No. 18231752	

ROADS AND MARITIME SERVICES
TRAFFIC SIGNALS

ADAPTOR PLATE FOR TYPES
7, 8 & 13 POSTS ON
A TYPE 2 FOOTING

SCALE AS SHOWN	
SUPERSEDES:	
DRAWN	T.K. 04/07/03
CHECKED	IH 2003-08-15
PASSED	B. TAYLOR 2003-11-25

APPROVED: 2003-11-27	
S. SRIVASTAVA	
MANAGER EQUIPMENT & STDS	
ISSUE	A B
VM202-21	